

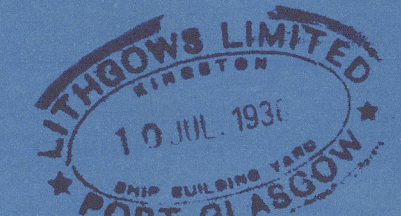
S.M.V. ARINIA. MIDSHIP SECTION.

SCALE: $\frac{1}{2}'' = 1 \text{ FT.}$

DIMENSIONS: 460'-0" B.P. ON L.W.L. x 59'-0" M.L. x 34'-0" M.L. TO UPPER D⁵
TO LLOYDS CLASS 100A.1. CARRYING PETROLEUM IN BULK.
LONGITUDINAL FRAMING AT BOTTOM AND DECK.

SCANTLINGS CLEAR OF OIL TANKS TO BE CONSIDERED SPECIALLY
SUITABLE INCREASES TO BE MADE FOR SHEER, EQUIPMENT TO RULE.

DECK LONGITUDINALS 8" x 3 1/2" x 44" B.A. N.B.S. AT 30" SPACING
DECK LONGITUDINALS 8" x 3 1/2" x 46" B.A. N.B.S. AT 33" SPACING
7/8" RIVETS SPACED 6" DIA.



LLOYDS NUMERALS
1ST LONGITUDINAL N° L x D = 460.0 x 34.0 = 15640
2ND LONGITUDINAL N° L x (B+D) = 460.0 x (59.0 + 34.0) = 42780
7/8 TO UPPER DECK = 42780

SHEER STRAKE TO BE 1 1/4" THICK AT
ENDS OF BRIDGE & AT POOP FRONT

"K" OUT
51' x 1'-03" - 50"
48" AT 30" FR. SPACING
BUTTS LAPPED 4" R. TO 3" R. AT ENDS
TO 3" R. AT ENDS WHEN EXCEEDING 68'

"J" IN
82 1/2' x 76" - 50"
48" AT 30" FR. SPACING
BUTTS LAPPED 4" R. TO 3" R. AT ENDS

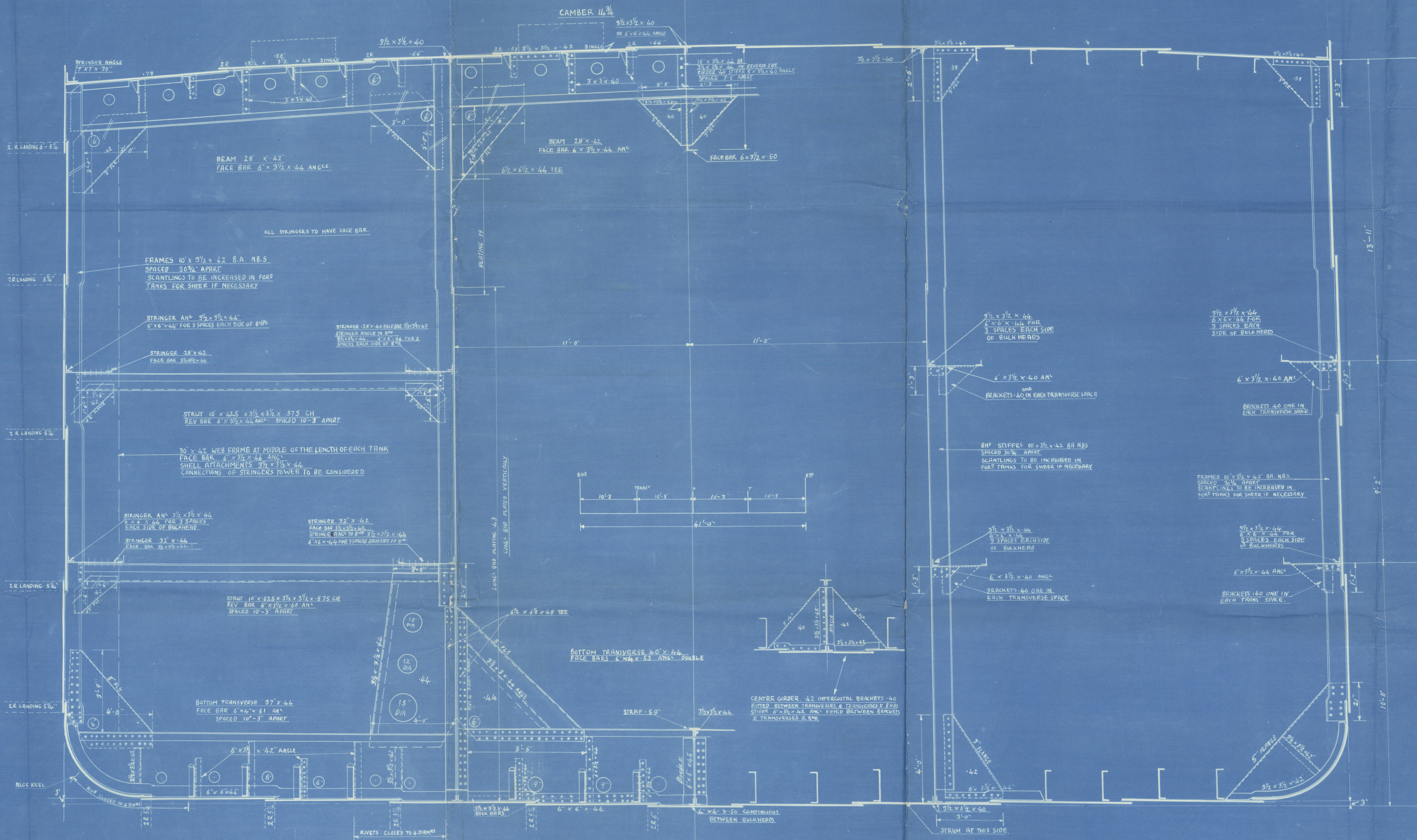
"H" OUT
90 1/2' x 65" - 50"
48" AT 30" FR. SPACING
BUTTS LAPPED 4" R. TO 3" R. AT ENDS

PORT.

"G" IN
90 1/2' x 63" - 50"
48" AT 30" FR. SPACING
BUTTS LAPPED 4" R. TO 3" R. AT ENDS

"F" OUT
75 1/4' x 63" - 50"
48" AT 30" FR. SPACING
BUTTS LAPPED 4" R. TO 3" R. AT ENDS

"E" IN
82 1/2' x 63" - 50"
48" AT 30" FR. SPACING
BUTTS LAPPED 4" R. TO 3" R. AT ENDS



STARBOARD

"D" CLINKER
76 1/4' x 64" - 50"
BUTTS LAPPED 4" R. TO 3" R. AT ENDS

"C" CLINKER
76' x 64" - 50"
BUTTS LAPPED 4" R. TO 3" R. AT ENDS

"B" CLINKER
82' x 64" - 52"
50" AT 30" FR. SPACING BUTTS LAPPED
4" R. TO 3" R. AT ENDS

"A" CLINKER
73' x 67" - 53"
50" AT 30" FR. SPACING BUTTS LAPPED
4" R. TO 3" R. AT ENDS

KEEL OUT
53' x 91" - 72"
BUTTS LAPPED 4" R. TO 4" R. AT ENDS

BOTTOM LONGITUDINALS 17" x 48" x 44" x 68" CHAN.
SPACED 30" APART

BOTTOM LONGITUDINALS 17" x 48" x 44" x 68" CHAN.
SPACED 33" APART

RIVETS IN BOTTOM LONGITUDINALS TO SHELL 3/4" DIA. APART FOR 11 RIVETS EACH SIDE OF
TRANSVERSES x BULKHEADS 6 DIA. ELSEWHERE 1 1/2" DIA. IN FOR TANK.

Midship Section (as built)
Messrs. Lithgow's Limited's
Nº 880. —
M.V. "ARINIA"

GRK 1ST ENTRY REPORT Nº 20189.

W335-0079



© 2020

Lloyd's Register
Foundation