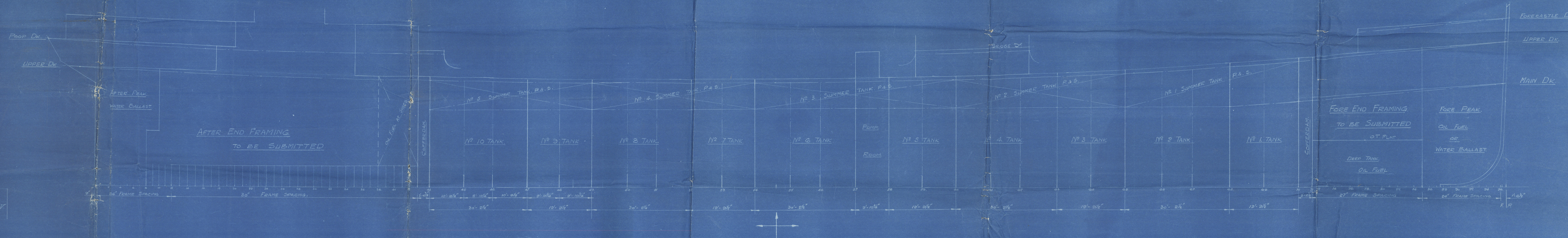
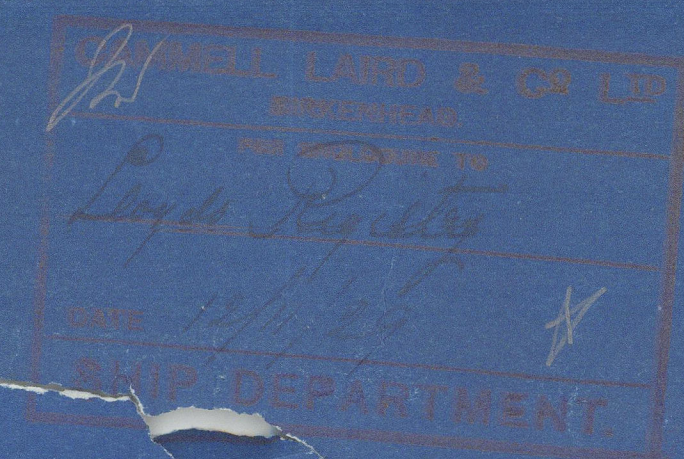


Nº 972-3

# LONGITUDINAL SECTION

SCALE: 1/8" = 1 FOOT



2A

6.4.17



2/

Cammell Laird & Co

Nos 972/3

Longitudinal Section



S. S. *Athelbeach*

LIVERPOOL

Report No. *98396*

S. S. *Athelforn*

LIVERPOOL

Report No. *98861*



© 2020

Lloyd's Register  
Foundation