

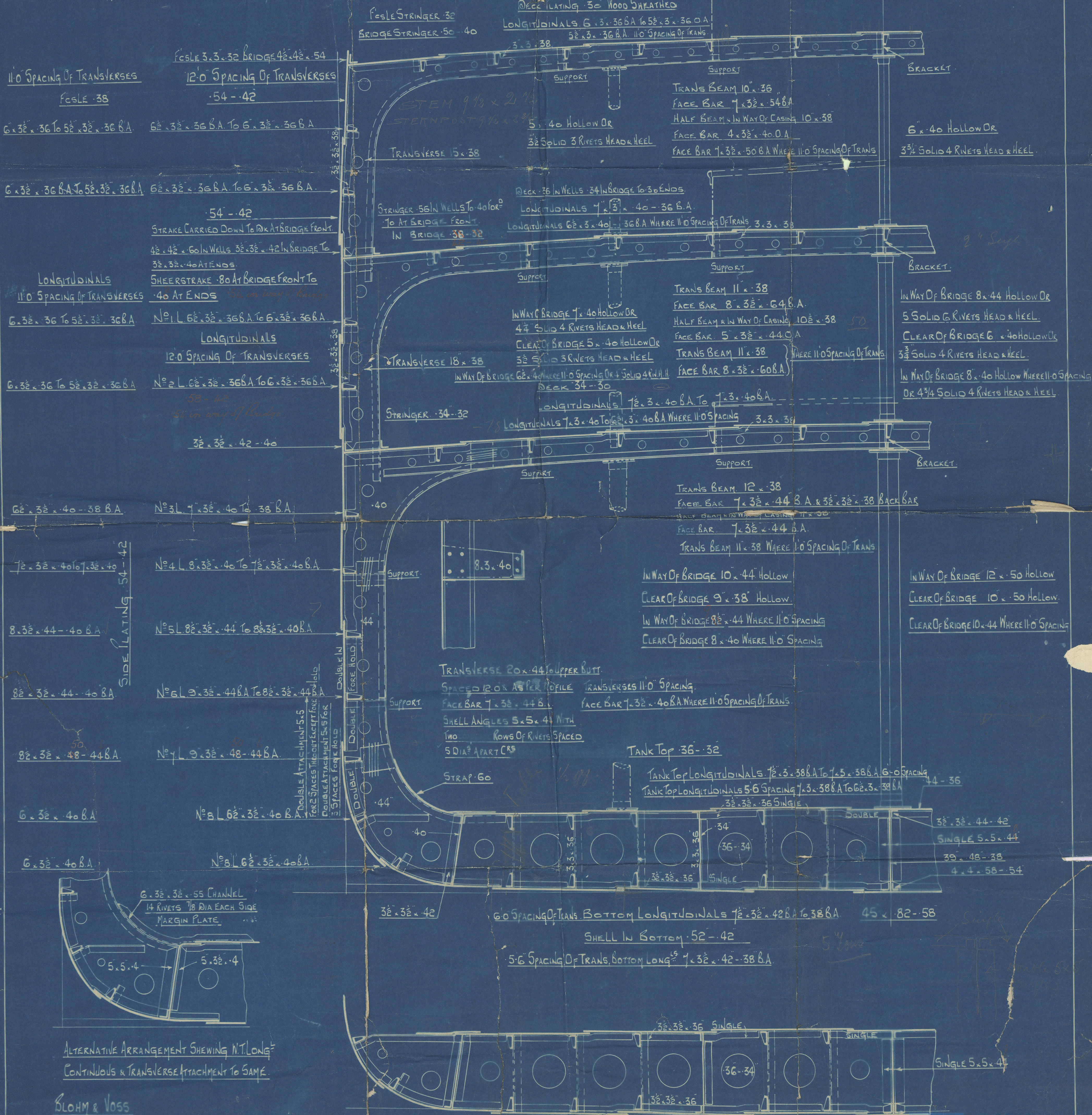
MIDSHIP SECTION.

SHERWOOD SYSTEM (PATENT)

Breadth MLD 44.5
 Depth MLD 25.5
 10.0 TRANSVERSE No
 Length B.P. 331.4
 23205 LONGITUDINAL No
 Upper Dk 12.99 Bridge Dk 9.97

331'6" x 44'6" x 25'6"

2 SCALE



ALTERNATIVE ARRANGEMENT SHOWING N.T. LONG CONTINUOUS & TRANSVERSE ATTACHMENT TO SAME.

BLOHM & VOSS
HAMBURG. No 207.

INTERMEDIATE TRANSVERSE.



Lloyd's Register Foundation

W332-0169

T.S. "Assyrian" to "Lutz"

midship section

Lutz

Midship Section



© 2019

Lloyd's Register
Foundation
W332 0169