

LITHGOWS LTD
Nº 948. "EMPIRE STREAM"
MIDSHIP SECTION
AS FITTED

"EMPIRE STREAM"

GREENOCK 1ST ENTRY REPORT Nº 21292.

W33-0238



© 2019

Lloyd's Register
Foundation

COLLIERS. E. 4350 DWT.

MIDSHIP SECTION.

S.S. EMPIRE STREAM. (YARD NO 948)

SCALE 1/2" = 1'-0"

CLASS LLOYDS * 100 A.I. FULL SCANTLING

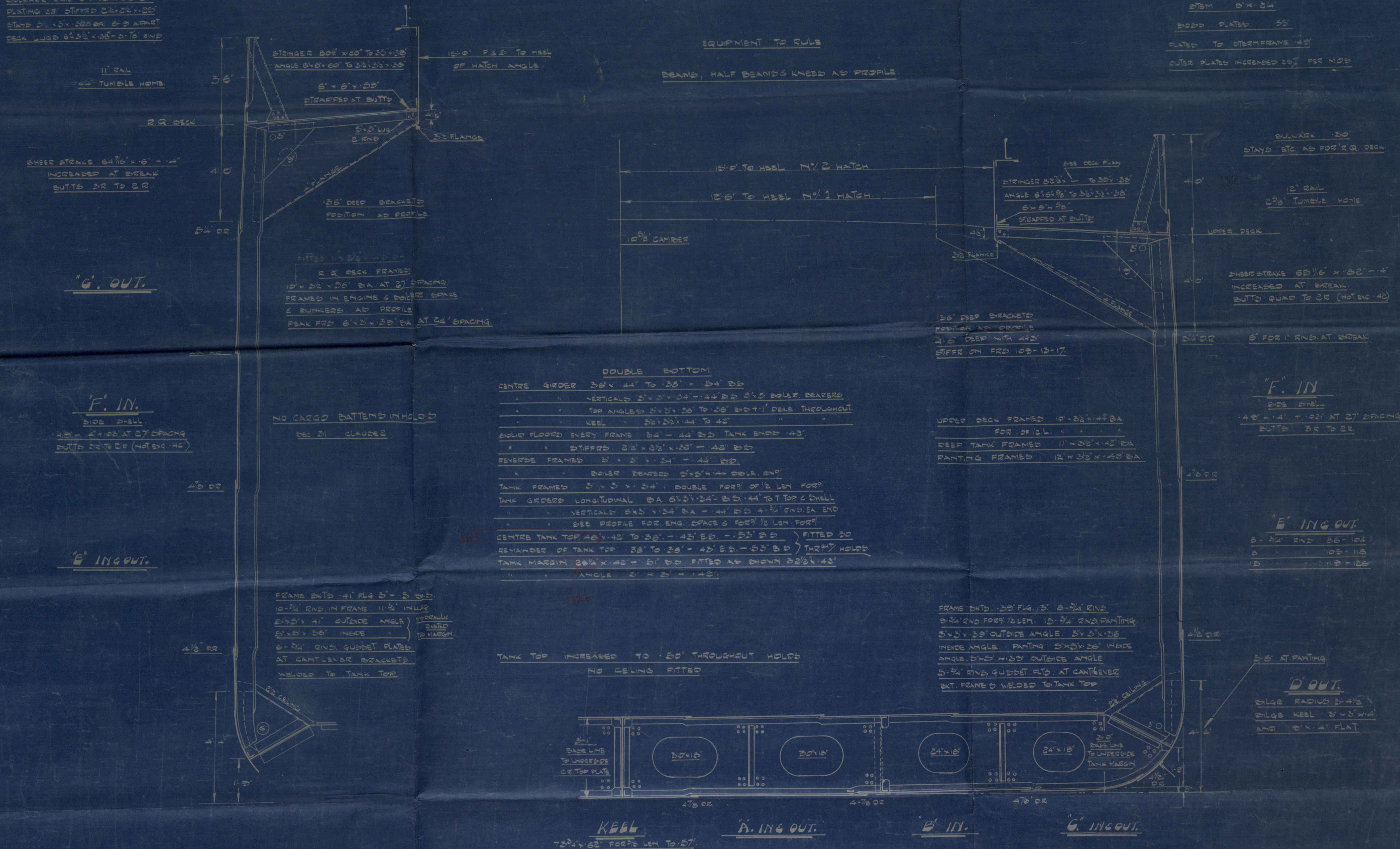
DIMENSIONS.

LENGTH L.W.L. 312'-0"
BREADTH M² 44'-3"
DEPTH " 22'-1" U.D.K.
5'-0" R.Q.DK.

NUMERALS.

FIRST NUMBER = 6885.35
SECOND = 20884.38
Q = 19.04 U.D.K. + 1.87 FOR 1/2 LEN.
24.00 PARTING. Q.DK 24.04
1/2 U.D.K. = 14.13. 1/2 DK 11.03
1/2 COVERED = 701

BULKHEAD BAIL 5' x 32' BA
PLATING 28' STIFFED 28' x 28'
STAYS 28' x 28' ON 6" SPACING
DECK LUGS 6" x 6" x 5' TO RIND



BOTTOM SHELL TO UPPER TURN OF BILGE 48' - 4' + 03' AT 27' SPACING "A & B" STRAKES INCREASED TO 57' FOR 1/2 L TO RULE POSITION OF COLLISION BULKHEAD