

# T. S. S. "AVILA STAR."

## PROPOSED ARRANGEMENT FOR FITTING PORTABLE CANVAS SWIMMING BATH IN N° 5 CARGO HATCHWAY.

SCALE 1/4" = 1 FOOT.

LAN 103746

### OUTLINE SPECIFICATION.

**HATCH TRUNK:** INSULATION, AIR TRUNKS, DELIVERY AIR PIPES TO MATCH SQUARE, BRINE GRIDS, MEAT RAILS ETC., OVERHEAD AND ON FORWARD & AFTER BULKHEADS IN BRIDGE TWEEN DECK, AND ALSO ON UNDERSIDE OF BRIDGE DECK TO BE STRIPPED AS REQUIRED. A W.T. STEEL COAMING PLATE TO BE WELDED TO DECK ALL ROUND TRUNK BOUNDARY, AND A CONTINUOUS LINTEL PLATE TO BE FITTED UNDERDECK AT TRUNK SIDES. AN INSULATED TANK BULKHEAD OF 8" SLAB COCK COMPLETE WITH GROUND, LININGS, RUNNERS AND CANTS ETC. TO BE ERECTED. CARGO DOORS TO BE ARRANGED PORT & STARBOARD TO GIVE MAXIMUM CLEAR OPENING AND ALLOW DOORS TO SWING BACK TO BULKHEADS. OTHER INSULATED FITTINGS SUCH AS THERMOMETER TUBES, JET CASING WITHIN EXTENT OF NEW HATCH TRUNK ALSO TO HAVE WELDED STEEL COAMINGS FITTED AND BE ADDITIONALLY INSULATED AS NECESSARY. DISBURSED INSULATION, GIGGS, RAULS ETC. IN CARGO SPACES TO BE REPLACED AND AIR TRUNKS BLANKED OFF AS NECESSARY AND NEW HOLES CUT. TO BE REBUILT WITH AN 11" DEEP 8 A COAMING COMPLETE WITH 4" THICK BLACK COVERS, REST BARS, CLEATS, BATTENING DOWN BARS AND DOUBLE PROOFED TARMULIN ETC. THE HATCH WEB BEAM TO BE OF INCREASED DEPTH TO SUIT, BUT EXISTING PINE COAMINGS, FLOE & AFTER, AND INSULATED PLUGS TO BE REFITTED AS INADAPTABLE. TO BE REPLACED BY SIMILAR ARRANGEMENT TO MAIN HATCH.

**N° 5 HATCH:** NECESSARY INSULATION, GIGGS, RAULS ETC. TO BE DISMANTLED AND RE-ERECTED FOR THE FITTING OF A 5" DIA" DRAINAGE SCUPPER ARRANGED AT EACH CORNER OF HATCH TRUNK. AT THE FORWARD END THE PORT SIDE SCUPPER TO BE LED OVERDECK TO SHIP'S SIDE, DOWN AND OVERSIDE, WHILE THE STARBOARD SIDE SCUPPER TO BE LED DOWN INTO ENGINEERS' ATHWARTSHIP ALLEYWAY AND THENCE OVERBOARD. THESE SCUPPERS TO BE FITTED WITH EFFICIENT STOM VALVES AND WHERE NECESSARY TO BE LED INTO THE SPACES BELOW TO BE EXTRA WELL INSULATED. AT THE AFTER END THE SCUPPERS TO BE TAKEN OVERDECK THRO' AFTER WELL BULKHEAD AND CONTINUED INTO WEATHER DECK GUTTERWAYS. THE OVERDECK PLATE TO BE SHAPED AS REQUIRED AND SUITABLY CAGED, AND ALSO BURRED WHERE PASSING THRO' THE AFTER SCTION AIR DUCT. TO BE LAID ON DECK WITHIN HATCH TRUNK AREA, ABOUT 3" THICK AT AFTER END, AND REDUCING TO 1" THICK AT FORWARD END. A SLIGHT DRAINAGE DOWNFALL TO BE ARRANGED AT THE SCUPPER POSITIONS.

**DECK ASPHALTE:** EXISTING MATCH PLUGS, WEBS AND FALSE DECK MATCH COVERS TO REMAIN FOR USE WHEN PORTABLE BATH NOT ERECTED IN HATCHWAY.

**N° 5 HATCH (LOWER FROM DECK):** 3" THICK TIMBER SHUTTERS FORMING BATH SURROUNDS TO BE ARRANGED VERTICALLY AND TO SHIP INTO SUITABLE G.I. CHANNELS FITTED TO THE STEELWORK ON THE UNDERSIDE OF HATCH COAMINGS AND PINE JOISTS, AND INTO PORTABLE G.I. FOUNDATION ANGLE BARS ARRANGED ON THE BRIDGE DECK HATCH AFTER SAME HAS BEEN SECURELY BATTENED DOWN AND COVERED WITH SPECIAL RUBBER MAT.

**SWIMMING BATH:** THE SIDE FOUNDATION BARS TO BE ANCHORED IN POSITION BY HINGING BOLTS AT EACH END, AND THE END BARS BOLTED TO LUGS WELDED ON THE SIDE BARS. ALL FOUNDATION BARS TO BE SUPPORTED AGAINST THE OUTWARD PRESSURE BY AN ARRANGEMENT OF HINGING W.I. STANCHIONS ENGAGING INTO ANGLE LUGS WELDED TO THE FOUNDATION BARS. APPROXIMATELY 15'0" x 11'0" x 7'0" DEEP OF DOUBLE CANVAS TO APPROVAL TO BE SUPPLIED COMPLETE WITH BINDING ROPES, AND CLOSE SPACED CINGLES FASTENED INTO SPECIAL G.I. CLIP HOOKS FOR ENGAGING THE HATCH WATERWAY CHANNEL AND PINE COAMING.

**HATCH WATERWAY:** ANGLE LUG CLEATS TO BE WELDED IN HATCH WATERWAY CHANNEL FOR THE DUAL PURPOSE OF WEDGING THE SWIMMING BATH CUP HOOKS, AND BATTENING DOWN TARMULIN OVER INSULATED PLUGS WHEN BATH NOT IN USE.

**RAILS & STANCHIONS:** EXISTING PORTABLE STANCHIONS TO BE RETAINED FOR CARGO WORKING AND IN ADDITION PORTABLE STANCHIONS 3'6" IN HEIGHT WITH CLOSE SPACED RAILS IN GATES TO BE FITTED AROUND BATH POSITION.

**BATH LADDER:** A PORTABLE TEAK LADDER WITH SIDE HAND GRIPS AND HINGING STANCHION TO BE SUPPLIED FOR FITTING AT FORWARD END OF BATH, OR EXISTING LADDER ALTERED TO SUIT. TO BE SUPPLIED AND FITTED AROUND HATCHWAY WHEN BATH IN POSITION, AND PORTABLE MAKE-UP TEAK GRATINGS TO BE FITTED IN WAY OF WATERWAY CHANNELS TO GIVE LEVEL SURFACE.

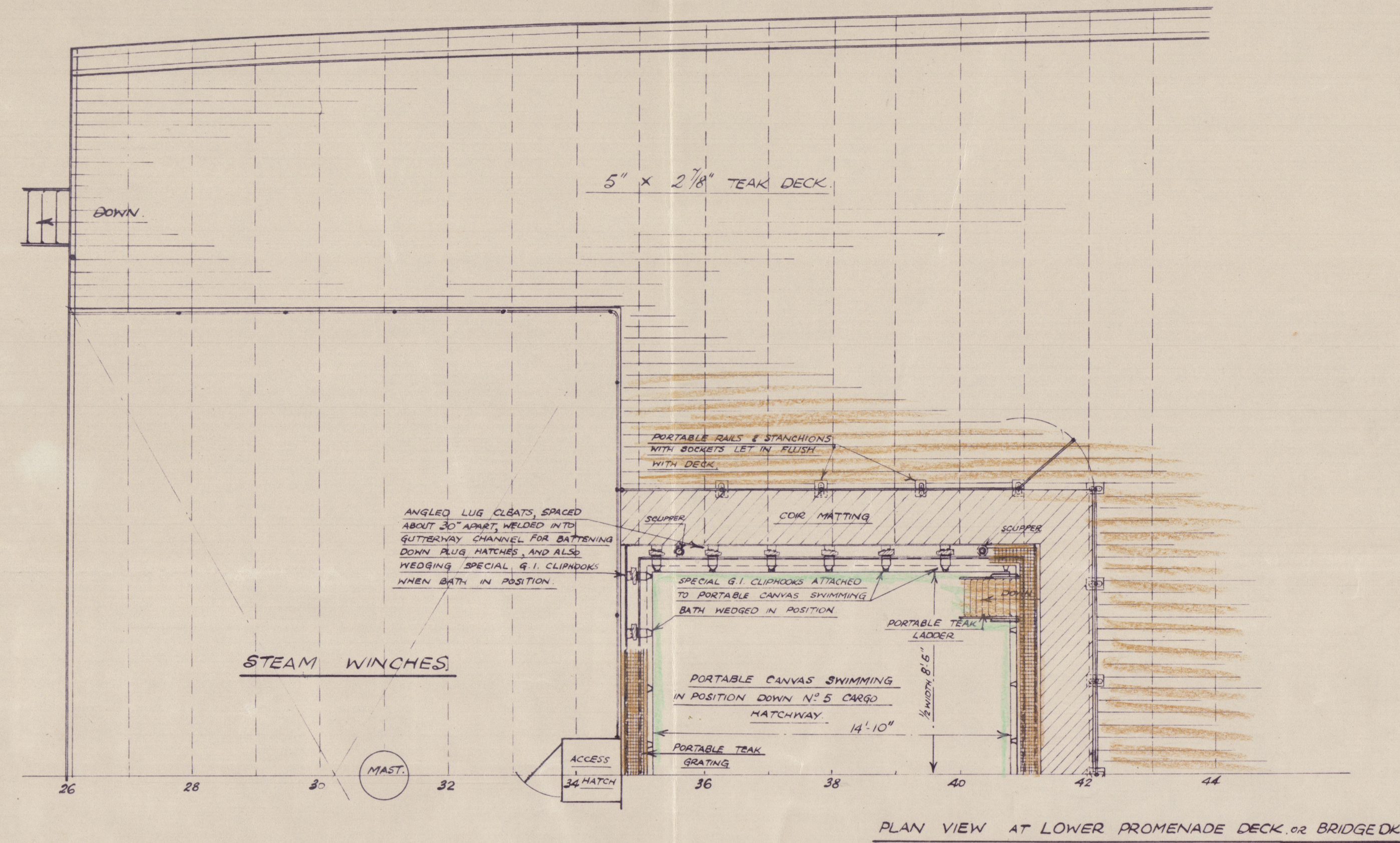
**PORTABLE GRATING:** APPROXIMATELY 20'0" x 16'0" (IN DUPLICATE) OF APPROVED MAKE AND COMPOSITION TO BE SUPPLIED FOR LAYING OVER N° 5 BRIDGE DECK HATCH WHEN BATH IN USE. HATCHMATS, COIR MATTING ETC. WHEN NOT IN USE TO BE STORED IN WOOD SPARRED CASING AT FORWARD END OF HATCH TRUNK. SPACE AT AFTER END OF HATCH TRUNK TO BE UTILISED FOR STORAGE OF PORTABLE TIMBER SHUTTERS, MATCH PLUGS AND COVERS ETC.

**BATH FILLING:** EXISTING FIRE AND WASH DECK SERVICE MAINS (P.S.) TO BE TAPPED AND HOSE LED INTO AFTER END OF BATH. A FIXED VARIABLE ELECTRICALLY DRIVEN PUMP OF CAPACITY NOT LESS THAN 60 TONS/HOUR TO BE SUPPLIED COMPLETE WITH SUITABLE TAIL PIECE & ROSE, OVERSIDE DISCHARGE HOSE, SEATINGS, AND ELECTRICAL CONNECTIONS ETC.

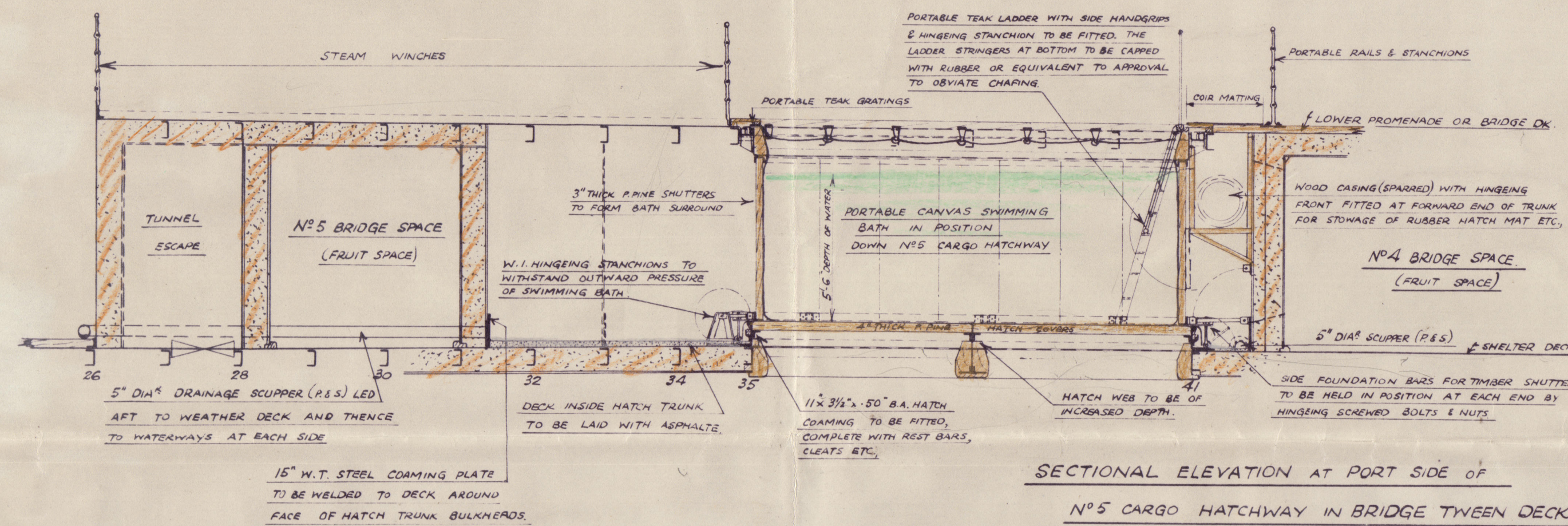
**FINALLY:** ALL TO BE CONSTRUCTED TO CHIEFS APPROVAL AS GENERALLY SHOWN ON PLAN, AND TO COMPLY WITH THE B.O.T. LLOYDS AND FACTORY ACT REQUIREMENTS. THE WHOLE INSTALLATION TO BE DIRECTED, TRIED OUT SATISFACTORILY, AND DISMANTLED.

ELECTRICAL WIRING, FITTINGS, LUXURION FIDE EXTINGUISHING LEADS ETC. TO BE MODIFIED WHERE NECESSARY, AND PAINTWORK MADE GOOD. WEIGHT OF WATER IN BATH TO 5'6" DEPTH ABOUT 40 TONS.

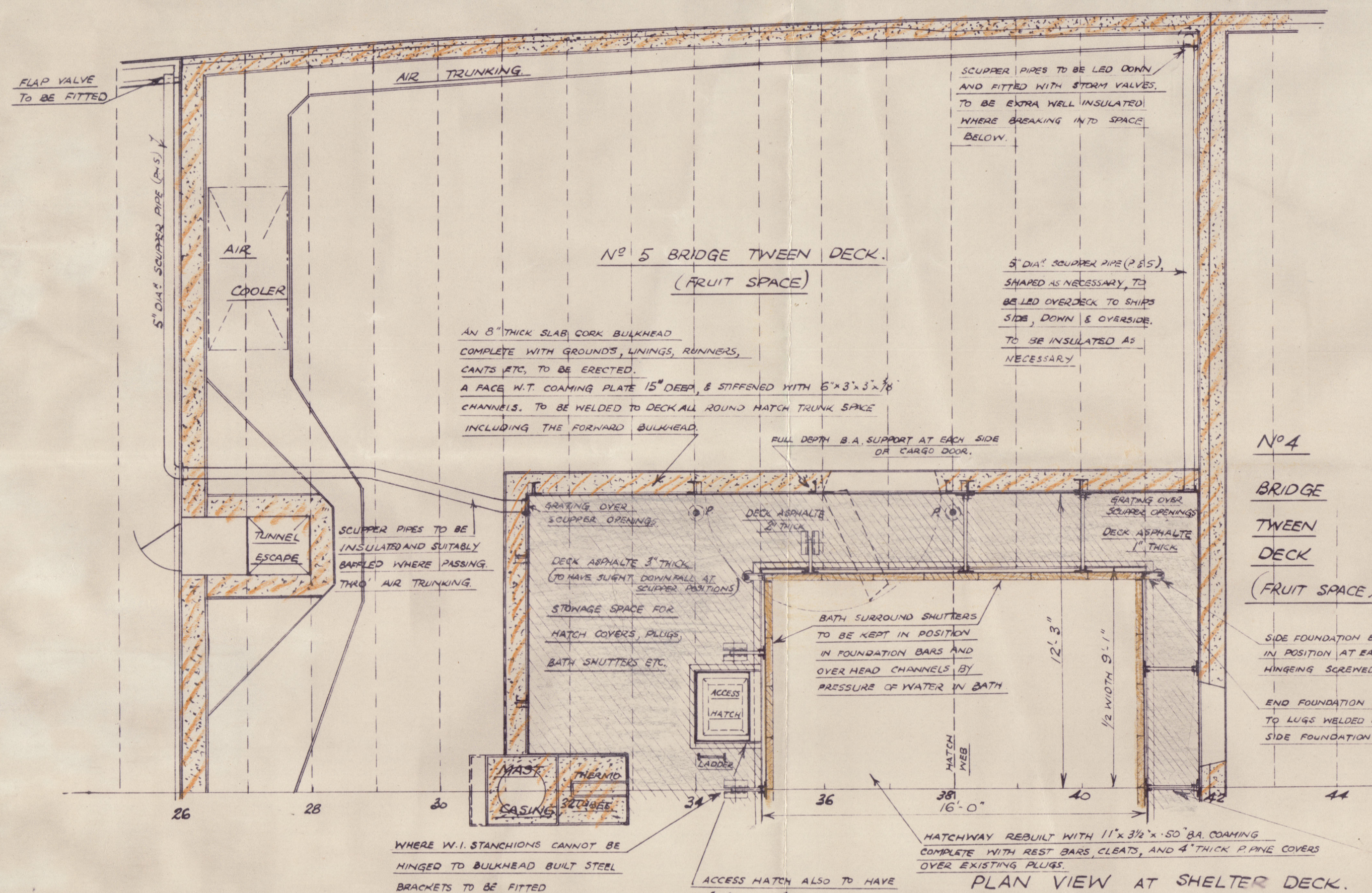
NOTE:- ARRANGEMENT OF HATCH END COAMINGS SIMILAR TO SIDES.



PLAN VIEW AT LOWER PROMENADE DECK OR BRIDGE DECK.



SECTIONAL ELEVATION AT PORT SIDE OF N° 5 CARGO HATCHWAY IN BRIDGE TWEEN DECK.



PLAN VIEW AT SHELTER DECK.

### N° 5 BRIDGE TWEEN DECK (PORT) (FRUIT SPACE)

CARGO DOOR TO BE ARRANGED PORT & STARBOARD WITH MAXIMUM CLEAR OPENING AND ALLOWING DOORS TO HINGE BACK TO BULKHEADS.

### N° 5 BRIDGE TWEEN DECK (PORT) (FRUIT SPACE)

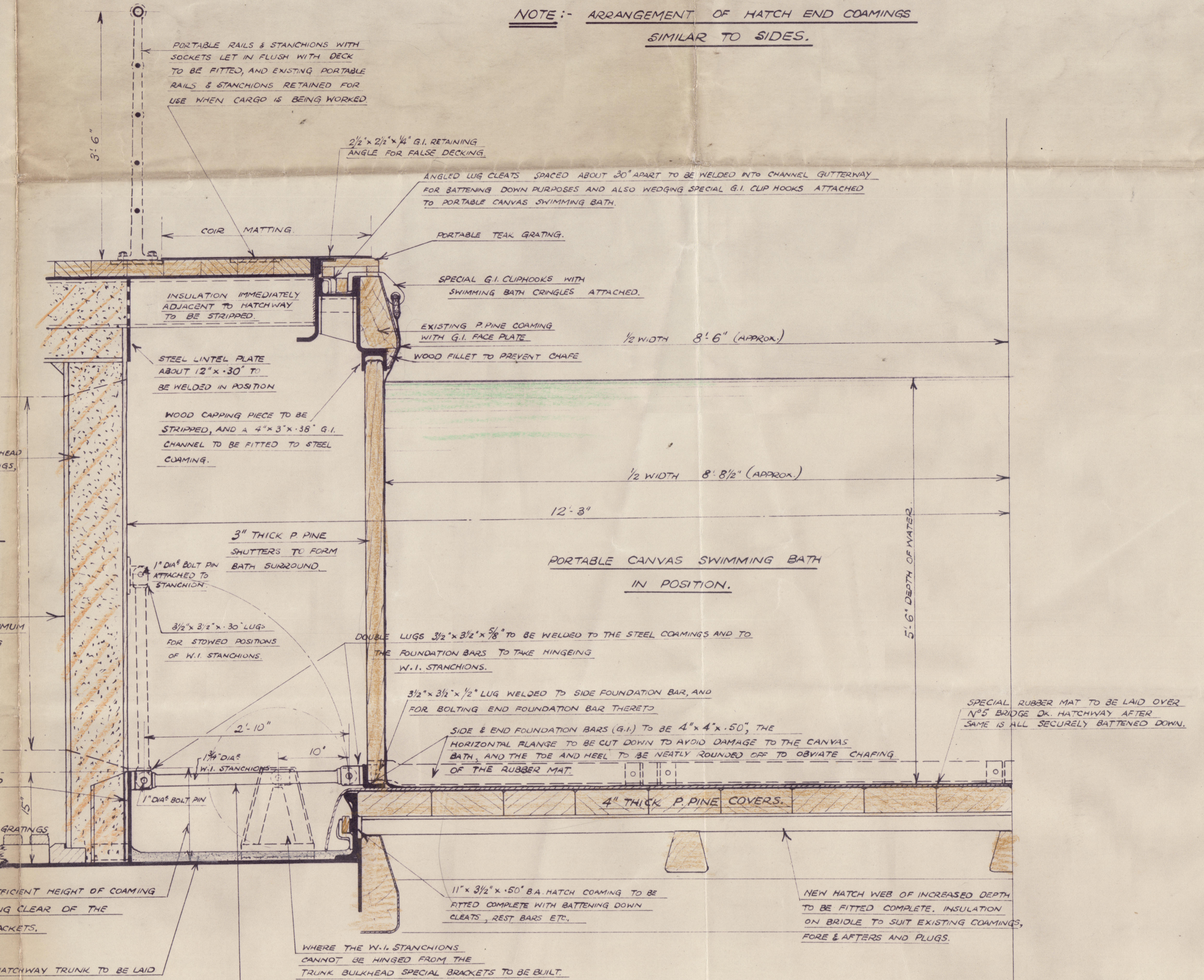
CARGO DOORS TO HAVE SUFFICIENT HEIGHT OF COAMING TO ALLOW DOORS TO SWING CLEAR OF THE HINGING STANCHION BRACKETS.

### N° 5 BRIDGE TWEEN DECK (PORT) (FRUIT SPACE)

DECK WITHIN HATCHWAY TRUNK TO BE LAID WITH ASPHALTE OF THICKNESSES AS PER PLAN VIEW.

### N° 5 BRIDGE TWEEN DECK (PORT) (FRUIT SPACE)

W.I. STANCHIONS ARRANGED TO HINGE DOWN FROM BULKHEAD AND ENGAGE FOUNDATION BAR LUGS TO FORM SUPPORT AGAINST OUTWARD PRESSURE OF SWIMMING BATH WHEN IN POSITION.



TRANSVERSE SECTION THRO' HATCHWAY WITH CANVAS SWIMMING BATH IN POSITION. (LOOKING FORWARD) SCALE 1" = 1 FOOT.

BLUE STAR LINE LTD.  
SUPERINTENDENTS DEPARTMENT,  
17-18, WEST SMITHFIELD,  
LONDON, E.C.1.



W329-0/29



© 2020

Lloyd's Register  
Foundation