

WALLSEND-ON-TYNE.

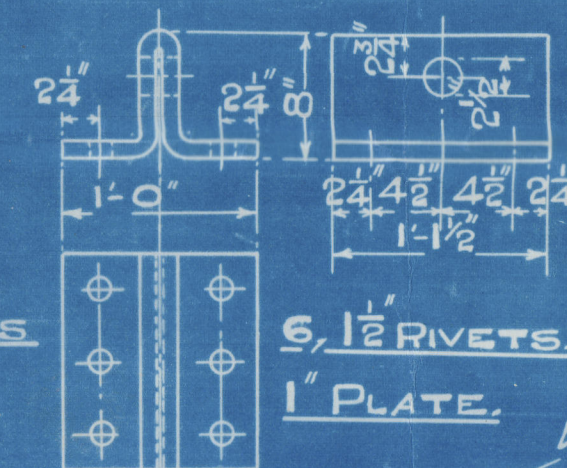
BOILER.

SCALE - 1 INCH = 1 FOOT.

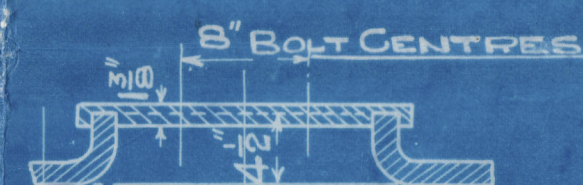
POSITION OF MANHOLES IN BOILER BACKS.

PLATE STRENGTH = 85.45%

RIVET STRENGTH = 92%

$$\frac{\text{SHELL W.P.} \quad (44-2) \times 28 \times 85.45}{2.75 \times 165.25} = 221.7$$


BOILER LIFTERS
4, THUS EACH
BOILER.



TO LLOYDS REQUIREMENTS.

HEATING SURFACE OF TUBES = 1690 SQ. FT.

11 " ELSEWHERE = 410 11 11

11 11 | TOTAL = 2100 11 11

WORKING PRESSURE 220 LBS. PER SQ. INCH.

TEST PRESSURE 380 " " " "

ALL PLATES, STAYS & RIVETS, STEEL, SMOKE TUBES, WROUGHT IRON.

TENSILE STRENGTH OF SHELL PLATING BETWEEN 28 & 32 TONS/IN.

ALL HOLES DRILLED IN PLACE AFTER PLATES ARE BENT.

STAYS MARKED THUS \bigcirc 24 DIA: 9, THREADS.

ALL OTHERS 2 DIA: 9, THREADS

ALL SCREWED STAYS FITTED WITH NUTS.

2" NUTS 1" DEEP.

3, OFF

TRACING N° 689

CONTRACT ~~100~~-2626

2627 Foundation

W329-0050

C2626 - C2627

NORTH EASTERN MARINE ENG. CO. LD.

MAIN BOILERS.

Please return for C2627

S. S. ANGLO PERUVIAN
NEWCASTLE ON TYNE.

Report No. 80550

~~"Anglo Australian"~~

"Anglo Australian"
NEWCASTLE ON TYNE.

Report No. 81329

W329-0059



© 2020

Lloyd's Register
Foundation