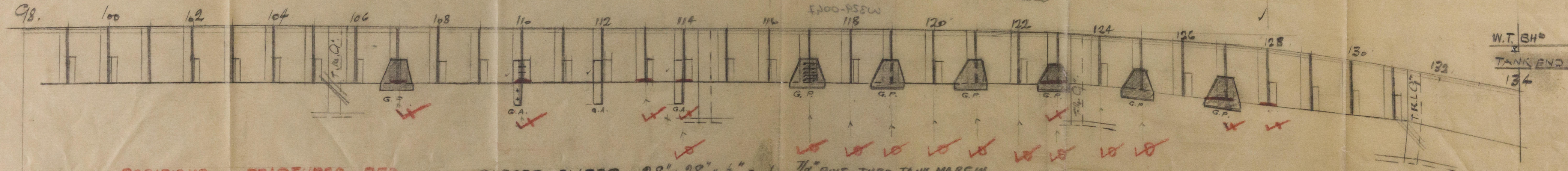


5/8 ANGLO - PERUVIAN.

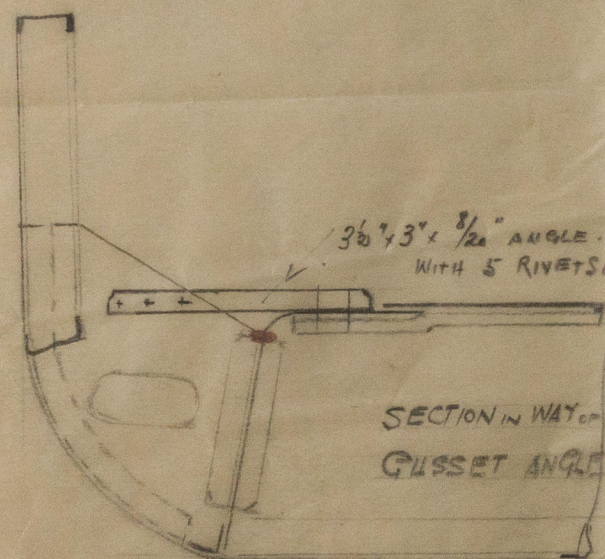
ADDITIONAL GUSSET PLATES & ANGLES IN WAY OF N:2 TANK. P&S.

NON W.T. SH^d
98.



POSITIONS OF FRACTURES IN RED

STAR^d SIDE MARKED LO
PORT SIDE X



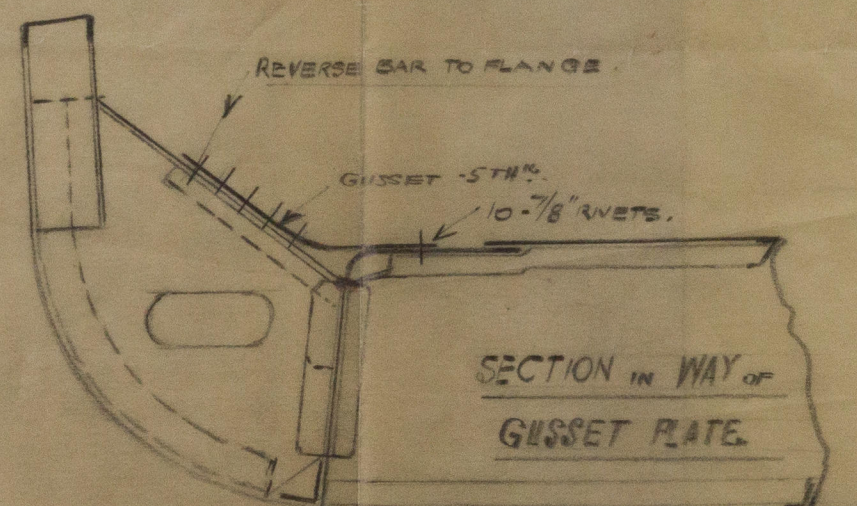
GUSSET PLATES 38" x 28" x 1/2" - 10-7/8" RIVS. THRO TANK MARGIN.

REVERSE BARS TO MARGIN BKT^s 3 1/2 x 3 1/2 x 40 - 5-7/8" RIVS.

GUSSET ANGLES 3 1/2" x 3" x 40 - 2 RIVS. THRO BKT - 2 RIVS THRO TANK TO P₂ REVERSE FRAME.

PLAN VIEW - PORT SIDE.

POSITIONS OF GUSSET PLATES & ANGLES SIMILAR ON STAR^d SIDE.

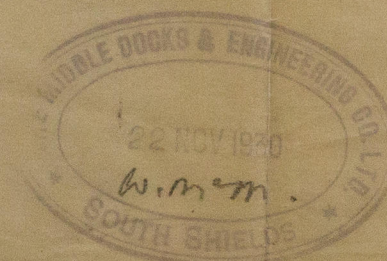


NEWCASTLE ON TYNE.
S.S. ANGLO PERUVIAN.

Report No. 86670.

EXTENT OF N:2 HATCH OYER.

Additional gusset plates
& angles in way of N:2
Tank T + 2

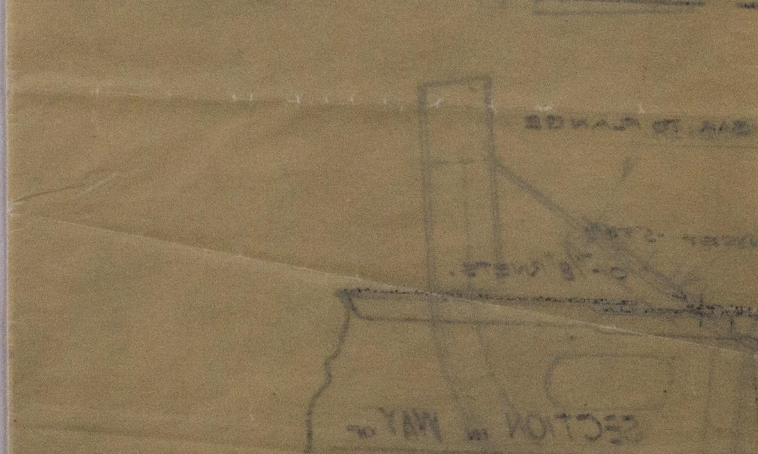
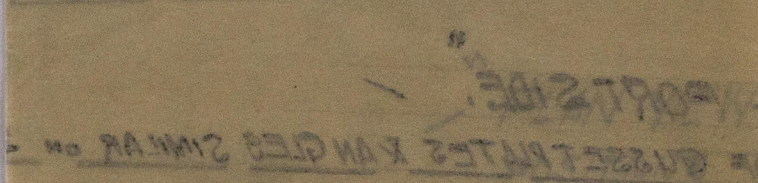
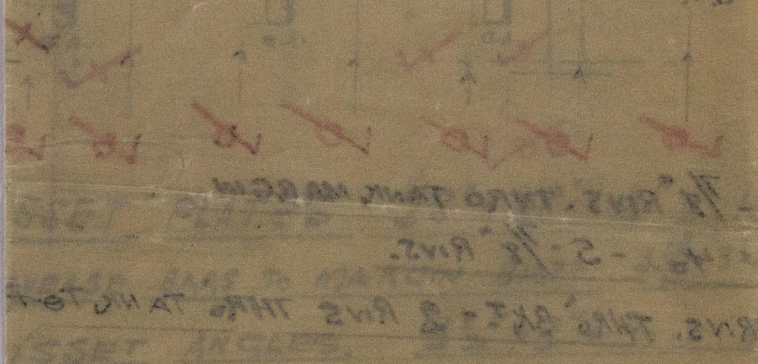


S. S. "ANGLO PERUVIAN"
NEWCASTLE ON TYNE.

Report No. 86670.

Additional Gusset plates
+ angles in way of N: 2
Tank. P + S

W329-0047



© 2020

Lloyd's Register
Foundation