

T.S.S.'s "STUART STAR" AND "AFRIC STAR."

MIDSHIP SECTION.

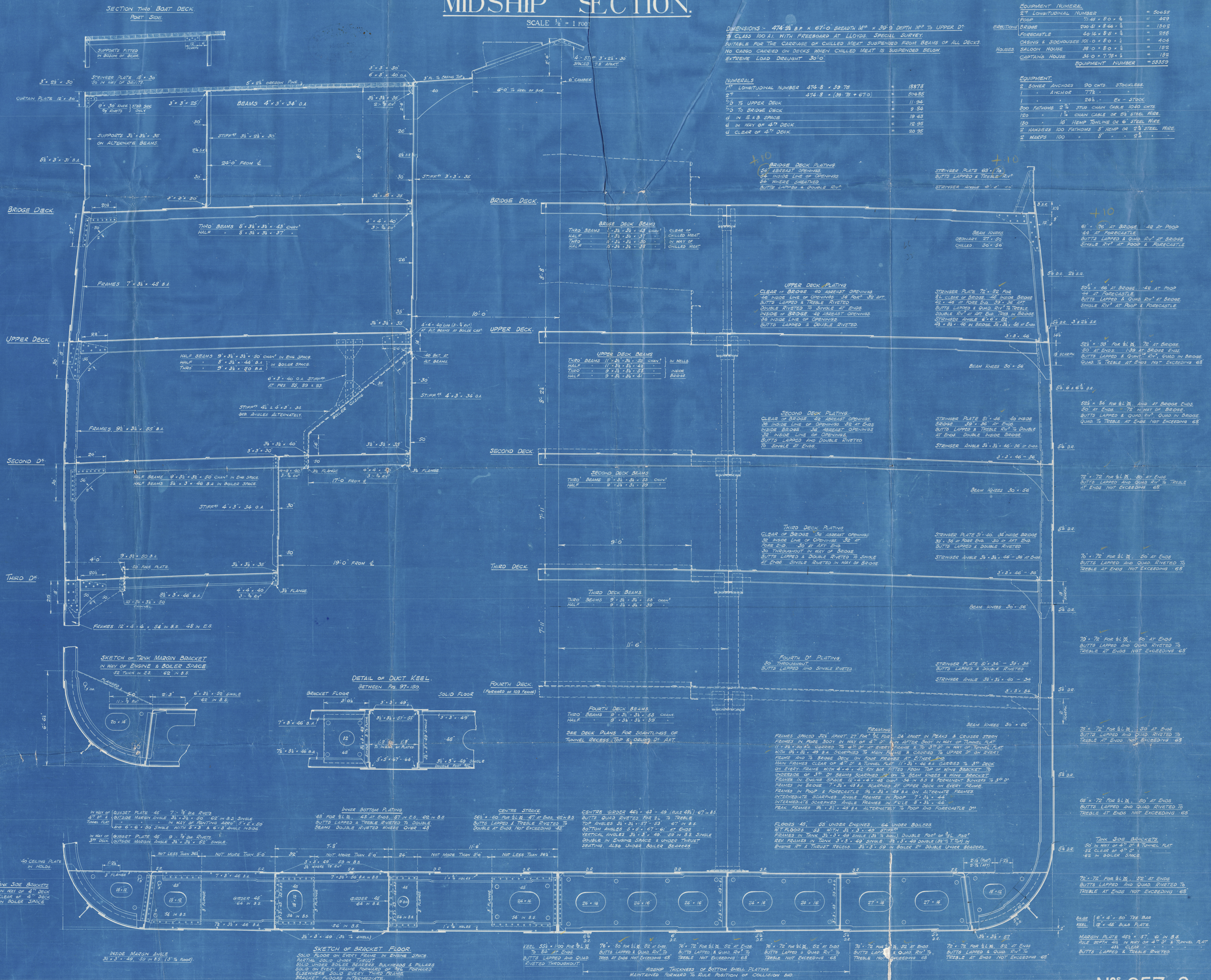
SCALE 1/2" = 1 FOOT

DIMENSIONS - 474' 9" B.P. x 67' 0" BREADTH M^o x 39' 9" DEPTH M^o TO UPPER D^o
 7 CLAS 100 AL WITH FREEBOARD AT LLOYD'S SPECIAL SURVEY.
 SUITABLE FOR THE CARRIAGE OF CHILLED MEAT SUSPENDED FROM BEAMS OF ALL DECKS
 NO CARGO CARRIED ON DECKS WHEN CHILLED MEAT IS SUSPENDED BELOW
 EXTREME LOAD DRAUGHT 30' 0"

NUMERALS	
1 st LONGITUDINAL NUMBER	474.8 x 39.75 = 18875
2 nd	474.8 x (39.75 + 67.0) = 50685
3 rd TO UPPER DECK	11.94
4 th TO BRIDGE DECK	9.64
5 th IN E & B SPACE	19.45
6 th IN WAY OF 4 th DECK	12.95
7 th CLEAR OF 4 th DECK	20.95

EQUIPMENT NUMERALS	
2 nd LONGITUDINAL NUMBER	50685
POOP	11.46 x 8.0 x 1/2 = 469
BRIDGE	200.41 x 8.66 x 1/2 = 1302
FORECASTLE	40.16 x 8.6 x 1/2 = 285
CASINGS & SIDEHOUSES	101.0 x 8.0 x 1/2 = 404
SALOON HOUSE	38.0 x 8.0 x 1/2 = 152
CAPTAIN'S HOUSE	34.0 x 7.75 x 1/2 = 132
EQUIPMENT NUMBER = 55359	

EQUIPMENT	
2 BOWER ANCHORS	90 CENTS STOCKLESS
1 ANCHOR	77 1/2
1	26 1/2 x 5 x 3700
100 FATHOMS	2 3/4 STUD CHAIN CABLE 1040 CENTS
120	1 1/2 CHAIN CABLE OF 5 1/2 STEEL WIRE
150	1 1/2 HEMP TOWLING OR 6 STEEL WIRE
2 HAWKERS	100 FATHOMS 5 HEMP OR 2 1/2 STEEL WIRE
2 HARPS	100 x 8' x 2 1/2



N^os 957-8.

W325-0103

Lloyd's Register Foundation

Palmer's

954-8

Midships Section (vessels as built)

S. S. STUART STAR.

NEWCASTLE ON TYNE.

Report No. 80665.

"AFRIC STAR."

Rpt No NWC 80753.

41