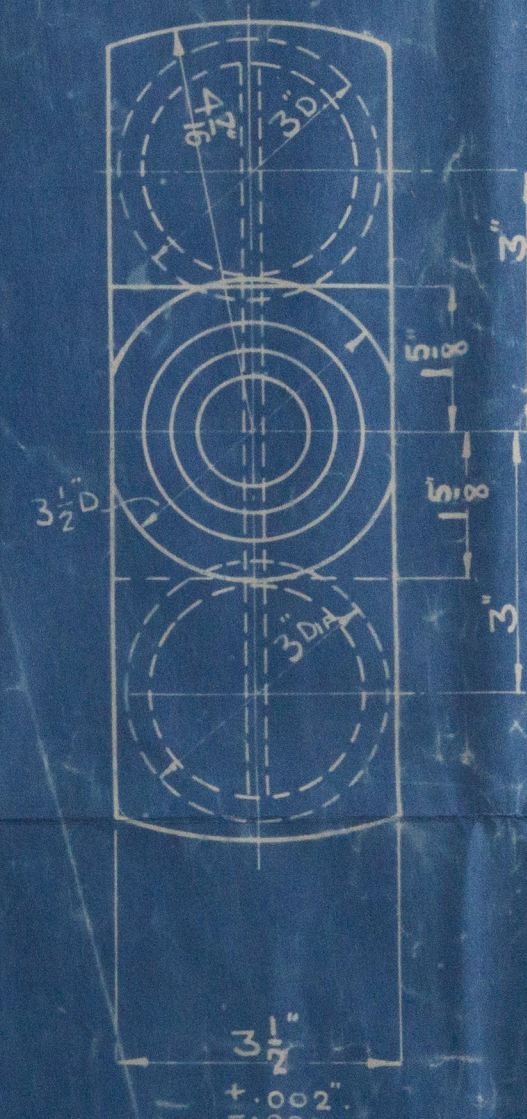


SIZES ALTERED 10/11/39. WIDTH OF WEB $3\frac{1}{2}"$ TO $3\frac{1}{2}"$, RADIUS $4\frac{11}{16}"$ TO $4\frac{7}{16}"$, FROM BW. FACE TO E $\frac{11}{16}"$ TO $\frac{11}{16}"$



CLEARANCES OF '010 ADDED TO WEBS. 25/7/35 SW.

24/ELCATION	
1 CRANKSHAFT	1 30/24 IN. TENSE
STATIONARY CRANKSHAFT	
DRAWN BY	BN
PASSED BY	
DATE	5/2/54

2500



W322-0172

RUSSELL, NEWBERRY & CO. LTD.
ENGINEERS,
ALTRINCHAM.

