

LLOYDS STAMP.
22-8-28.

T. S. MOTOR YACHT No 363

709 TONS. Y.M.

CONSTRUCTIONAL SECTIONS.

SCALE $\frac{1}{2}$ " = 1 FOOT.

To CLASS + 100 A.1. AT LLOYDS.

PRINCIPAL DIMENSIONS:-

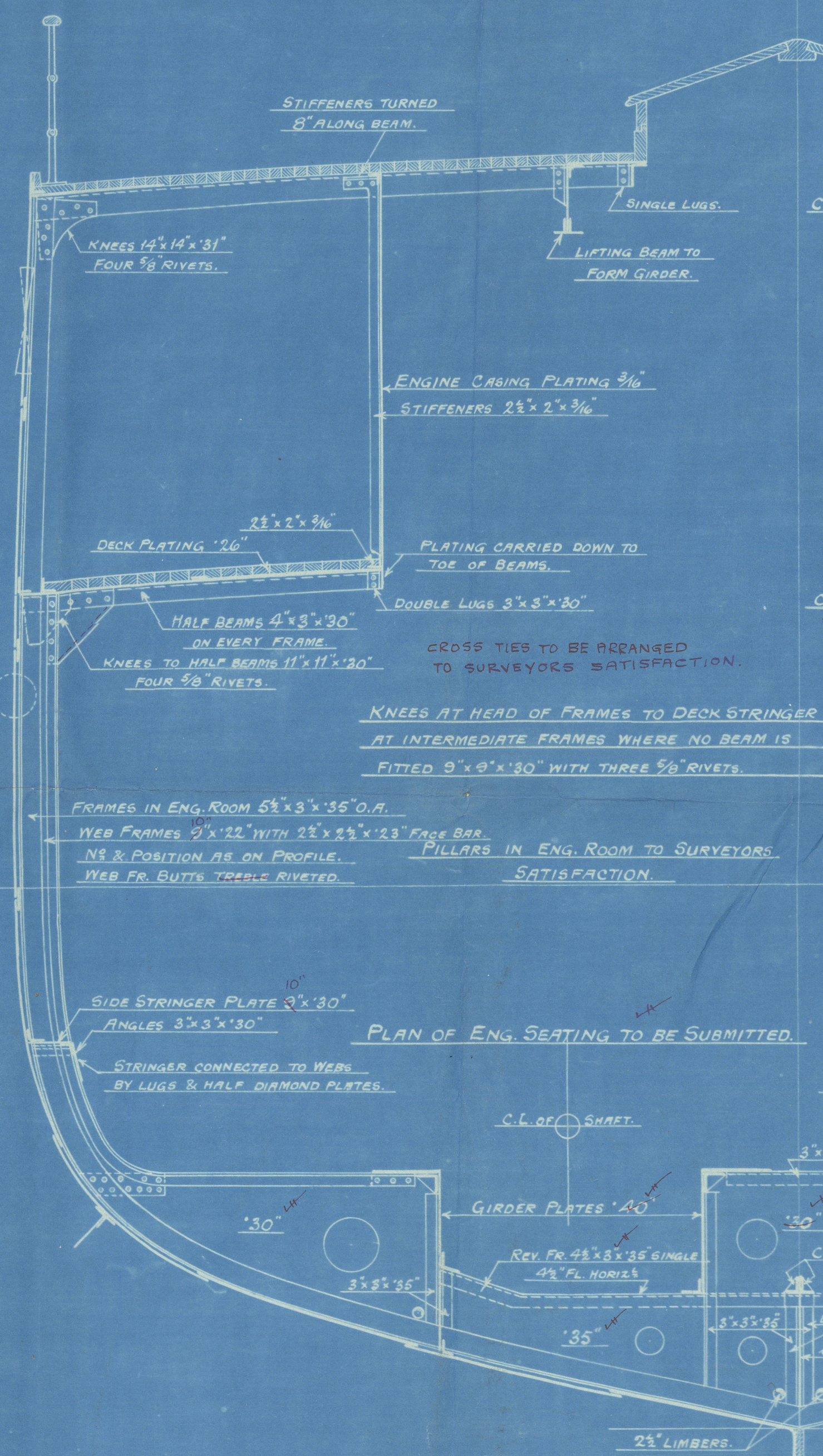
LENGTH, OVERALL.	200'-0"
" BET. PERPS	185'-0"
" ON W. LINE.	183'-0"
BREADTH, EXTR.	29'-2 1/2"
" MLO.	29'-1"
DEPTH, " AMIDS.	15'-9"
DRAUGHT, " "	10'-3"

EQUIPMENT:-

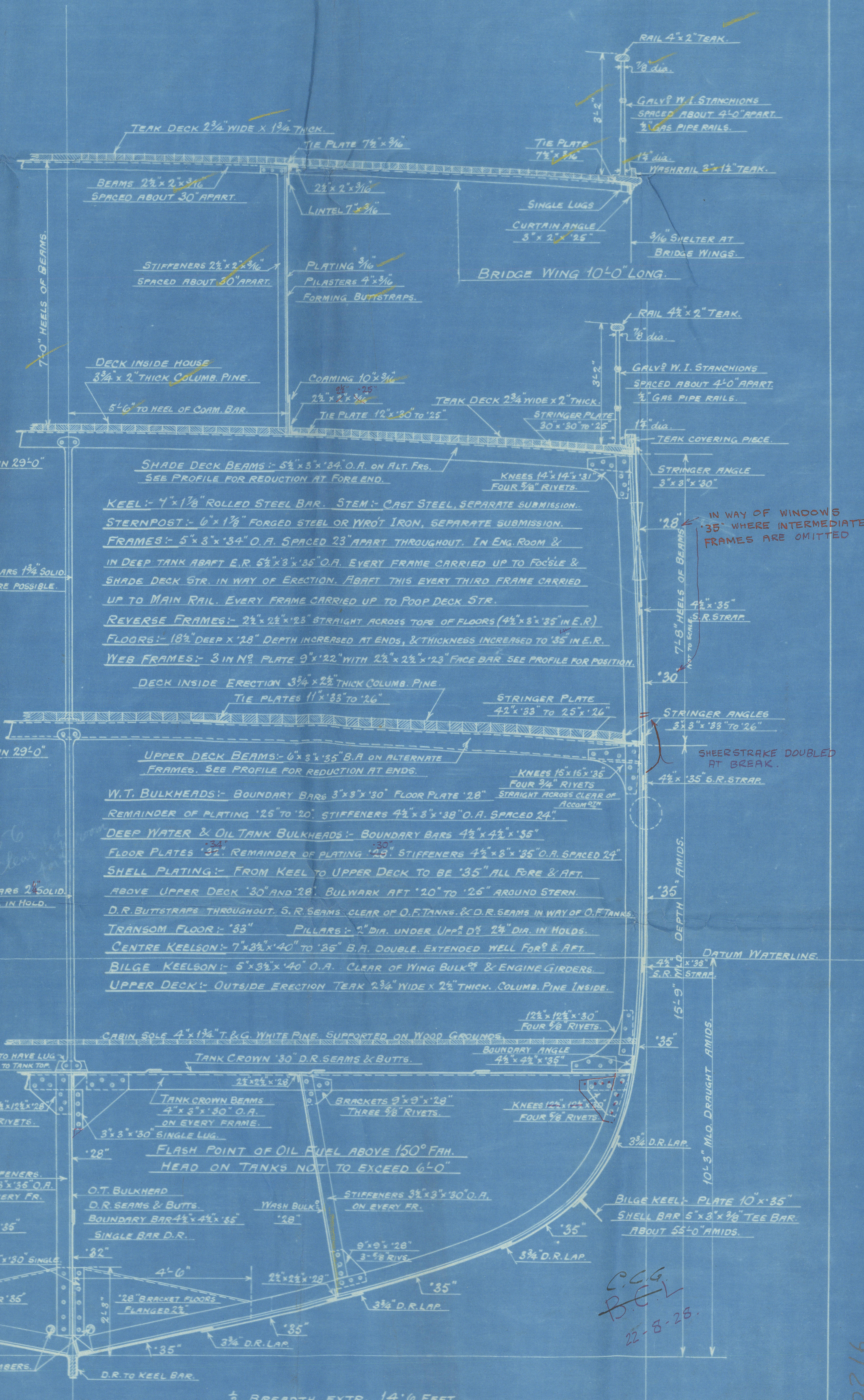
1 ST BOWER ANCHOR	13 3/4 CWTs	STOCKLESS GALV?
2 ND " "	12 1/2 " "	" "
3 RD " "	11 1/2 " "	" "
STREAM	3 1/2 " "	EX. STOCK. "
170 FATHOMS	1 1/2 " "	STUD LINK CHAIN CABLE. "
55 "	1 1/2 " "	STREAM CHAIN. "
90 "	8 " "	HAWSER SHROUD LAID LIGHTLY TARRED MANILLA
90 "	5 " "	WARP WHITE "

PART OF STRUCTURE	WIDTH OF CONNECTION	DIA OF RIVET	PITCH	NB OF ROWS	REMARKS
KEEL, STEM & STERNPOST TO SHELL		1"	5"	5"	D.R. ZIG-ZAG.
RUDDER SIDE PLATES TO RUDDER FRAME		3/4"	5"	3 1/2"	S.R.
FRAMES TO SHELL & BULKHEADS		5/8"	4"	4 1/2"	(EXCEPT IN F.W. TANK.
" " REV. FR. & FLOORS TO FLOORS		5/8"	4"	4 1/2"	"
C ^R KEELSON ANGLES TO REV. FR. & LUGS		5/8"	Two RIVETS AT EACH CONNECT		
" " " "		3/4"	4"	5 1/2"	REELED
BULKHEAD STIFFENERS TO BULK ^H PLATING		5/8"	4"	4 1/2"	
" " BOUNDARY BAR TO BULK ^H & DECK		5/8"	4"	2 1/2"	S.R.
" " " " SHELL		5/8"	5"	3 1/2"	S.R.
" " PLATING BEAMS & BUTTS	(28 SEAMS 24 BUTTS)	5/8"	4"	2 1/2"	S.R.
UPPER DECK STRINGER PLATE BUTTSTRAPS	8"x36"	5/8"	3 1/2"	2 1/2"	D.R. BUTTSTRAPS 1/8" WIDE.
" " " " TO BEAMS		5/8"	4"	4 1/2"	
" " " " ANGLES TO SHELL		5/8"	4"	2 1/2"	(MINIMUM NB OF RIVE BETH FR. = 5.
" " " " " DECK		5/8"	4"	2 1/2"	
" " " " TIE PLATE BUTTSTRAPS	4 1/2"	5/8"	3 1/2"	2 1/2"	D.R.
" " " " " TO BEAMS		5/8"	5"	3 1/2"	
LOWER DECK STRINGER PLATE BUTTSTRAPS	4 1/2"	5/8"	3 1/2"	2 1/2"	D.R.
" " " " " TO BEAMS		5/8"	4"	4 1/2"	(EXCEPT IN F.W. TANK.
" " " " " ANGLE TO SHELL		5/8"	4"	4 1/2"	
" " " " " DECK		5/8"	4"	4 1/2"	
" " " " TIE PLATE BUTTSTRAPS	4 1/2"	5/8"	3 1/2"	2 1/2"	D.R.
" " " " " TO BEAMS		5/8"	5"	3 1/2"	
BULGE KEEL PLATE TO TEE BAR		5/8"	5"	3 1/2"	
" " " " BUTTSTRAPS	8"x20"	5/8"	3 1/2"	2 1/2"	D.R. (DOUBLE STRAPS CHAIN RIVETED.
" " " " TEE BAR TO SHELL		5/8"	6"	3 1/2"	(ONE ROW IN EACH FLANGE. (BAYS MUST BE F.W. TANK. EXCEPT IN
SHELL PLATING, EDGES LAPPED	2 1/2"	5/8"	4"	2 1/2"	S.R.
" " " " STRAPPED	4 1/2"x35"	5/8"	4"	2 1/2"	S.R. F.W. TANK.
" " " " BUTTS	8"x38"	5/8"	3 1/2"	2 1/2"	D.R. CHAIN RIVETED.
BULKHEAD " " "	4 1/2"x22"	5/8"	4"	2"	S.R.
" " " " STRAP TO SHEERSTRAKE	4 1/2"x35"	5/8"	4"	2 1/2"	S.R.
" " " " TO RAIL BAR		5/8"	4"	3 1/2"	
FW. TANK. FRAMES TO SHELL PLATING		5/8"	5"	3 1/2"	
" " " " BEAMS TO TANK CROWN		5/8"	6"	3 1/2"	
" " " " SEAMS OF SHELL PLATING	2 1/2"	5/8"	3 1/2"	2 1/2"	S.R.
" " " " BULK ^H " "	2 1/2"	5/8"	3 1/2"	2 1/2"	S.R.
" " " " BUTTS " " " (LAP)	4 1/2"	5/8"	3 1/2"	2 1/2"	D.R.
" " " " STIFF ^S TO " " "		5/8"	6"	3 1/2"	
" " " " BOUNDARY BARS TO SHELL		5/8"	5"	3 1/2"	D.R. ZIG-ZAG.
SHADE & STRINGER PLATE BUTTSTRAPS	6 1/2"x35"	5/8"	4"	2"	D.R. CHAIN RIVETED.
FOG ^L " " " TIE PLATE BUTTSTRAPS	3 1/2"	5/8"	4"	2"	D.R. " "
DECK " " " STRINGER ANGLE TO SHELL		5/8"	4"	2 1/2"	
DECK " " " DECK BAR TO DECK		5/8"	4"	2 1/2"	
DECKHOUSES " " " COAMING		5/8"	4"	2 1/2"	
DECKHOUSES " " " COAMING BUTTS STRAPPED	6 1/2"x28"	5/8"	4"	2"	D.R. CHAIN RIVETED.

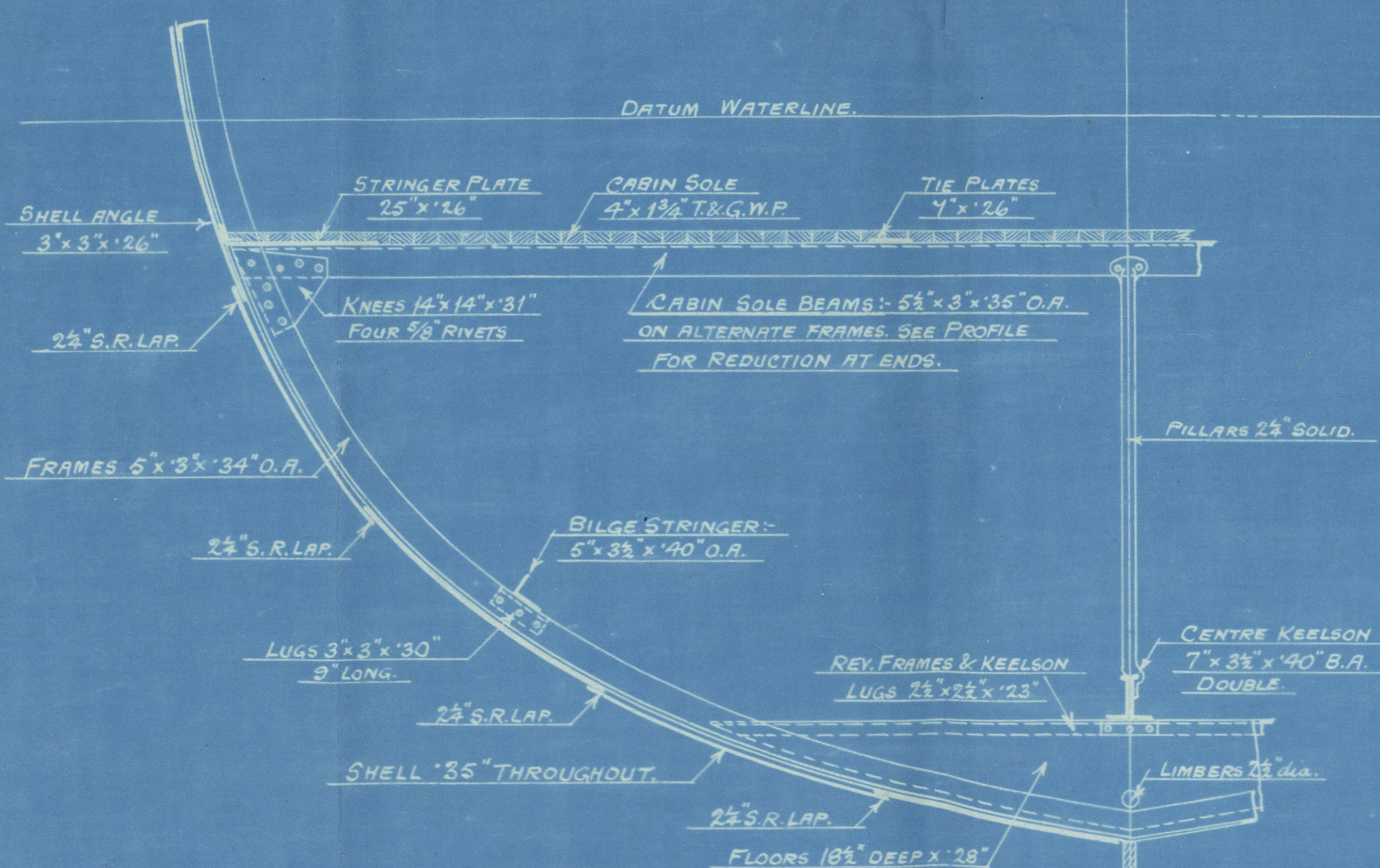
PART OF STRUCTURE	WIDTH OF CONNECTION	DIA OF RIVET	PITCH	NB OF ROWS	REMARKS
GARBOARD STRAKE TO KEEL		1"	ONE ADDITION RIVET PER FR. SPACE.		
SHELL PLATING, EDGES LAPS	3 1/2"	5/8"	3 1/2"	2 1/2"	D.R. LAPS MINIMUM
" " " " BUTTSTRAPS	8"x38"	5/8"	3 1/2"	2 1/2"	D.R. CHAIN RIV ^S
FRAMES TO SHELL & FLOORS		5/8"	5"	3 1/2"	
O.T. BULK ^H BOUNDARY BARS TO SHELL		5/8"	5"	3 1/2"	D.R. ZIG-ZAG.
" " " " " BND. & D ^S		5/8"	4 1/2"	2 1/2"	" "
TANK CROWN " " " SHELL		5/8"	5"	3 1/2"	" "
" " " " " TANK TOP		5/8"	4"	2 1/2"	" "
" " " " " & BULK ^H PLATING, EDGES	3 1/2"	5/8"	3 1/2"	2 1/2"	CHAIN RIV ^S
" " " " " BUTTSTRAPS	4 1/2"	5/8"	3 1/2"	2 1/2"	" "
" " " " " TO STIFF ^S & BEAMS		5/8"	6"	3 1/2"	" "



SECTION IN WAY OF ENG. ROOM.



SECTION IN WAY OF OIL FUEL TANKS.



SECTION CLEAR OF TANKS.

DRAWING OFFICE
14-8-28

13
14-8-28

Lloyd's Register
Foundation

W319-0216

T.S.M.Y.

N^o 363

Campan & Nicholson.
L^d.
S^o Tor.

CONSTRUCTIONAL
SECTIONS.

Verified Copy.

252
27/9/28

Rhodora

SON 13625

GEN. COX NO 881

W319-0216



© 2019

Lloyd's Register
Foundation