

12/11/25

# T.S. MOTOR YACHT N° 511

## PROFILE & HOLD

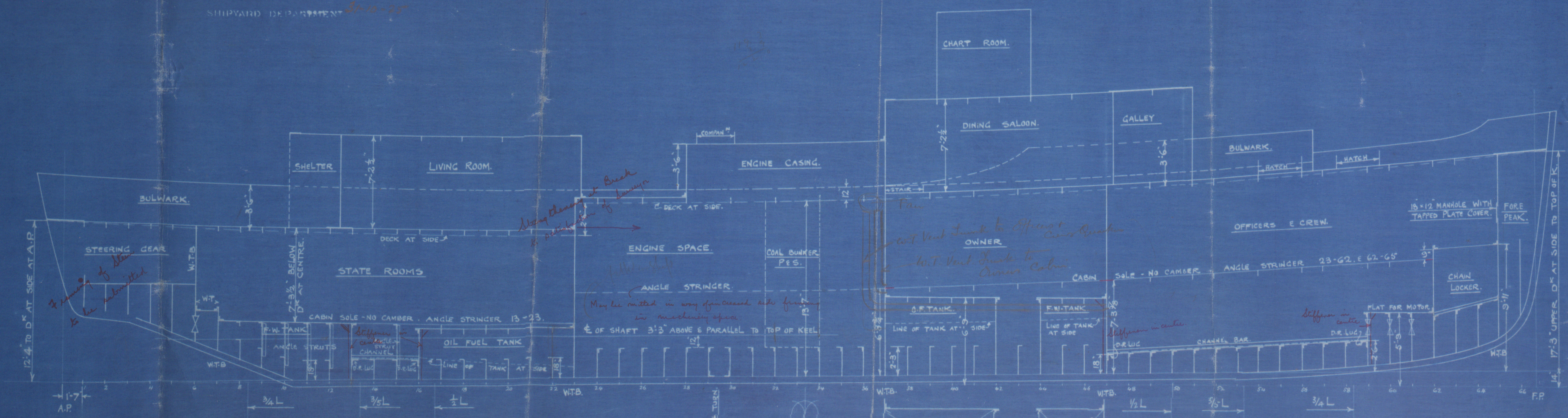
DIMENSIONS 116'-6" ON W.L. x 20'-0" B (M<sup>LD</sup>) x 13'-6" D (M<sup>LD</sup>) TOP OF KEEL.

SCALE: 1/4" = 1 FOOT.

ALEXANDER STEPHEN & SONS LTD.  
SHIPBUILDERS & ENGINEERS

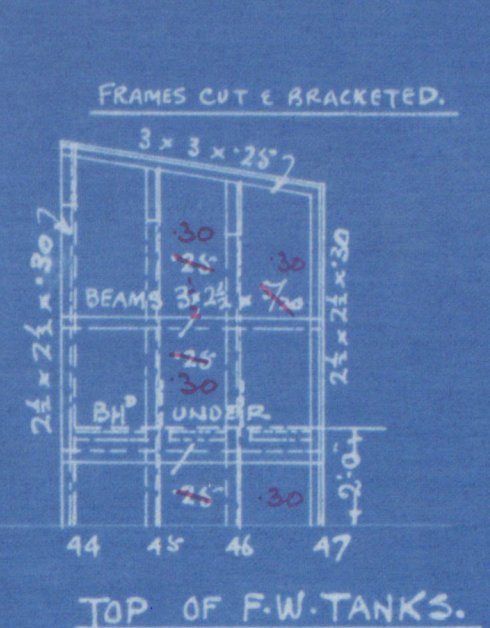
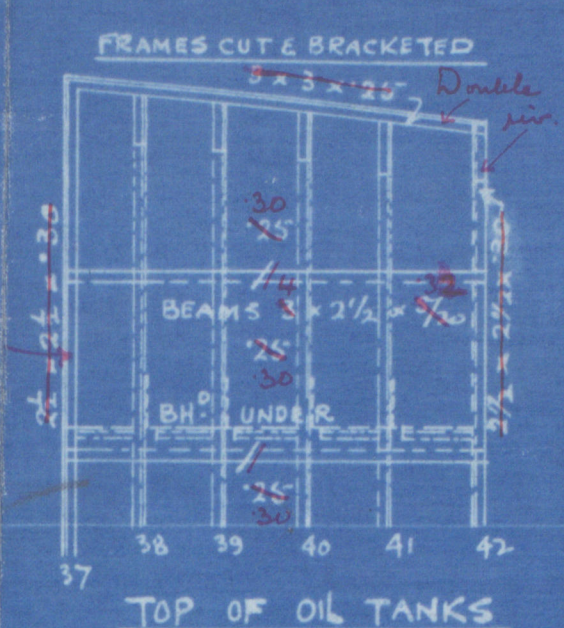
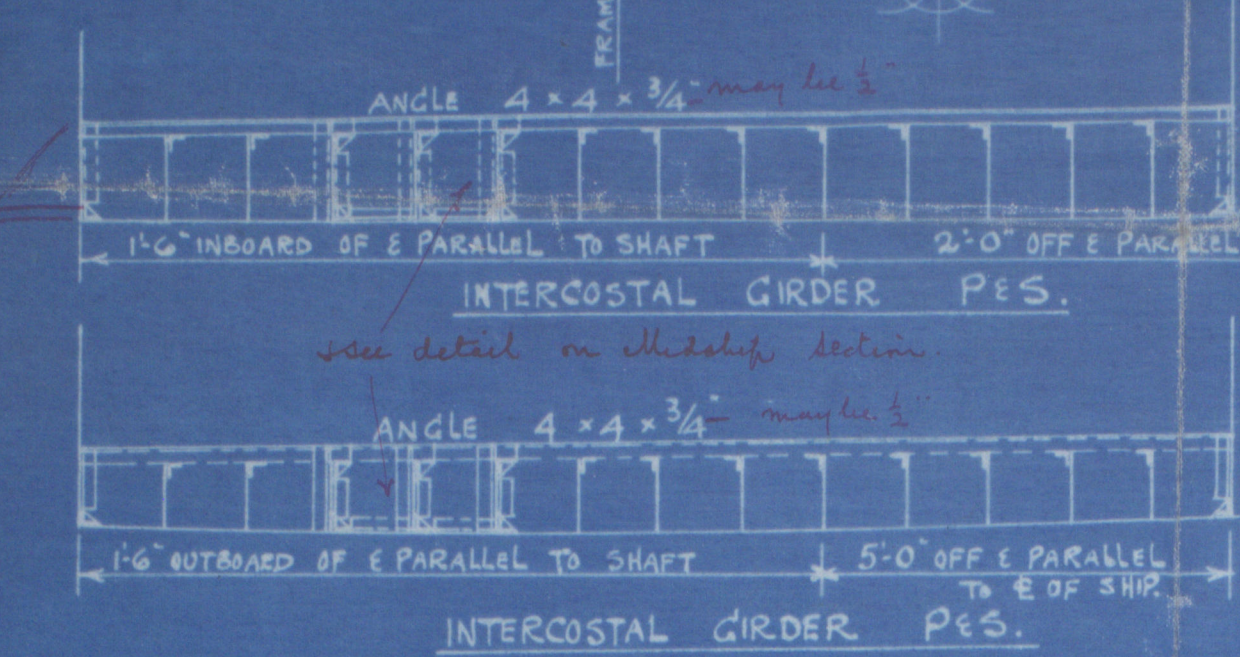
GLASGOW

PLAN N° 6 DATE 29-10-25  
SHIPYARD DEPARTMENT

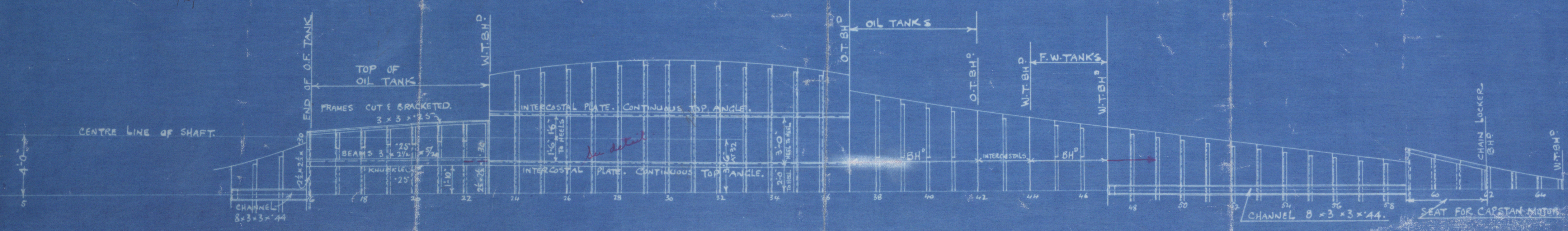


FRAMES SPACED 21" THROUGHOUT.

FRAMES SPACED 21" THROUGHOUT.



12/11/25



W315-0061



A. Stephens  
In Stephens 511

Profile + Holes

"atlantis"

E<sup>x</sup>

Mingary

GLASGOW REPORT No. 45771



© 2019

Lloyd's Register  
Foundation

W315-0061