

Office Copy

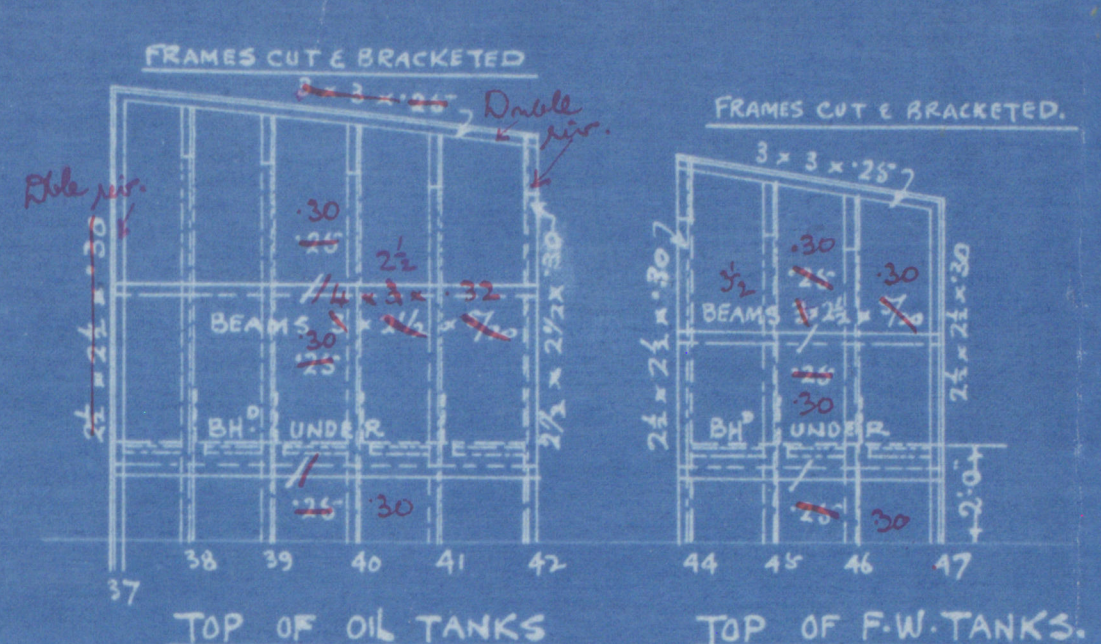
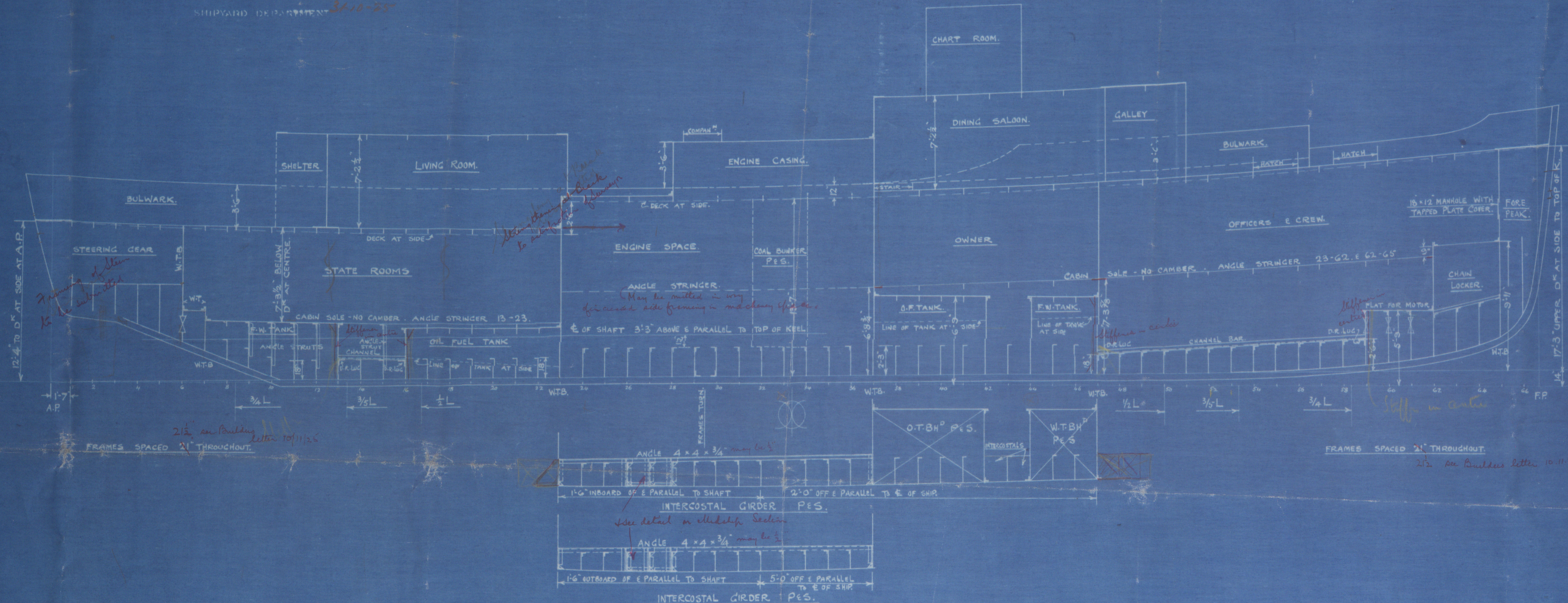
ALEXANDER STEPHEN & SONS, LTD.  
SHIPBUILDERS & ENGINEERS

GLASGOW

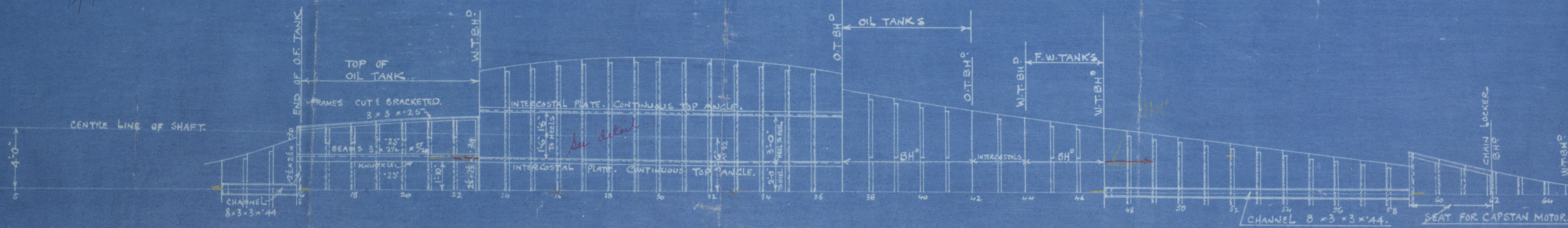
PLAN NO. 6 DATE 29-10-25  
SHIPYARD DEPARTMENT 3-10-25

# T.S. MOTOR YACHT N° 511 PROFILE & HOLD

DIMENSIONS 116'-6" ON W.L. x 20'-0" B (M<sup>LD</sup>) x 13'-6" D (M<sup>LD</sup>) TOP OF KEEL.  
SCALE: 1/4" = 1 FOOT.



BCL  
13/11/25

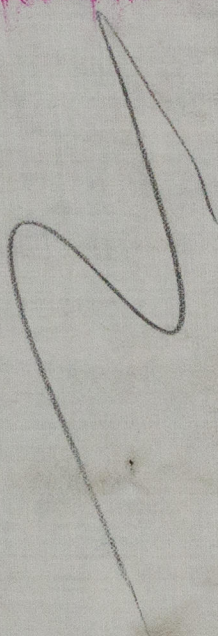




Profile shold

"Atlantis Rpt- No  
Ex 4771  
murgans

GEN. BOX NO 755



W315-0060



© 2019

Lloyd's Register