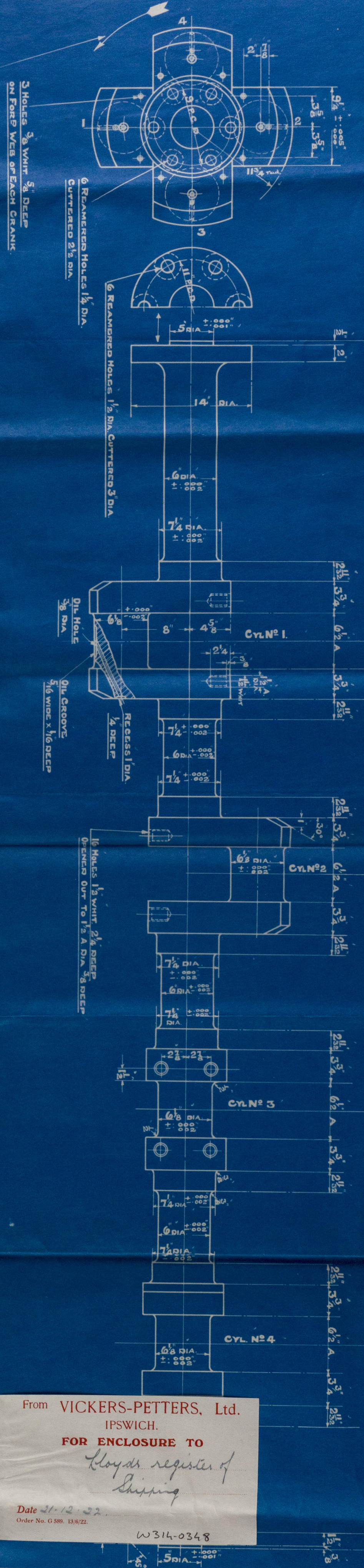


27/12/22

VIEW LOOKING AFT

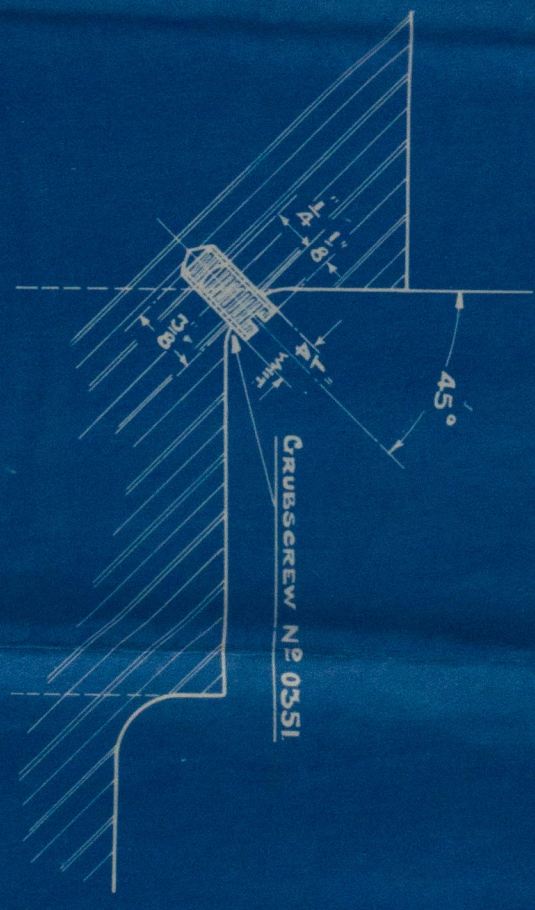


DIRECTION OF ROTATION OF ENGINE OF SINGLE SCREW INSTALLATION  
AND OF STARBOARD ENGINE OF TWIN SCREW INSTALLATION

NOTE CRANKPINS TO BE PARALLEL WITH AXIS OF SHAFT TO WITHIN .001"  
CRANK THROWS TO BE WITHIN LIMITS  $\pm .005$

MATERIAL TO BE TO LLOYD'S REQUIREMENTS

DETAIL OF DRILLING AND TAPPING  
FOR CRANKWASHER STOP PINS  
FULL SIZE



From VICKERS-PETTERS, Ltd.  
IPSWICH.  
FOR ENCLOSURE TO  
*Lloyds register of Shipping*  
Date 27-12-22  
Order No. G 589, 13/6/22  
W 314-0348

27-12-22  
21 DEC 1922  
IPSWICH

MACHINED ALL OVER

DRAWN BY	JE	14/12/22
TRACED BY	LB	20/12/22
CHECKED BY	<i>LB</i>	21/12/22
APPROVED BY	<i>YH</i>	
PATTERN N°		
MATERIAL	S.M.A.S.	

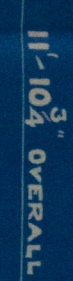
CRANKSHAFT

SCALE 1/2" = 1'-0"

ISSUE N°	DATE OF ISSUE	ALTERATIONS	ALT BY	PART N°
				28154
				DWG N°
				S37

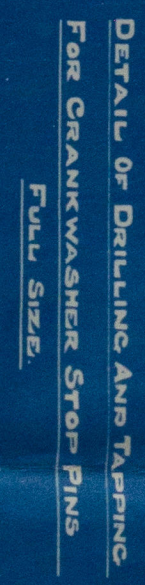


**VIEW LOOKING AFT.**



3 HOLES  $\frac{3}{8}$ " WIDT  $\frac{5}{8}$ " DEEP  
ON FORD WEB OF EACH CRANK

### MATERIAL TO BE TO LLOYD'S REQUIREMENTS



## MACHINED ALL OVER

DRAWN BY	JE	14/12/22	<p>DESCRIPTION</p> <p><b>CRANKSHAFT</b></p> <p>SCALE 1 1/2" = 1'-0"</p>	ISSUE NO	DATE OF ISSUE	ALTERATIONS	ALT BY	PART NO
TRACED BY	LB	20/12/22						
CHECKED BY	LB	21/12/22						
APPROVED BY	JA							
PATTERN NO	MATERIAL							



Vickers - Pettus.

Eng 440 + 441

CRANK. SHAFT

W314-0348



© 2019

Lloyd's Register  
Foundation