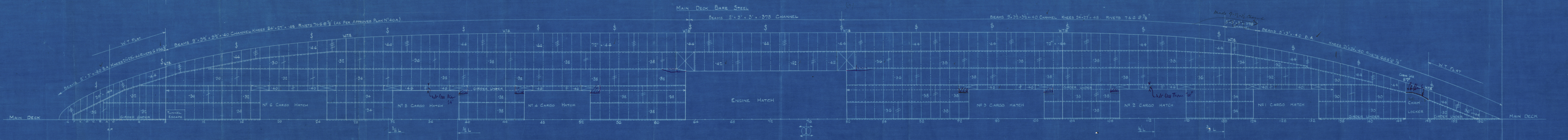
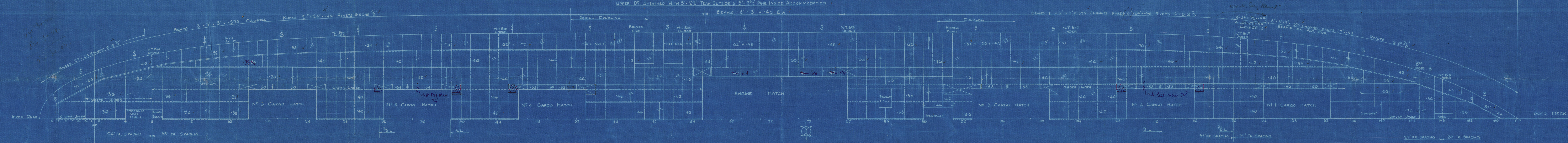
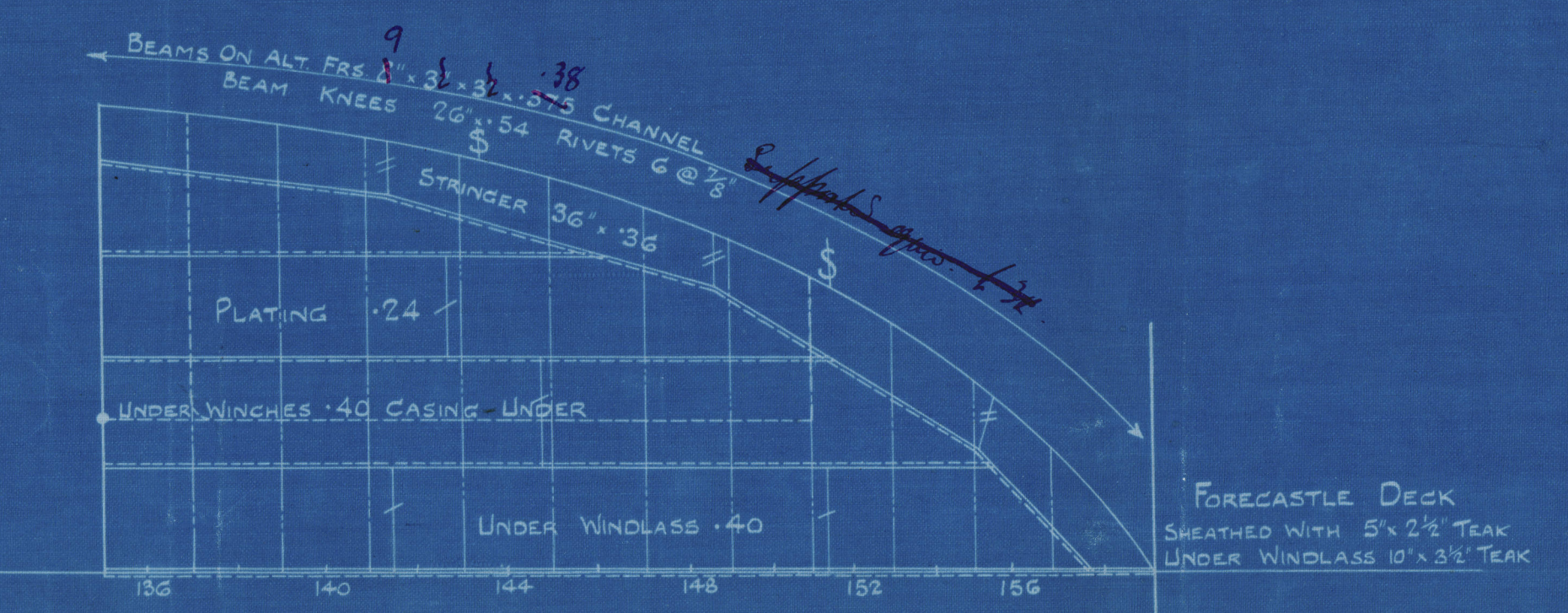
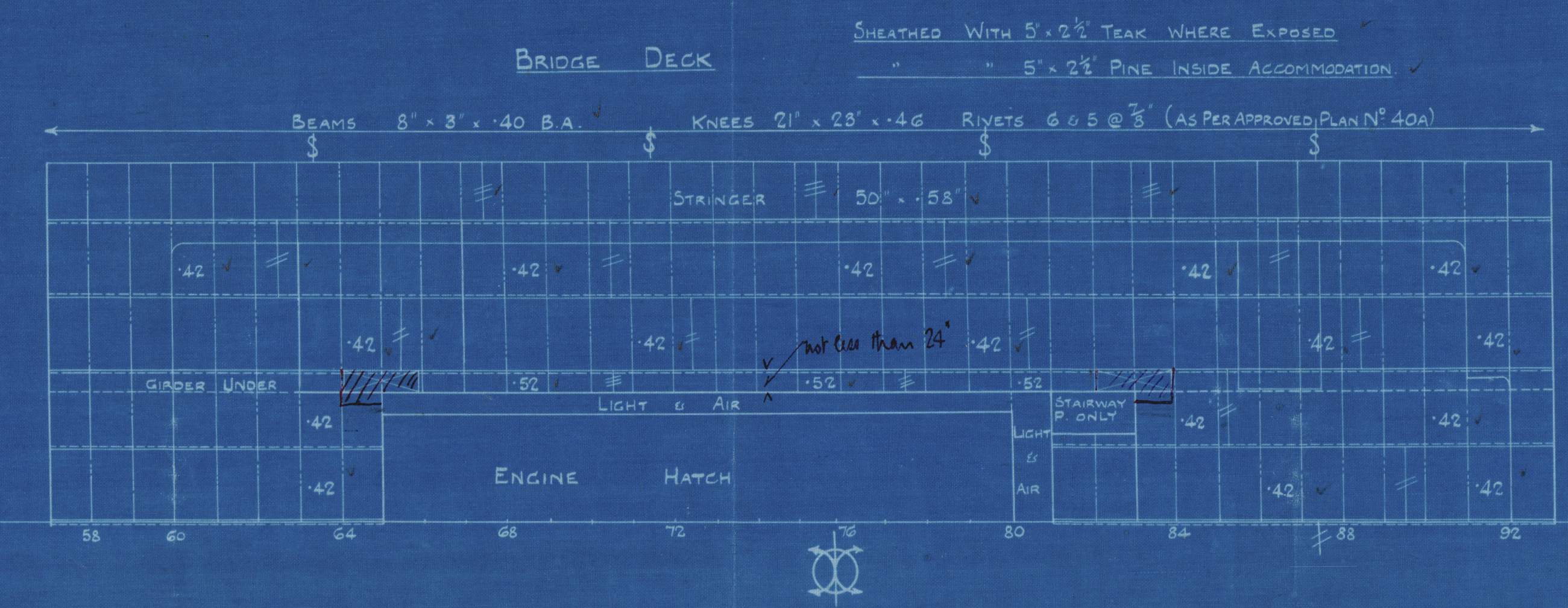
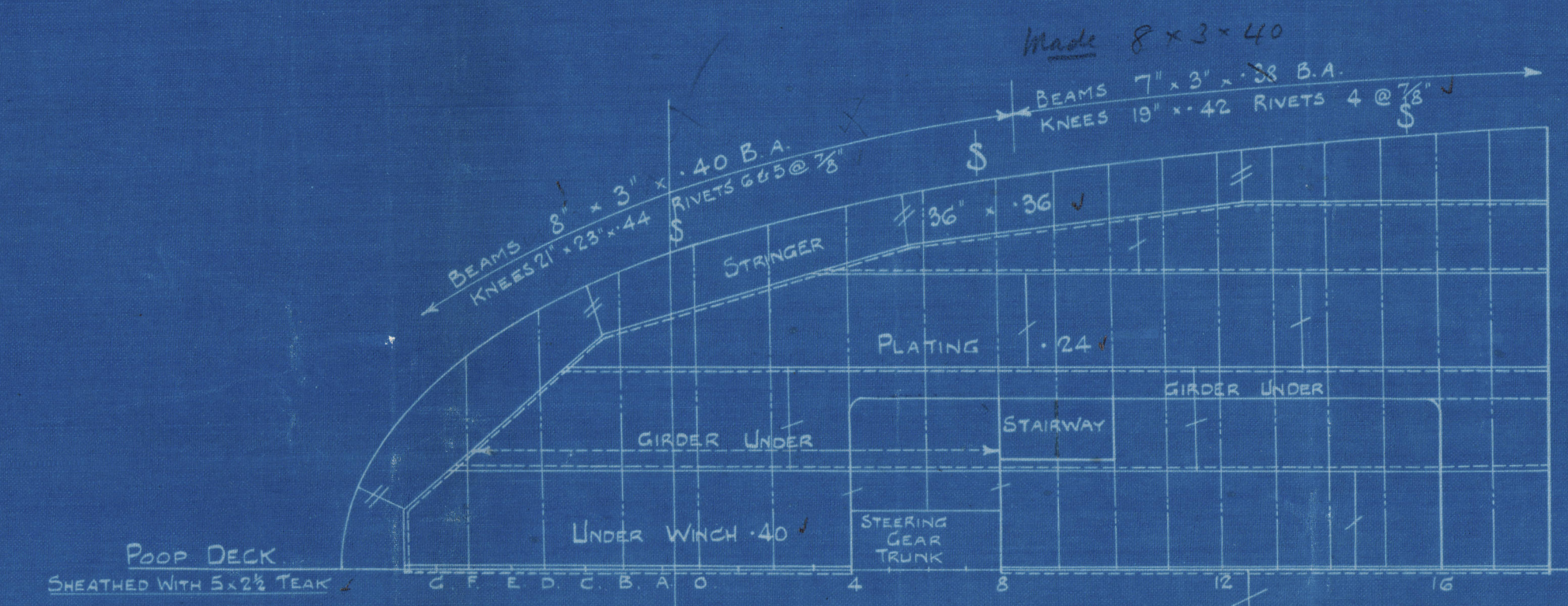


ALEX STEPHEN & SONS, LTD.
SHIPBUILDERS & ENGINEERS
GLASGOW
PLAN NO. 2A.
DATE 11.8.20
12.8.20

T.S.S. N^o 497
STEEL DECKS
SCALE $\frac{1}{8}$ " = 1 FOOT

MOULDED DIMENSIONS: 430'-0" B.P. x 54'-6" x 32'-4" TO UPPER DK.
TO CLASS 100 A.1 AT LLOYDS



APPROVED
LLOYDS REGISTER OF SHIPPING
Montgomery per 11/11/20
DATE 11.8.20


Stephens 497.

Deck Plans

See also detail app' plans
of (1) main deck
(2) upper deck.

GLASGOW REPORT No.

42799

 Dalgoma

W313-0177



© 2019

Lloyd's Register
Foundation