

SHEER FORD = 8'-0"  
 \* 8 L FOR = 4'-57"  
 \* AFT = 2'-23"  
 \* AFT = 4'-0"

TONNAGE COEFF. = .73

EQUIPMENT	Nº	
54' 50" x 32' 33" = 86' 83" x 430	-	37337
POOP 46' 42" x 8' 3"	-	278
BRIDGE 105' 00" x 8' 3"	-	630
POOP HOUSES 31' 33" x 8' 3"	-	314
POOP HOUSES 31' 33" x 8' 3"	-	125
BOAT DECK 93' 33" x 8' 3"	-	373
BOAT DECK	-	-
E & B CASINGS	-	772

EQUIPMENT	Nº	
2 BOWER ANCHORS EACH 68 CWTB STOCKLESS	-	-
1 STREAM	-	58 1/2
1 KEDGE	-	19 * EX STOCK
270 FATHOMS 2 3/4" STUD CHAIN CABLE	-	8
90 * 1 1/2" STREAM CHAIN OR 5" STEEL WIRE	-	-
120 * 15" HEMP OR 5 1/4"	-	-
2 @ 90 * 8" HAWSER OR 2 3/4"	-	-
2 @ 90 * 7"	-	2 1/2

*Revised layout to steel wire*

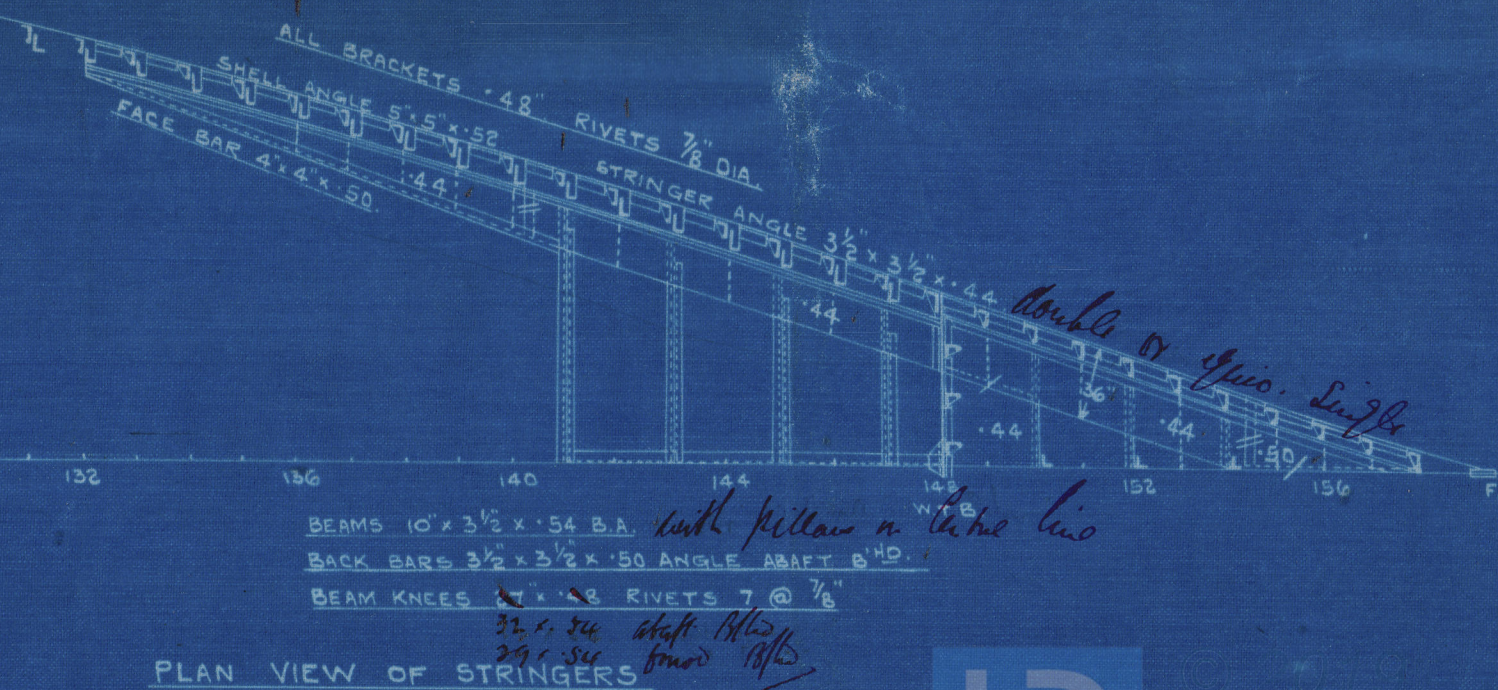
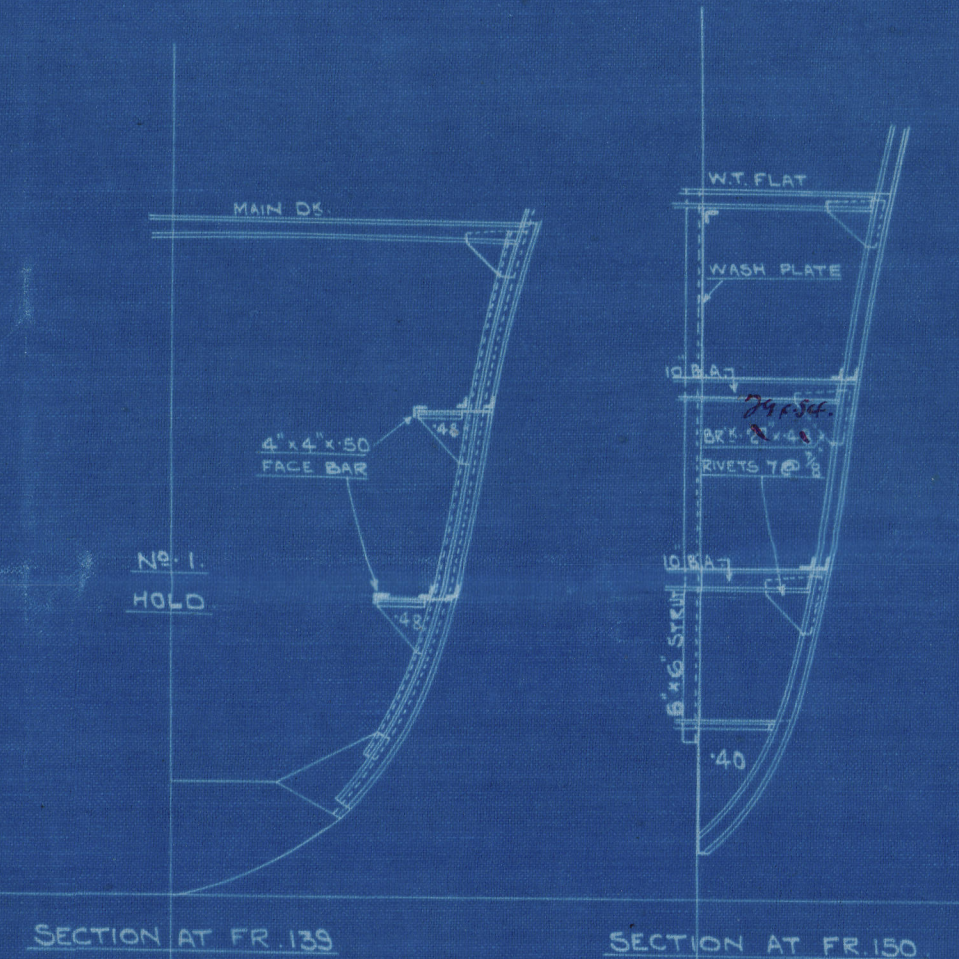
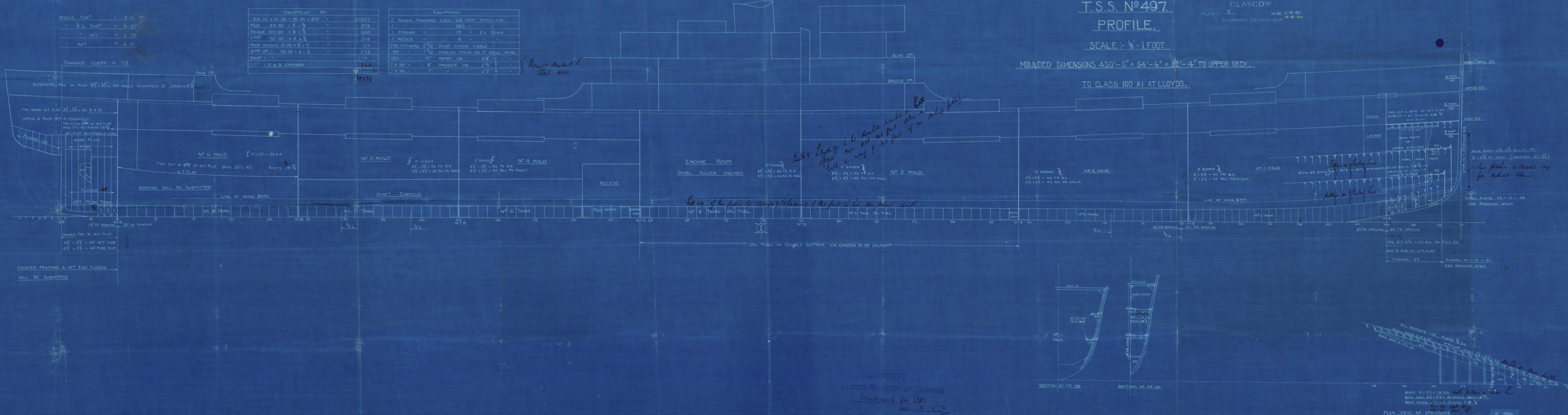
# T.S.S. Nº497. PROFILE.

SCALE: 1/8" = 1 FOOT.

MOULDED DIMENSIONS 430'-0" x 54'-6" x 32'-4" TO UPPER DECK.

TO CLASS 100 A1 AT LLOYDS.

ALEX. STEPHEN & SONS, LTD.  
 SHIPBUILDERS & ENGINEERS  
 GLASCOW  
 PLAN Nº 2  
 SHIPYARD DEPARTMENT  
 11-8-20  
 12-8-20



APPROVED  
 LLOYDS REGISTER OF SHIPPING  
 Montagu Street, London E.C. 3  
 DATE 18-9-20



Stephens 497

Profile

GLASGOW REPORT No

#2799

Dalgoma

W313 - 0176



© 2019

Lloyd's Register  
Foundation