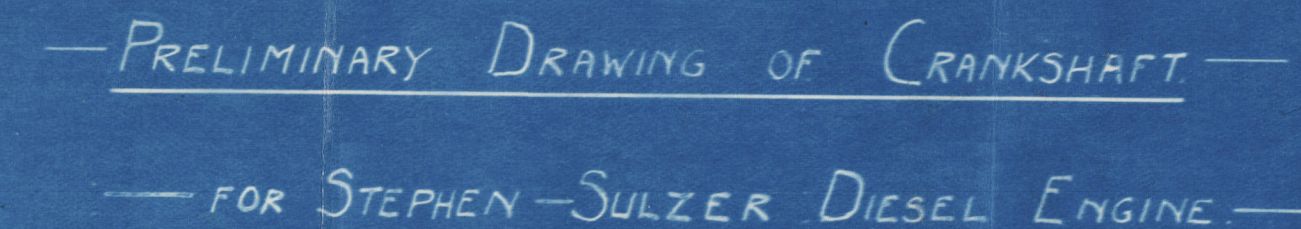


15/16/20

— ORDER OF FIRING —

—PARTICULARS OF ENGINES.

TWO CYCLE - SINGLE ACTING
PORT - SCAVENGING



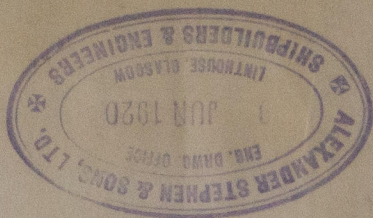
— SCALE :- 1 : 20 & 1 : 10. —

373850

2. J.
15/6/20.

ARL

DRAWN BY	
CHECKED BY	<i>[Signature]</i>



A Stephen & Sons
Crank & Thrust shaft

Engs No 497
Twin Screw Diesel Engs
Two Cycle

Dalgoma

Stephens 497

42799

GLASGOW REPORT No.

W313 - 0173



© 2019

Lloyd's Register
Foundation