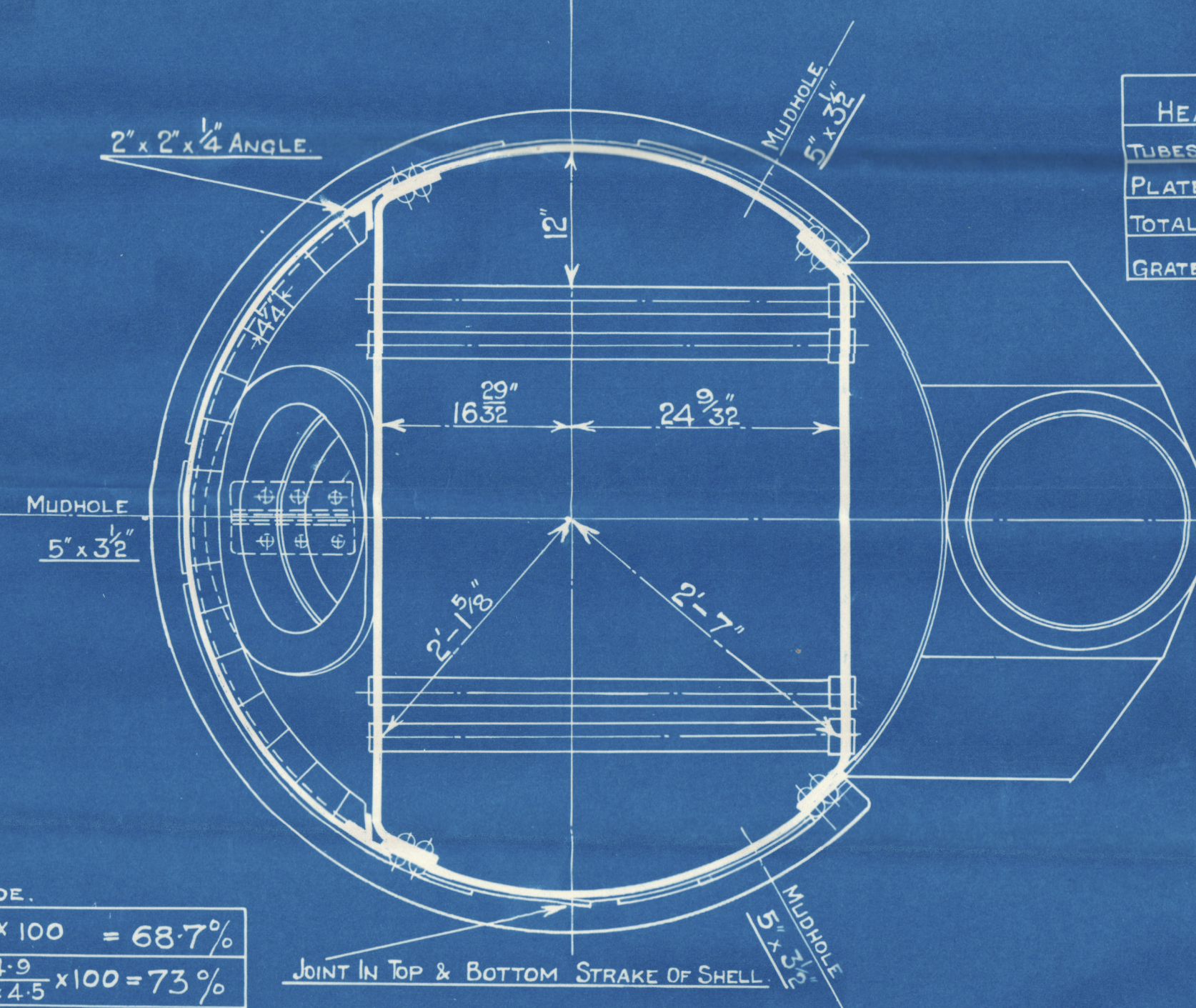


HORIZONTAL FLUE TUBES.



MAN & MID-DOORS MADE OF TEST
STUDS SCREWED THROUGH DOORS
MADE BY MESSRS BARR THOMSON

MIDDOLE

45° 45°

RING 6" X 6 3/4"
W/ASHOLE 16/12

MIDDOLE

PLAN OF SHELL CROWN JOINT.

INNER ROW RIVETS
FLUSH INSIDE.

4 RIVETS
FLUSH OUTSIDE

CO. ANNAN LTD.

Note
This fruit is similar
in all respects to
Drawing No 11541
approved 1-10-17.
Except that Aspid.
Extension for oil firmly
is 2" shallower.

SCALE 1 INCH TO 1 FOOT.

PLATES NOT EXPOSED TO FLAME OR FLANGED.....28 TO 32 TONS.
PLATES EXPOSED TO FLAME OR FLANGED EXCEPT FCE CROWN.....26 TO 30 TONS.
FURNACE CROWN.....26 TO 29 TONS.

DRAWING N° 12426.

BOARD TRADE.	
PLATE	$2.5 = 78/25 \times 100 = 68.7\%$
RIVETS	$23 \times 2 \times 4.79 \times 4.9 = 100 = 73\%$
FRONT TUBE PLATE	$4 - 2.593 \times 100 = 35.1\%$
BACK TUBE PLATE	$4 - 2.5 \times 100 = 37.5\%$
SHELL	$62720 \times 68.7 \times 2 \times 4.375 = 116 \text{ LBS}$
FRONT TUBE PLATE	$58240 \times 35.1 \times 7.875 = 134 \text{ LBS}$
BACK TUBE PLATE	$58240 \times 37.5 \times 5.9375 = 170 \text{ LBS}$
FURNACE CROWN.	$14000 \times 5 = 122 \text{ LBS}$
OGEER RING	$43.5 \times 20000 = 100 \text{ LBS}$

COCHRAN & CO ANNAN LTD
ENGINEERS & BOILERMAKERS
ANNAN, SCOTLAND.

W813-6167

COCHRAN & CO., ANNAN, Ltd.

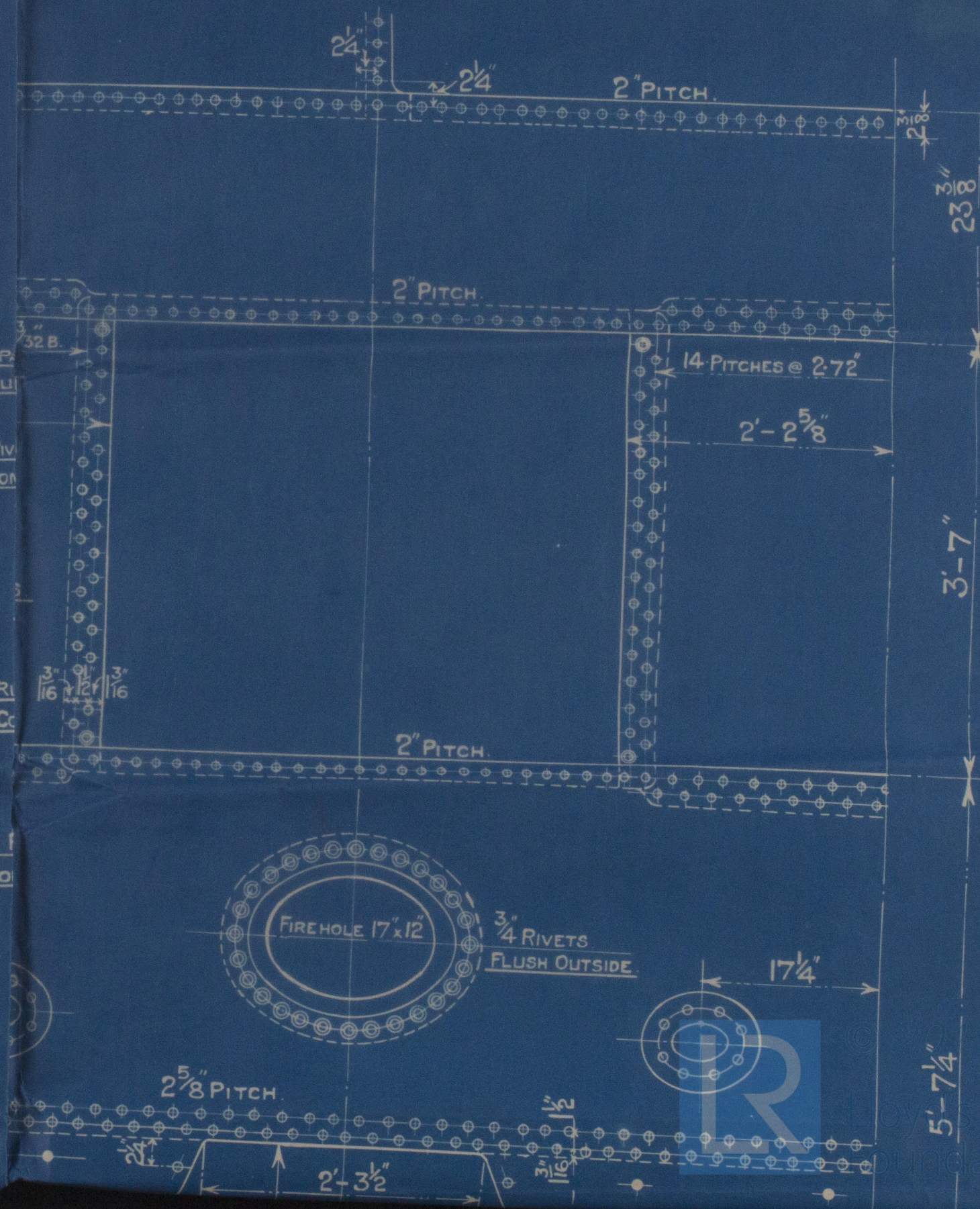
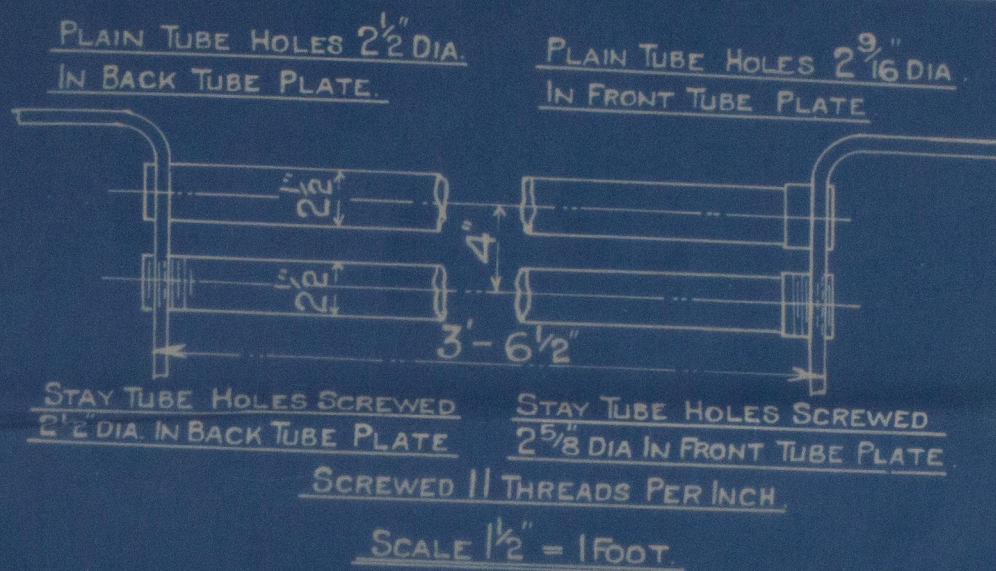
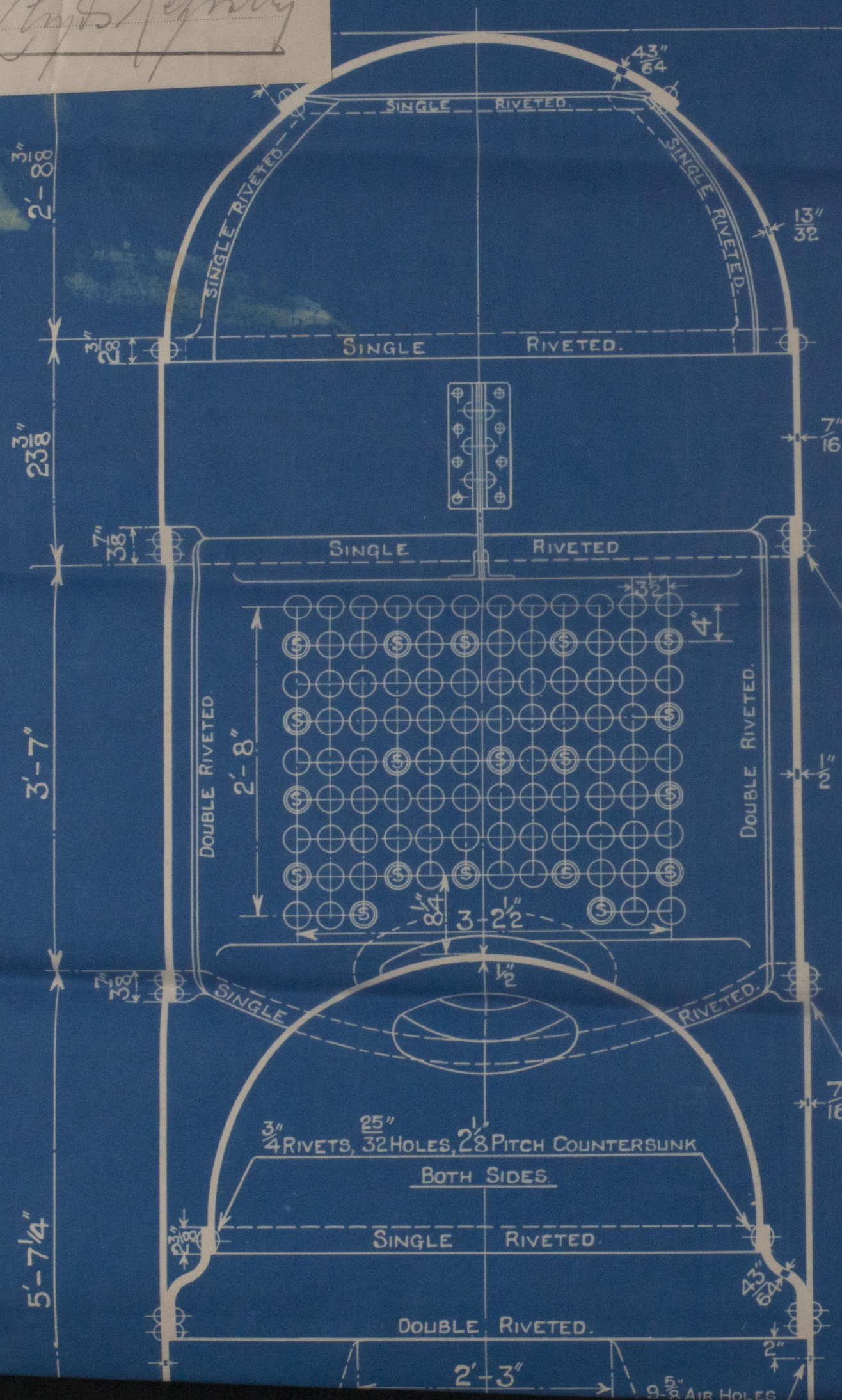
No. 202. 11-20.

Enclosure

FOR

Messrs

Lyons Reentry



COCHRAN & CO., ANNAN, LD.

Boiler No. 8647

Drawing No. 12426

Similar to 11541,

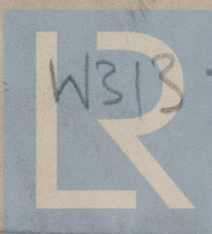
100 lbs per sq inch

mark on boiler.

No 15831
Lloyds Lat-
200 lbs
HP. 100 lbs
PMCA 20/5/21

GLASGOW REPORT No.

41128.



W313 - 0167

© 2019
Lloyd's Register
Foundation