

# NORTHUMBERLAND ENGINE WORKS

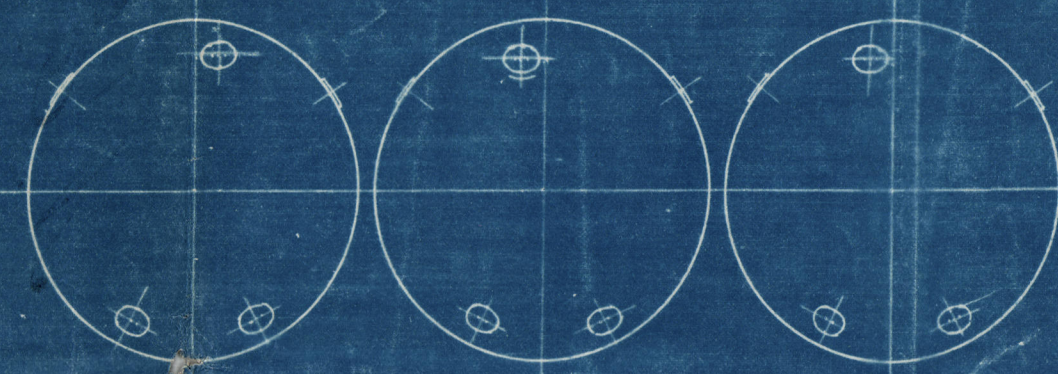
TRACING 565

SCHEDULE L.

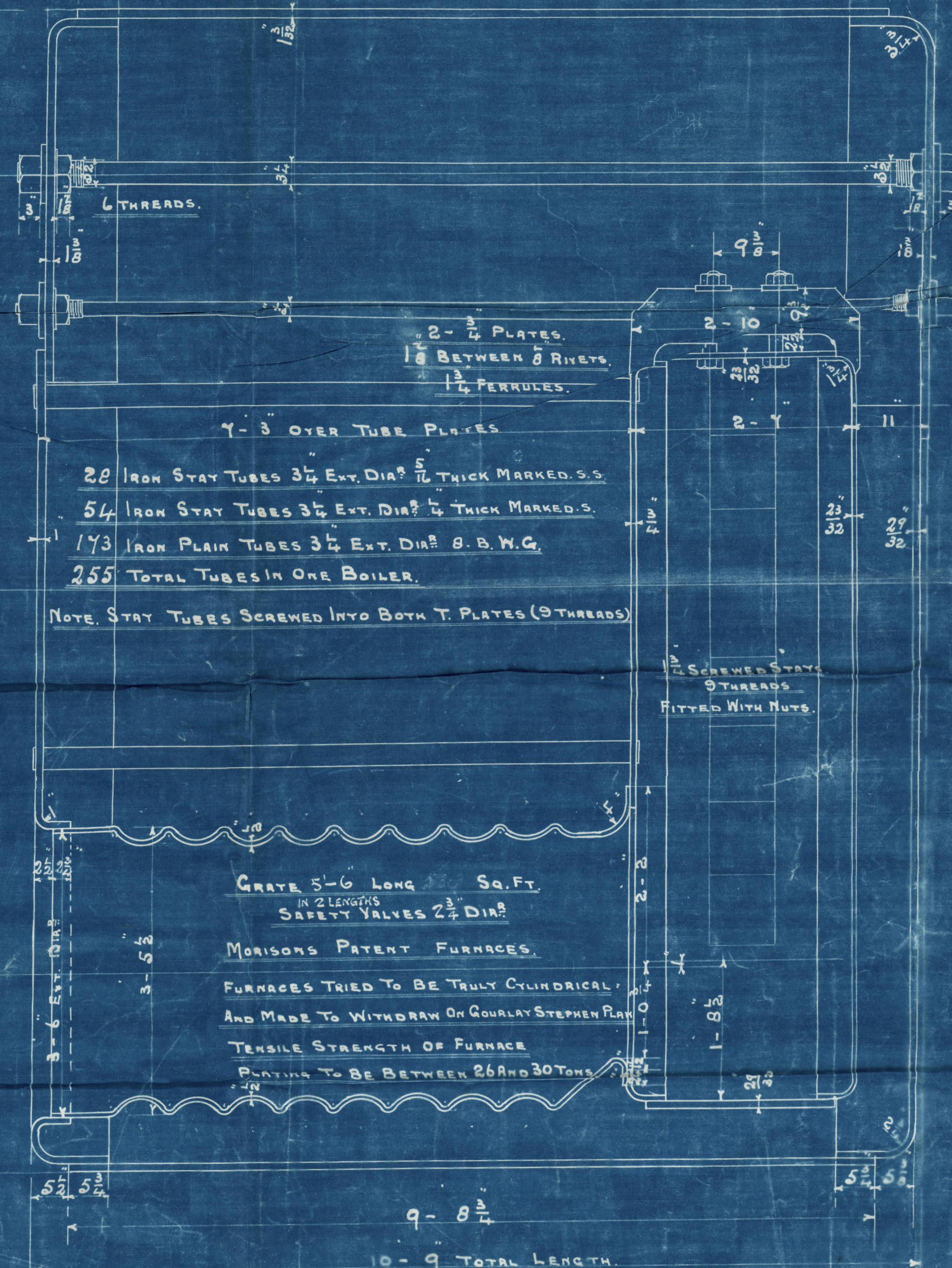
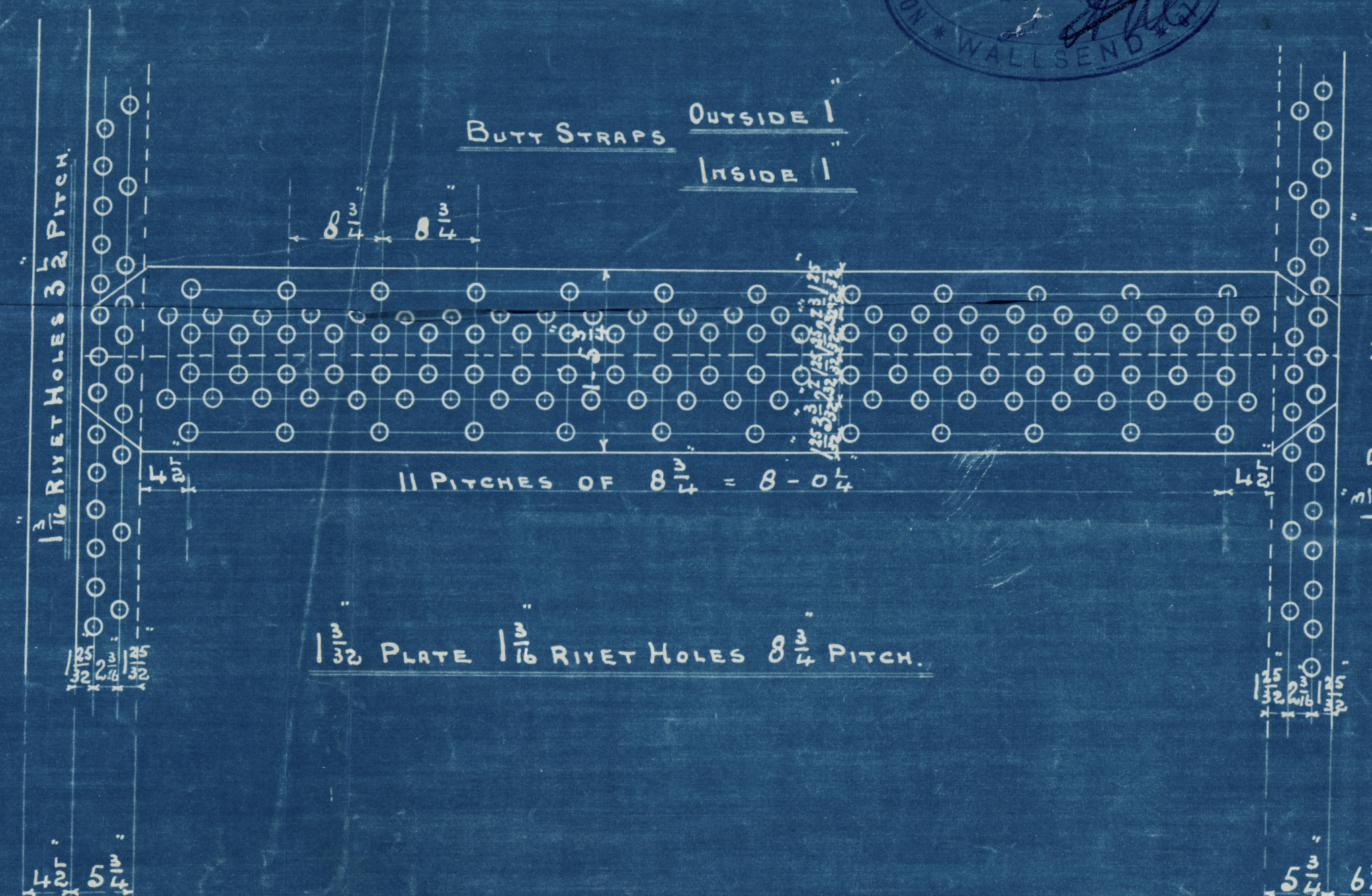
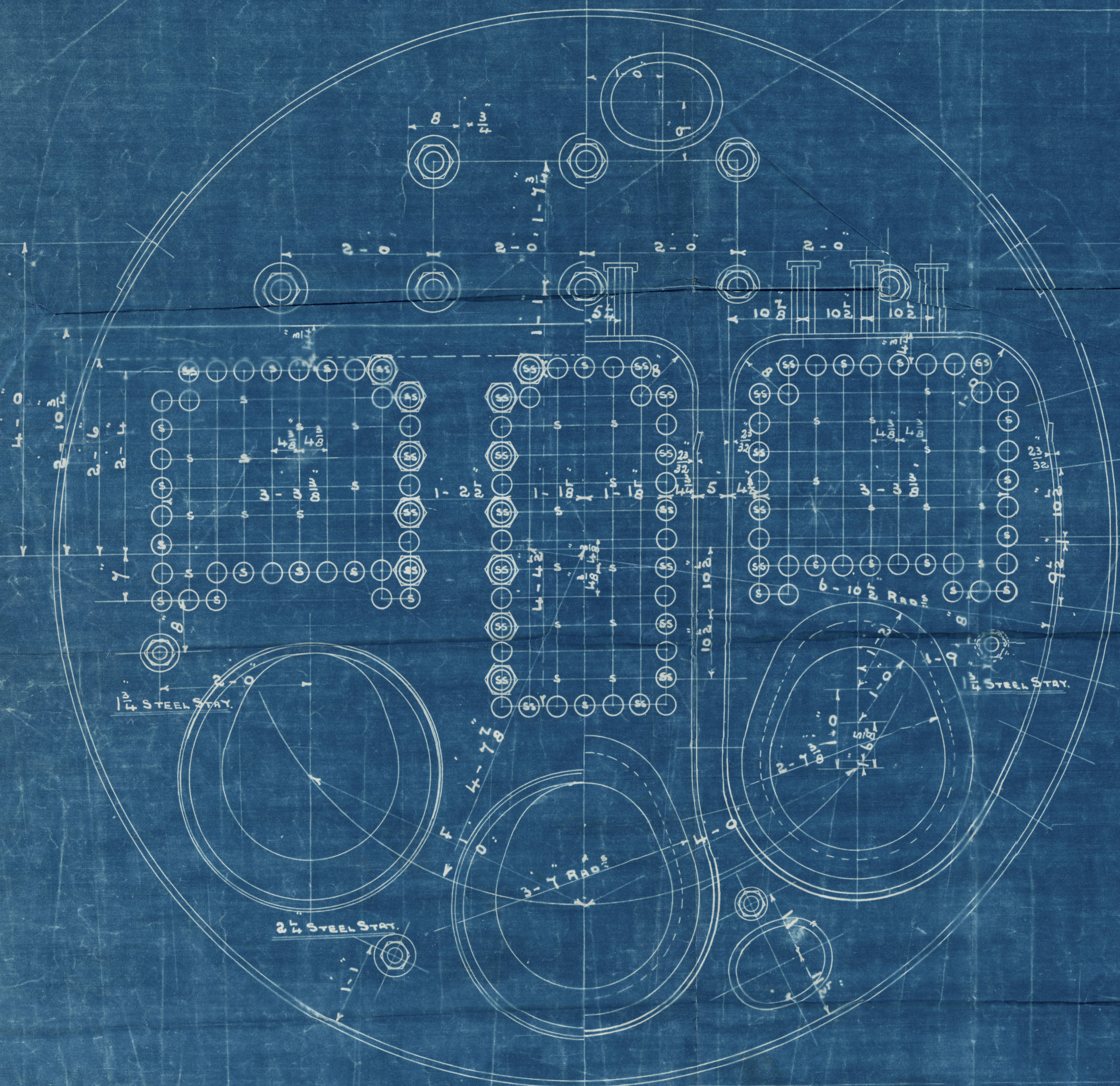
STEAM BOILER.

SCALE 1 INCH = ONE FOOT.

Approved by Lloyds 10/2/13



VIEW LOOKING ON BACK OF BOILERS SHOWING POSITION OF MANHOLES AND BUTT JOINTS.



STATS MARKED THUS  $\bigcirc \frac{1}{8}$  DIA (9 THREADS)  
ALL OTHERS  $\bigcirc \frac{1}{4}$  DIA (9 THREADS)  
NOTE: ALL SCREW STAYS SCREWED INTO PLATE AND FITTED WITH NUTS.  
FOR POSITION OF MANHOLES SEE SKETCH

HEATING SURFACE ON TUBES = 1544 Sq. Ft.  
ELSEWHERE = 426 Sq. Ft.  
TOTAL = 2000 Sq. Ft. PER BOILER.

STEAM SPACE = CUB. FT.  
WORKING PRESSURE 180 LBS.  
TEST PRESSURE = 360

NOTE: ALL PLATES STAYS  $\frac{9}{16}$  TO BE OF STEEL SMOKE TUBES OF IRON.  
TENSILE STRENGTH OF SHELL PLATING TO BE NOT LESS THAN 28  $\frac{3}{4}$  TONS PER SQ. INCH.  
ALL HOLES DRILLED IN PLACE AFTER PLATES ARE BENT.

3 THUS CONTRACT 2161



N.E. Marine  
Boiler No 2181  
for

Northumberland S.B. 223

Pressure 180 lbs

Newcastle 25/5/14

Duplicate of ~~Springwell~~ "2136



Michael D. Kydonieus  
for S.S. "BRONZE WINGS"

NEWCASTLE-ON-TYNE

Report No 67318

"Vanassi"  
Rep No 67388



© 2019

Lloyd's Register  
Foundation

W311-0144