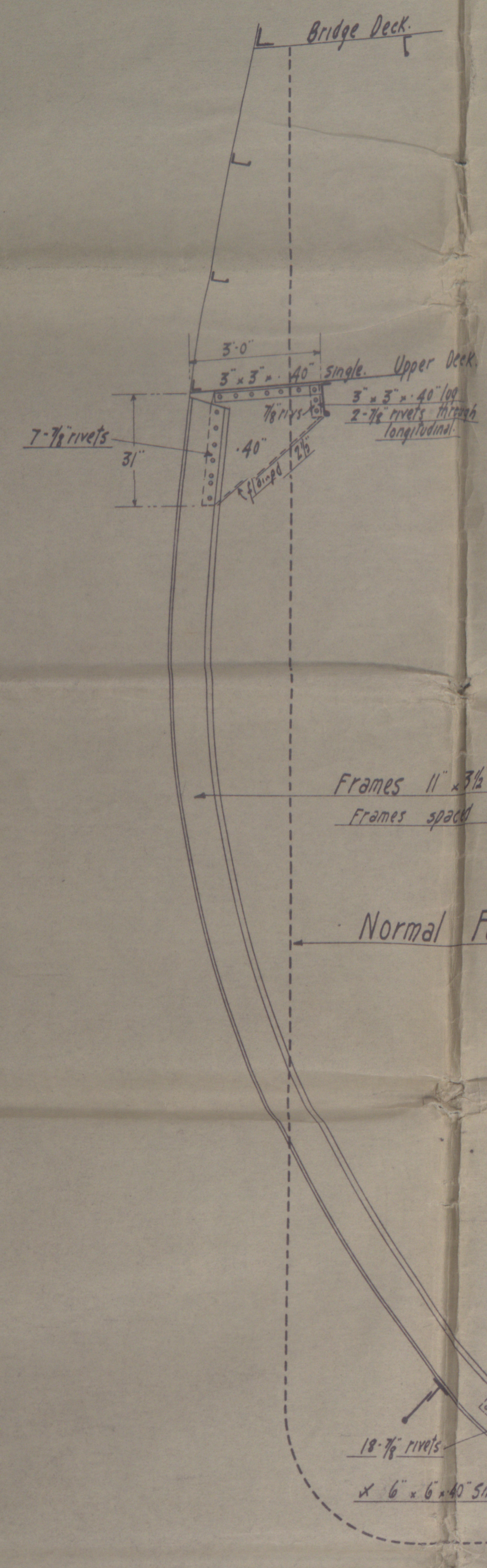


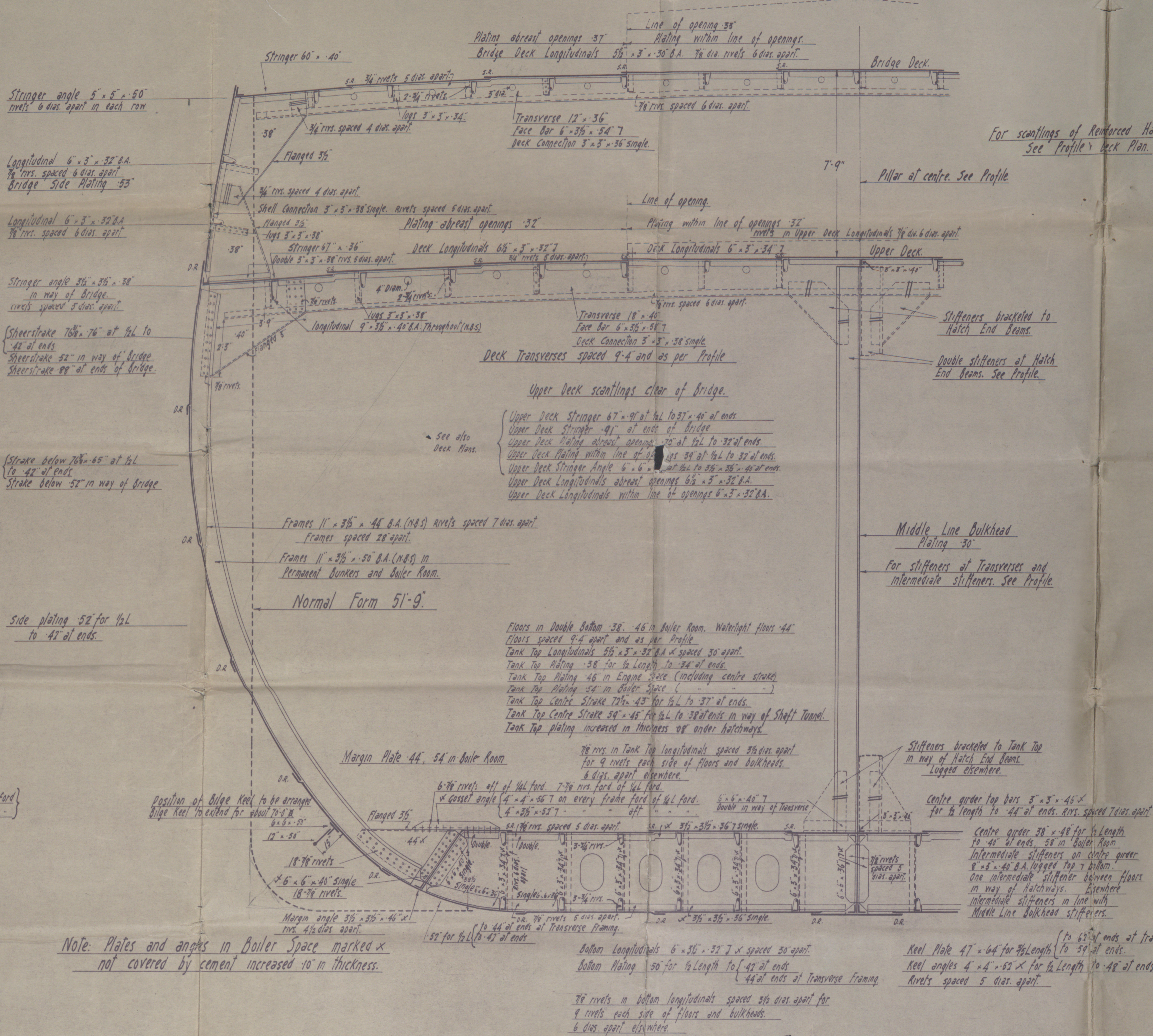
Lloyds Numerals

$L \cdot D = 360 \times 25.75$	= 9270
$L \times (d+D) = 360 \times (51.75 + 25.75)$	= 27900
$\frac{L}{2} \text{ to Upper Deck} = \frac{360}{2} \times 25.75$	= 1398
$\frac{L}{2} \text{ to Bridge Deck} = \frac{360}{2} \times 33.5$	= 1074
Erections	= 818%



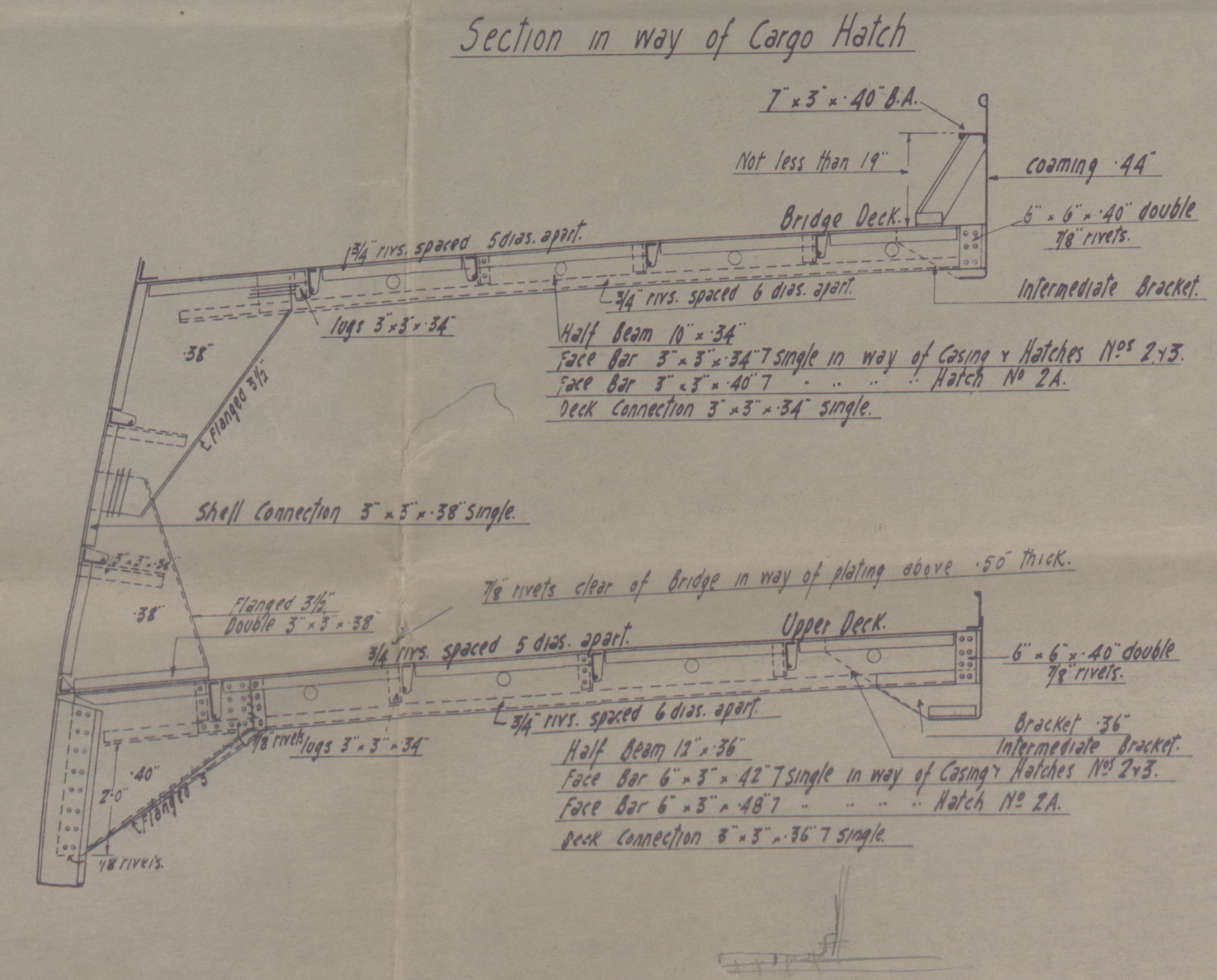
Furness S.B. Co.  
Haverton Mill  
Isk. No 1681. Plan No 995  
8-3-33.

### Intermediate Frame



Notches for longjoints to be well rounded at corners and not rough punched.  
Lightening holes to be not less 8" clear of notches.

For scantlings of Reinforced Hatch End Beam  
See Profile & Deck Plan.



### Riveting of Butts.

Butts of Keel Plate  
 Quadruple riveted overlaps for  $\frac{1}{2}$  Length  
 Treble riveted overlaps at ends  
 Treble riveted overlaps throughout  
 Butts of Bottom Shell  
 Treble riveted overlaps throughout  
 Butts of Side Shell  
 Treble riveted overlaps throughout  
 Strake below Sheerstrake  
 Butts at ends clear of bridge, treble riveted overlaps  
 Butts at ends clear of bridge, Quadruple riveted overlaps where thickness exceeds  $58''$   
 Treble riveted overlaps where thickness does not exceed  $58''$   
 Bridge Side Plating  
 Treble riveted overlaps  
 (including Sheerstrake & Strake below it Upper Deck)  
 Treble riveted overlaps  
 Bridge Deck Stringer  
 Double riveted overlaps  
 Bridge Deck Plating  
 Double riveted overlaps  
 Upper Deck Stringer  
 Double riveted overlaps  
 (on way of bridge)  
 Upper Deck Plating  
 Double riveted overlaps  
 (on way of bridge)  
 Upper Deck Stringer  
 Butts at ends clear of bridge, Quadruple riveted overlaps where thickness exceeds  $68''$   
 Treble riveted overlaps where thickness not exceeding  $58''$  thick  
 Double riveted overlaps where not exceeding  $58''$  thick  
 Upper Deck Plating  
 Butts at ends clear of bridge  
 Quadruple riveted overlaps where thickness exceeds  $58''$   
 Treble riveted overlaps where thickness exceeds  $54''$   
 and does not exceed  $68''$   
 Double riveted overlaps where thickness exceeds  $45''$   
 and does not exceed  $54''$   
 Single riveted overlaps where thickness does not exceed  $45''$   
 Centre Girders  
 Treble riveted overlaps throughout  
 Margin Plate  
 Treble riveted overlaps for  $\frac{1}{2}$  Length  
 To double riveted overlaps at ends  
 Tank Top Centre Strake  
 Treble riveted overlaps for  $\frac{1}{2}$  Length  
 To double riveted overlaps at ends  
 Double riveted overlaps for  $\frac{1}{2}$  Length  
 To single riveted overlaps at ends  
 Tank Top Plating  
 16 rivets in brackets to Bottom & Tank Top Longitudinals  
 Rivets not to exceed 6" close spacing where brackets  
 are increased in length  
 6" rivets each side in bulk of Shell, Tank Top & Deck Longitudinals  
 10" rivets each side in 4" deck longitudinal

Equipment.  
Equipment Numeral.

<u>L x (B x D)</u>	•	360 x (51.75 x 25.75)	•	27,900
<u>Pool</u>	•	33.16 x 7.5 x 7.5	•	186
<u>Bridge</u>	•	23.1 x 7.75 x 7.5	•	1,342
<u>Forticelle</u>	•	30.5 x 7.6 x 7.5	•	171
<u>Deckhouse &amp; Cosings</u>	•	56 x 7.5 x 50	•	210
<u>Solban Deckhouse</u>	•	25.44 x 7.5 x 50	•	96
<u>Equipment Numerals</u>				• 29,905

3 flower anchors stainless collective weight - 160 cwt.  
1 station anchor ex place - 15 cwt.  
270 ft length of 2 1/2" steel low chain cable or larger sized cable of 1 1/8". particulars to be submitted  
90 " 4 1/2" steel wire stream line  
120 " 4 1/2" " handle  
1 of 90 fathoms 2 1/2" " " handle  
2 " 90 " 2 1/2" " " wags.

SHIP N<sup>o</sup> 226.  
MIDSHIP SECTION.

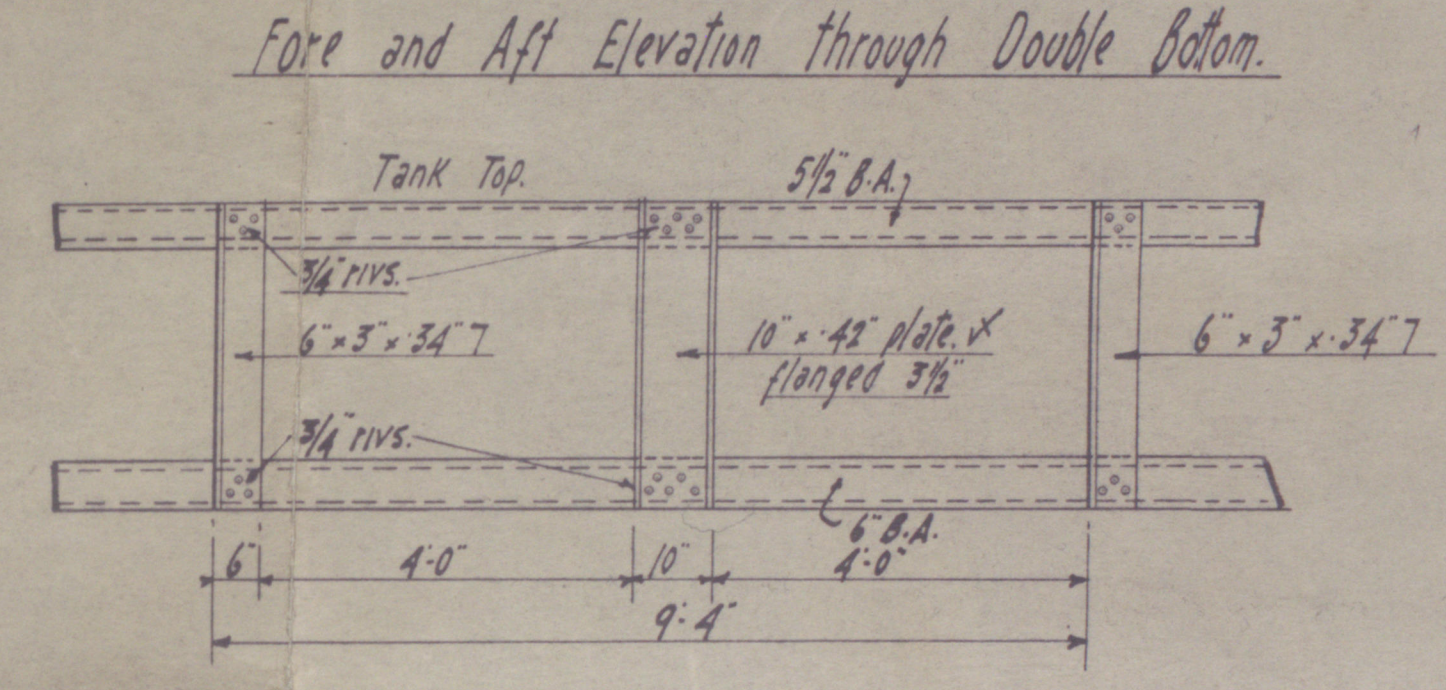
DIMENSIONS: L.B.P 360'-0" x NORMAL BREADTH MOULDED 51'-9" x DEPTH MOULDED 25'-9"  
MAXIMUM BREADTH MOULDED 57'-3"

SCALE  $\frac{1}{2}" = 1 \text{ FOOT}$

TO CLASS LLOYDS + 100.A.I. WITH SPECIAL NOTATIONS:- "LONGITUDINAL FRAMING AT BOTTOM & DECK".  
"ARCFORM."

N.B.S = NEW BRITISH STANDARD SECTIONS.

## ISHERWOOD COMBINATION SYSTEM.





FURNESS S.B. CO'S No 226

MIDSHIP SECTION

S.S. "Arctics" n.n. "English Trader"  
MDB. RPT. No. 15046

W31-0111

ms 226



© 2020

Lloyd's Register  
Foundation