

SURFACES	
TUBES	1090 #
FIREBOX TOP AND SIDES	146 #
BACK	62 #
TUBE PLATE	35 #
FURNACES	105 #
TOTAL HEATING SURFACE	1438 #
GRATE AREA (4" x 9" BARS)	27.5 #
TUBE AREA	9.75 #
WATER	125 #
STEAM SPACE	338 #
GRATE AREA HEATING SURFACE	1:30.28
" " TUBE	1:22.9
" " AREA	4.87:1
" " WATER	1:2.64
" " STEAM SPACE	1:7.12
% BOILER ABOVE FIREBOX	31.4
WEIGHT OF WATER	20 TONS

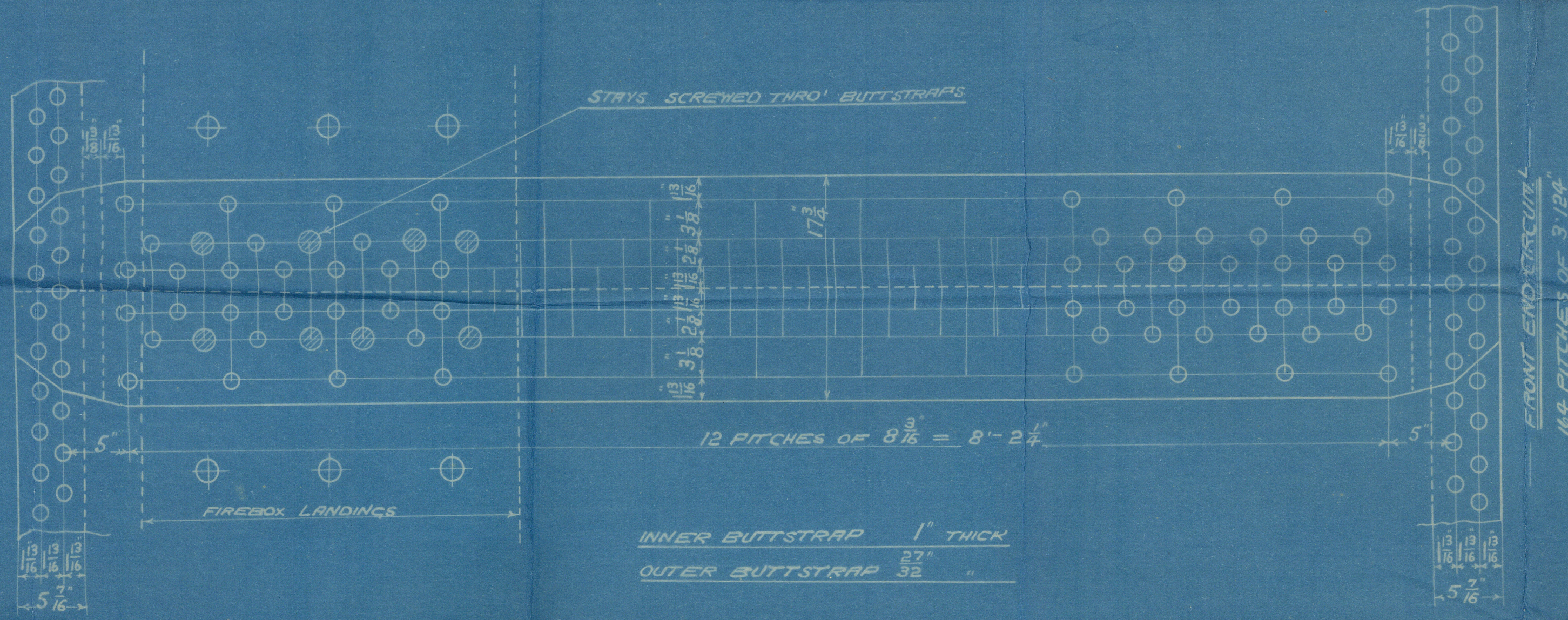
49-5

RIVETING		
	LONG L	END CIRCLES
RIVET HOLE DIA.	1 3/8	1 1/8
PITCH	8 3/8	3.124
% PLATE	85.7	62
% RIVET	92.1	55.2

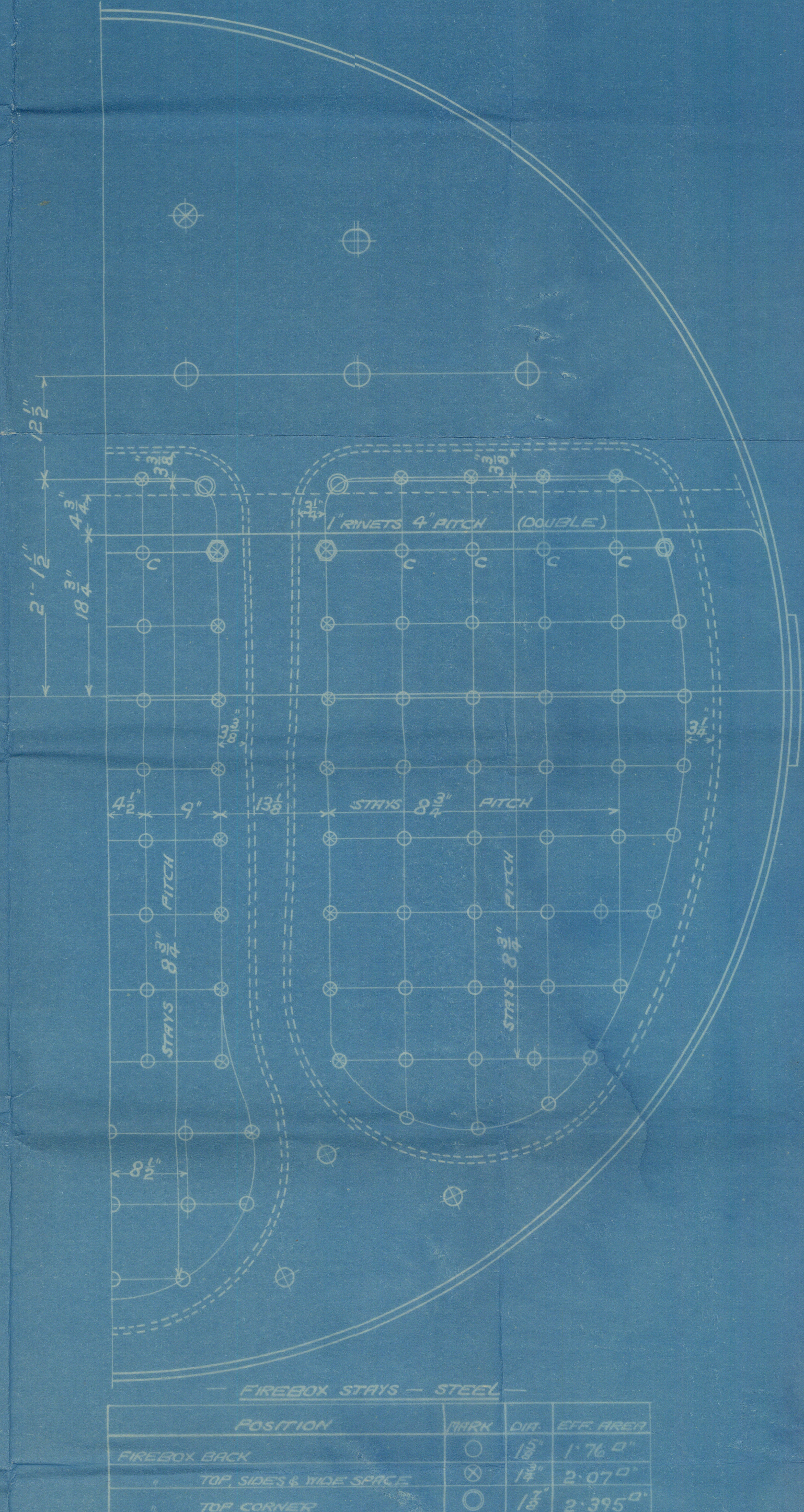
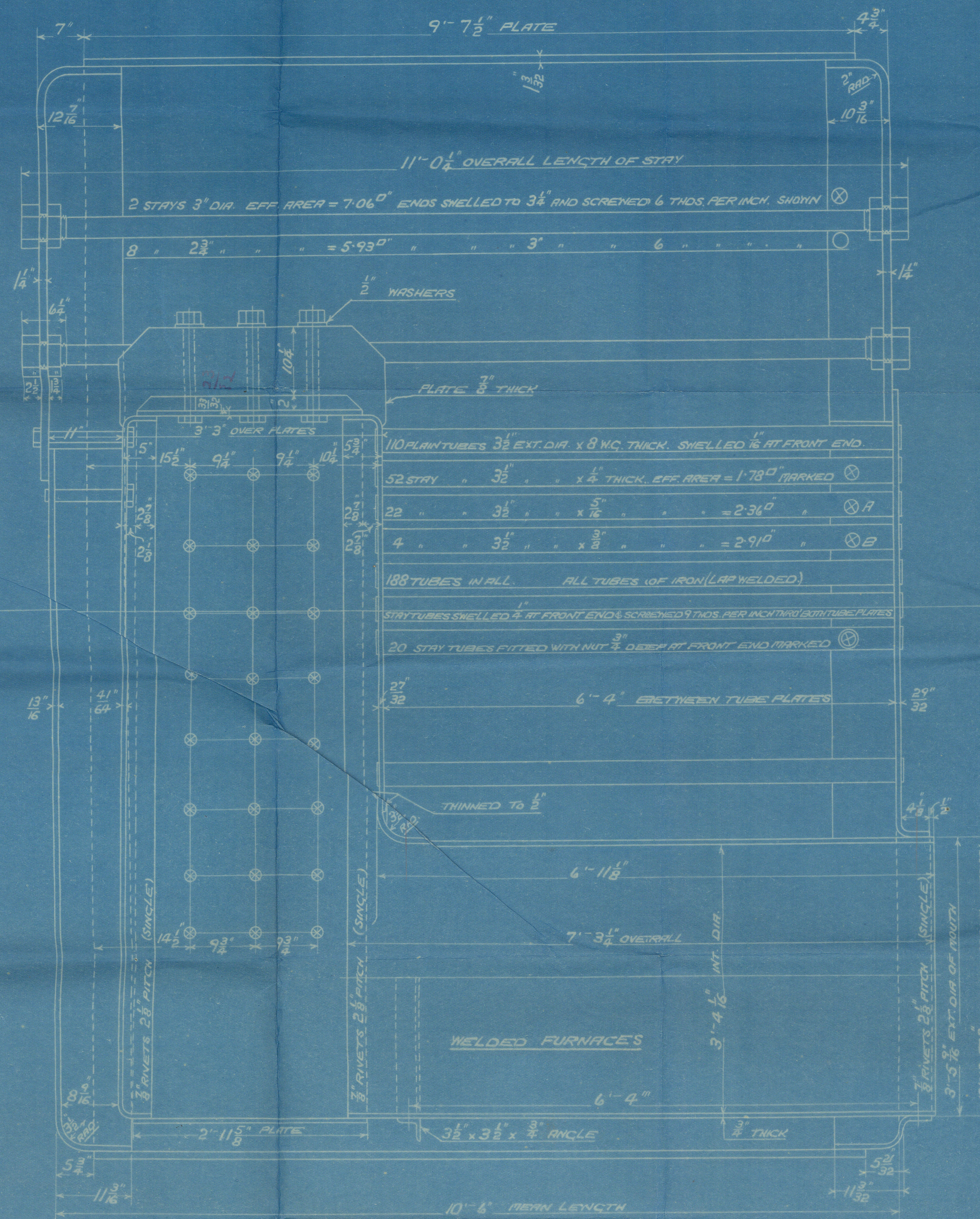
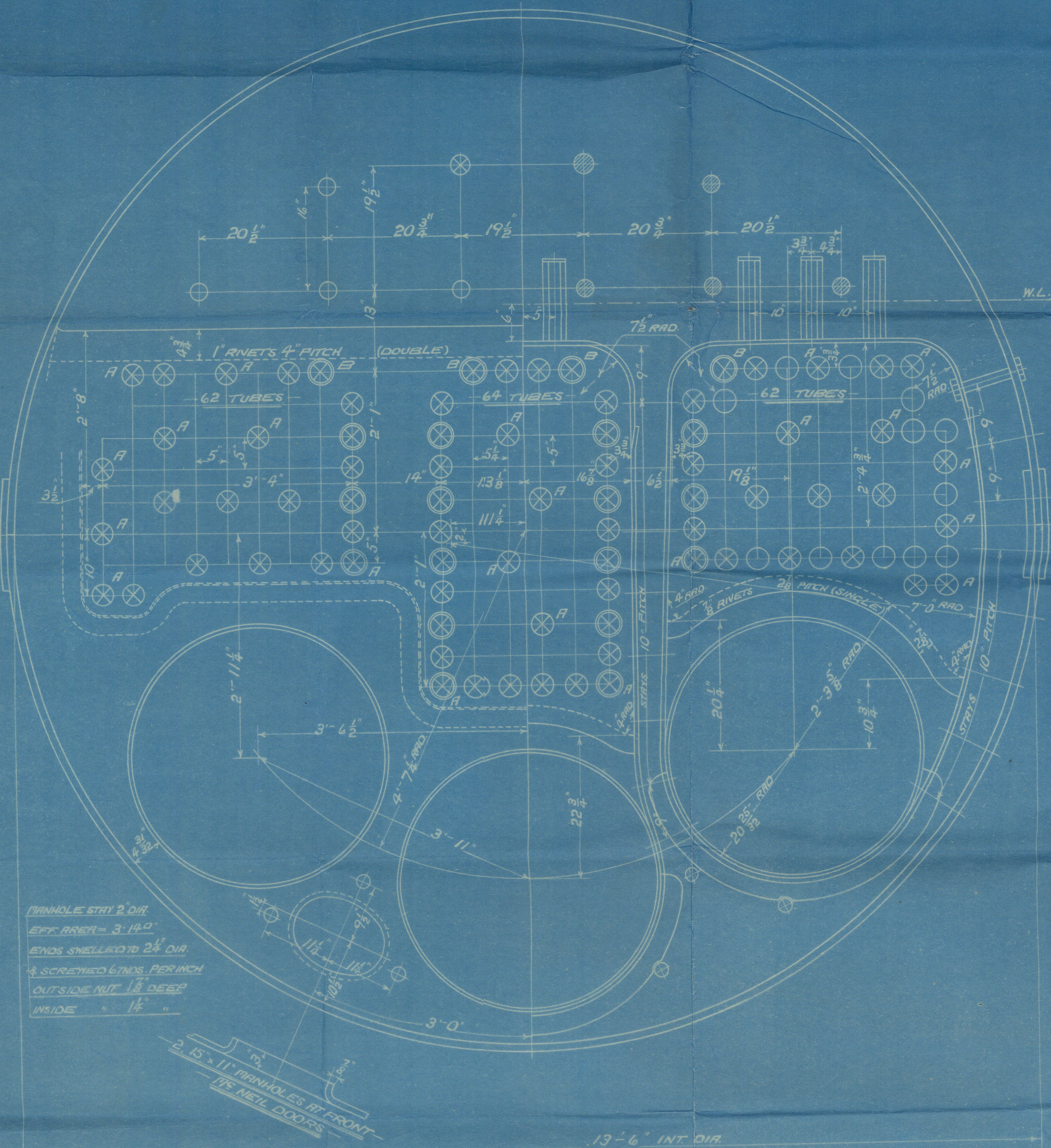
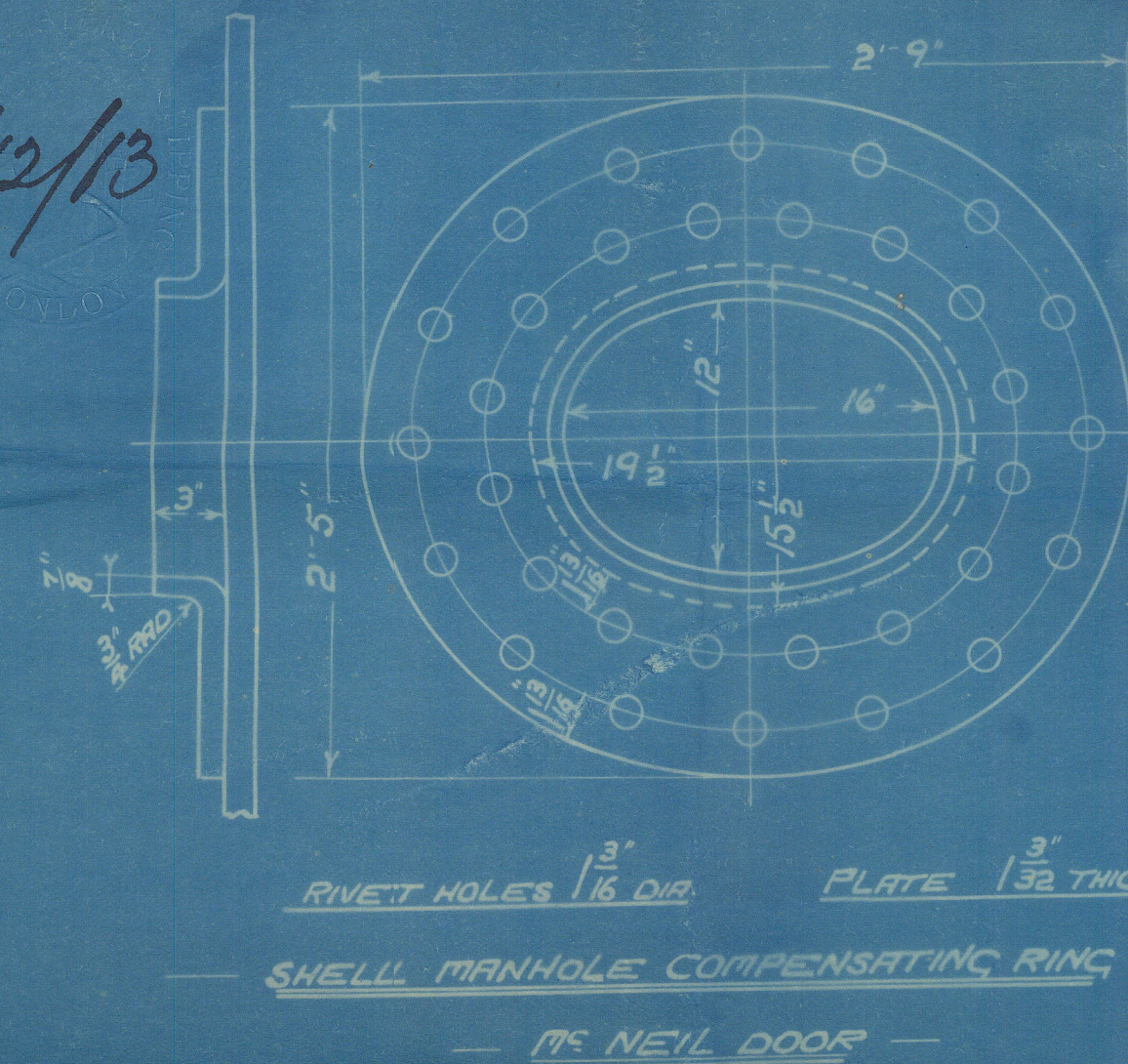
LIMITS OF TENSILE STRENGTH & MATERIAL		
SHELL BUTTSTRAPS	28 TO 32 TONS	SIEMENS MARTIN STEEL
AND CIRDERS		
OTHER PLATES	26 x 30	
FURNACES	26 x 30	
MAIN STAYS	28 x 32	
SCREWED STAYS	26 x 30	
RIVET BARS	26 x 30	

ALL RIVET HOLES DRILLED IN PLACE.
MAIN STAYS SHELLED AT ENDS BY
HYDRAULIC PRESSURE & ANNEALED

BACK END CIRCULAR
164 PITCHES OF 3.124



16/12/13



MAIN BOILER
ONE OFF
B. 210

WORKING PRESSURE = 180 LBS PER SQ. INCH
TO PASS LLOYDS SURVEY
SCALES 1" & 1 1/8" = ONE FOOT

FIREBOX STAYS - STEEL		
POSITION	THICK	EFF. AREA
FIREBOX BACK	1 1/8	1.76 sq"
TOP, SIDES & WIDE SPACE	1 1/8	2.07 sq"
TOP CORNER	1 1/8	2.395 sq"

ALL STAYS SCREWED THRO' BOTH PLATES AND NOT FITTED AT EACH END EXCEPT STAYS IN BACK BOTTOM END MARKED 'C' WHICH PROJECT 3/8 THRO' OUTER PLATE AND ARE CRANKED.
ALL 1 1/8 & 1 1/4 NUTS 1" DEEP EXCEPT ON CORDER TOPS WHERE THE OUTSIDE NUTS ARE 1 1/2" DEEP.
ALL 1 1/8 NUTS 1 1/2" DEEP.

18070
18070

David Rowan

9210

H. Rowan & Co

Boiler No 210


Lidgerwood Engines

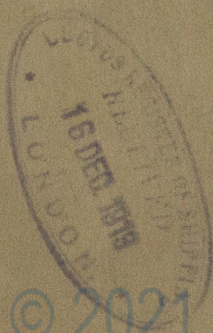
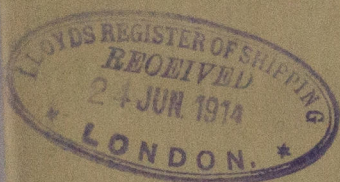
No 423

Dundee S.B. Co

S.S. No 265

GLASGOW REPORT No. 34142

ScK "IMELDA" 



© 2021

Lloyd's Register
W309-0101
Foundation