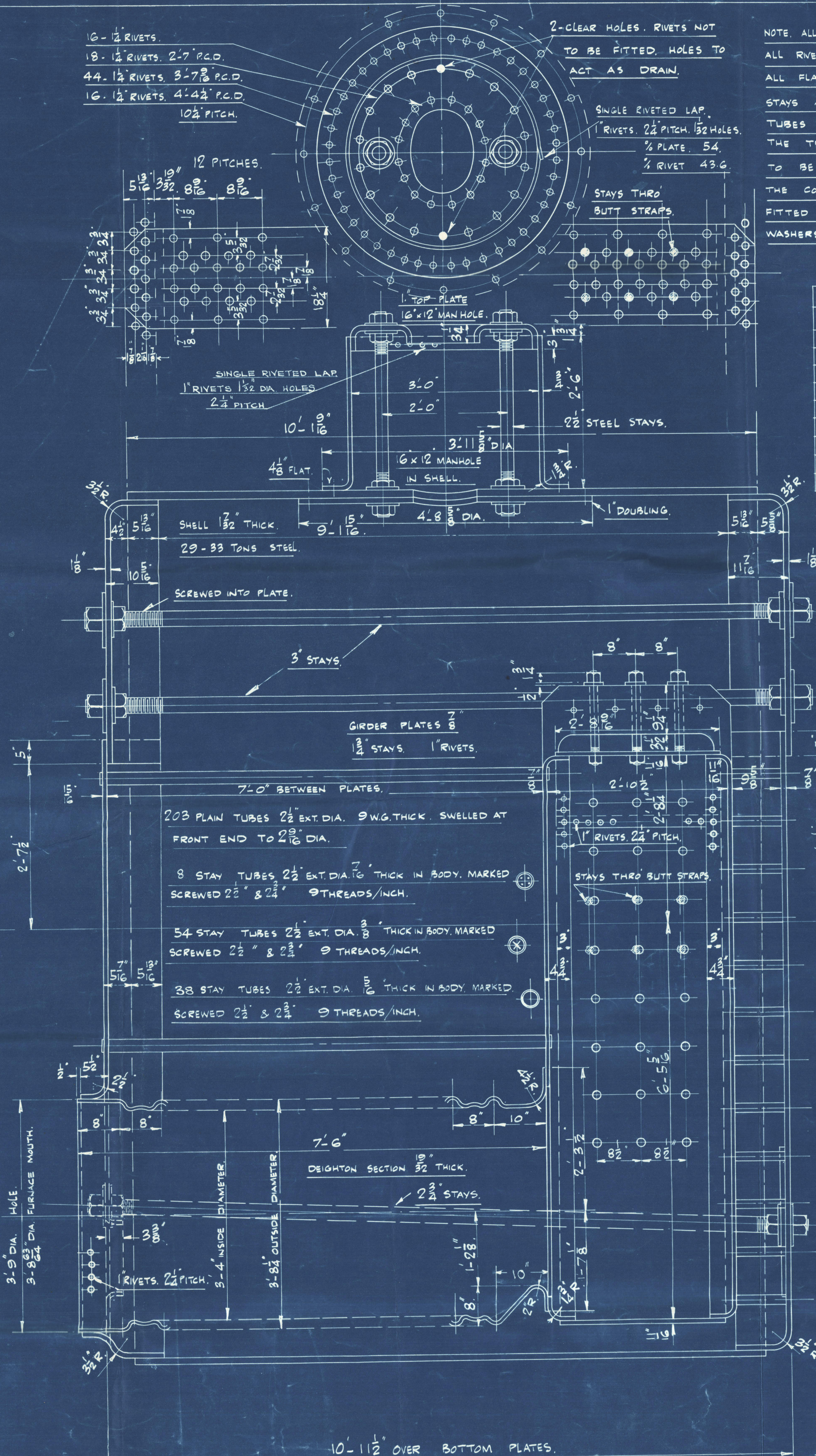
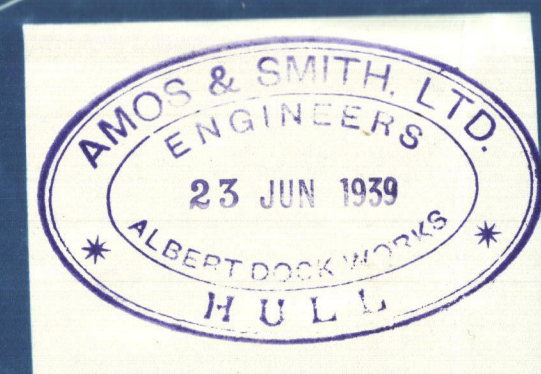
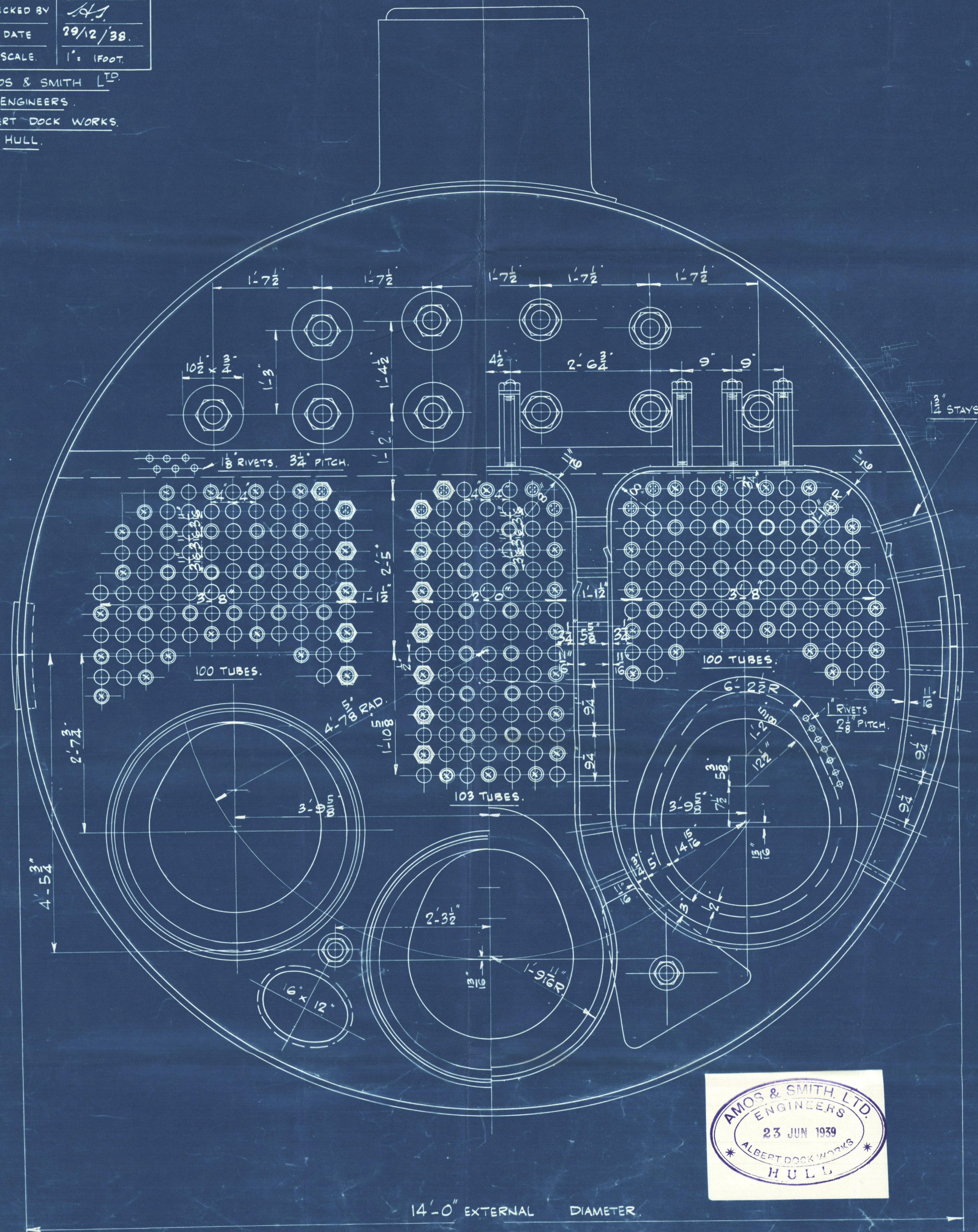


DIAMETER OF BOILER. 14'-0" EXTERNAL.
 LENGTH OF BOILER. 10'-11 1/2" OVER BOTTOM PLATES.
 NUMBER OF TUBES. 303.
 LENGTH OF TUBES. 7'-0" BETWEEN PLATES.
 DIAMETER OF TUBES. 2 1/2".
 HEATING SURFACE IN TUBES. 1388 sq. ft.
 TOTAL HEATING SURFACE. 2000 sq. ft.
 DIAMETER OF SAFETY VALVES. 2 1/2".
 WORKING PRESSURE. 200 LBS./sq. in. LLOYDS.
 OIL FUEL, WALLSEND-HOWDEN HOT AIR
 FORCED DRAUGHT SYSTEM.

CIRCUMFERENTIAL SEAMS 3/4" PITCH.
 1 1/2" RIVETS 1 1/2" HOLES.
 3/4" PLATE 66. 3/4" RIVET 425.
 LONGITUDINAL SEAMS 3/4" PITCH.
 1 1/2" RIVETS 1 1/2" HOLES.
 3/4" PLATE 85.4 3/4" RIVET 875.
 INNER BUTT STRAPS. 1 1/2".
 OUTER BUTT STRAPS. 3/4".

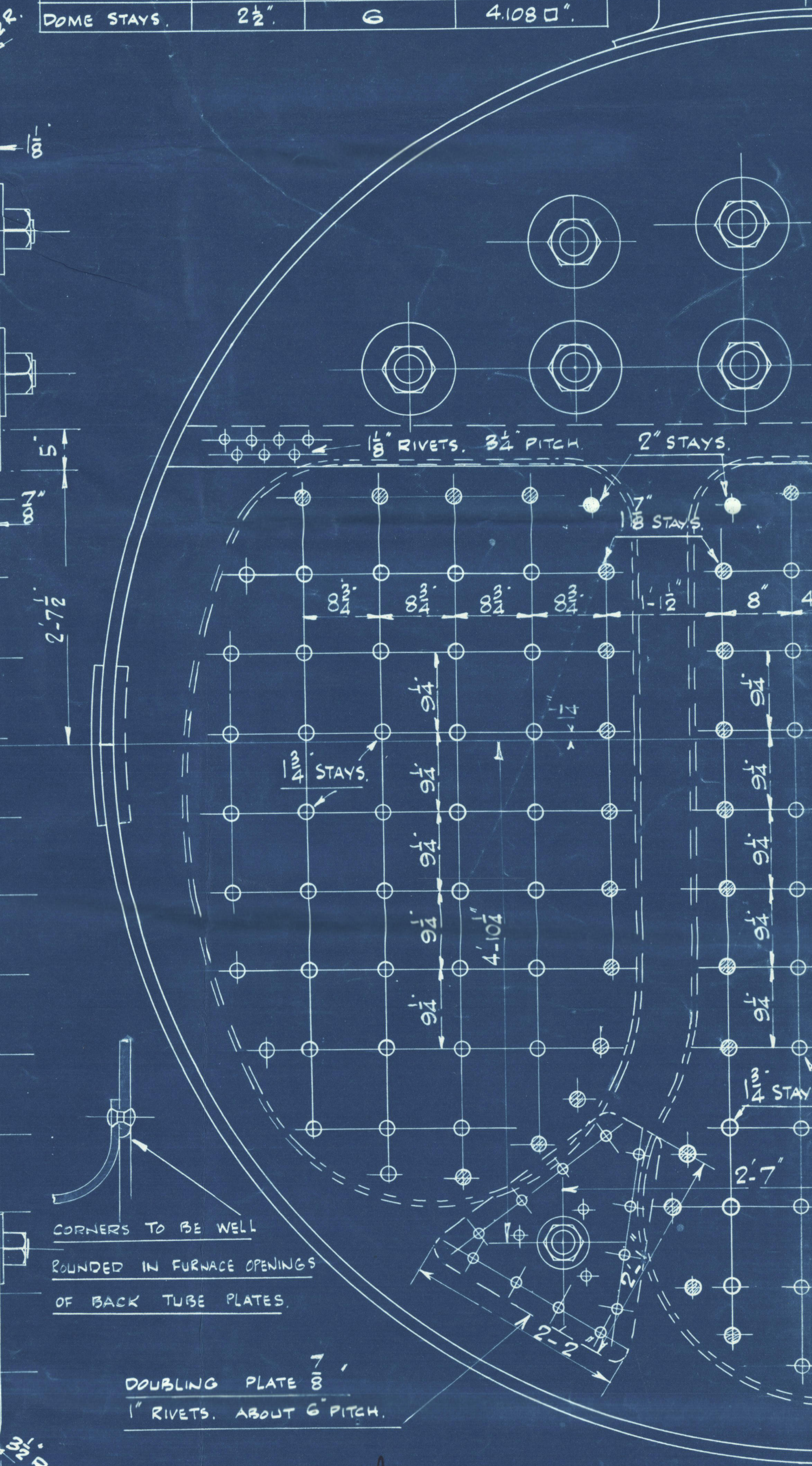
DRAWN BY *AMOS & SMITH LTD.*
 TRACED BY *AMOS & SMITH LTD.*
 CHECKED BY *AMOS & SMITH LTD.*
 DATE 29/12/38.
 SCALE 1" = 1'00".

AMOS & SMITH LTD.
 ENGINEERS.
 ALBERT DOCK WORKS.
 HULL.



NOTE. ALL PLATES, RIVETS & STAYS OF STEEL BY THE SIEMENS MARTIN PROCESS.
 ALL RIVET HOLES, DRILLED THROUGHOUT THE BOILER, THOSE IN SHELL AFTER THE PLATES ARE BENT.
 ALL FLANGED PLATES TO BE ANNEALED AFTER FLANGING.
 STAYS ARE NOT TO BE WELDED.
 TUBES ARE OF IRON.
 THE TENSILE STRENGTH OF THE SHELL PLATES, BUTT STRAPS & GIRDER PLATES
 TO BE BETWEEN 29 & 33 TONS/sq. in.
 THE COMBUSTION CHAMBER STAYS ARE SCREWED INTO BOTH PLATES &
 FITTED WITH A NUT AT EACH END.
 WASHERS ON OUTSIDE OF SHELL ONLY, NONE INSIDE C.C.

	DIA.	THDS/INCH.	EFFECTIVE AREA AT BOTTOM OF THD.
STEAM SPACE STAYS.	3"	6	6.1 sq. in.
BOTT. STAYS.	2 1/2"	6	5.05 sq. in.
C.C. STAYS.	2"	9	2.71 sq. in.
C.C. STAYS.	1 1/2"	9	2.36 sq. in.
C.C. STAYS.	1 1/4"	9	2.03 sq. in.
STAY TUBES (1 1/2")	2 1/2"	9	2.39 sq. in.
STAY TUBES (1 1/4")	2 1/2"	9	1.9605 sq. in.
STAY TUBES (1 1/2")	2 1/2"	9	1.6046 sq. in.
DOME STAYS.	2 1/2"	6	4.108 sq. in.



CARE TO BE TAKEN THAT STAYS AT THE BACK END
 ARE KEPT SUFFICIENTLY CLEAR OF THE ROUND THAT FULL
 NUTS CAN BE GOT UPON THE FLAT PLATE.

From AMOS & SMITH, Ltd., HULL

ENCLOSURE FOR

*Lloyds Register
of Shipping*

TOTAL HEATING SURFACE.

14'-0" EXTERNAL.

DIAMETER OF SAFETY VALVES.

10'-11 $\frac{1}{2}$ " OVER BOTTOM PLATES.

WORKING PRESSURE.

303.

OIL FUEL, WALLSEND-HOWDEN HOT AIR

7'-0" BETWEEN PLATES.

FORCED DRAUGHT SYSTEM.

2 $\frac{1}{2}$ ".1388 ϕ .2000 ϕ .2 $\frac{3}{4}$ ".200 LBS/ \square " LLOYDS.CIRCUMFERENTIAL SEAMS 3 $\frac{3}{4}$ " PITCH.1 $\frac{7}{32}$ " RIVETS 1 $\frac{1}{4}$ " HOLES

% PLATE 66. % RIVET 42.5.

LONGITUDINAL SEAMS 8 $\frac{2}{16}$ " PITCH.1 $\frac{7}{32}$ " RIVETS 1 $\frac{1}{4}$ " HOLES

% PLATE 85.4 % RIVET 87.5.

INNER BUTT STRAPS. 1 $\frac{1}{32}$ ".OUTER BUTT STRAPS. 3 $\frac{1}{32}$ ".

DRAWN BY	<i>A.S.</i>
TRACED BY	
CHECKED BY	<i>A.S.</i>
DATE	29/12/38.
SCALE	1" = 1 FOOT.

AMOS & SMITH LTD.

ENGINEERS.

ALBERT DOCK WORKS.

HULL.



© 2020

Lloyd's Register
Foundation

HULL

Amos & Smith Ld

Bldr 672

Wkg pressure 200 lbs sq

Duplicate of Mr 667

approved 12th 1.39

S.S. K. "Gwate"

HULL REPORT NO. 50477.



© 2020

Lloyd's Register
Foundation

W300-0242