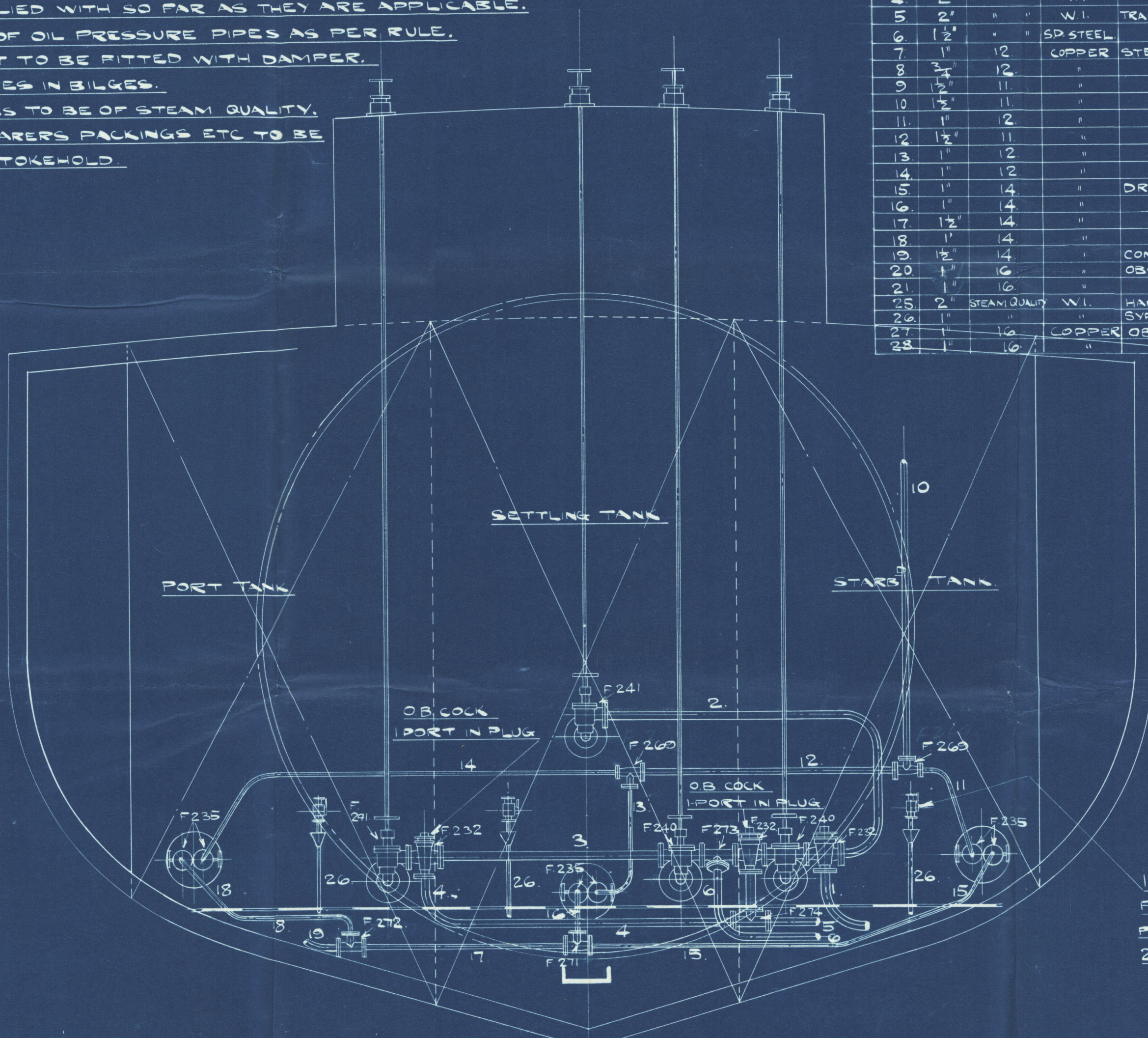
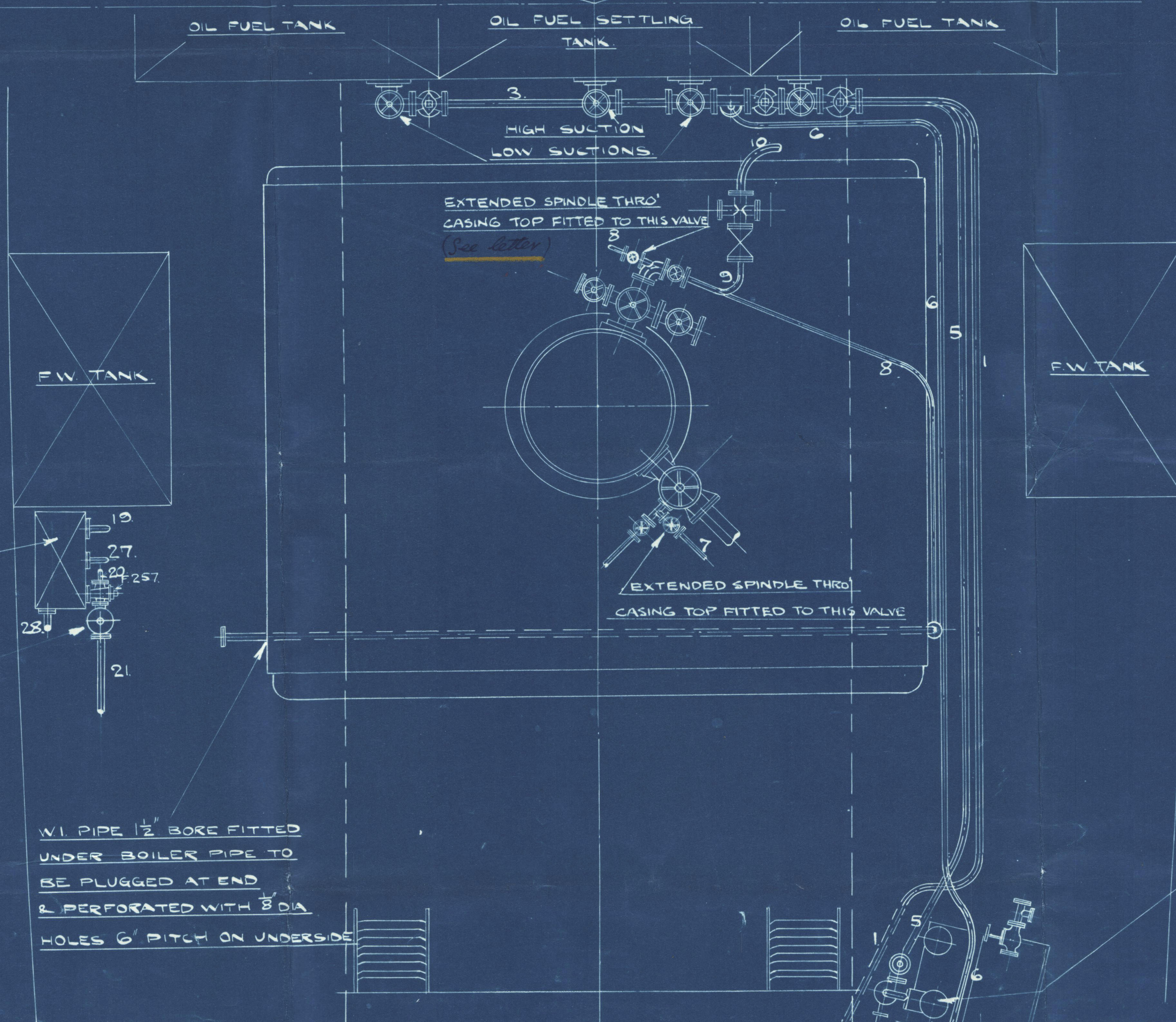


THE FLASH POINT OF THE OIL TO BE ABOVE 150°F. *See Steel Tankers*
 THE REQUIREMENTS OF SECTION 20 LLOYDS RULES 1938-39.
 TO BE COMPLIED WITH SO FAR AS THEY ARE APPLICABLE.
 THICKNESS OF OIL PRESSURE PIPES AS PER RULE.
 FUNNEL NOT TO BE FITTED WITH DAMPER.
 NO LEAD PIPES IN BILGES.
 ALL W.I. PIPES TO BE OF STEAM QUALITY.
 NO WOOD BEARERS PACKINGS ETC TO BE
 FITTED IN STROKEHOLD.

Nº	BORE	THICKNESS	MATE	DESCRIPTION
1.	2"		STEAM QUALITY W.I.	OIL FUEL PP. SUCTION FROM COCK
2	2"		" " W.I.	CENTRE HIGH LEVEL SUCTION
3	2"		" " W.I.	CONNECTING PIPE
4	2"		" " W.I.	" "
5	2"		" " W.I.	TRANSFER PP. SUCT. FROM PORT OR STARB. TANK.
6	1 1/2"		" " SD STEEL	" " DELY. TO SETTLING TANK.
7	1"	12	" " COPPER	STEAM TO OIL FUEL INSTALLATION.
8	2 1/2"	12	" " "	" " FIRE EXTINGUISHING PIPE
9	1 1/2"	11	" " "	" " REDUCING VALVE.
10	1 1/2"	11	" " "	" " HEATING COILS
11	1"	12	" " "	" " " (STARB.)
12	1 1/2"	11	" " "	" " " (PORT & CENTRE)
13	1"	12	" " "	" " " (CENTRE)
14	1"	12	" " "	" " " (PORT)
15	1"	14	" " "	DRAIN FROM HEATING COILS (STARB.)
16	1"	14	" " "	" " " (CENTRE)
17	1 1/2"	14	" " "	" " " (STARB. & CENTRE)
18	1"	14	" " "	" " " (PORT)
19	1 1/2"	14	" " "	COMBINED DRAINS TO OBSERVATION TANK.
20	1"	16	" " "	OBSERVATION TANK DRAIN TO BILGE.
21	1"	16	" " "	" " " HOTWELL
25	2"		STEAM QUALITY W.I.	HAND DUMP SUCTION & ELECTRIC PP. SUCT.
26	1"		" " "	SYPHON COCKS DRAIN TO OIL WELL.
27	1"	16	" " "	COPPER OBSERVATION TANK OVERFLOW TO BILGE
28	1"	16	" " "	" " " VAPOUR PIPE



1" SYPHON COCKS SELF CLOSING TYPE
 FITTED TO EACH TANK INTERNAL
 PIPES TO BE FITTED & LED TO
 2" FROM TANK BOTTOM.



FOR FURTHER DETAILS SEE
 WALLSEND HOWDEN DRG.
 Nº OK 3542.

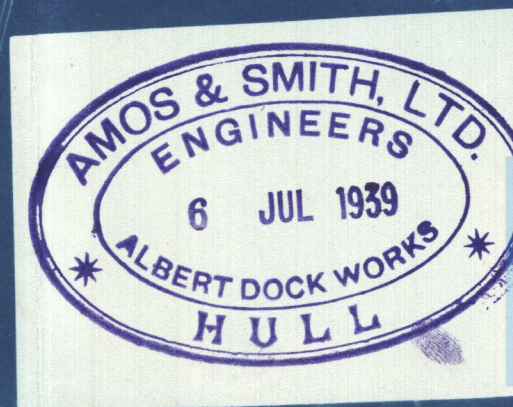
THIS PUMP MAY BE USED
 AS A TRANSFER PUMP

OIL FUEL ARR

ENG No 667-672

13490.

W300-0239



DRAWN BY	
TRACED BY	DJ
CHECKED BY	
DATE	1/5/39
SCALE	1/2" = 1 FOOT.

71° 672
HULL

Amos & Smith, Ltd., Hull.

Engine No. 672

Gil Fuel Arrangement

APPROVED

18. K. "Iwate"

HULL REPORT No. 50477.



© 2020

Lloyd's Register
Foundation
W300 0239