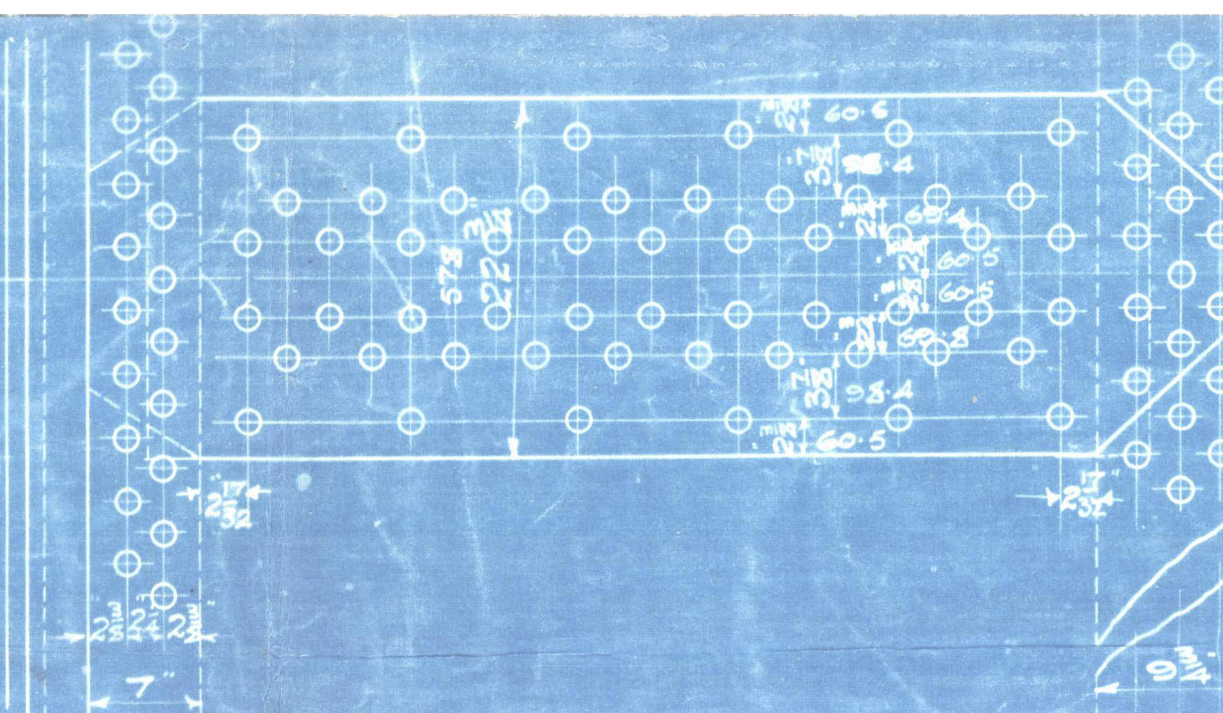


| HEATING SURFACE | |
|----------------------|---------|
| TUBES | |
| CHAMBERS | |
| FURNACES | |
| FRONT TUBE PLATE | 50 4 |
| TOTAL FOR ONE BOILER | |
| TOTAL FOR 3 BOILERS | 10450 @ |

30.00
 LONGITUDINAL SEAMS $1\frac{1}{2}$ RIVET HOLES $1\frac{1}{2}$ RIVETS $10\frac{1}{2}$ PITCH
 30.00
 CIRCULAR SEAMS $1\frac{1}{2}$ RIVET HOLES $1\frac{1}{2}$ RIVETS
 30.43
 END SEAMS $3\frac{1}{2}$ PITCH CENTRE SEAM $4\frac{1}{2}$ PITCH
 32.00
 INNER BUTTS $1\frac{1}{2}$ THICK
 30.00
 OUTER BUTTS $1\frac{1}{2}$ THICK

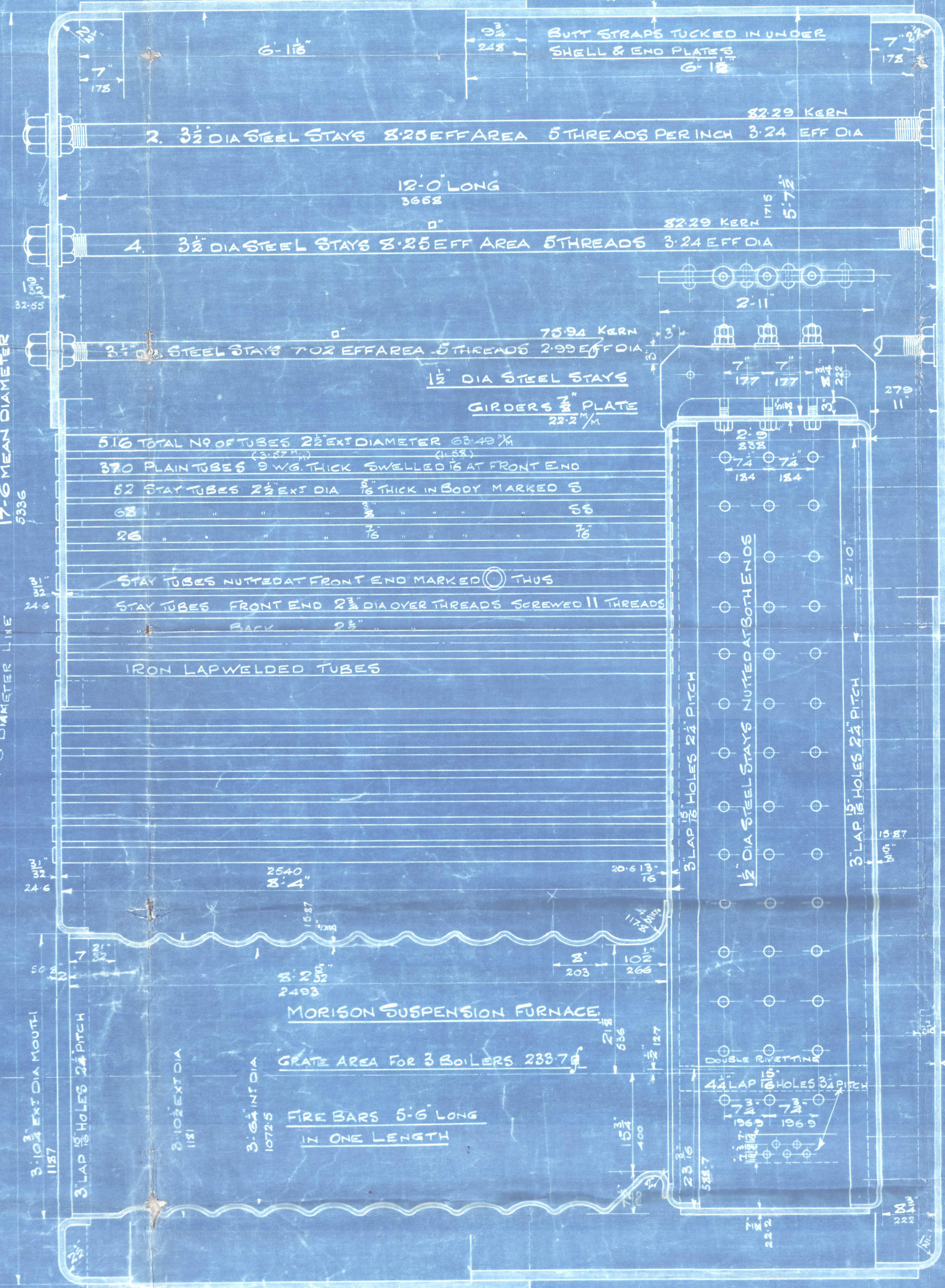
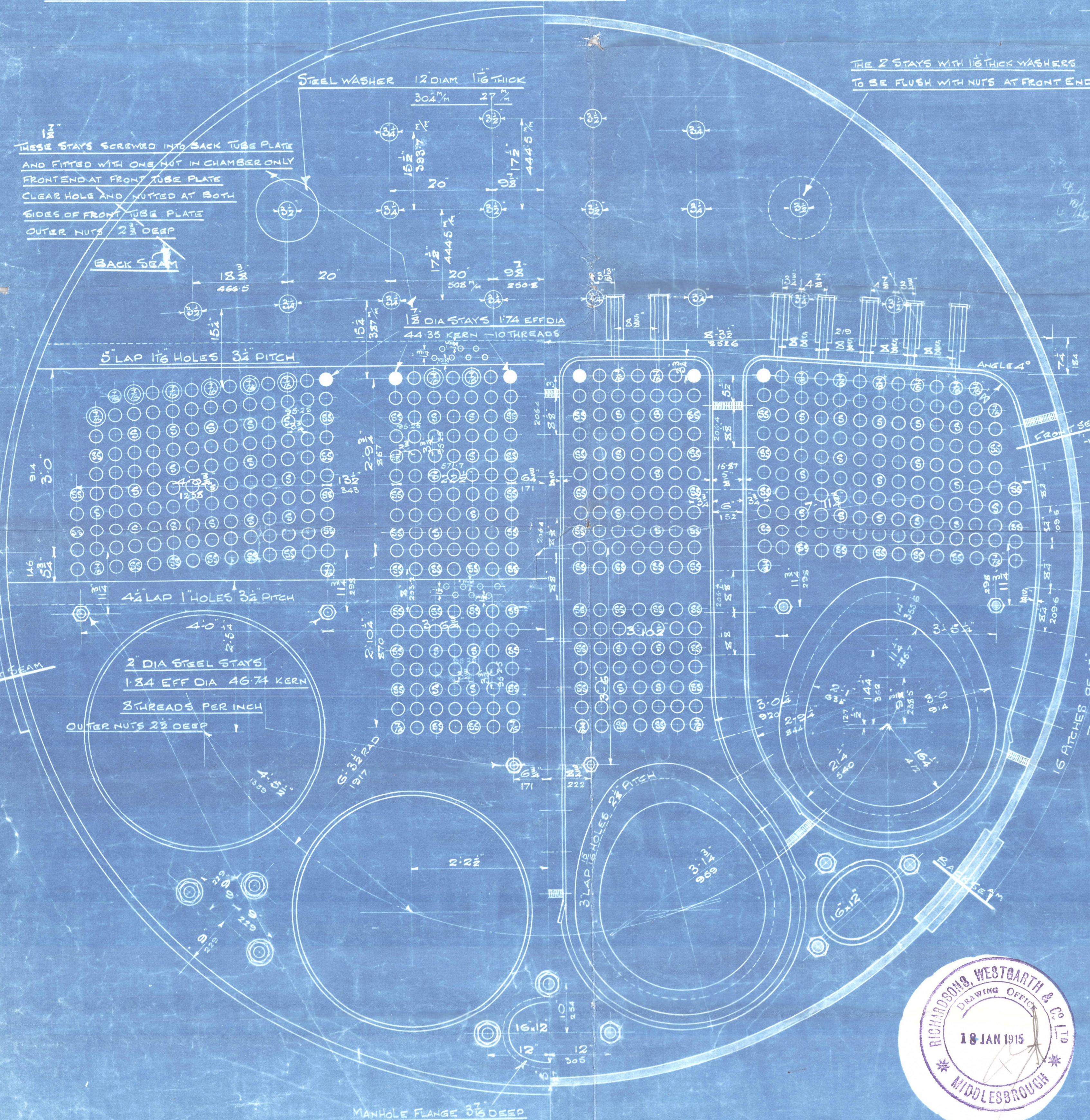
TEST MARKS TO BE VISIBLE WHEN COMPLETED

| | | | | | | | | | | | | |
|---|---|---|---|---|----------|---|---|---|-----|---|---|--------|
| CENTRE CIRCULAR RIVETTING TAKEN ON 17.6 DIAMETER PITCH LINE 146 PITCHES OF 4 1/2" | | | | | | | | | | | | |
| FRONTEND | " | " | " | " | 17.6 | " | " | " | 170 | " | " | 3 1/2" |
| BACK | " | " | " | " | 17.2 1/2 | " | " | " | 168 | " | " | 3 1/2" |



SEE DETAIL DRAWING N° 6767
FOR POSITION OF MANHOLES & LIFTER LUGS

MANHOLE RING 1⁹/₁₆" THICK 39.69
1⁴⁵/₁₆" 40.8
1⁹/₁₆" RIVET HOLES 1⁹/₁₆" RIVETS 39.69



FOR 180 LBS WORKING PRESSURE 1265 KILOGS PER SQ CM

TENSILE STRENGTH OF SHELLS, BUTTS & MANHOLE RING 28³ TO 32 TONS 45.27 TO 50.89 KILOGS PER SQ CM

BOILERS ^{3 BOILERS} ~~NM2232~~ ^{3 BOILERS} M 2240

STAYS IN CHAMBER BACKS.

| | | | | | |
|---------|---|----------------------|---------------|--------------------|-----------|
| 38.10 % | ⊕ | 12 DIA STEEL STAYING | 2° EFF AREA | NOTED AT BOTH ENDS | 34.82 KSR |
| 44.44 % | ⊕ | 12 " " " | 20° EFF AREA | " " " " | 41.17 " " |
| 60.73 % | ⊕ | 2 " " " | 275° EFF AREA | " " " " | 4752 " " |

Richardsons, Westgarth & Co. Ltd.
Main Boilers

Nº M 2240

for

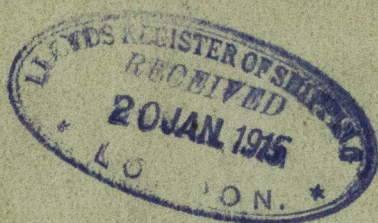
Sir Raylton Nixon & Co.

SS Nº 590



80 W. W. P.

R.W. H. 2240



| |
|--------------|
| No. 5447 |
| LLOYD'S TEST |
| 360 lbs. |
| 26.1.15 J.K. |

Elstree
Grange

ex sps. Abadesa

Indb. Rpt. No 9274.

W30-0118



© 2020

Lloyd's Register
Foundation