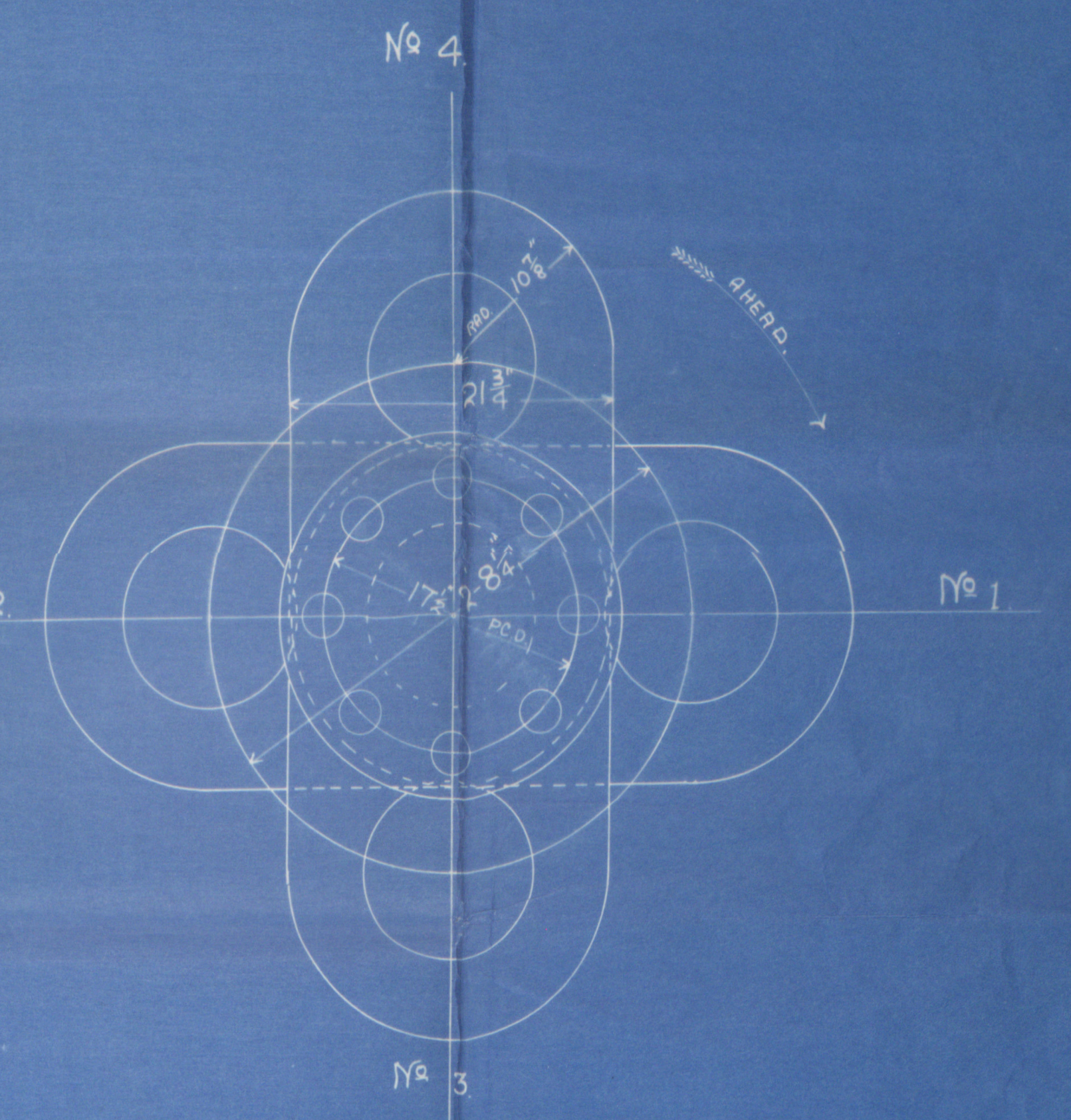
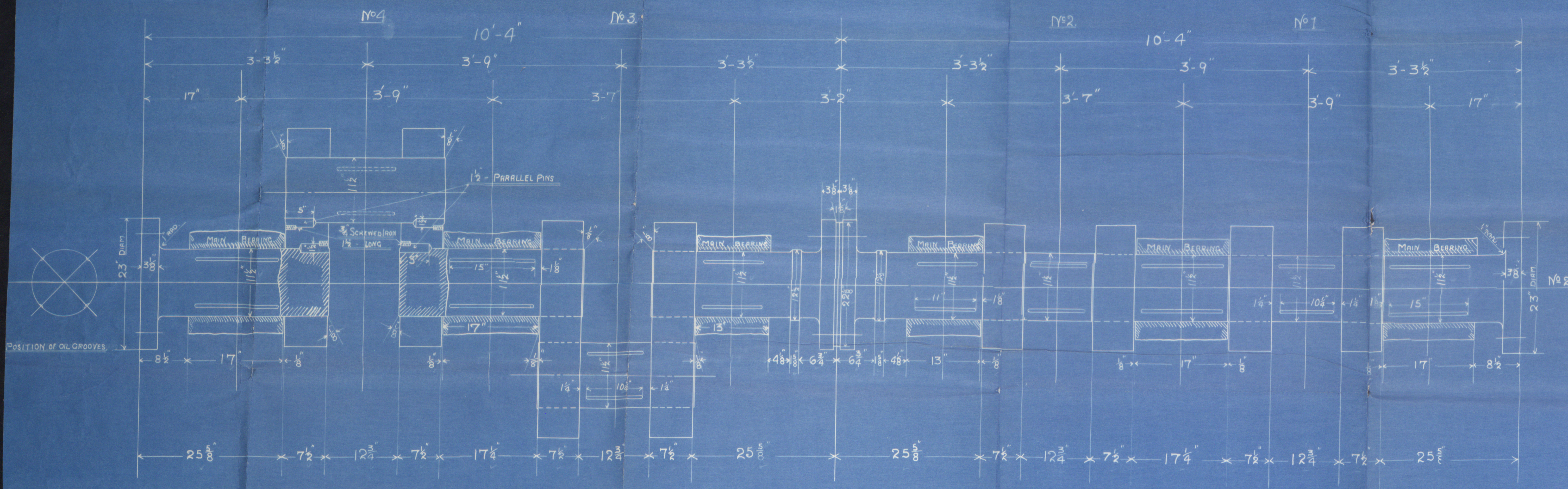
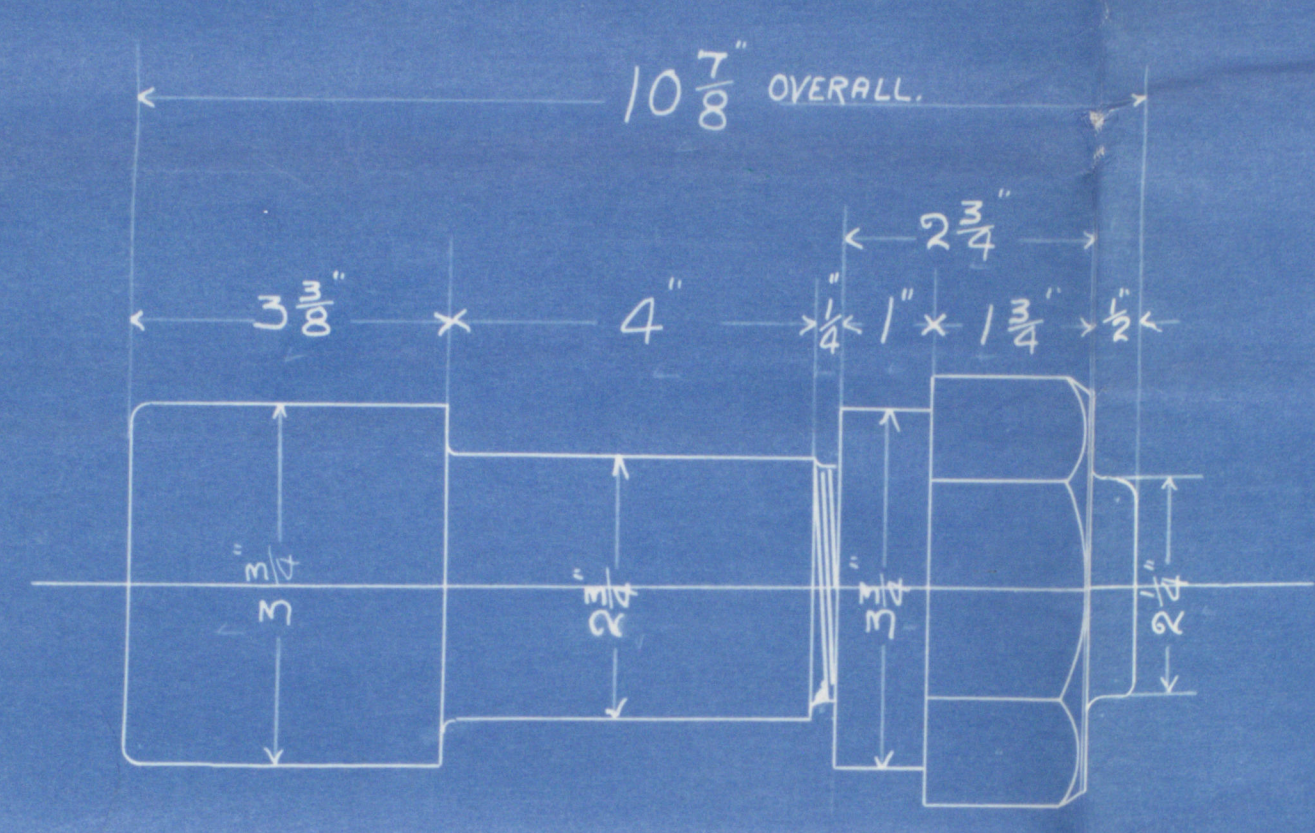
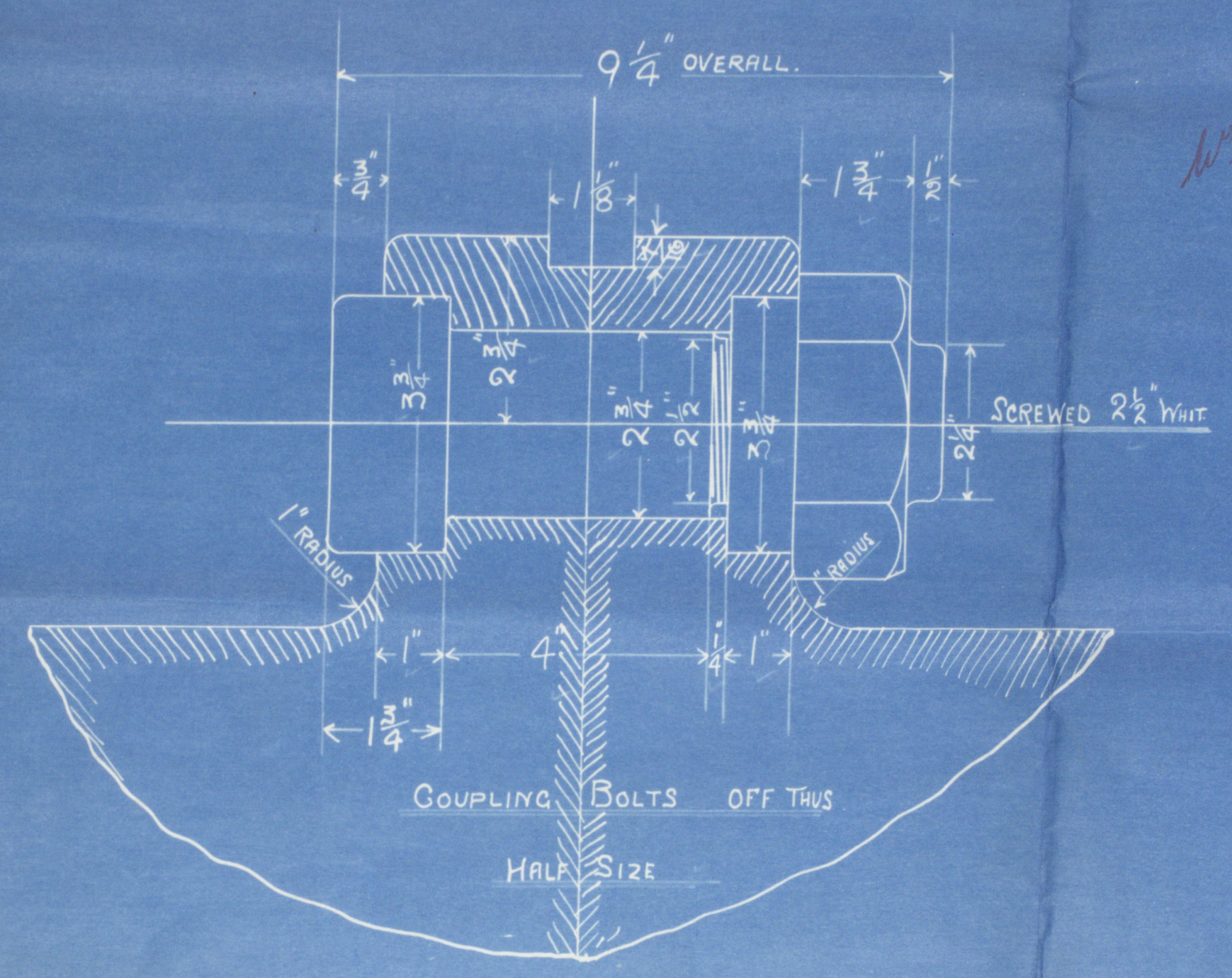
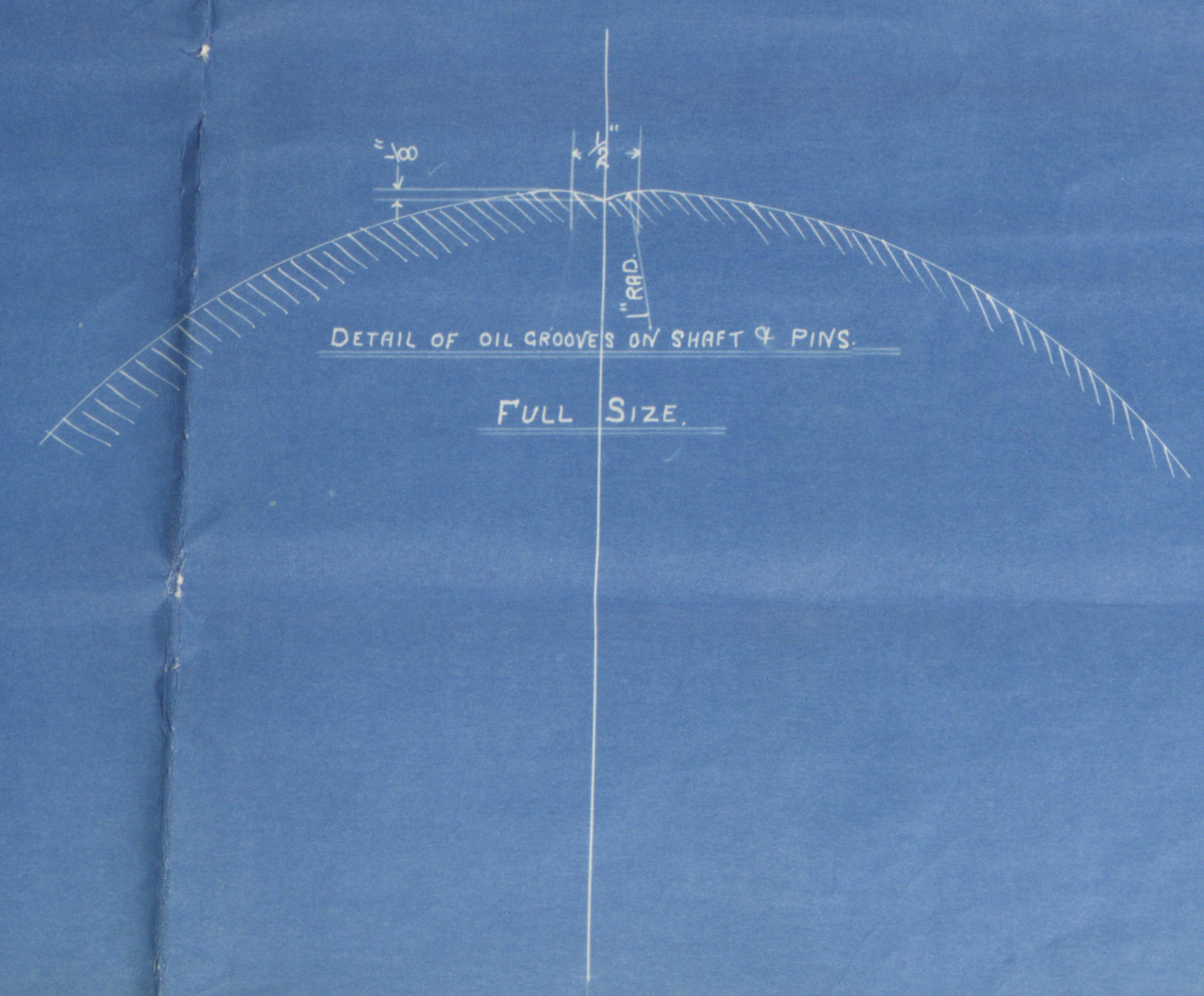


14/11/11



LOOKING FORWARD.



APR 13/11/11

# CRANK SHAFT ENC NO 418

SCALES 1/2" = 1 FOOT  
HALF SIZE & FULL SIZE.

5513



W297-0297 2/2

*From*

The CLYDE SHIPBUILDING AND ENGINEERING CO., Ltd.,

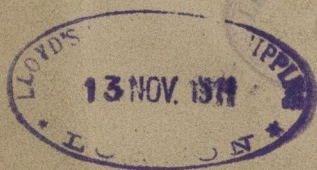
For ENCLOSURE to

*Messrs Lloyds Registry  
Greenock*

Badger State  
Plan of Crank Shaft-  
for

Niceall Hughes h.<sup>419</sup>~~418~~  
for

Clyde Iron Works Coy. h.<sup>29841</sup>



Oil  
Motors.  $\frac{1}{8}$  "Londonian"

Greenock Report N<sup>o</sup> 16329.

"h. "Badger State"



© 2019

Lloyd's Register  
Foundation