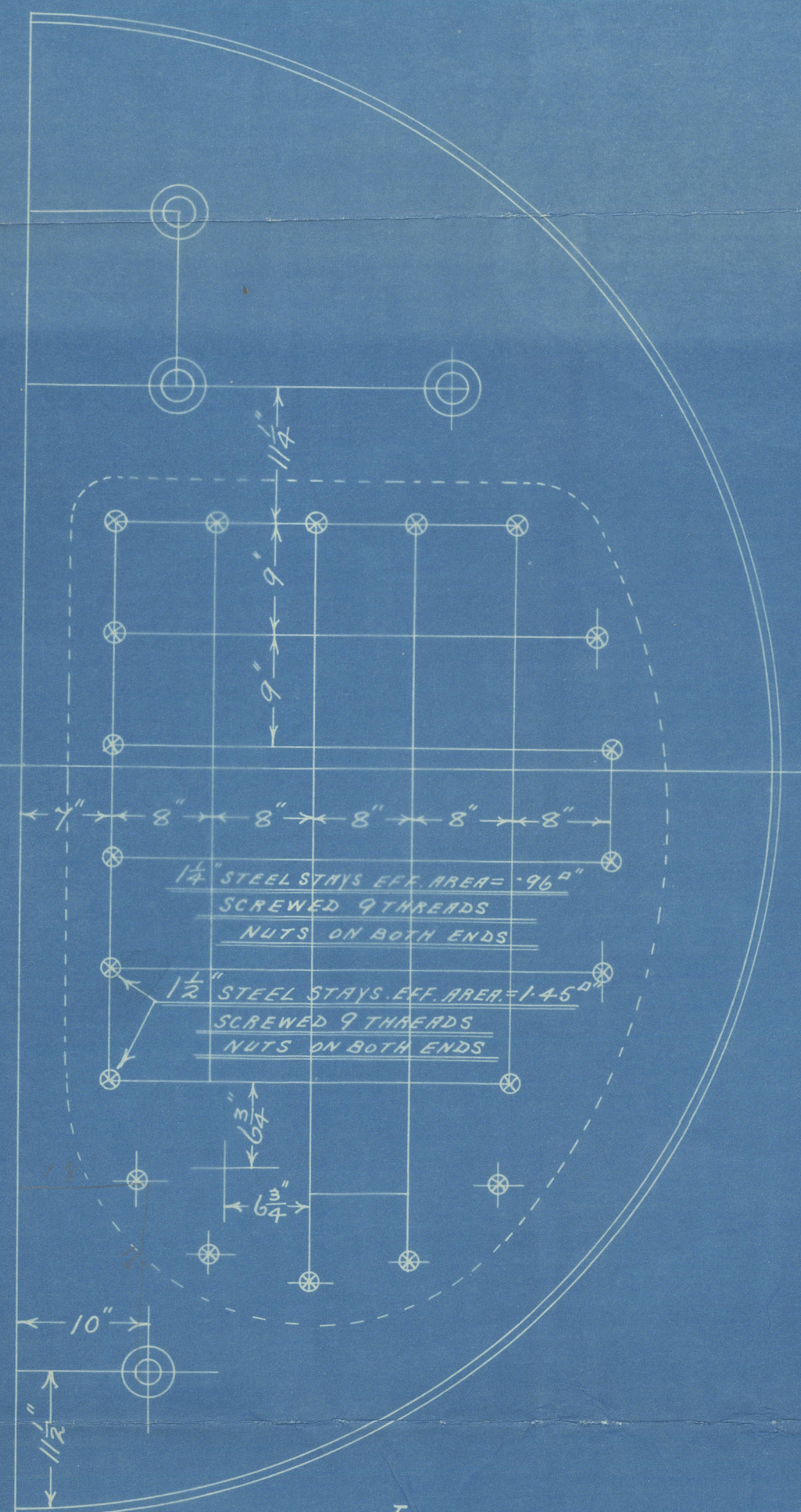
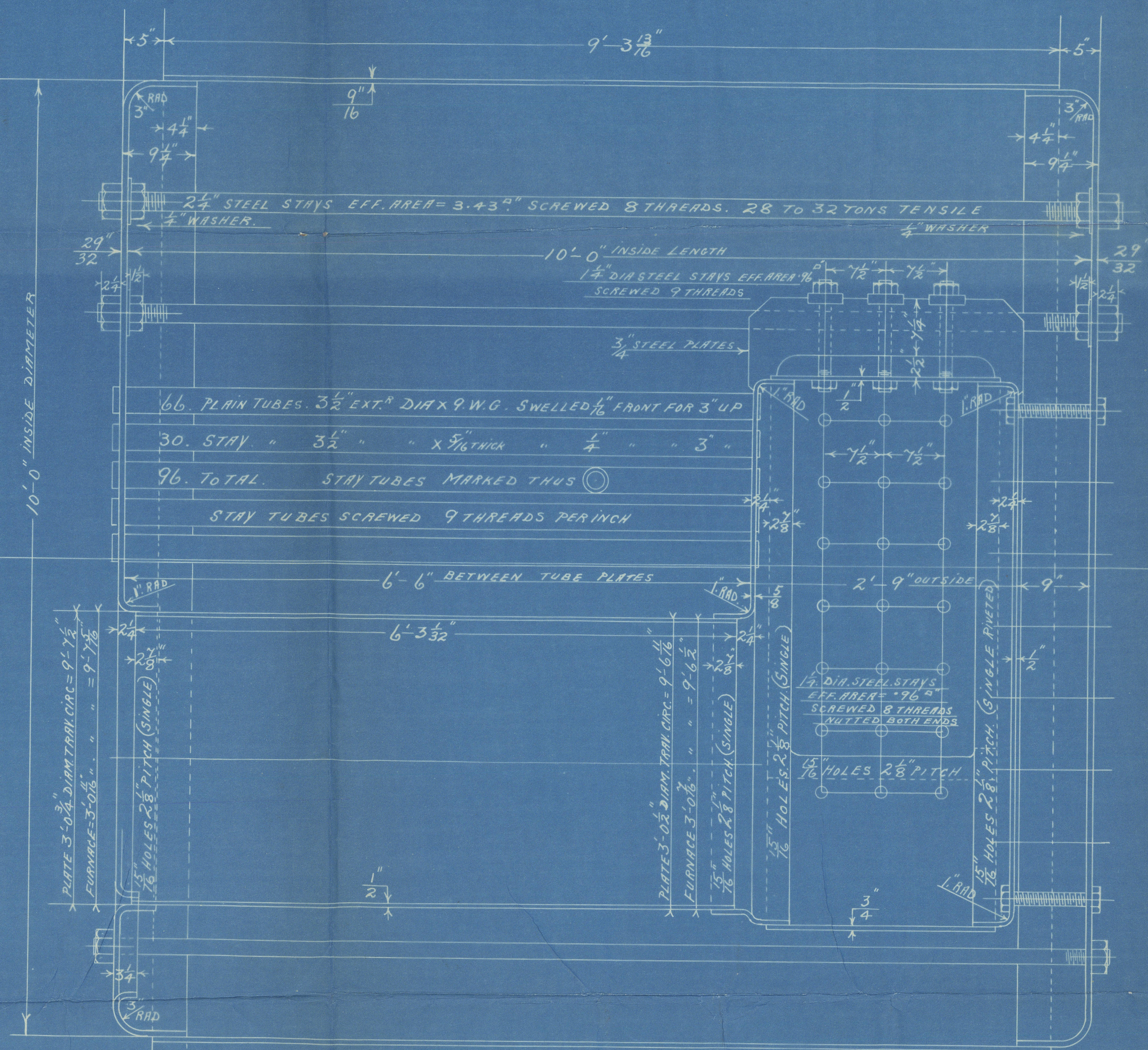
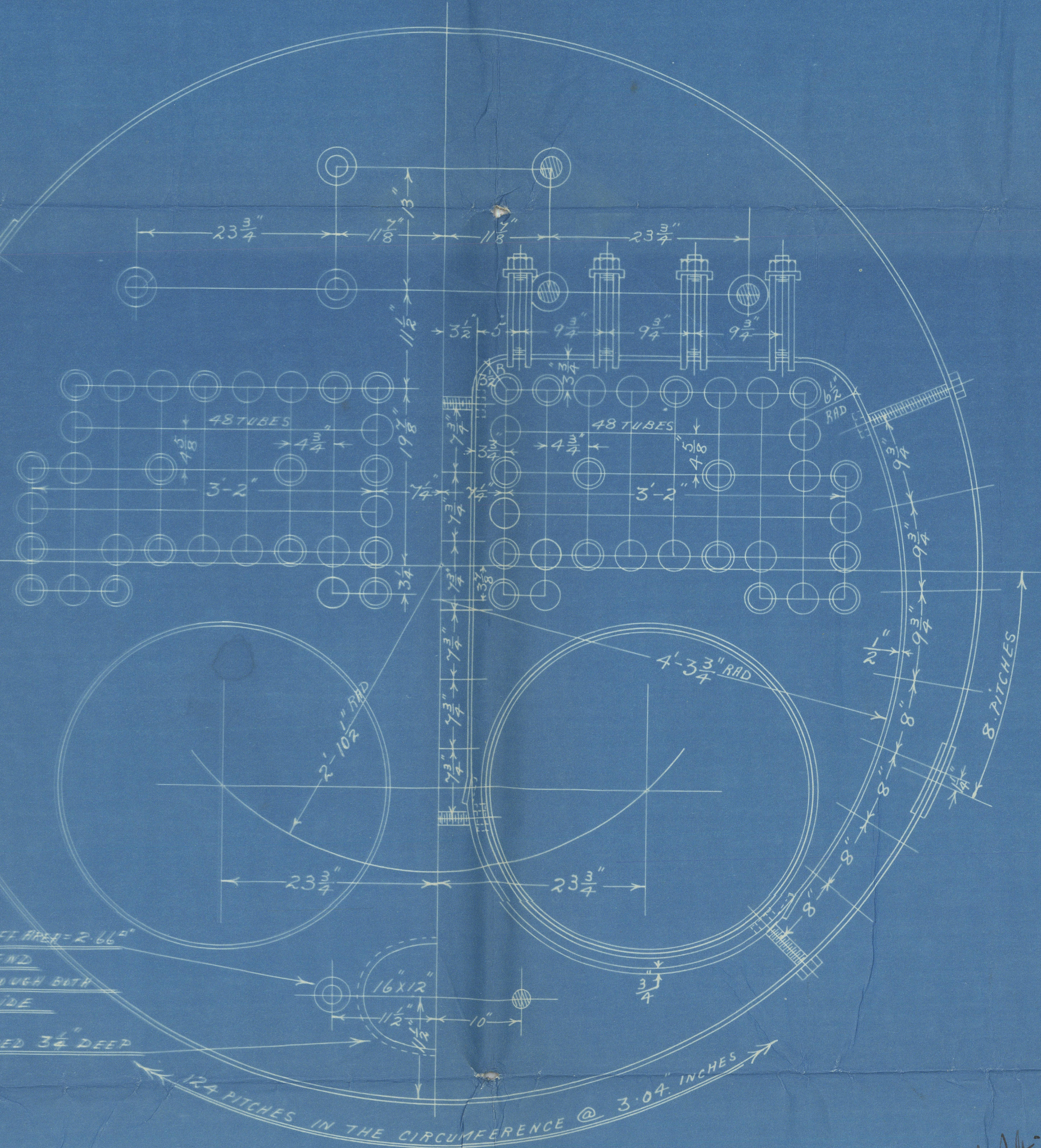
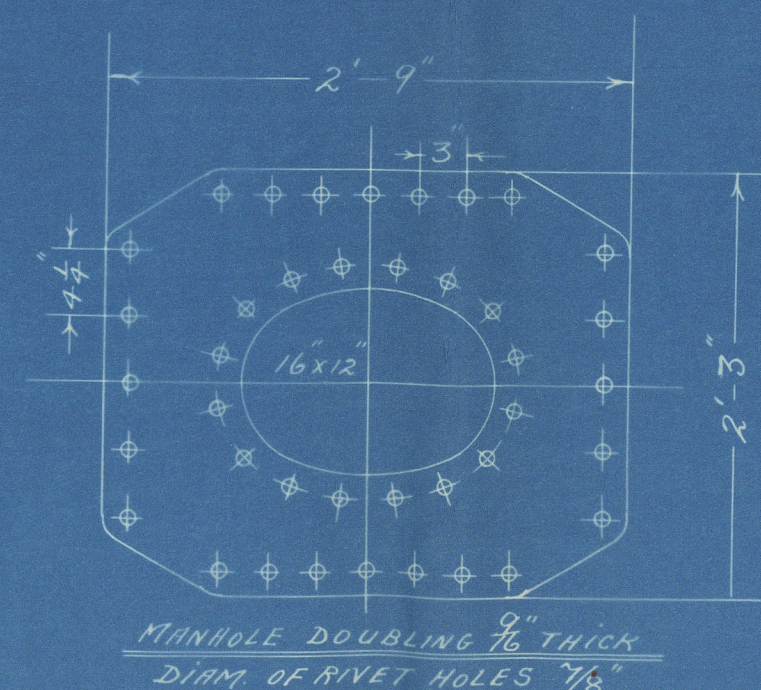
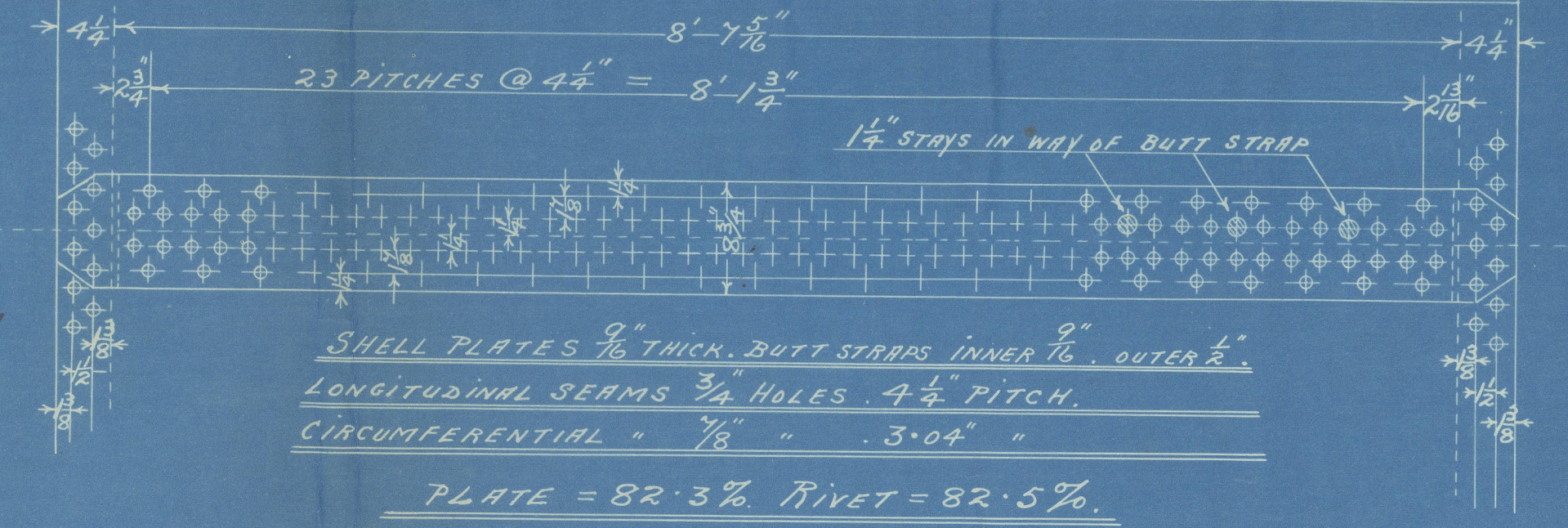


4/2/12



TENSILE STRENGTH OF SHELL PLATES, BUTT STRAPS, & GIRDERS, 28 TO 32 TONS.  
STEEL THROUGHOUT EXCEPT TUBES WHICH ARE OF IRON.  
(ALL HOLES DRILLED IN PLACE)  
TO PASS LLOYDS SURVEY FOR 100 LBS WORKING PRESSURE.

HEATING SURFACE  
TUBES = 572  
COMB. CHAMBERS = 118  
FURNACES = 65  
TOTAL = 755  
GRATE SURF. (OIL FUEL) =



# AUXILIARY BOILER

## ENC N<sup>o</sup> 419

Scale 1" = 1 foot.

DRAWING N<sup>o</sup> 5559

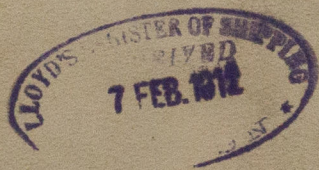


Auxiliary Boiler No 419  
by

Clyde & Co. Ltd.

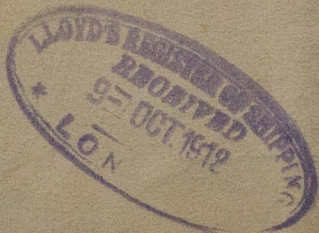
for their No 298 & Co.

100 lbs working pressure.

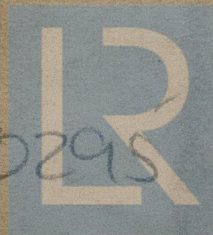


Old Motor.  $\frac{3}{8}$  "Yordonian" "Badger State"

Greenock Repal. No 16329.



W297-0295



© 2019

Lloyd's Register  
Foundation