

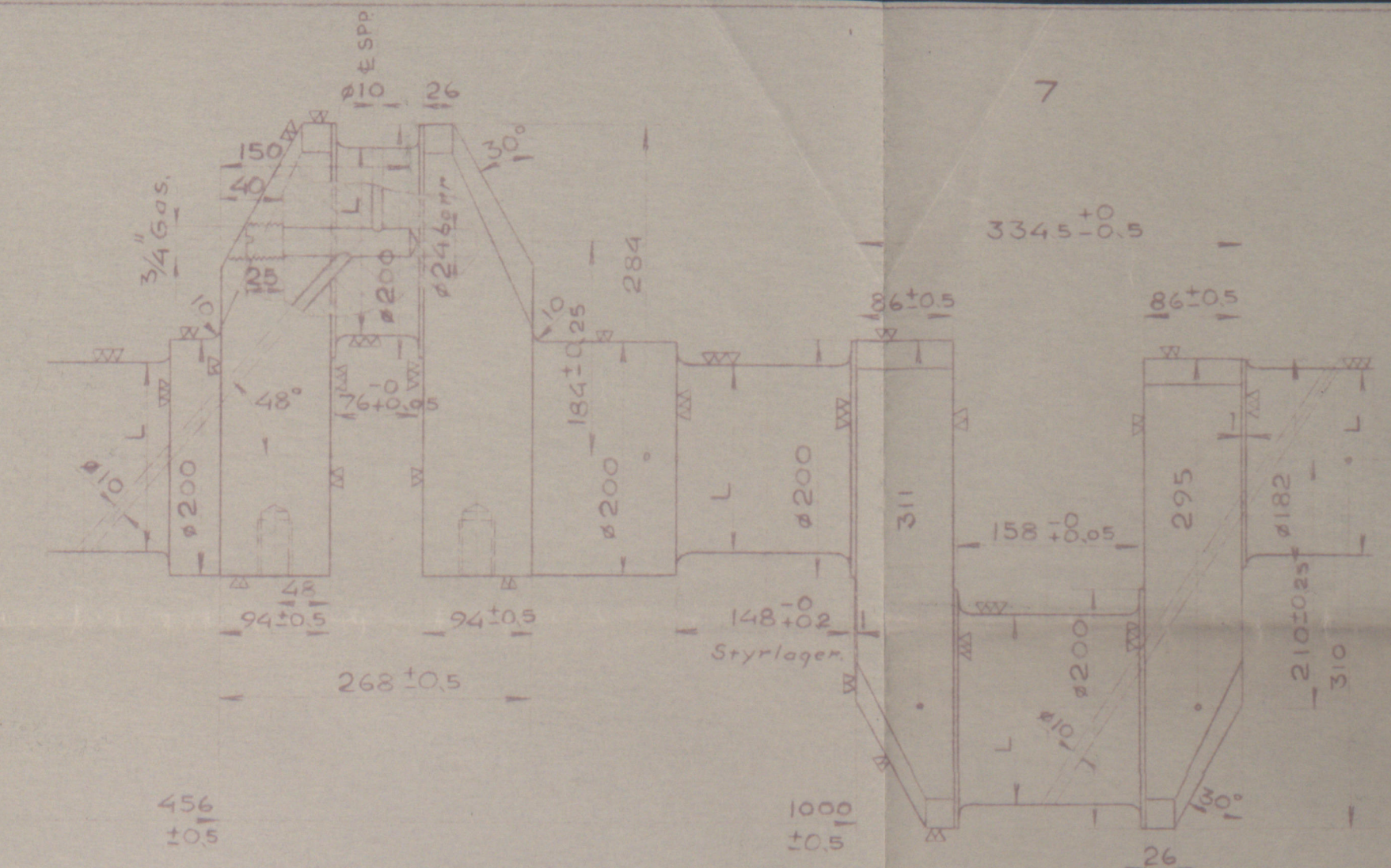
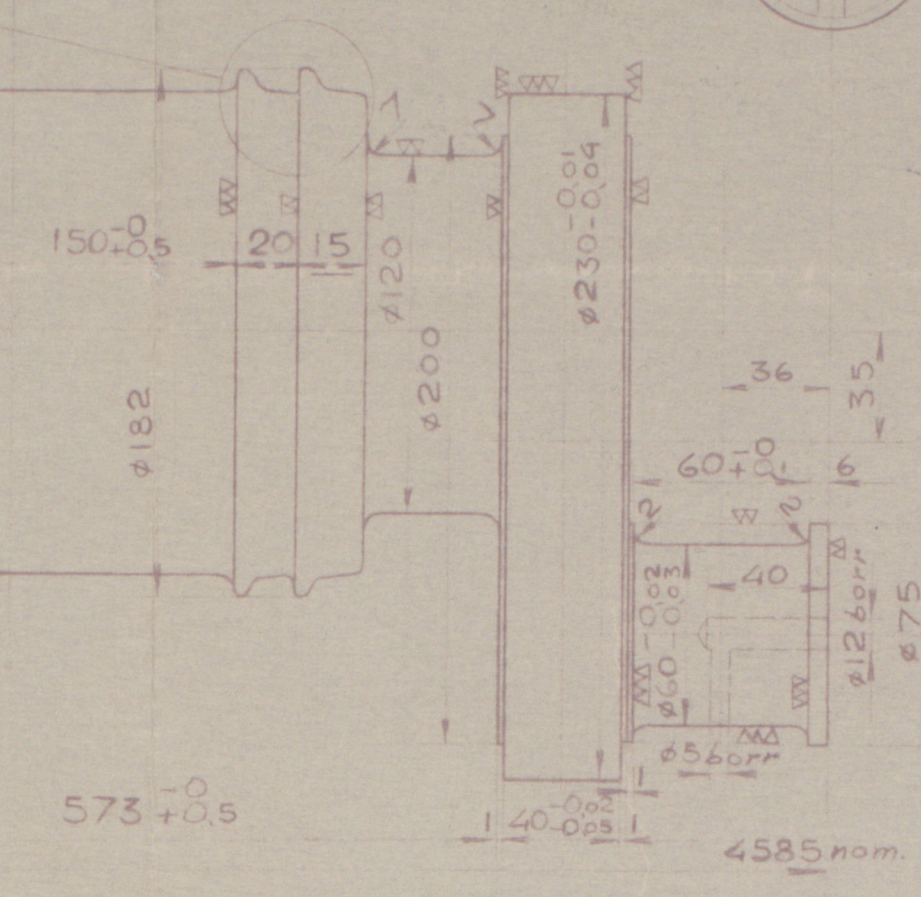
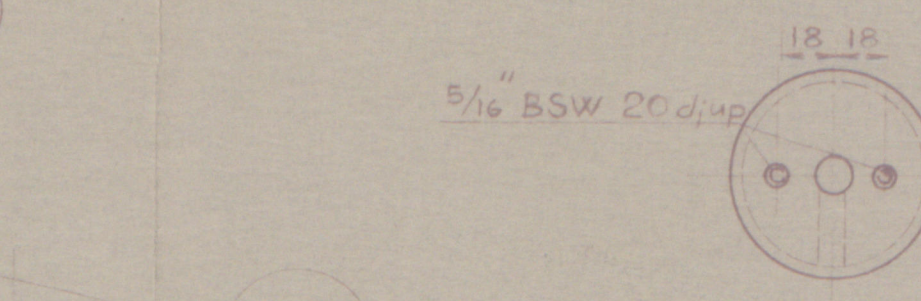
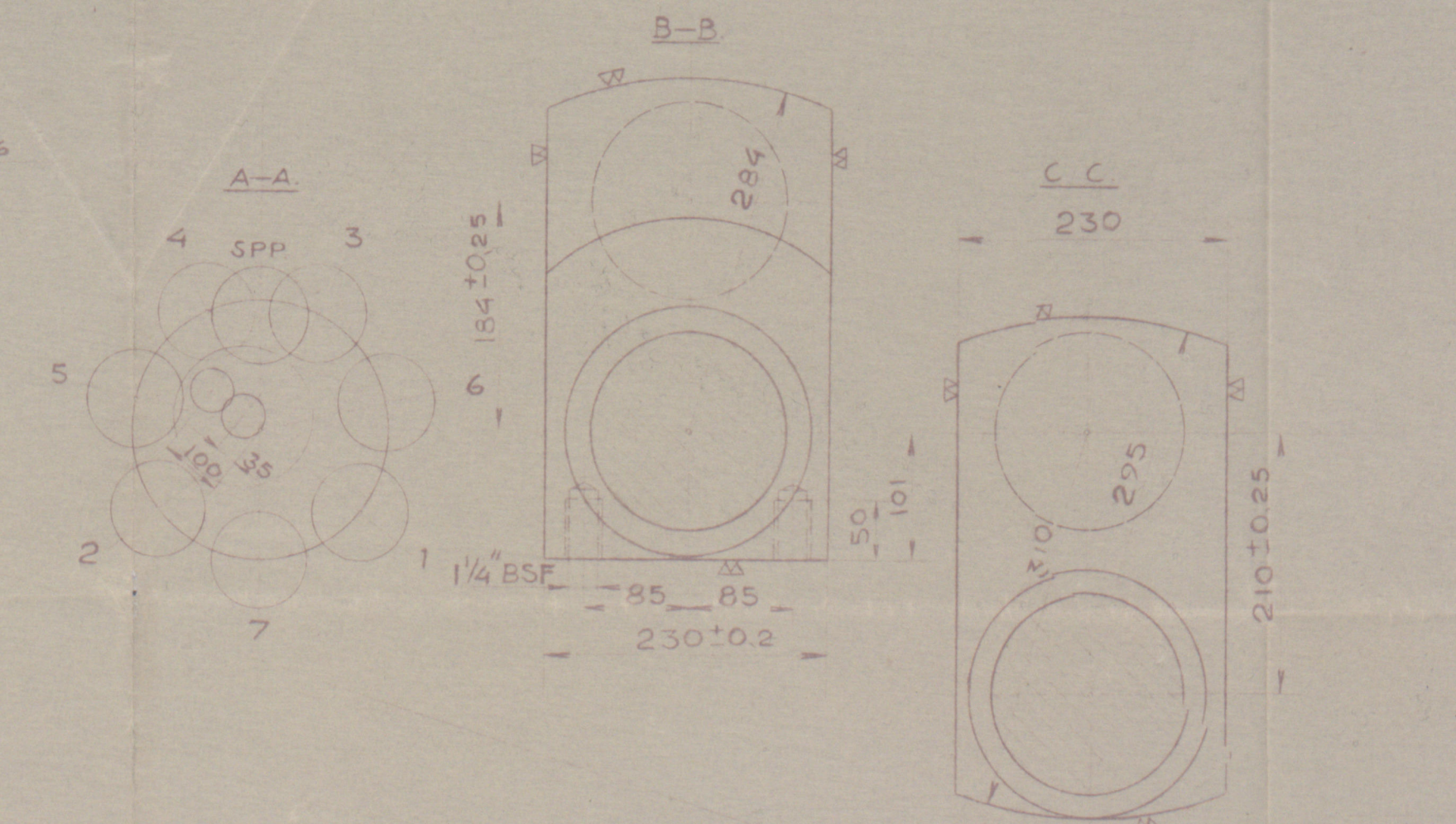
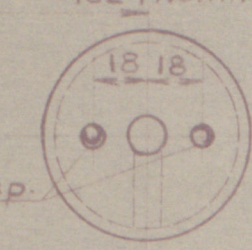
4	Kil-	Kil 20x12x60
3	HS	Eni LLOYD Vevax m. komp. a. vata-pp
2	"	" " vata-pp släng
1	"	" " " "

13. 6. 1939
 LLOYD'S REGISTER OF
 SHIPPING
 GOTENBURG

$L = \phi 160 \pm 0.05$
 Ovalitet max. 0.03

Skruklarnas skarpa kanter avrundas Rc: 2 mm.

5/16 BSW 20 d/up



19/6/39

Thelander
 © 2019
 Lloyd's Register
 Foundation

W245-0176

m.o. "HELLESOND"

CRANICSHAFI

Oslo RPT No. 5442

W295-0176



© 2019

Lloyd's Register
Foundation