

Pumping Arrangement Nos 230 & 7.

S/S "Dynamo."

Supplement to the Pump

B. WILLIAMSON & SON,

WORKINGTON.

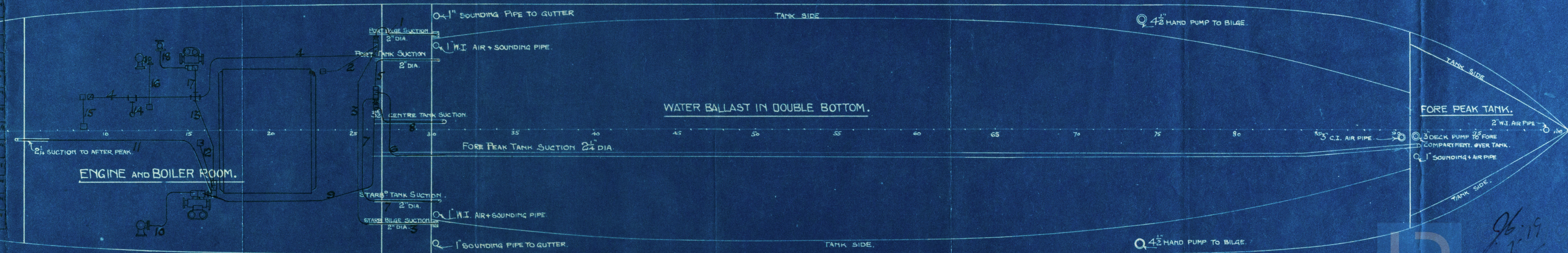
Row 1839

© 2019

Lloyd's Register
Foundation

W29-0052

PIPE No.	NAME OF PIPE.	DIA.
1	PORT BILGE SUCTION.	2"
2	BOILER ROOM BILGE SUCT.	2"
3	STARBOARD BILGE SUCTION.	2"
4	MAIN " "	2 1/2"
5	PORT TANK " "	2"
6	FORE PEAK TANK SUCTION.	2 1/4"
7	STARBOARD TANK SUCTION.	2"
8	CENTRE " "	3 1/2"
9	BALLAST PUMP SUCTION	3 1/2"
10	" " "FROM SEA	3 1/2"
11	" " "AFTER PEAK	2 1/4"
12	" " "SPECIAL ENG. ROOM BILGE	2 1/2"
13	" " "FROM MAIN BILGE LINE	2 1/2"
14	ENG. BILGE PUMP SUCTION.	2 1/2"
15	ENG. ROOM AFT. BILGE SUCTION.	2"
16	BILGE INJECTION.	3 1/2"
17	GENERAL DRAIN PUMP SUCT. FROM MAIN BILGE	2 1/2"
18	" " " " "SEA.	2 1/2"



10/7/19



96-19
9-7-19

W29-0052