



R. Williamson & Son  
— " —

No 230 & 237, 238  
— " —

Collision Bulkhead.  
— " —

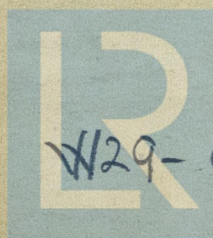
LLOYD'S REGISTER.  
LONDON.  
RECD 20 SEP 1919  
ANSD



No 230. - S.S. "Dynamo" 1st  
Entry Rpt 1839

Gb. 40524

S/Ardehan.



© 2019

W29-0049 Lloyd's Register  
Foundation

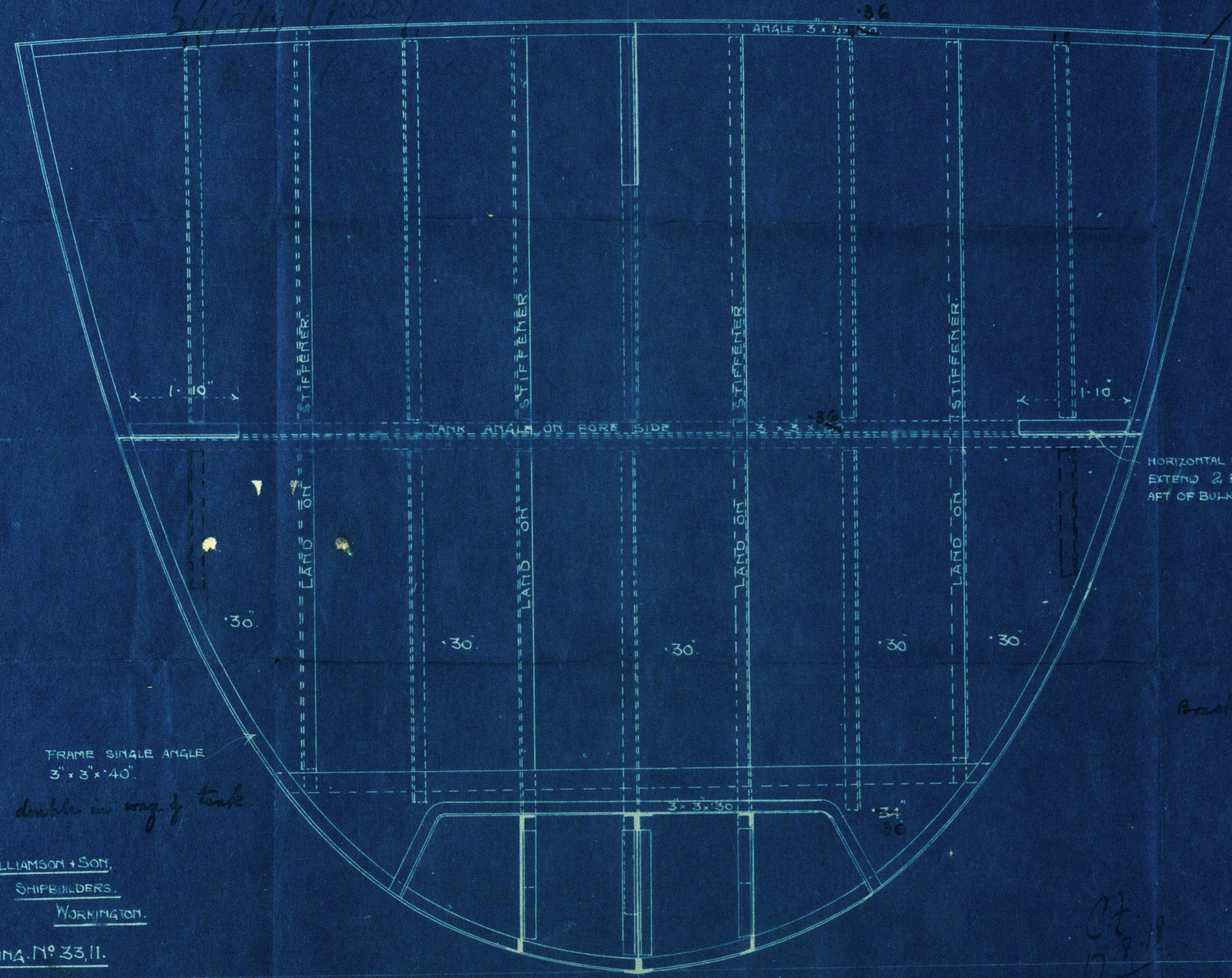


S. S. N<sup>o</sup> 230+237. 238

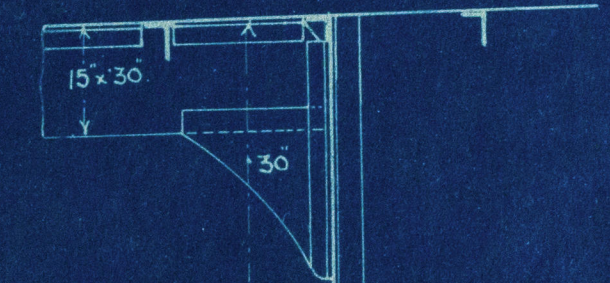
BULKHEAD ON FRAME 91.

LOOKING FORWARD.

SCALE  $\frac{1}{2}$ " = 1 FOOT.



corners made Watertight  
to surveyors satisfaction



HORIZONTAL BRACKET TO  
EXTEND 2 FRAME SPACES  
AFT OF BULKHEAD.

4" x 3" x 3/4" ANGLE STIFFENERS ON FORD SIDE  
24" APART 3/4" RIVETS 4 DIAS  
APART FOR 15% LEN. AT ENDS.

DOUBLE ANGLES 3" x 3" x 3/4" IN LIEU OF BRACKETS.

FORE PEAK TANK TOP

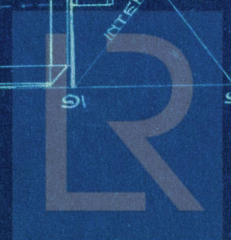
WASH PLATE.

6" x 3" x 1/2" B.O. STIFFENERS ON FORE SIDE  
SPACED 24" APART. 3/4" RIVETS  
4 DIAS. APART FOR 15% LEN. AT ENDS.

Bracket at centre line



R. WILLIAMSON & SON,  
SHIPBUILDERS,  
WORKINGTON.  
TRACING N<sup>o</sup> 33, 11.



17/8/19 (238)  
17/8/19