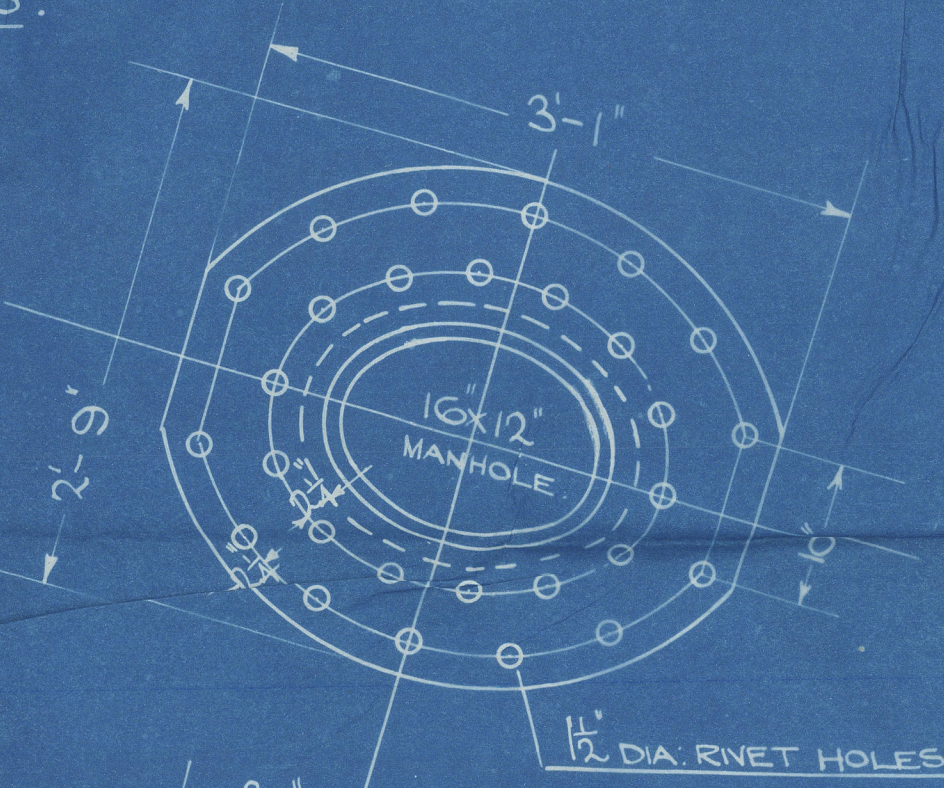


DETAIL OF STAY TUBES.
SCALE HALF SIZE



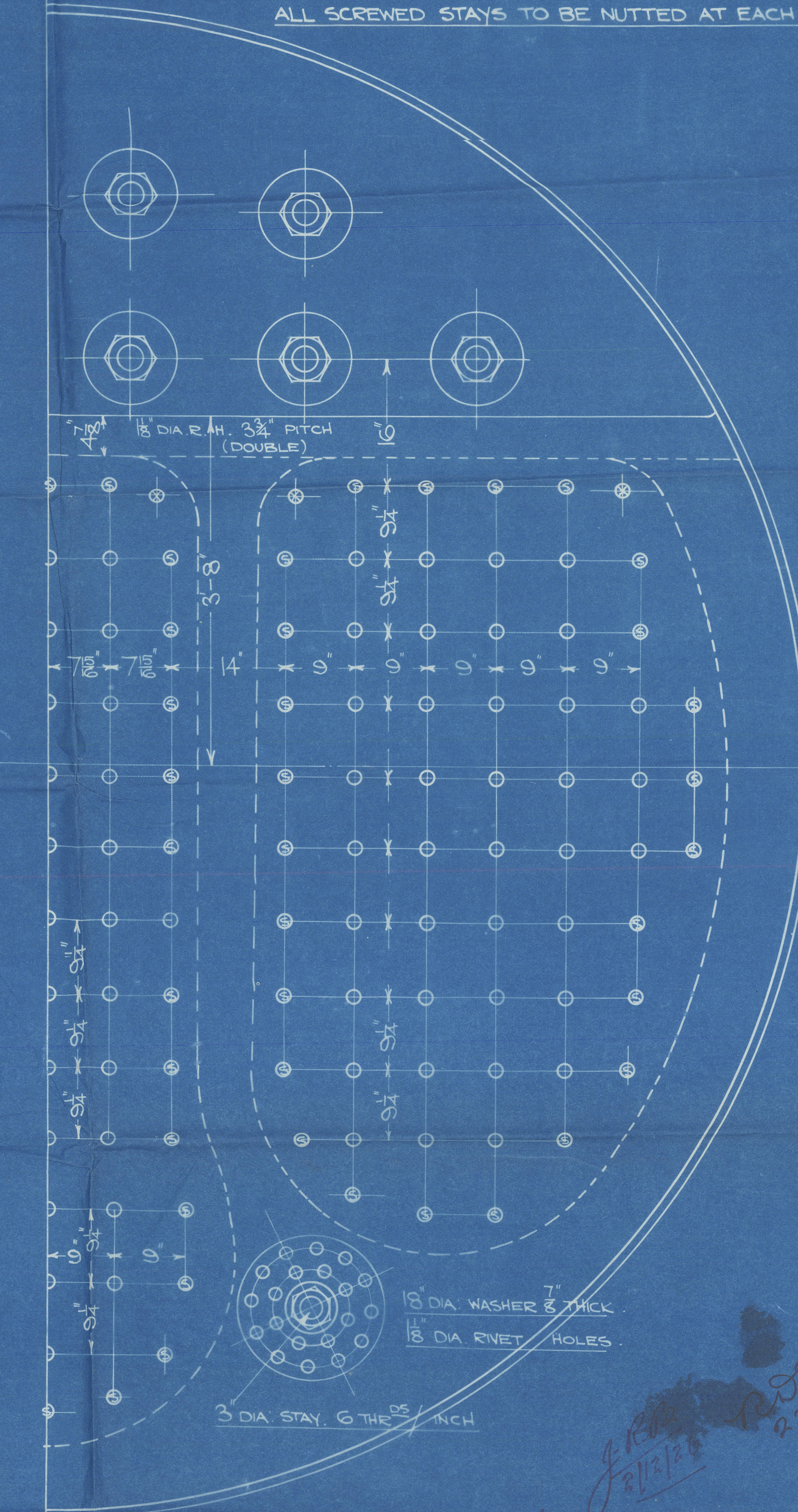
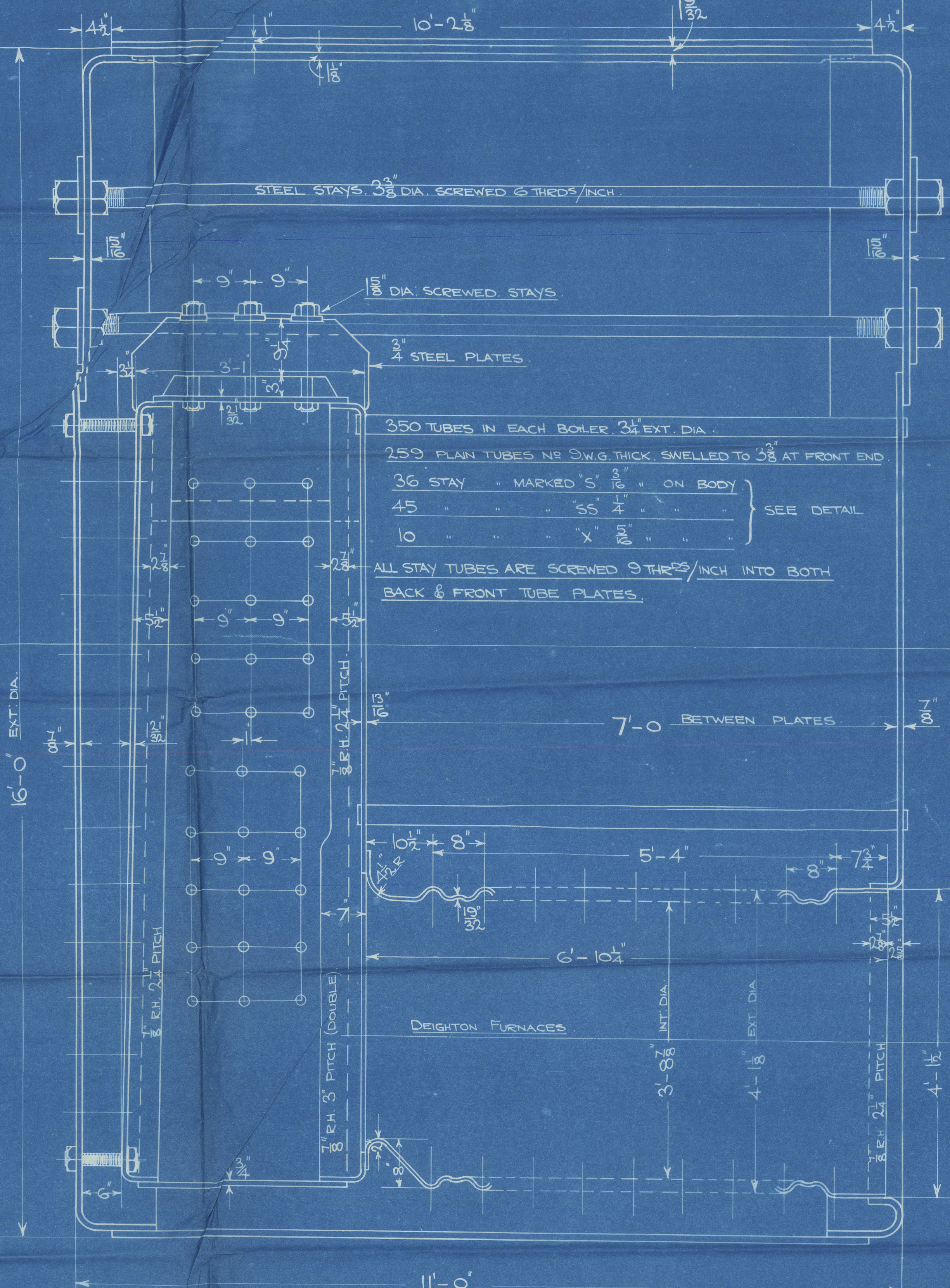
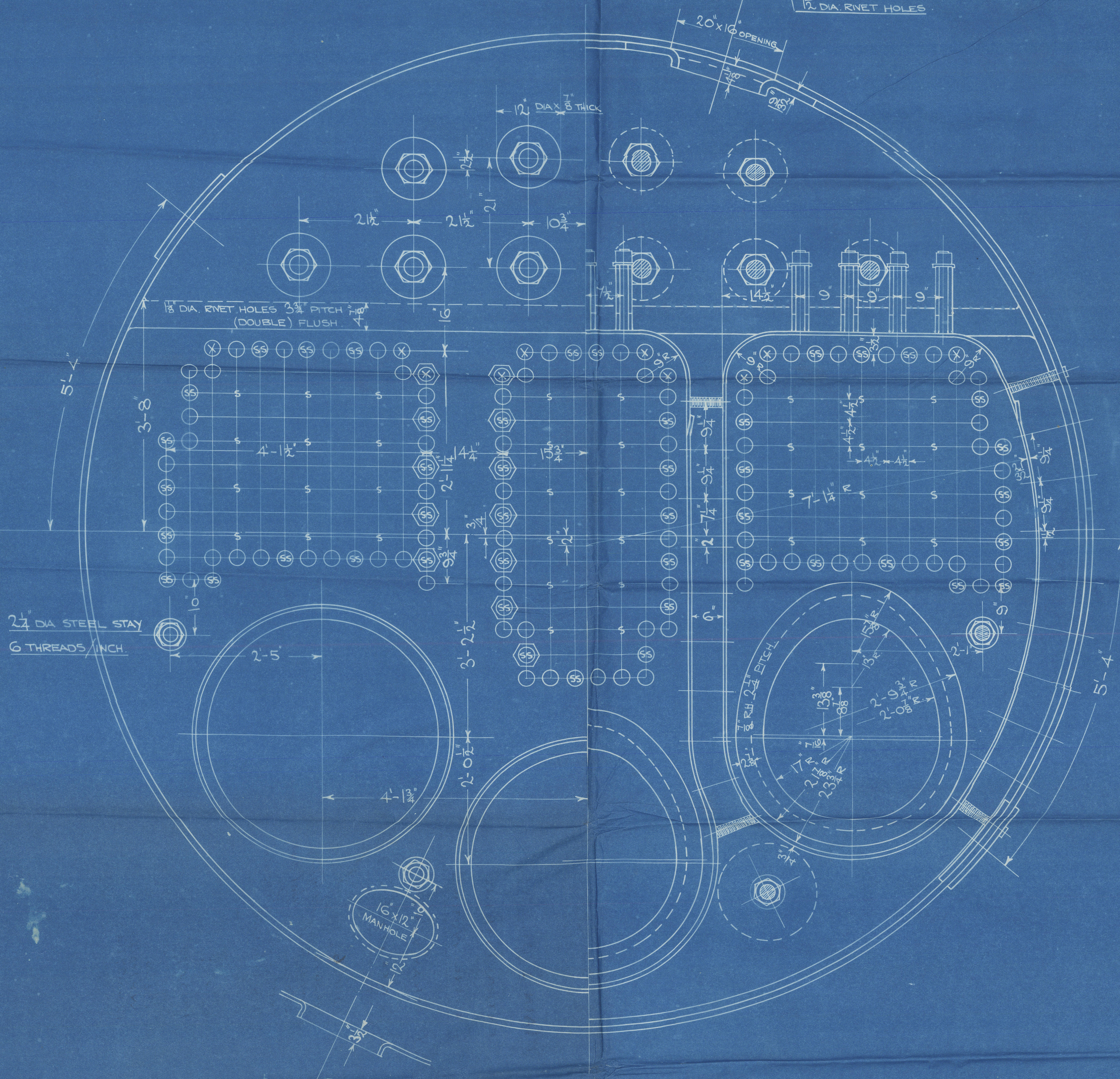
BOILERS No 986.987
WORKING PRESSURE = 180 lbs/sq. in.
TEST " " 320 lbs/sq. in.
3 OFF LLOYDS SURVEY.
SCALE = 1" = 1 FOOT.

LIMIT OF TENSILES.		
SHELL BUTTS & GIRDERS	28 TO 32 TONS	SIEMENS MARTIN STEEL
OTHER PLATES	26 " 30 "	" " " "
LONGITUDINAL STAYS	28 " 32 "	" " " "
SCREWED STAYS	26 " 30 "	" " " "
RIVET BARS	26 " 30 "	" " " "
TUBES	"	WROG IRON

7/11/10 BOILER PARTICULARS.		
	1 BOILER	3 BOILERS
HEATING SURFACE OF TUBES	2080	6240
" " FURNACES	144	432
" " COMB CHAMBERS	260	780
" " BACK TUBE PLATES	54	162
" " FRONT " "	40	120
TOTAL	2578	7734
GRATE SURFACE (5'-6" BARS)	63.25	189.75
RATIO H.S. G.S.		40.8
AREA THRO' TUBES		

SCREWED STAYS.			
MARK	DIA	THREAD	AREA
○	1 5/8	9	1.73
⊙	1 7/8	9	2.36
⊗	2 1/4	9	3.49

ALL SCREWED STAYS TO BE NUTTED AT EACH END EXCEPT AT SHELL.



Nos 986.987

CENTRAL MARINE ENGINE WORKS,
WEST HARTLEPOOL.

CENTRAL MARINE
DRAWING OFFICE
28 NOV 1920
No 40624

MAIN BOILERS.

CENTRAL MARINE

ENGINE WORKS.

WM GRAY & CO LD.

SS Nos 986-987

No 986

1403696

Lloyds Test

320 lbs

WP 180 lbs

14.4.27 TIDS

*the H.L.L.
report 16499
J. W. W. W. W.*

No 987

1403698

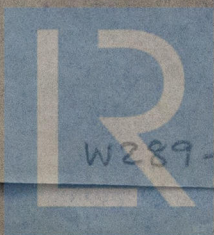
Lloyds Test

320 lbs

WP 180 lbs

20.5.27 TIDS

"Romanby"



© 2020

W289-0165 Lloyd's Register
Foundation