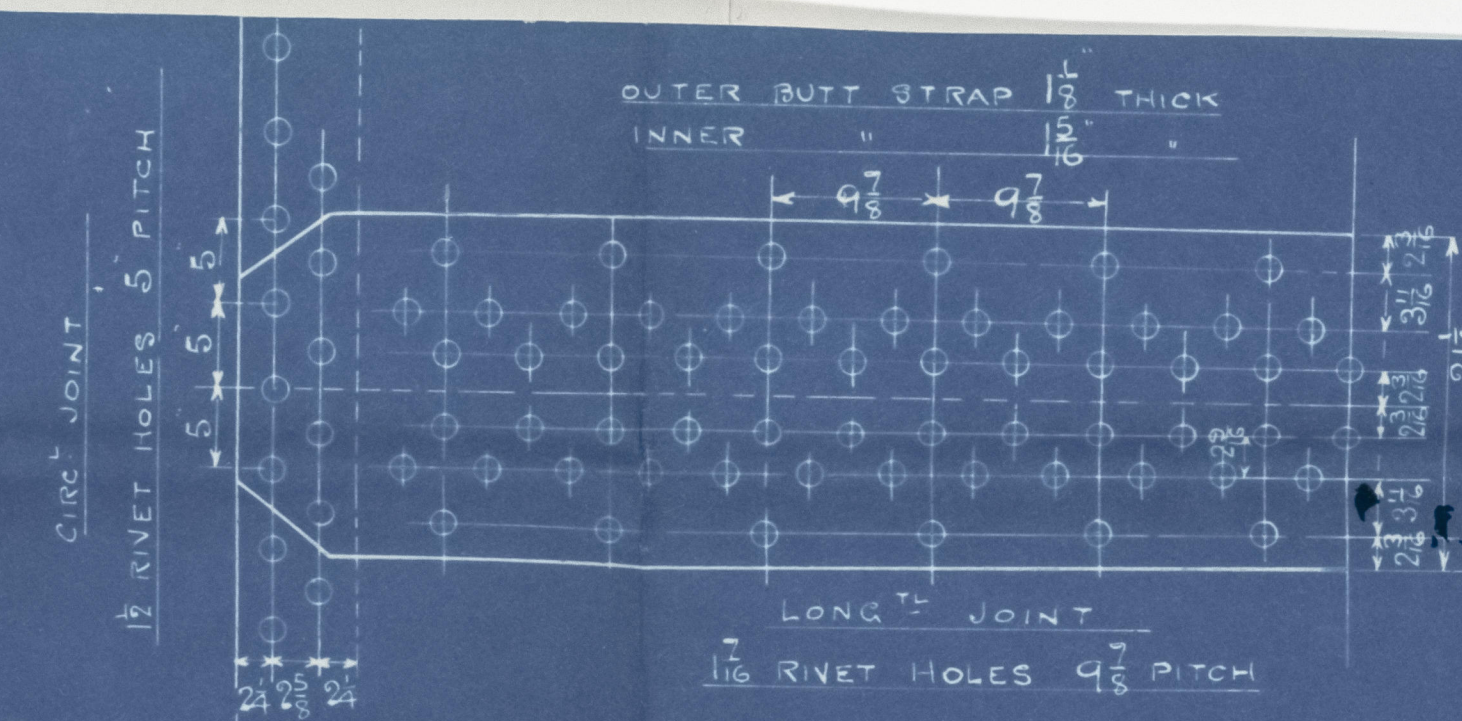


TENSILE STRENGTH OF CYL SHELL, MANHOLE RING, BUTT STRAPS & GIRDERS 28³/₄ - 32 TONS
 OF ALL OTHER PLATES 26 - 29¹/₂ TONS
 OF LONGITUDINAL STEEL STAYS 27 - 32 TONS

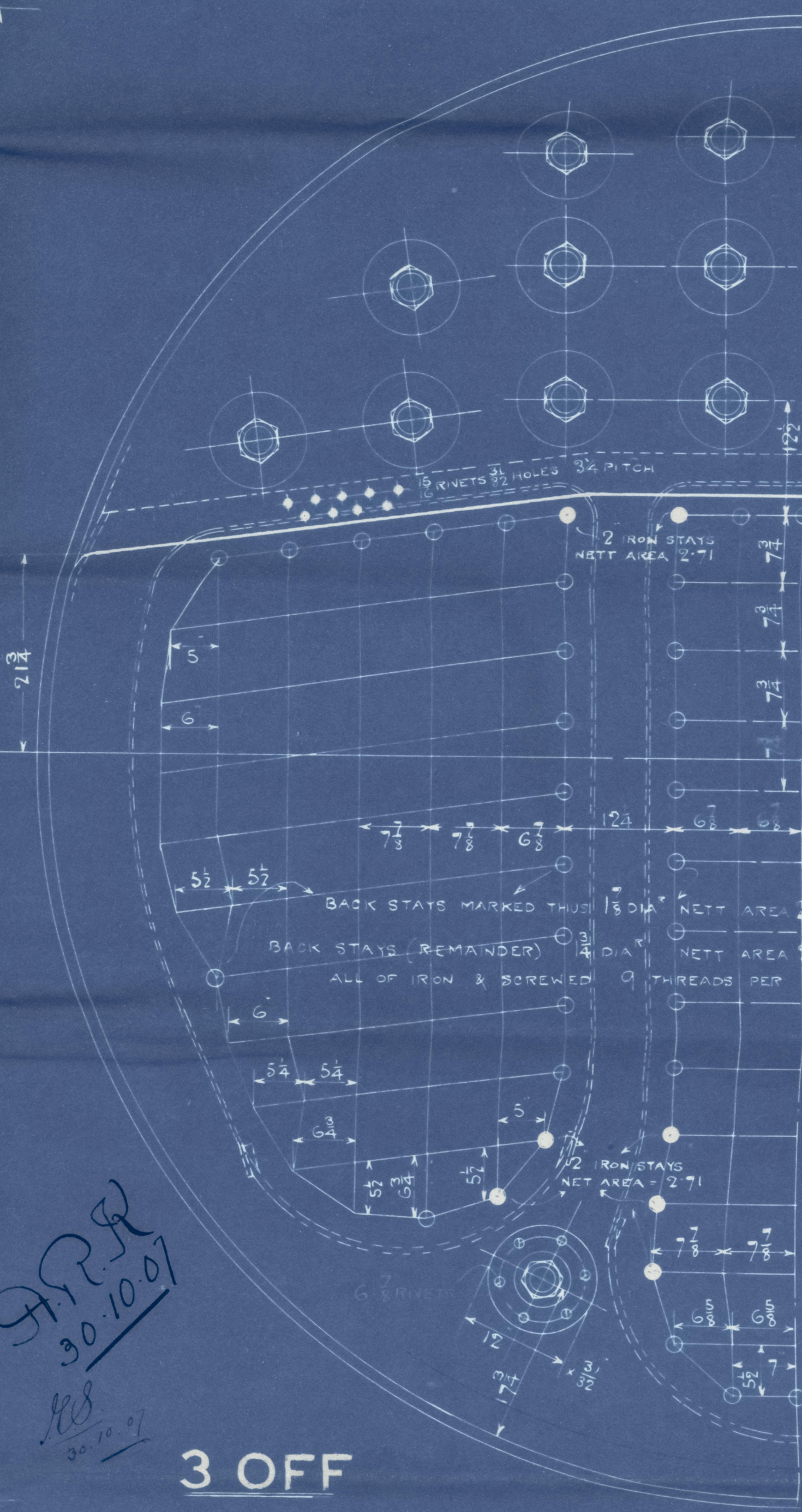
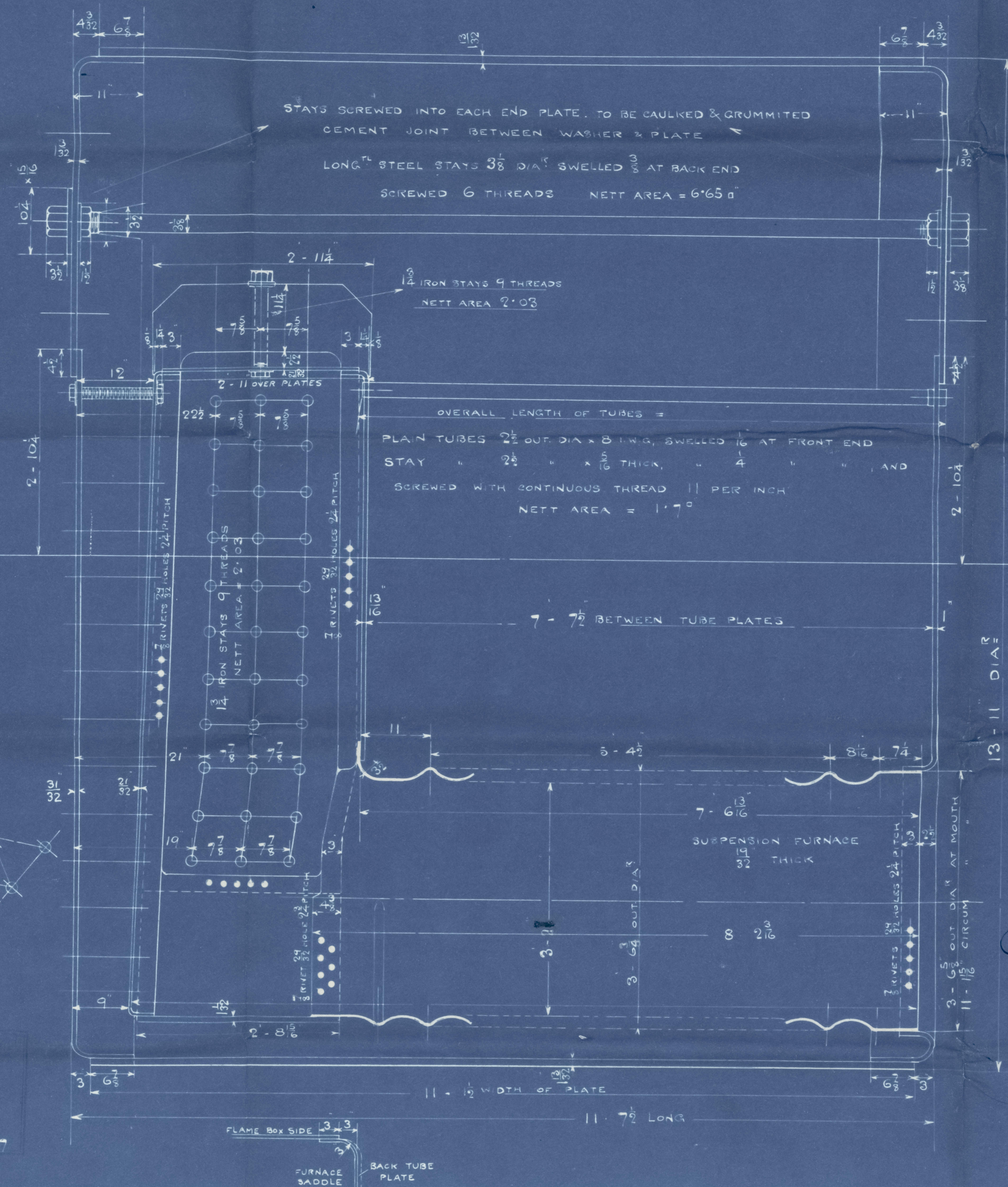
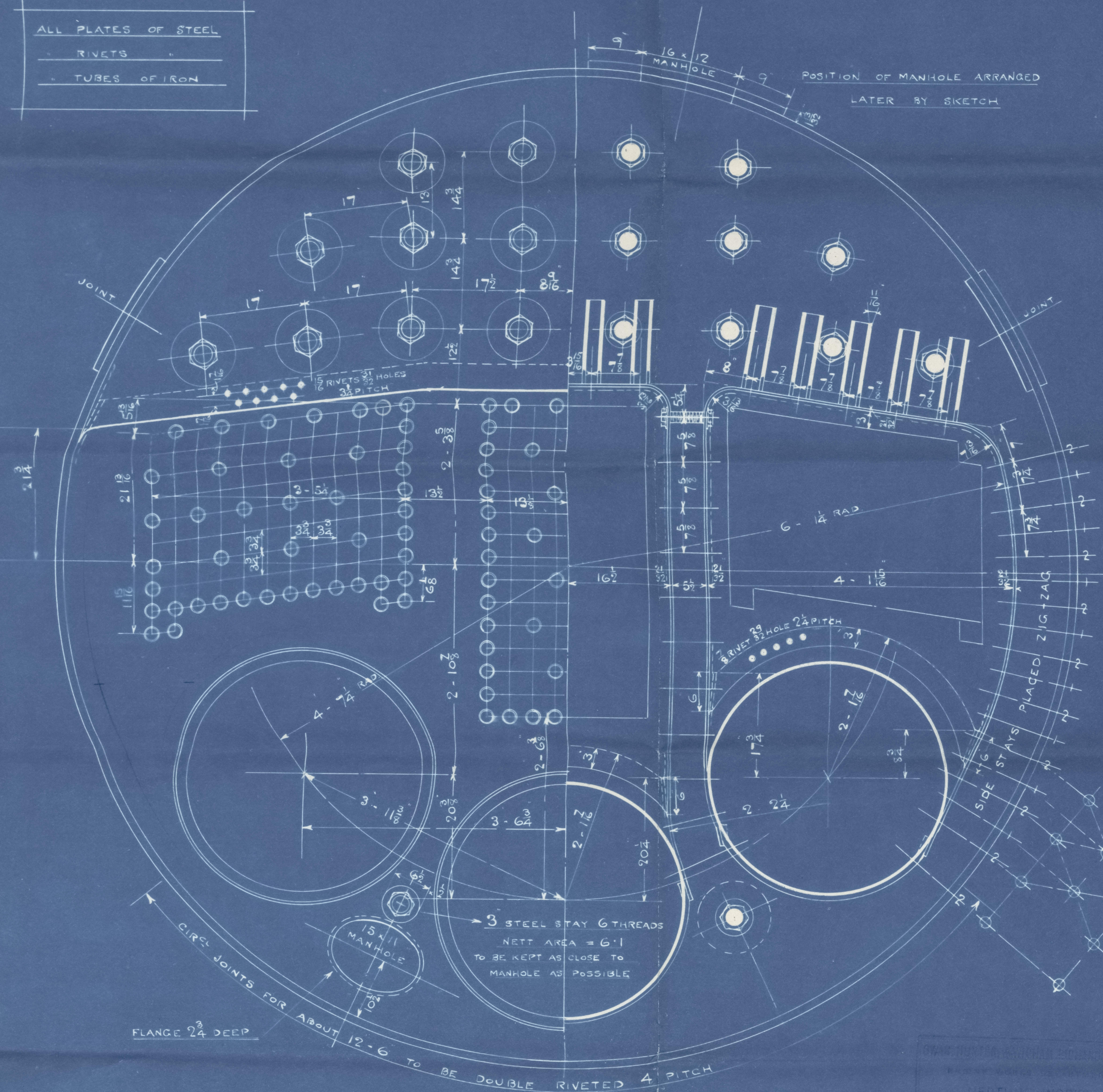
WORKING PRESSURE 213 LBS PER SQ INCH (15 ATM)
 TEST " 426 "

NOTE: ALL RIVET HOLES DRILLED IN PLACE

30/10/07
Cancelled Dec 1907



ALL PLATES OF STEEL
 RIVETS
 TUBES OF IRON



J.P.P.
30.10.07
29/10/07

3 OFF
 MAIN BOILERS NO 796

SCALE 1 INCH = 1 FOOT

NETTING WORKS
 WALKER
 4013

Newcastle on Tyne

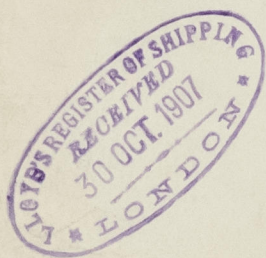
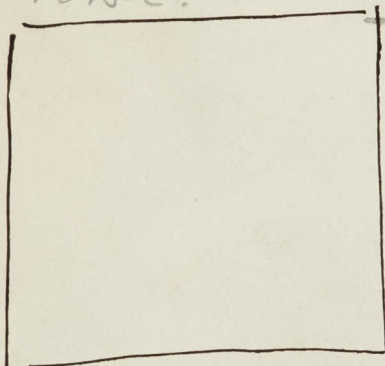
S H & W R Ltd

S.S. 796 - Main Boiler

(~~Plate~~ see
annexed plan)

"Langturn"

hwe. 55625.



© 2021

Lloyd's Register
Foundation

W287-0039