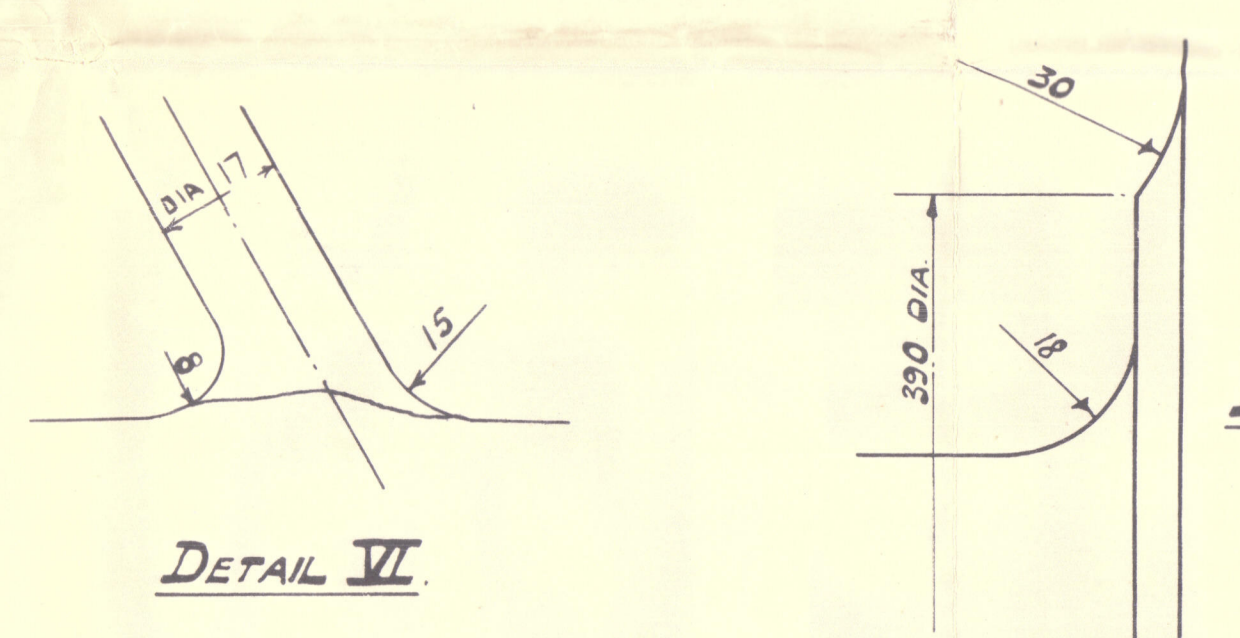
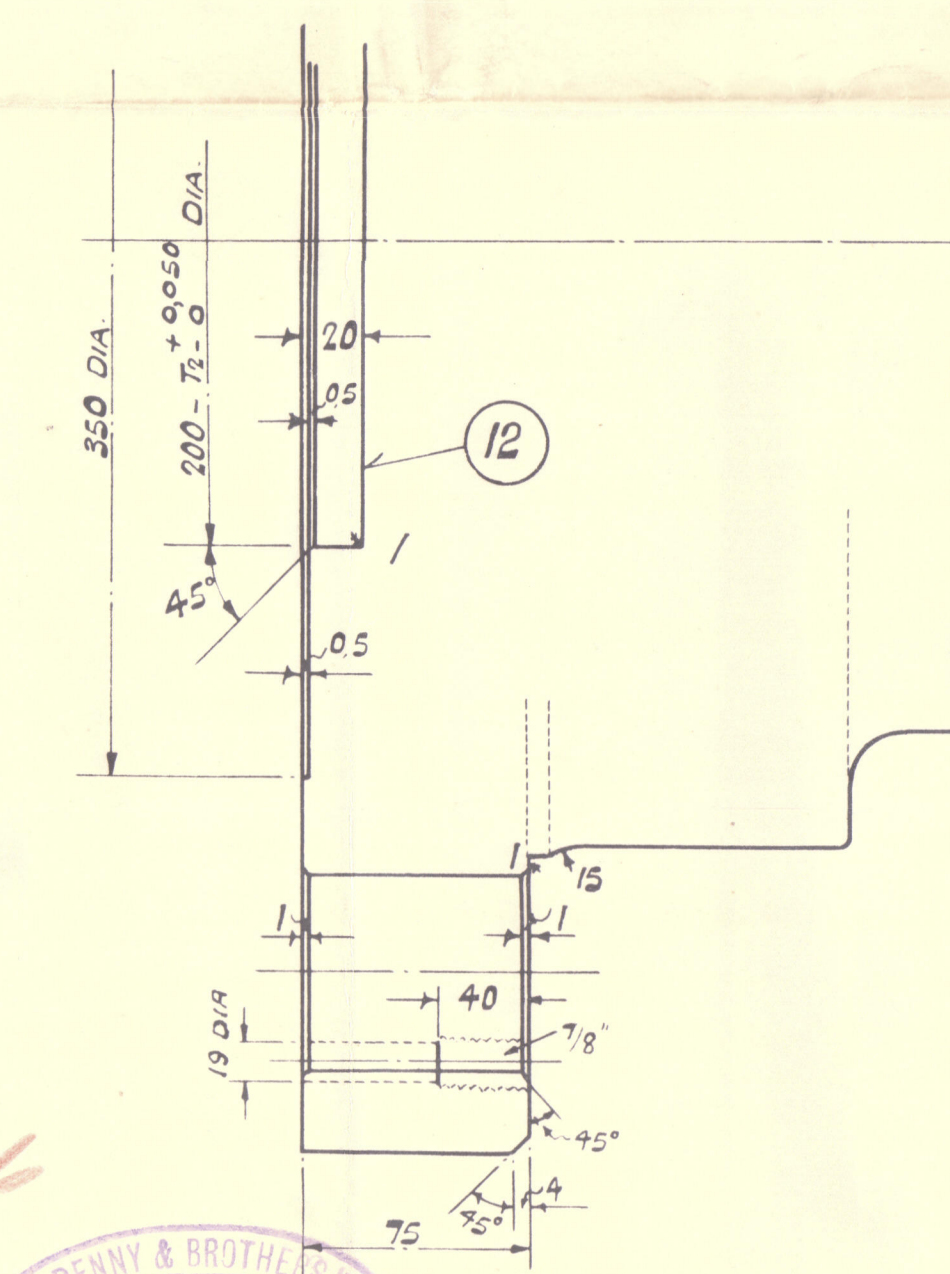
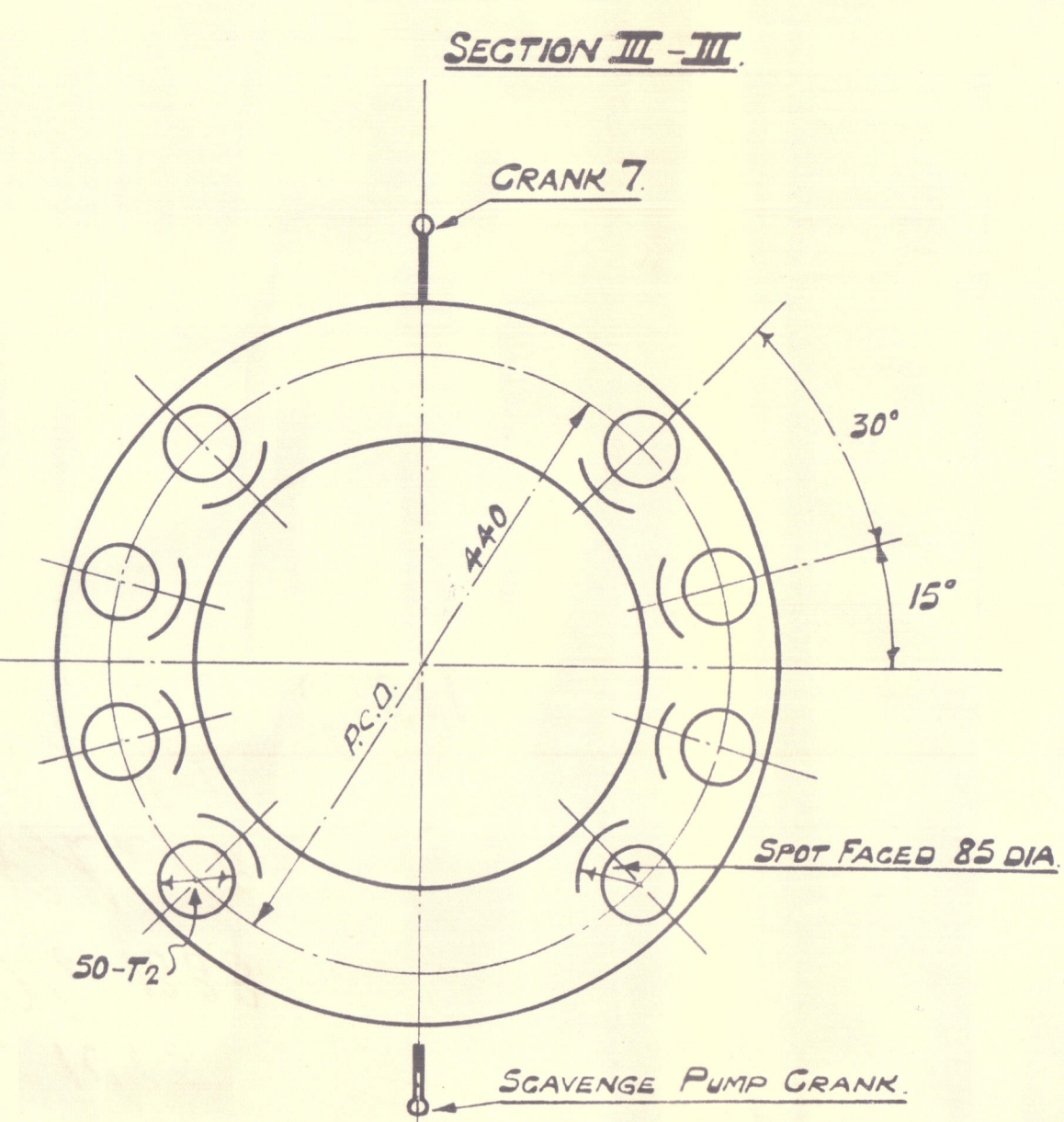
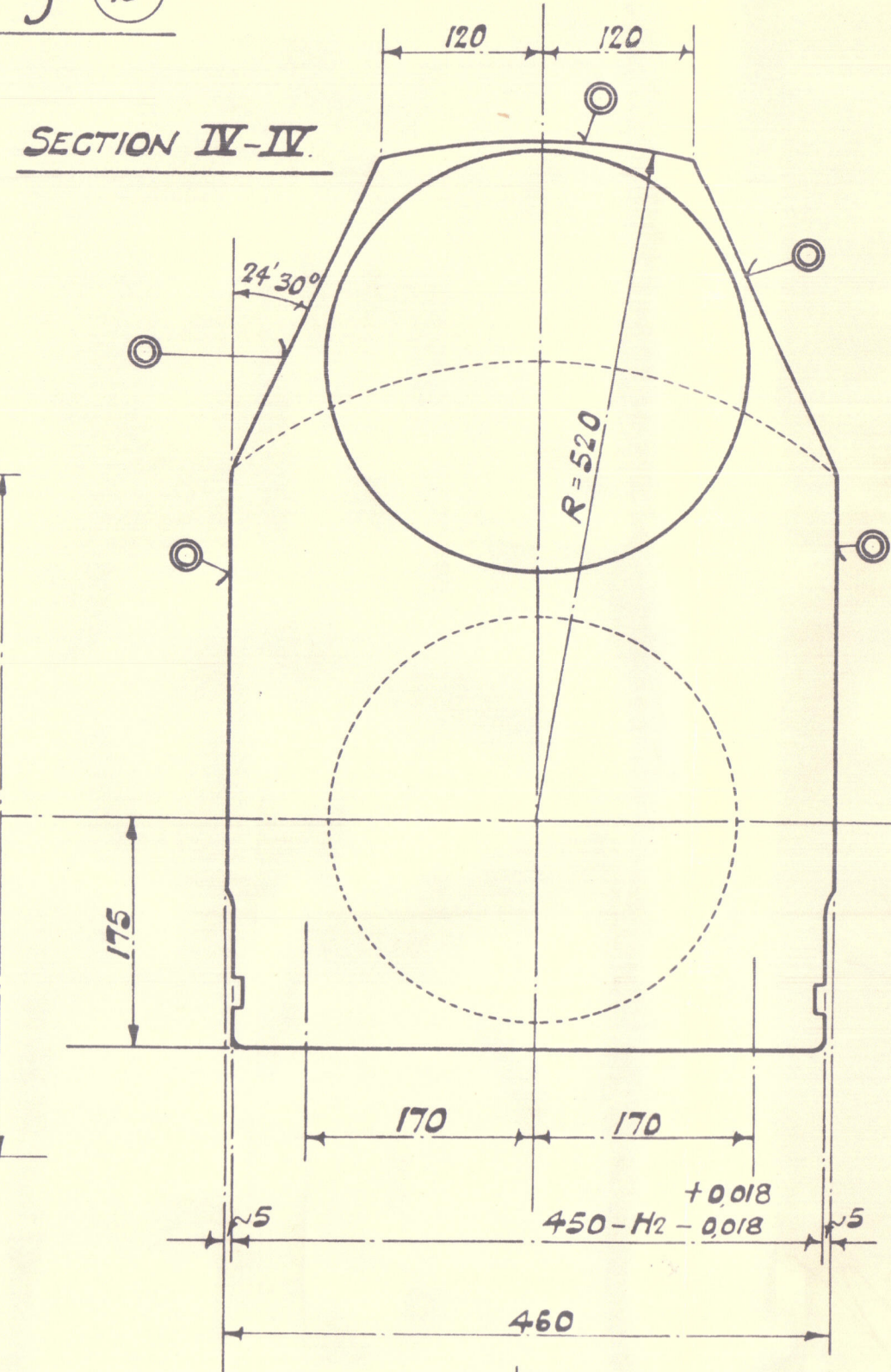
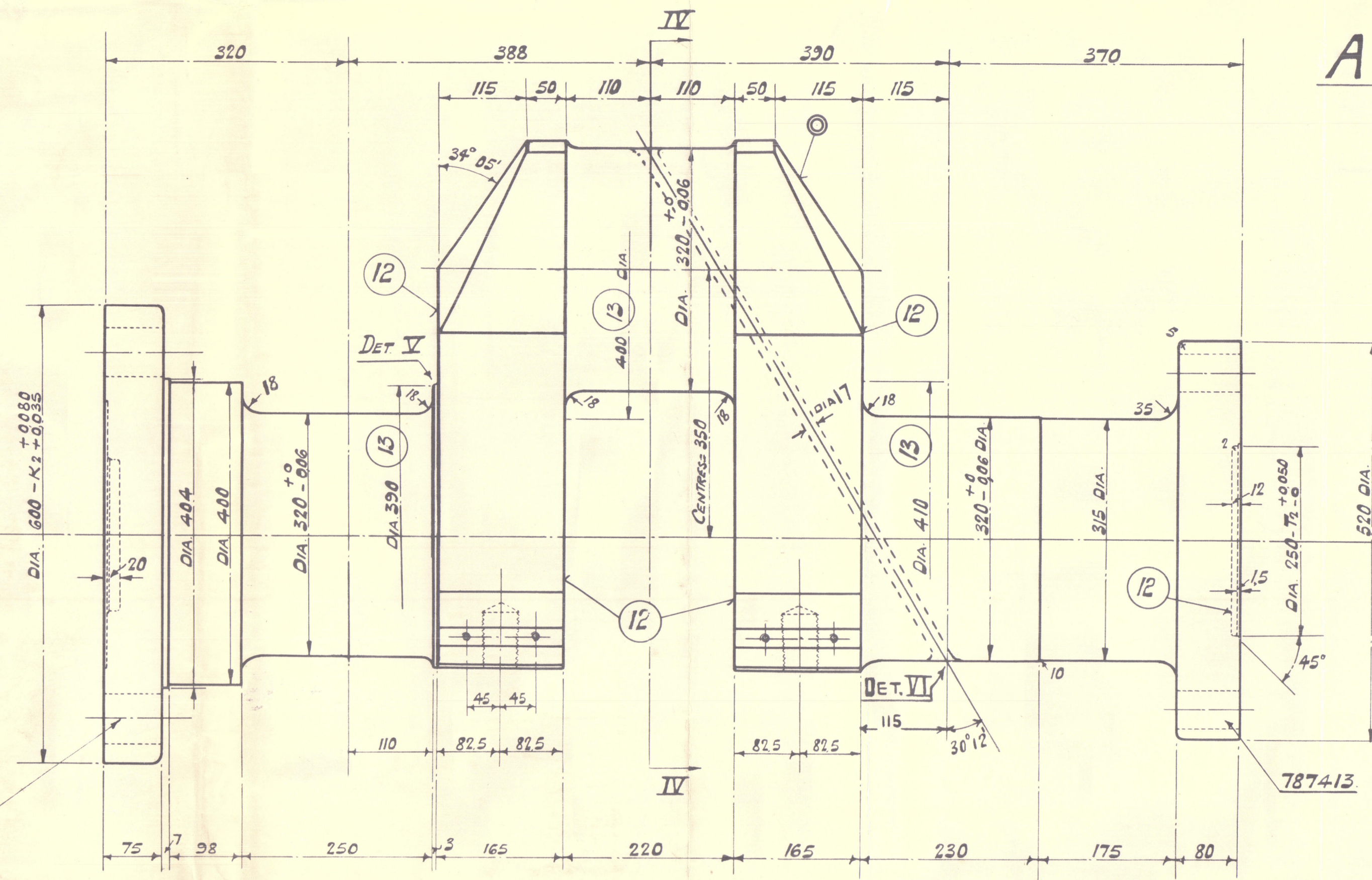
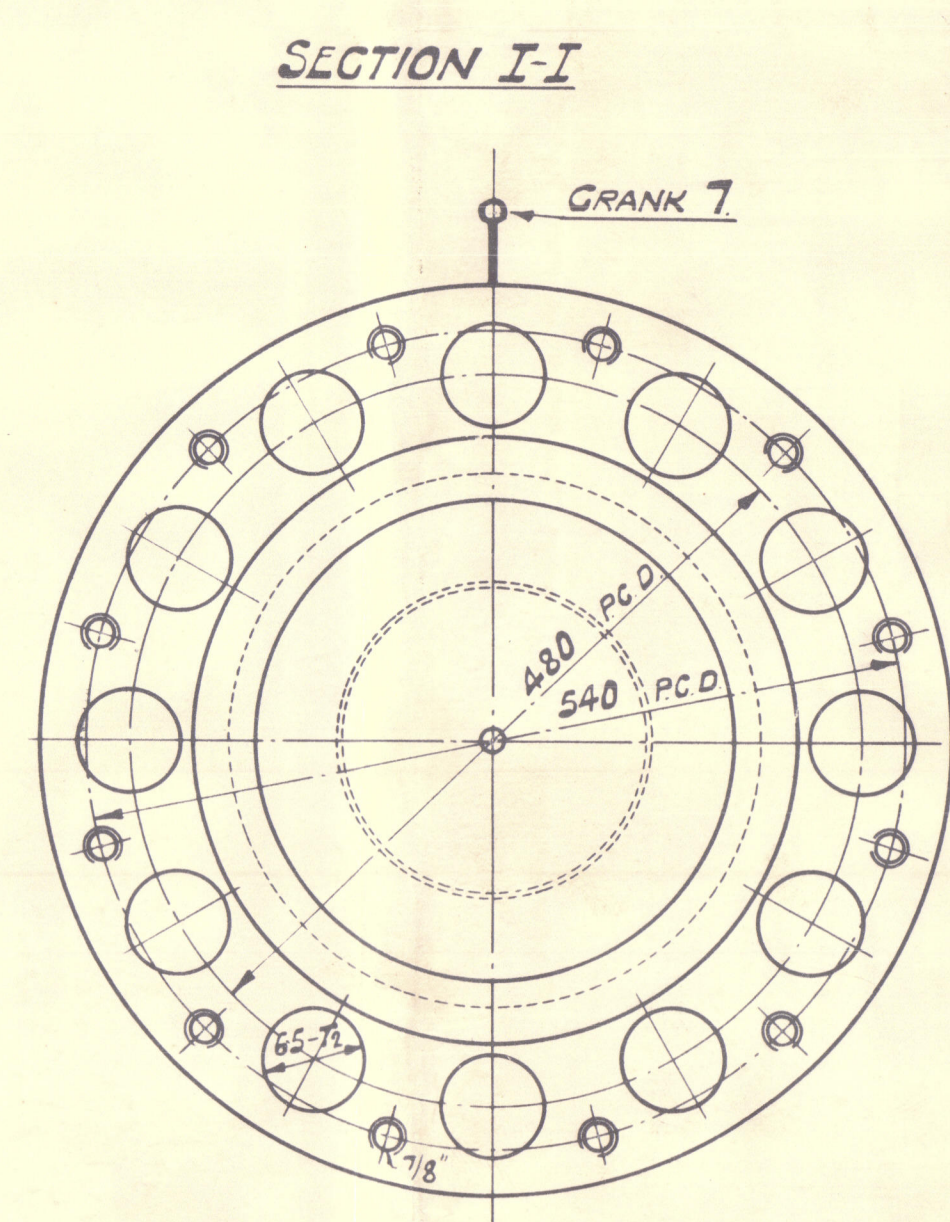
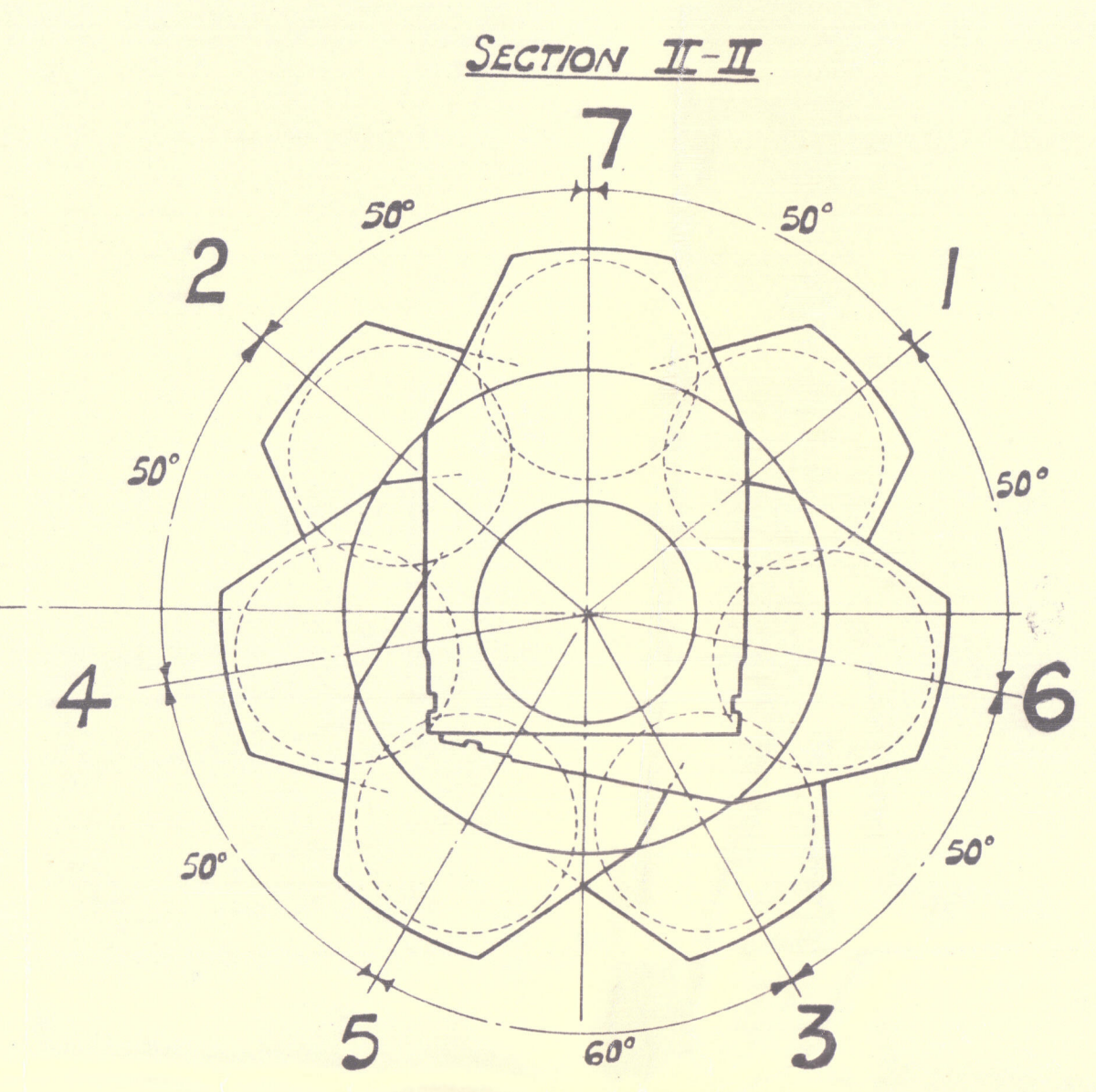
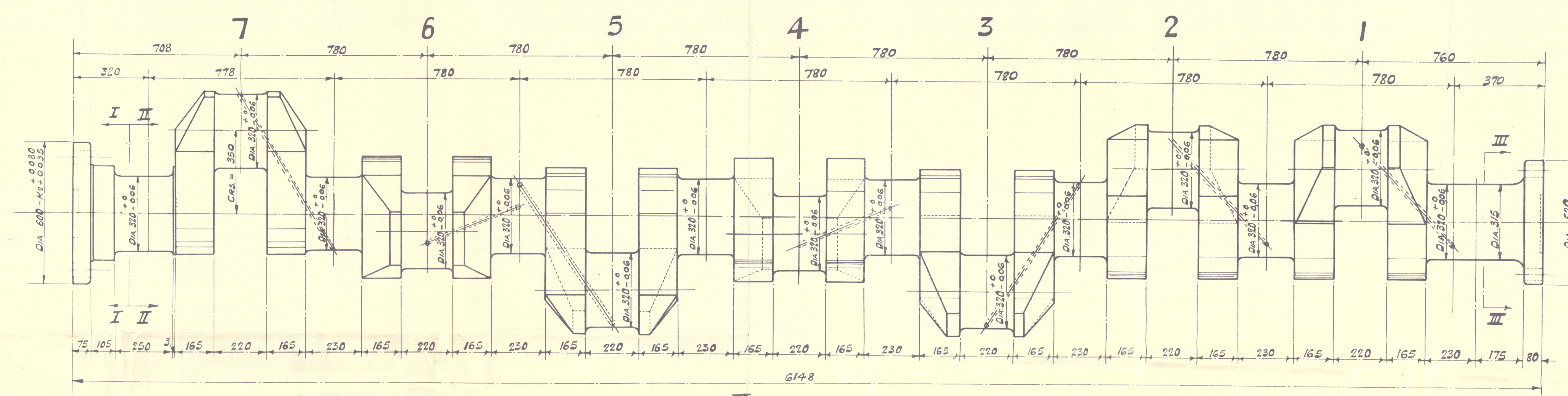
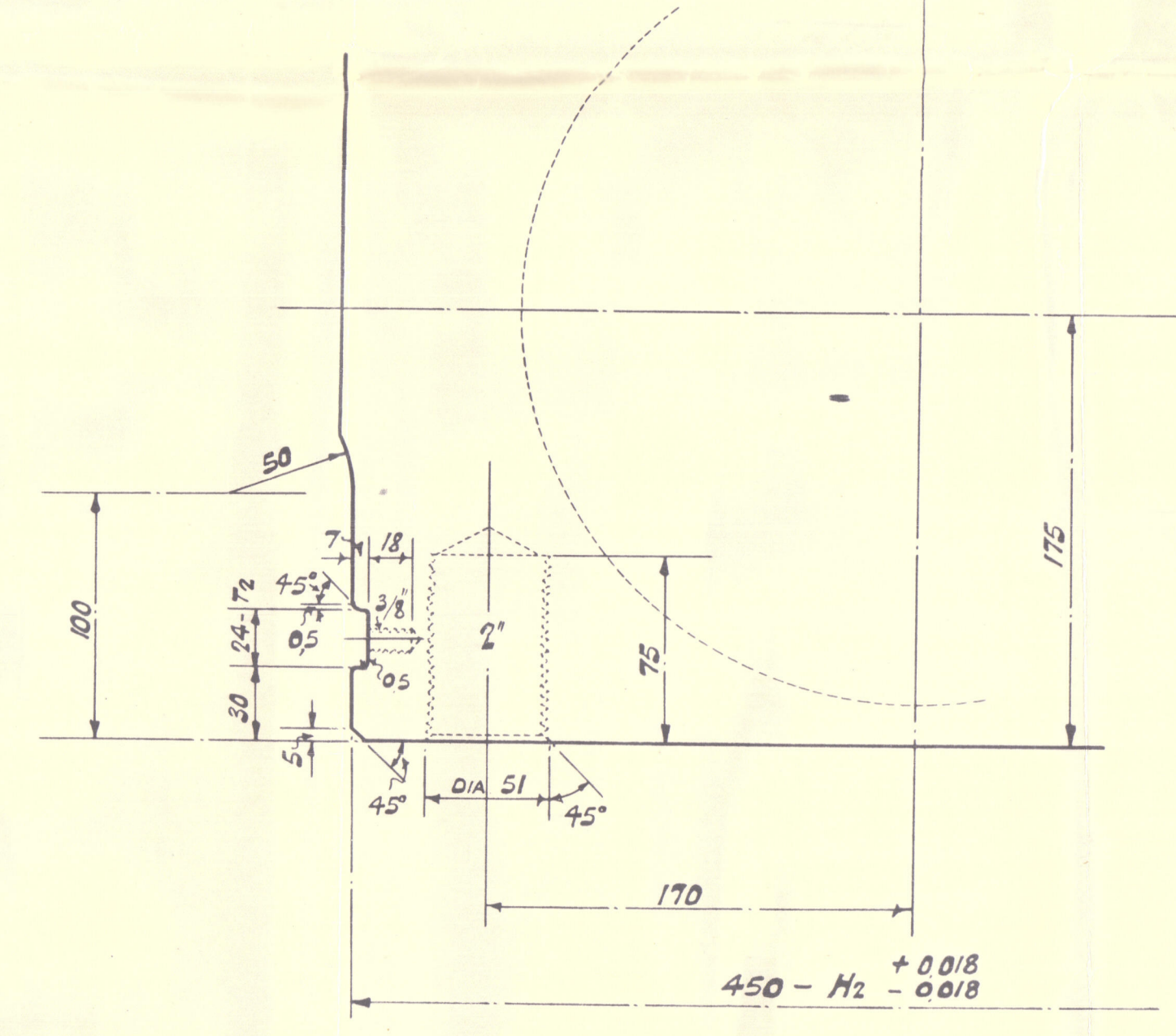


16 AUG 1938



DETAIL V



MATERIAL: SIEMENS MARTIN STEEL TENSILE STRENGTH 32-37 TONS PER SQ. INCH.

ELONGATION 29-25% ON TEST PIECE 0.564" x 2'

TO PASS BOARD OF TRADE AND LLOYD'S SURVEYS

MATERIAL LIST PER ENGINE

WEIGHT	MARK	Nº OFF	DESCRIPTION	MATERIAL	REMARKS	REF Nº	INDEX
	A	1	CRANKSHAFT	SIEMENS MARTIN STEEL	ORDERED OUTSIDE	787410	SR 14 5 <sup>B</sup>
		8	COUPLING BOLTS COMPLETE	-	ORD ON DES 3637	787413	
		12	" " " "	-	" " " "	787272	

PORT ENG. Nº 1083 (WORKING) BY SULZER BROS.

ONE SET REQD FOR STAR® ENG. Nº 1083 (WORKING) BY W. DENNY & BROS. LTD.

ONE COMPLETE SET OF COUPLING BOLTS FOR ENG. Nº 1083 (SPARE) " " " "

TO BE MACHINED TO SIZE BUT NOT HIGHLY FINISHED WHERE MARKED THUS Ⓢ

DRC. Nº 3647 787410.

T.S. 48. CRANKSHAFT. Nº 1083. SCALE 1:10, 5:2, 5:1.

COST Nº 1

W285-0131

PRINTS REQUIRED	
D.O.	
P.S.	
T.S.	
F.S.	
S.S.	
D.S.	
D.E.	
S.Y.	
B.M.S.	
D.B.M.	
GALV.	
D.B.S.	
TOOL RM.	
DIS. MAN.	
SURVEY	
OWNERS APP.	
SUPPLY	
PRICES	
CONT.	
OVERSEER	
CHIEF ENG.	
TOTAL	



(6)

Wm. Lenny & Bros

E. 1083

Yd. No. 1333

Crankschaft

1333 Princess Victoria

GLASGOW REPORT NO

61311



© 2021

Lloyd's Register  
Foundation

W 285-0131