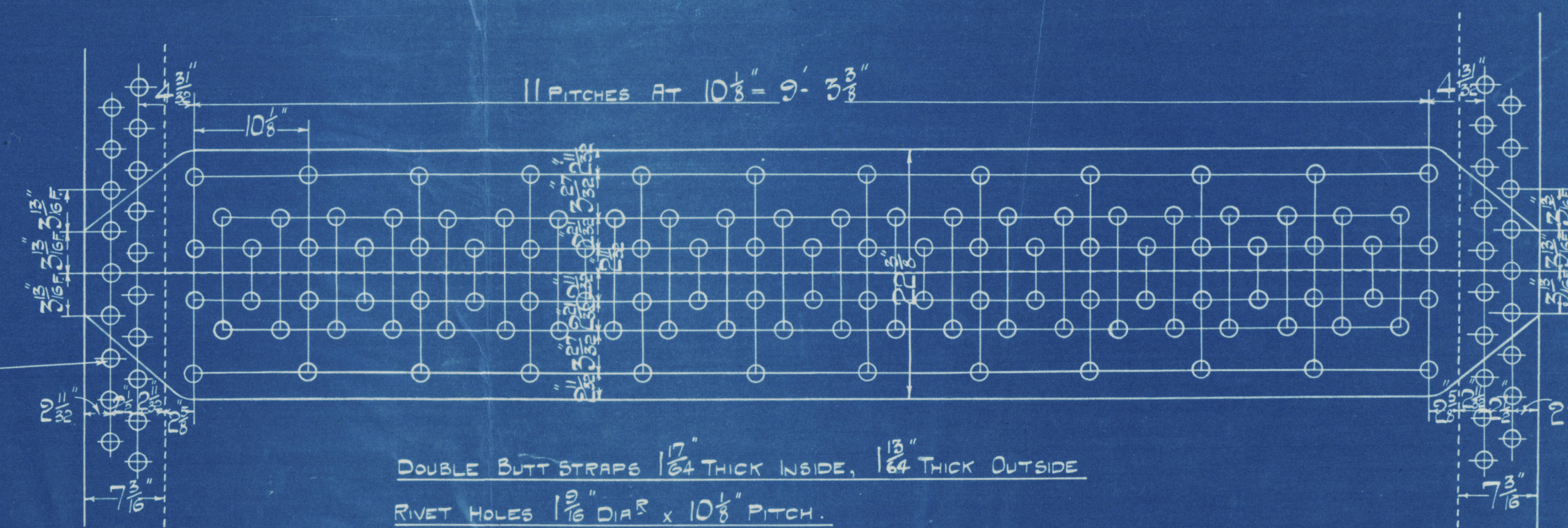
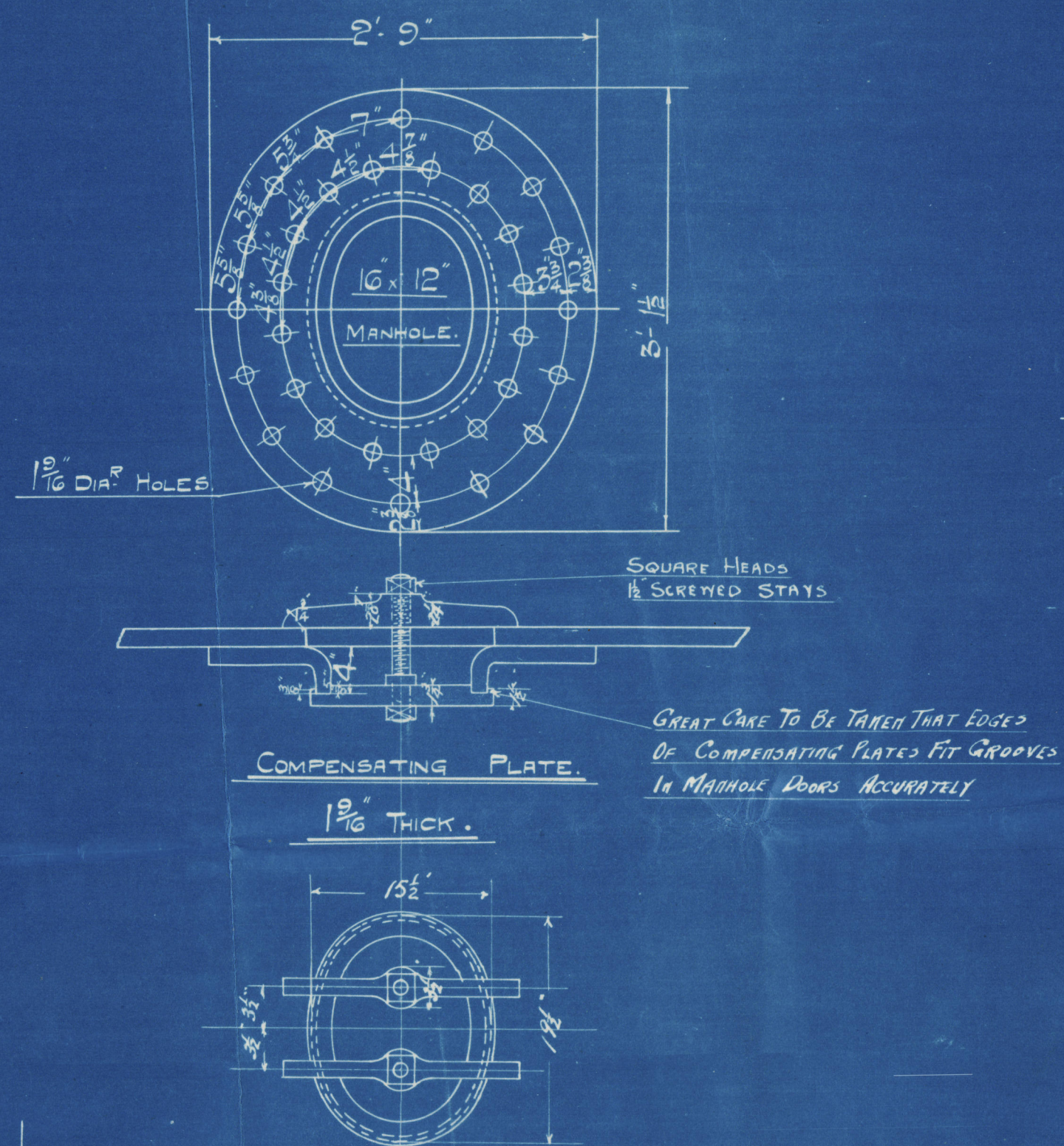
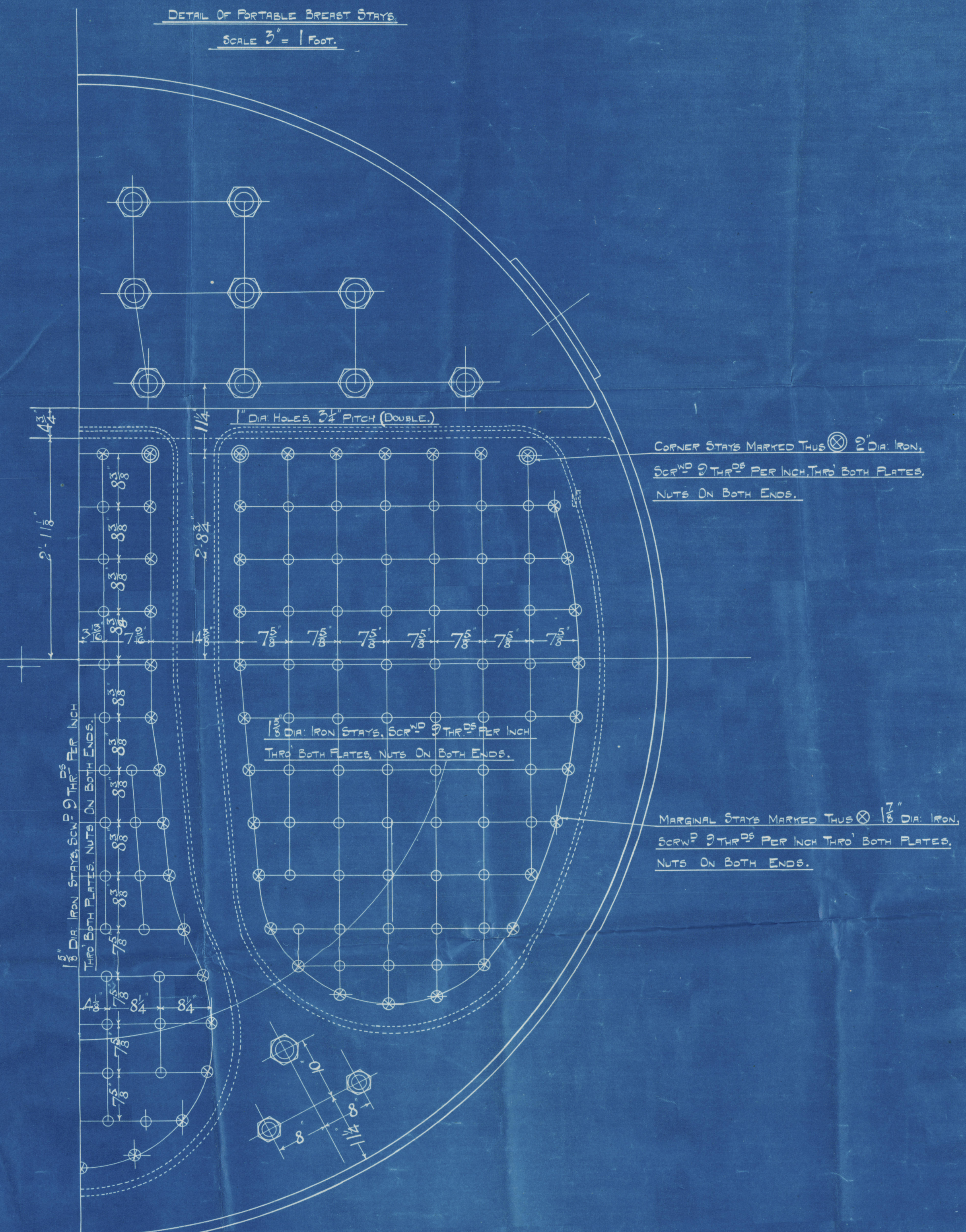
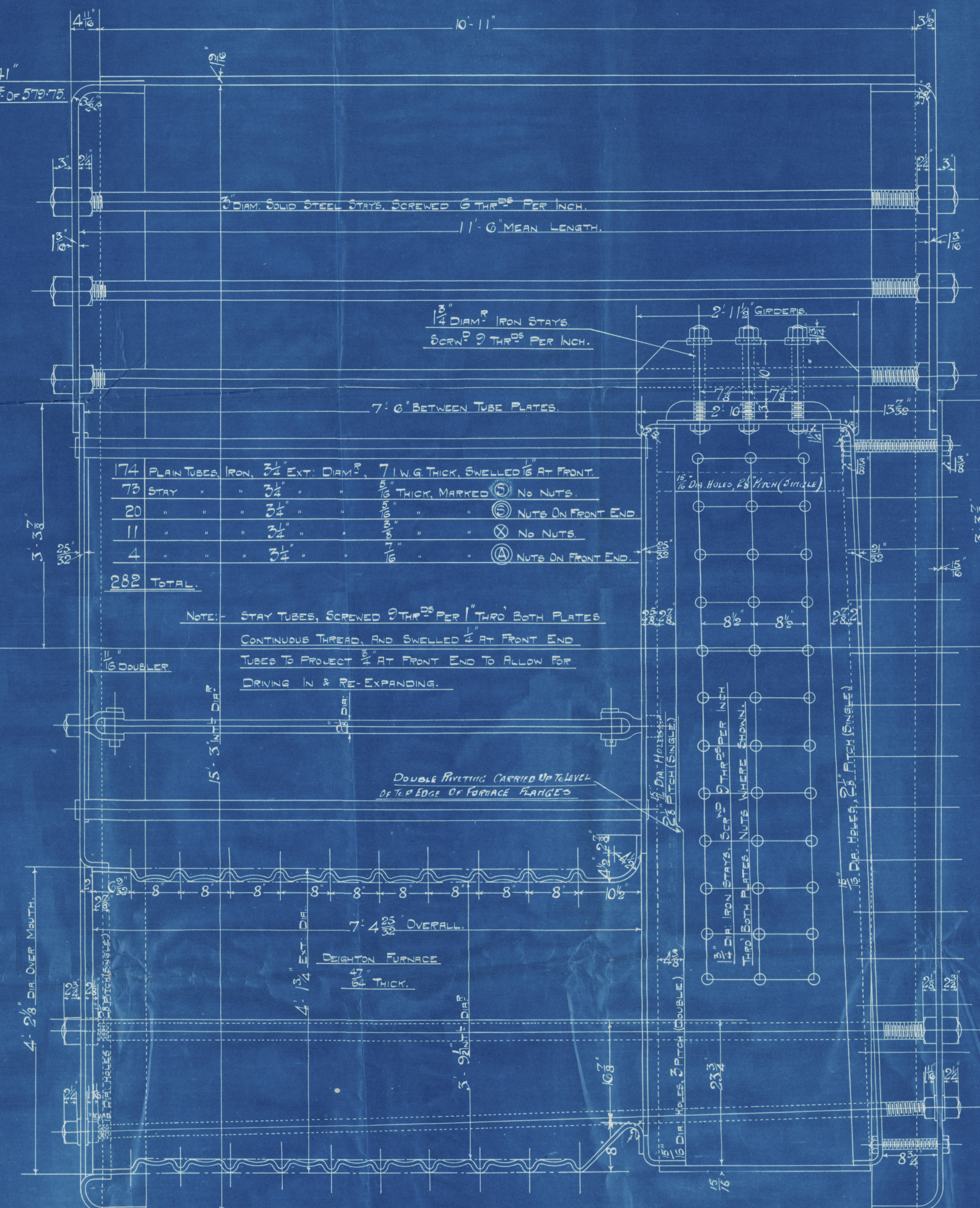
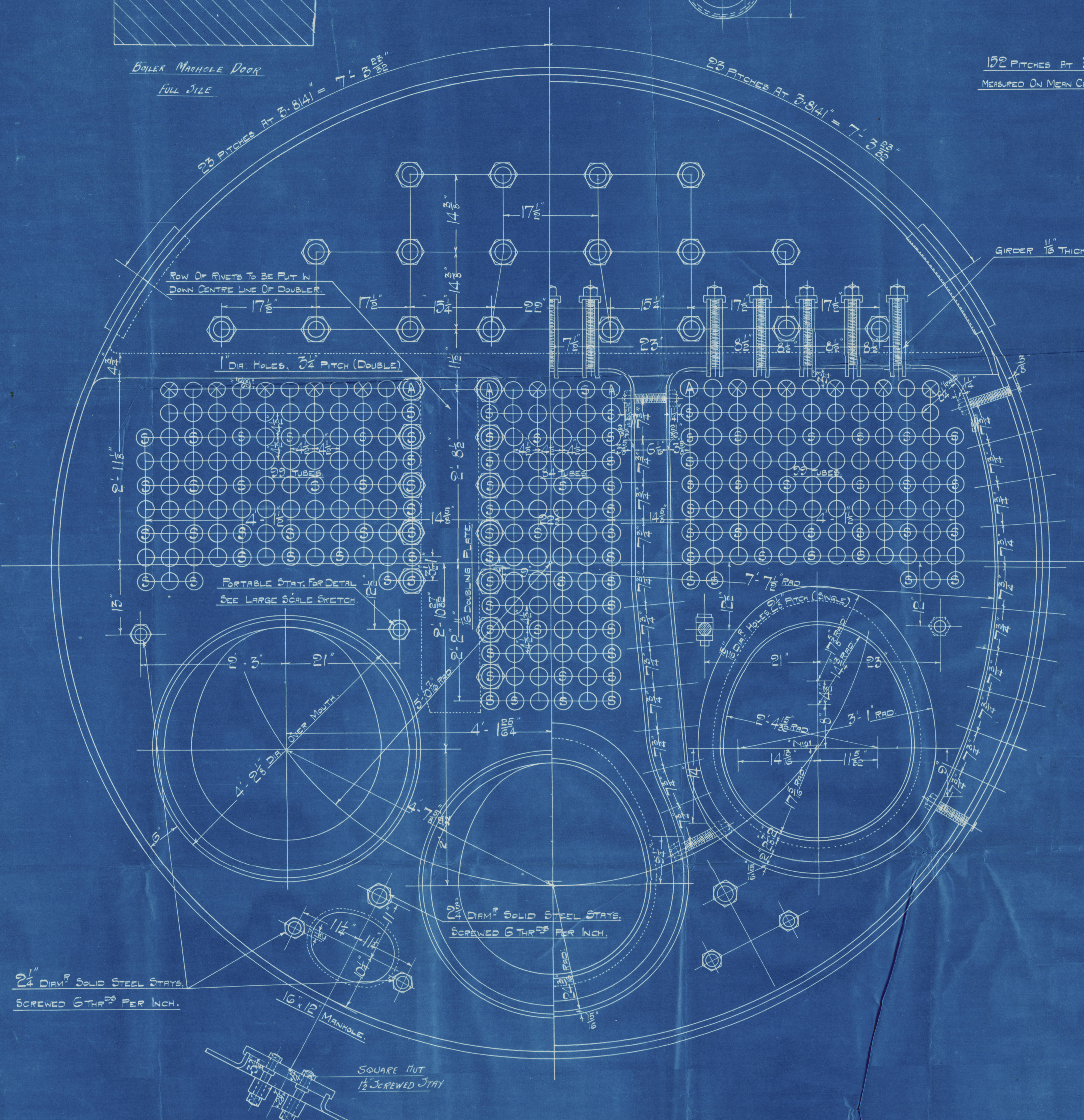
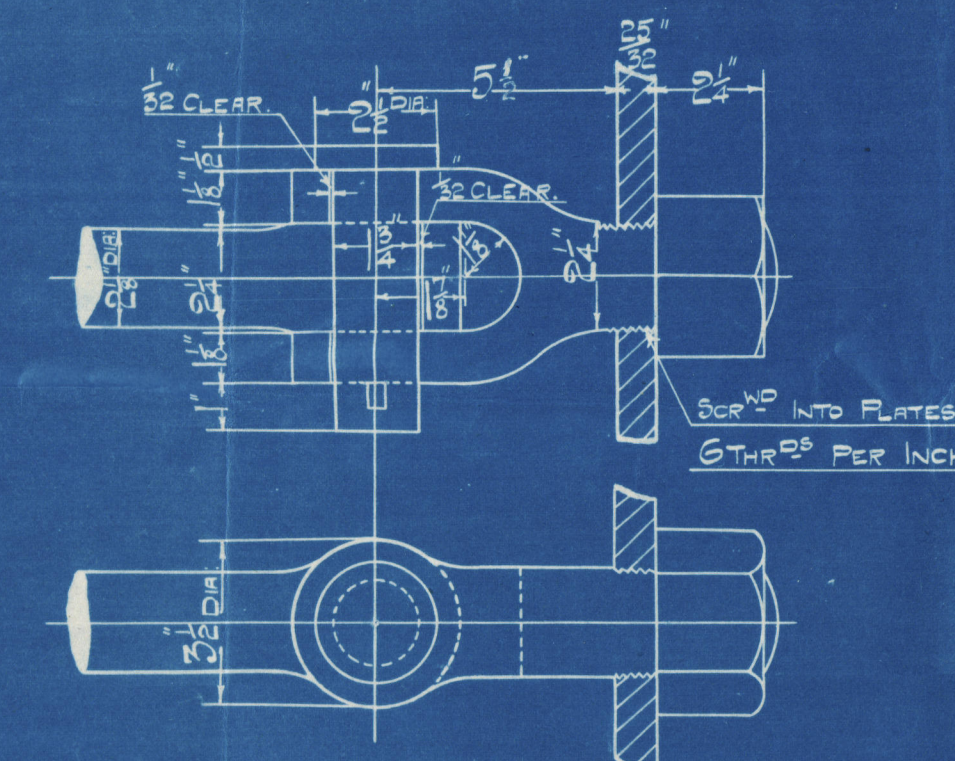


PARTICULARS OF BOILERS.		
	1 BOILER	2 BOILERS
HEATING SURFACE:		
TUBES	1800#	3400#
FURNACE	66#	428#
SPACES OF COMB. CHAMBERS	158#	474#
BACKS	25#	255#
BACK TUBE PLATE	44#	132#
TOTAL	2253#	6789#
DATA TWO TUBES	11-2253#	558605#
GRATE AREA (5' 6" FIREBAR)	62.56#	187.63#
RATIO	G.S. H.S.	26.01



TESTS OF MATERIAL.	
SHELL PLATES.	30 TO 34 TONS.
BUTT STRAPS.	30 " 34 "
COMPENSATING PLATE.	28 " 30 "
ALL COMB. CHAMBER PLATES.	26 " 30 "
ALL FLANGED PLATES.	26 " 30 "
MANHOLE DOORS.	28 " 32 "
GIRDER PLATES.	28 " 32 "
LONGIT. STAYS.	28 " 32 "
COMB. CHAMBER STAYS (IRON).	27 1/2 " 24 "



S. S. ENGINES No 540.

BOILERS.

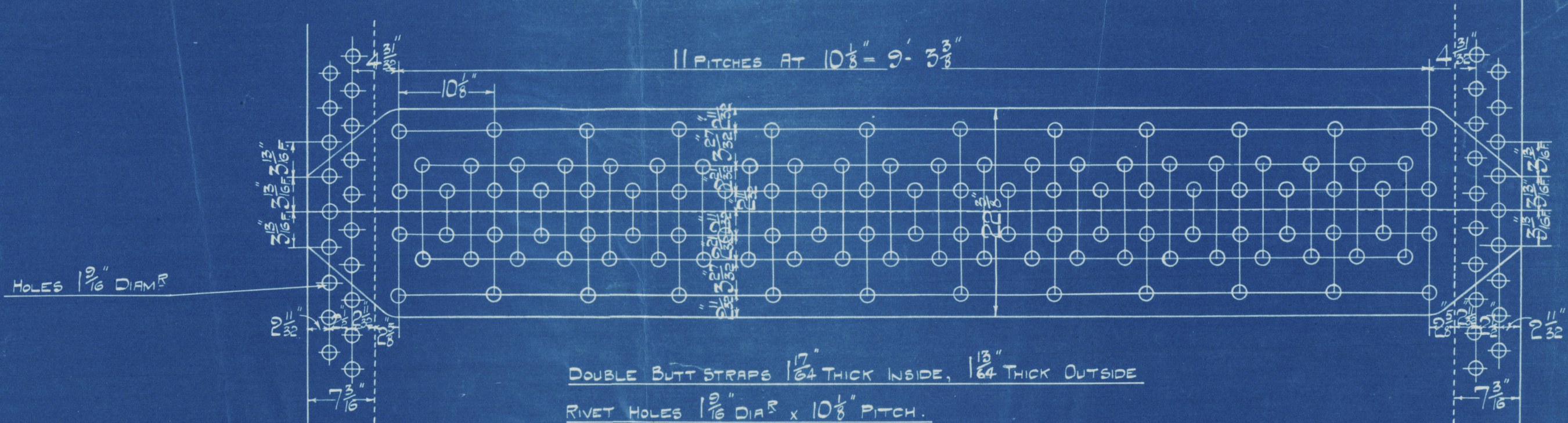
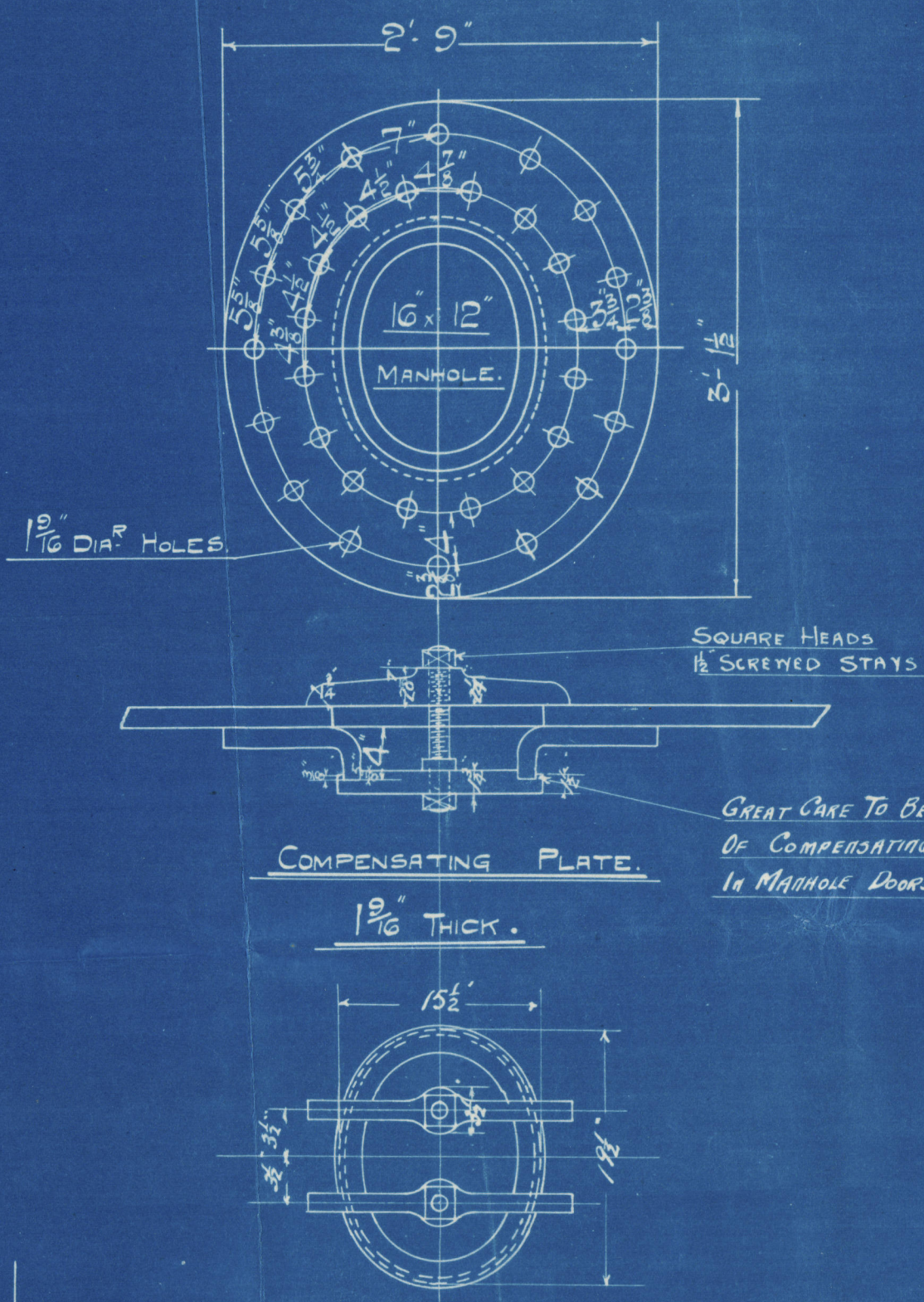
SCALE = 1" = 1 FOOT.



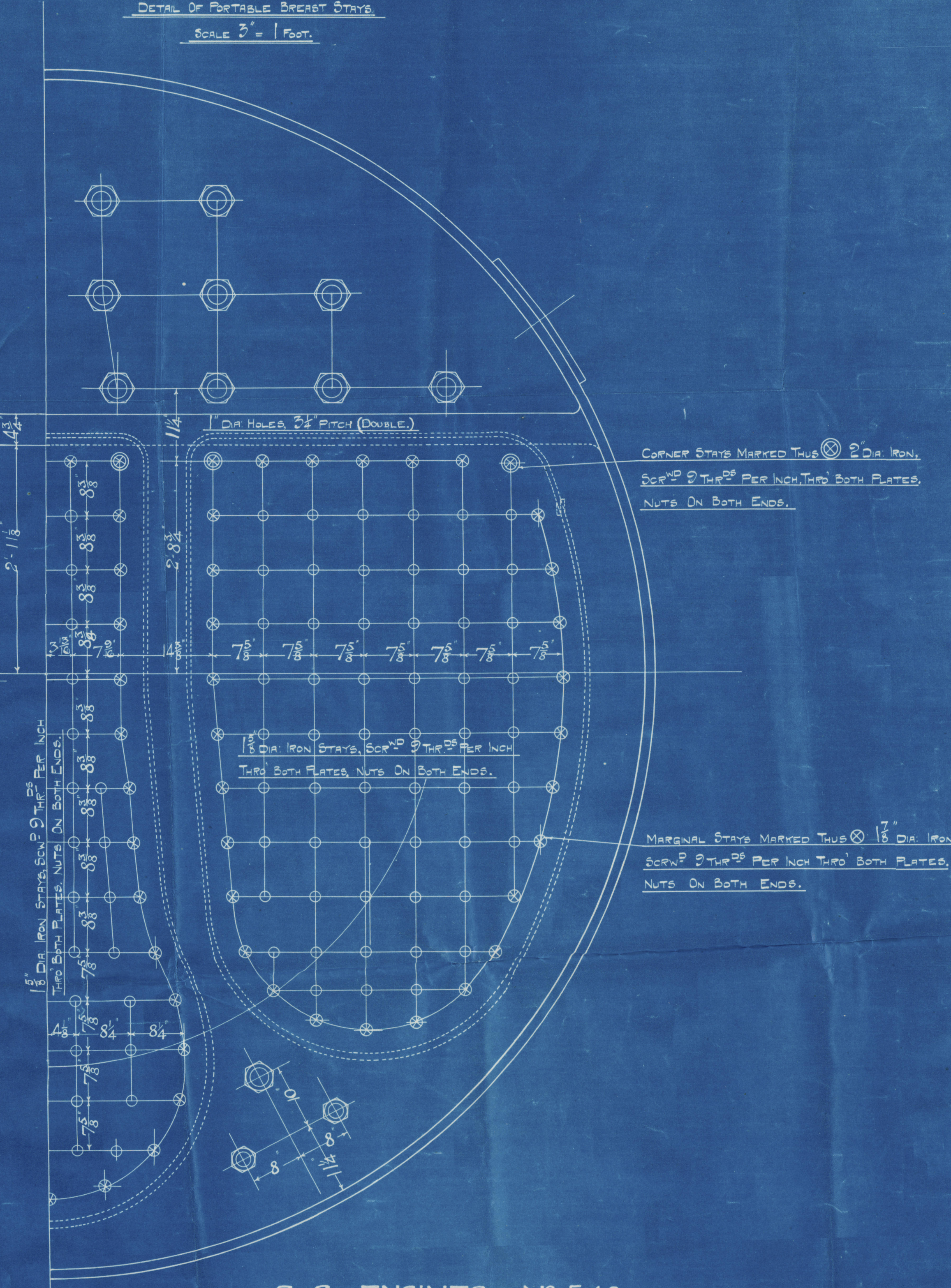
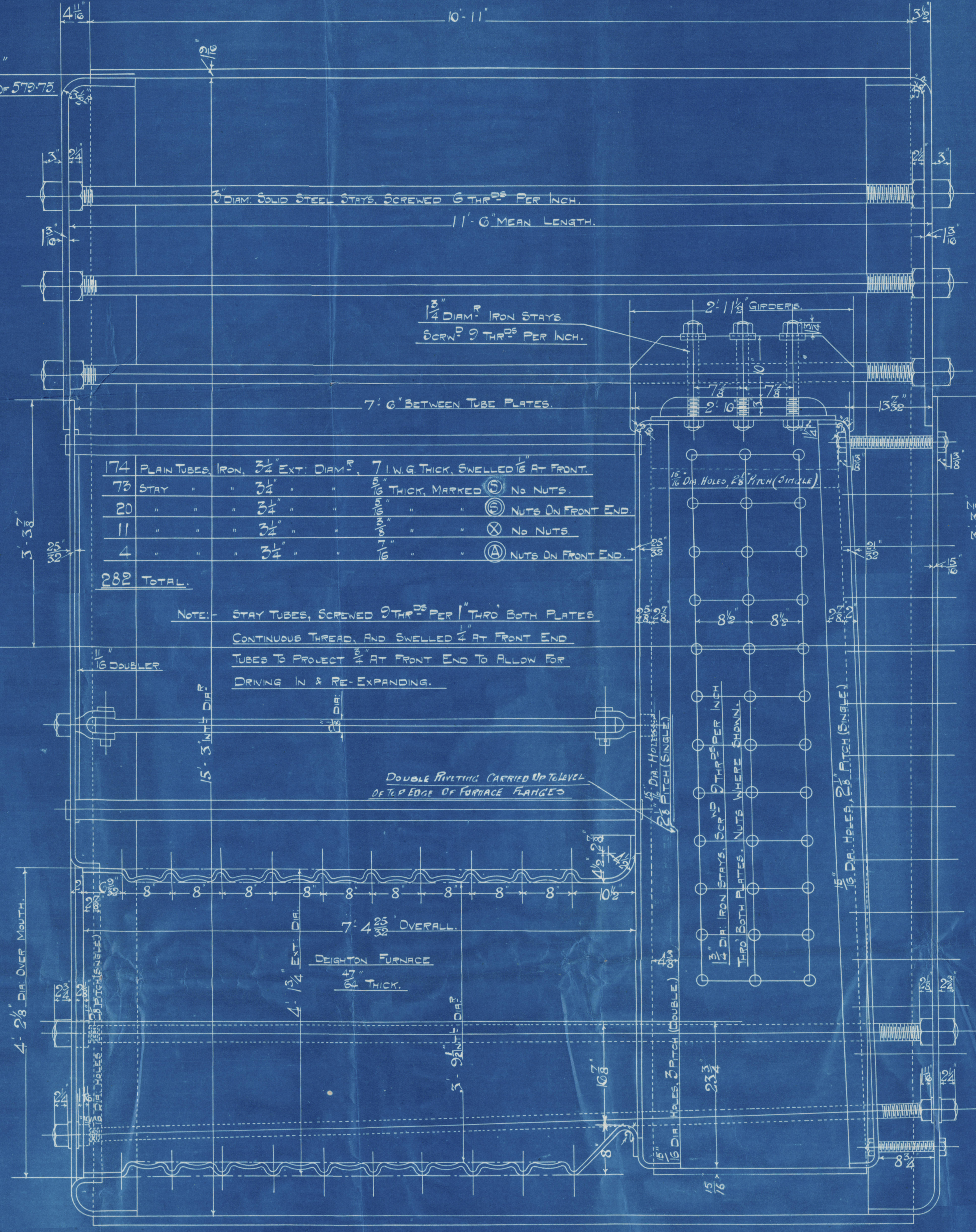
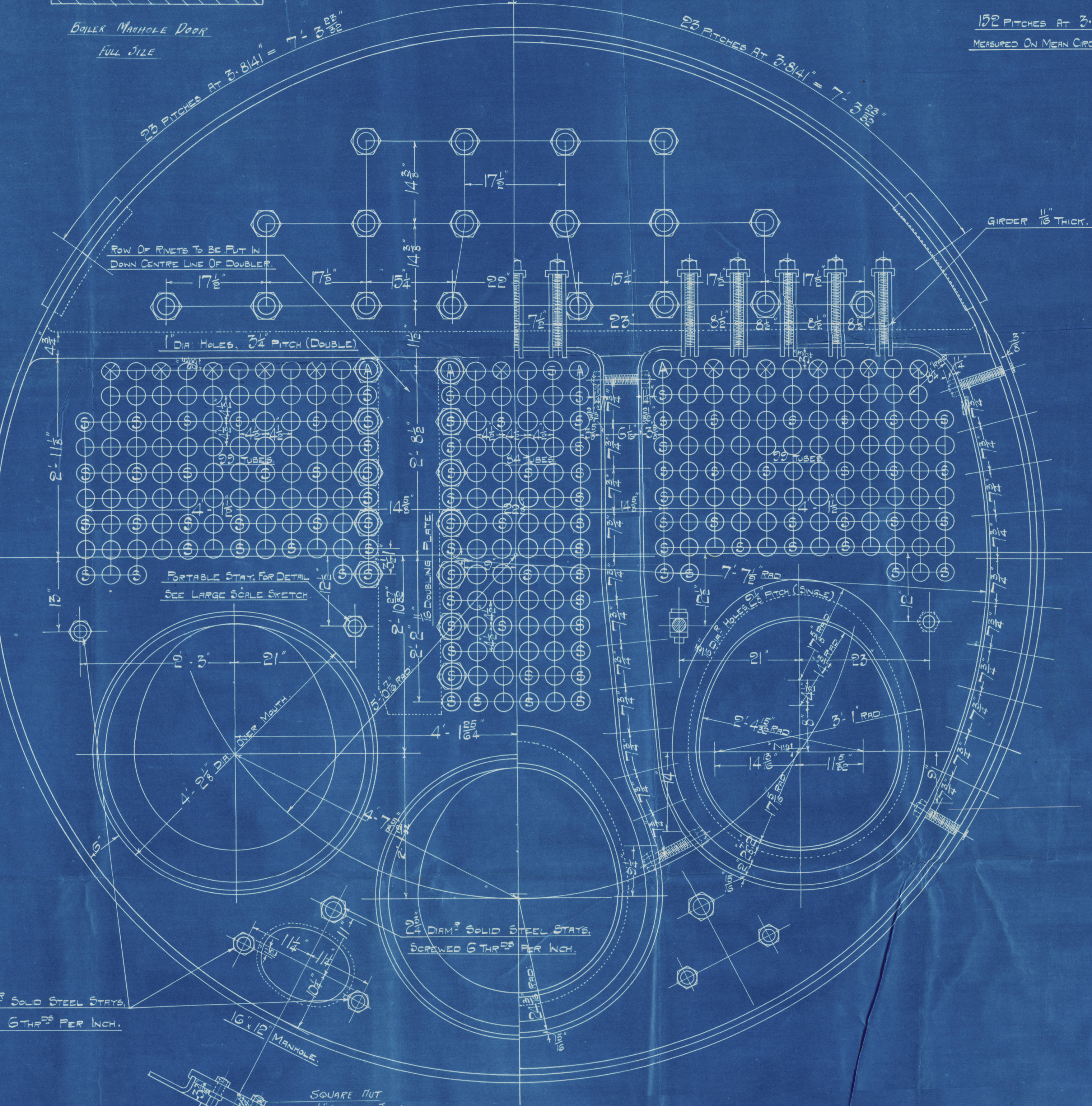
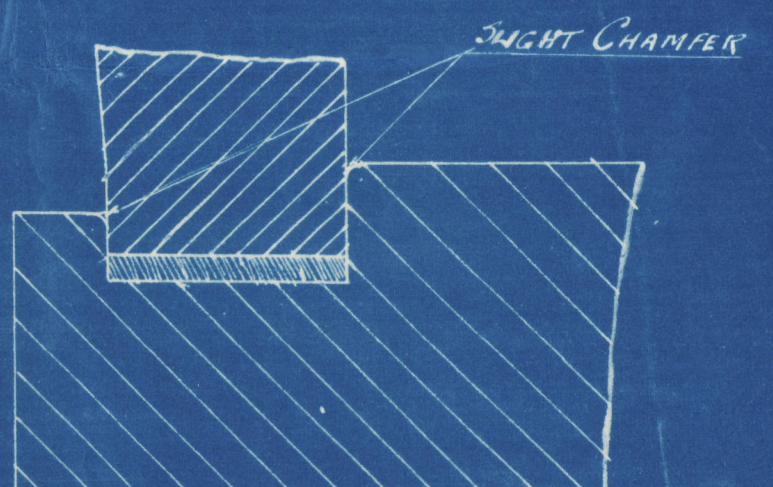
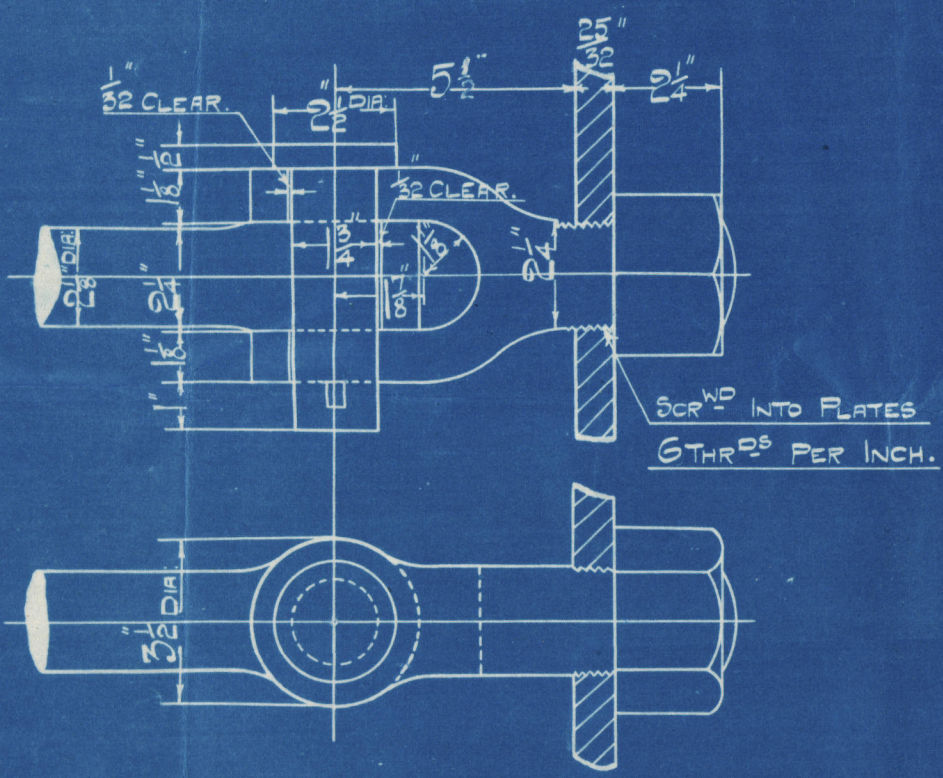
DRAWING No 31.
Lloyd's Register
Foundation

W284-0156

PARTICULARS OF BOILERS.		
HEATING SURFACE.		
TUBES.	1800#	5400#
FURNACE.	66#	426#
BACK OF COMB. CHAMBERS.	158#	474#
BACKS.	22#	252#
BACK TUBE PLATE.	44#	132#
TOTAL.	2250#	6750#
AREA TUBE TUBES.	1112530#	354600#
GRATE AREA (5' 6" SQUARE).	6256#	18768#
RATIO	G.S.	H.S. = 36.01



TESTS OF MATERIAL.	
SHELL PLATES.	20 TO 24 TONS.
BUTT STRAPS.	20 - 24 "
COMPENSATING PLATE.	26 - 30 "
ALL COMB. CHAMBER PLATES.	26 - 30 "
ALL FLANGED PLATES.	26 - 30 "
MANHOLE DOORS.	26 - 30 "
GIRDER PLATES.	26 - 30 "
LONGIT. STAYS.	28 - 30 "
COMB. CHAMBER STAYS (IRON.)	24 - 24 "



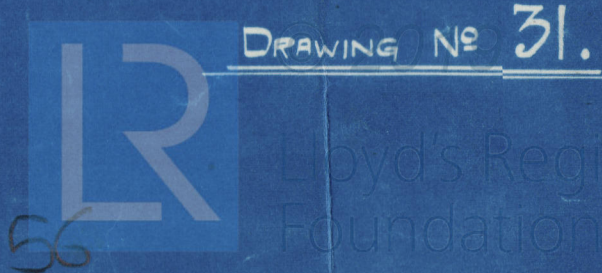
S. S. ENGINES N° 540.

BOILERS.

SCALE - 1" = 1' FOOT.



DRAWING N° 31.



W284-0156

Barclay Curle
No 540

Main Border

Duplicate print

GLASGOW REPORT No. 37679
7/3 Polycarp.



© 2019

Lloyd's Register
Foundation

W284-0156