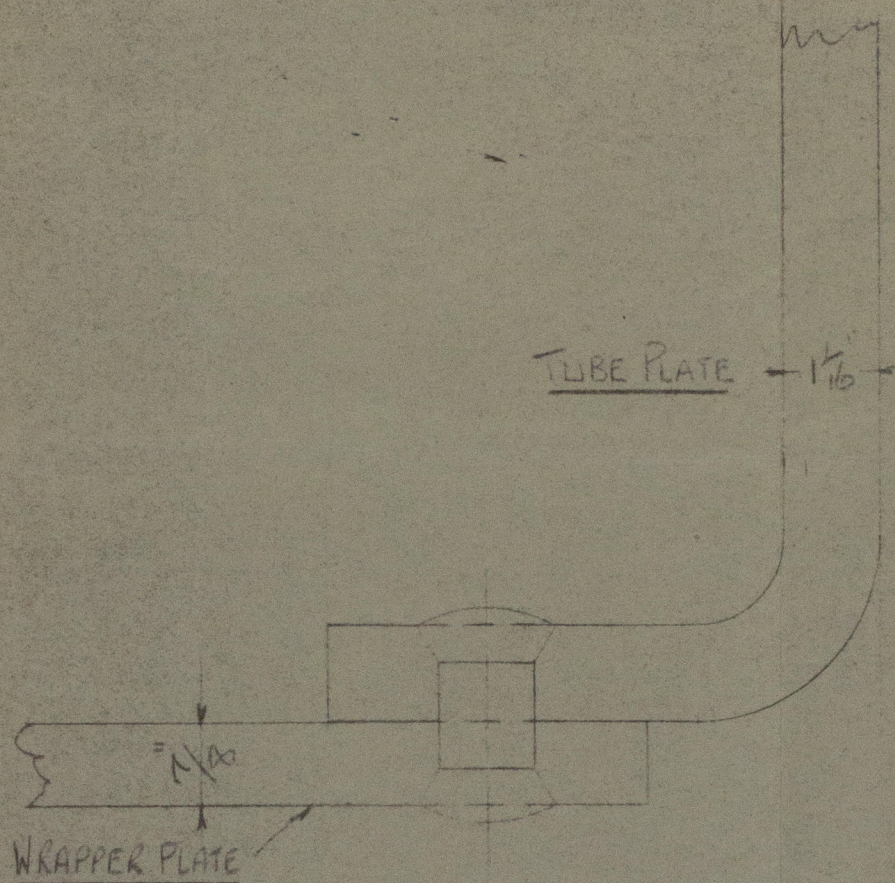
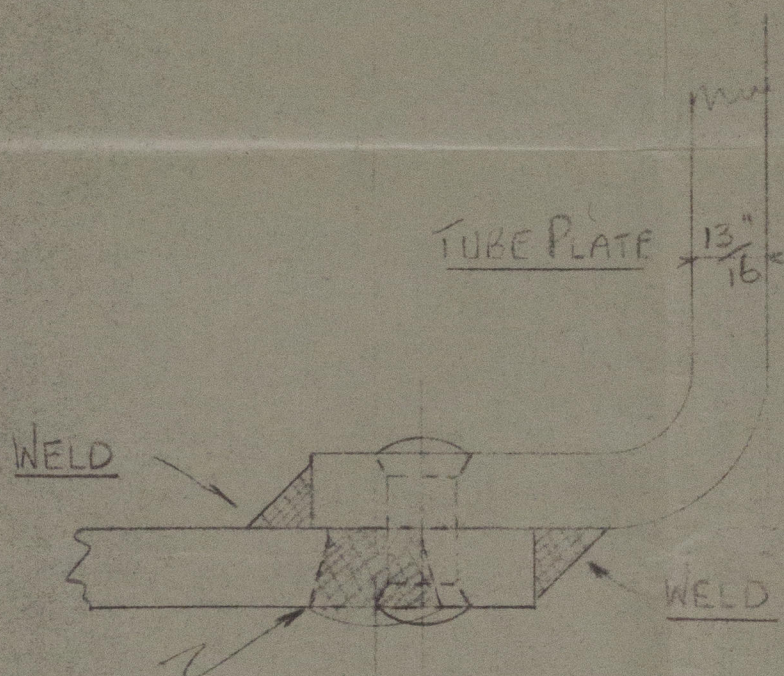


15 SEP 1953



SECTION THRD EXISTING JOINT

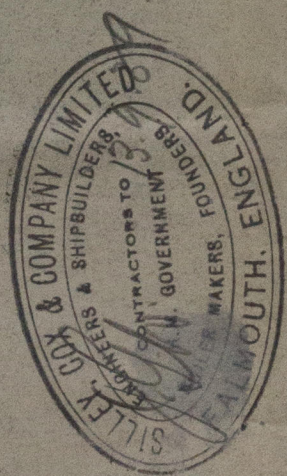
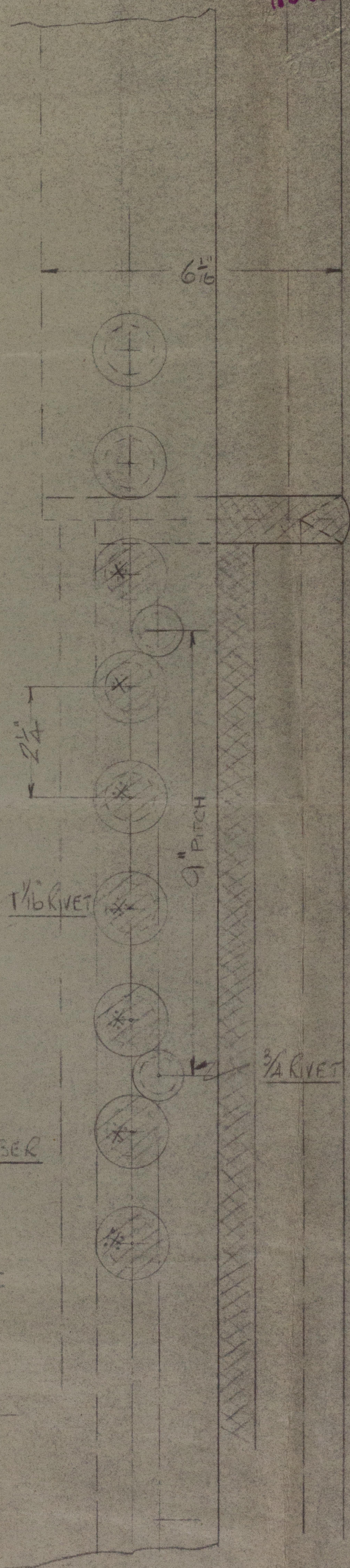


EXISTING RIVET HOLES IN WRAPPER PLATE 'X'  
TO BE WELDED UP SOLID FROM INSIDE CHAMBER

AND GROUND FLUSH

A SERIES OF 13/16 HOLES TO BE DRILLED  
THROUGH WRAPPER PLATE AND NEW TUBE  
PLATE FLANGE TO TAKE SERVICE BOLTS  
TO KEEP TUBE PLATE IN POSITION WHILST  
WELDING. PITCH OF HOLES TO BE 9" OR AS  
NECESSARY TO MAKE CLOSE JOINT.

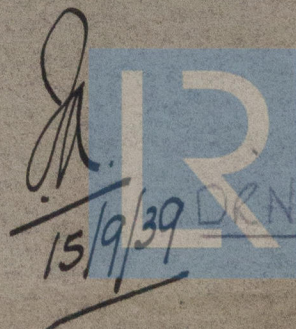
BOLTS TO BE REPLACED BY RIVETS AFTER  
TUBE PLATE IS WELDED IN PLACE



PROPOSALS RE TUBE PLATES.

S.S. 'MATAKANA'

HALF SIZE



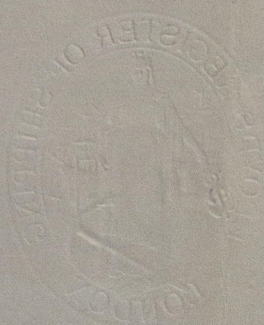
© 2019

Register  
Foundation

W284-0045



W284-0045



T.S.S. "MATAKANA"  
BOILER REPAIRS

---



© 2019

Lloyd's Register  
Foundation