

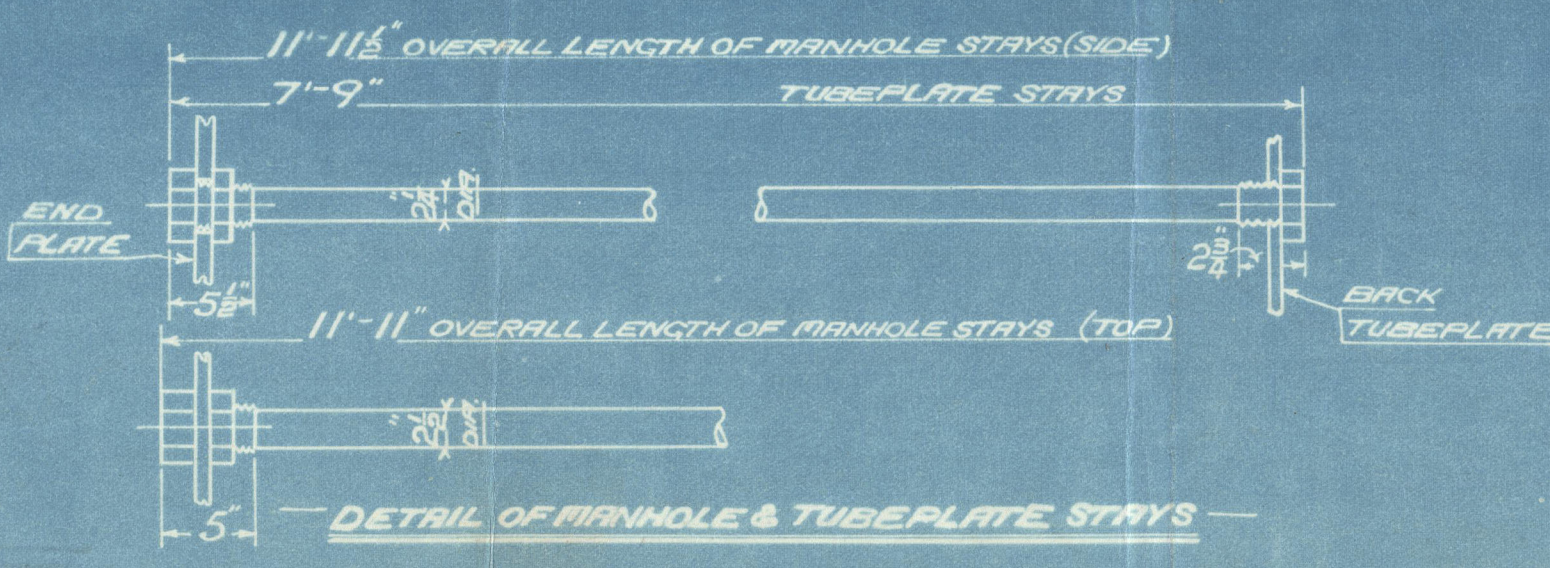
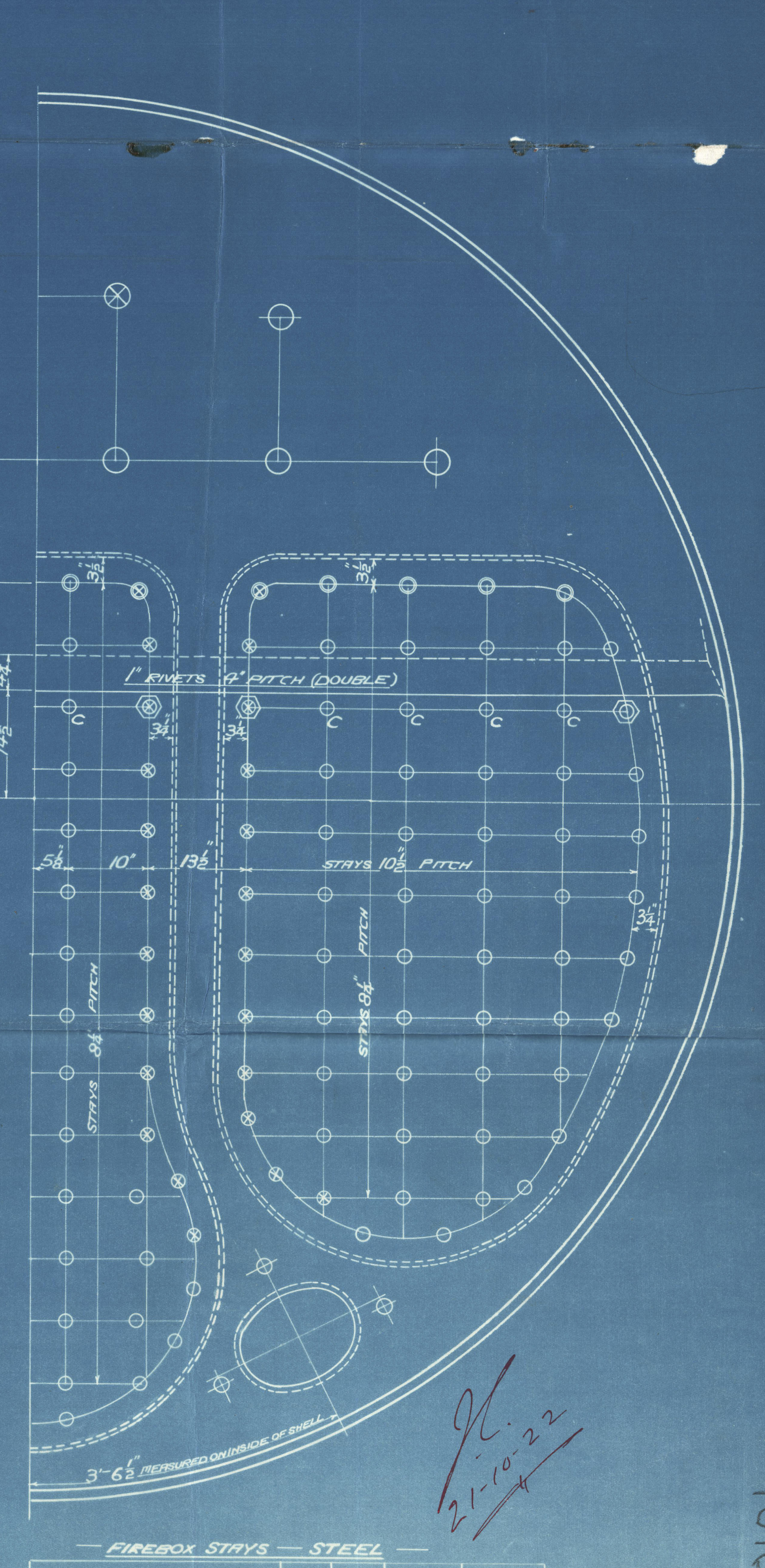
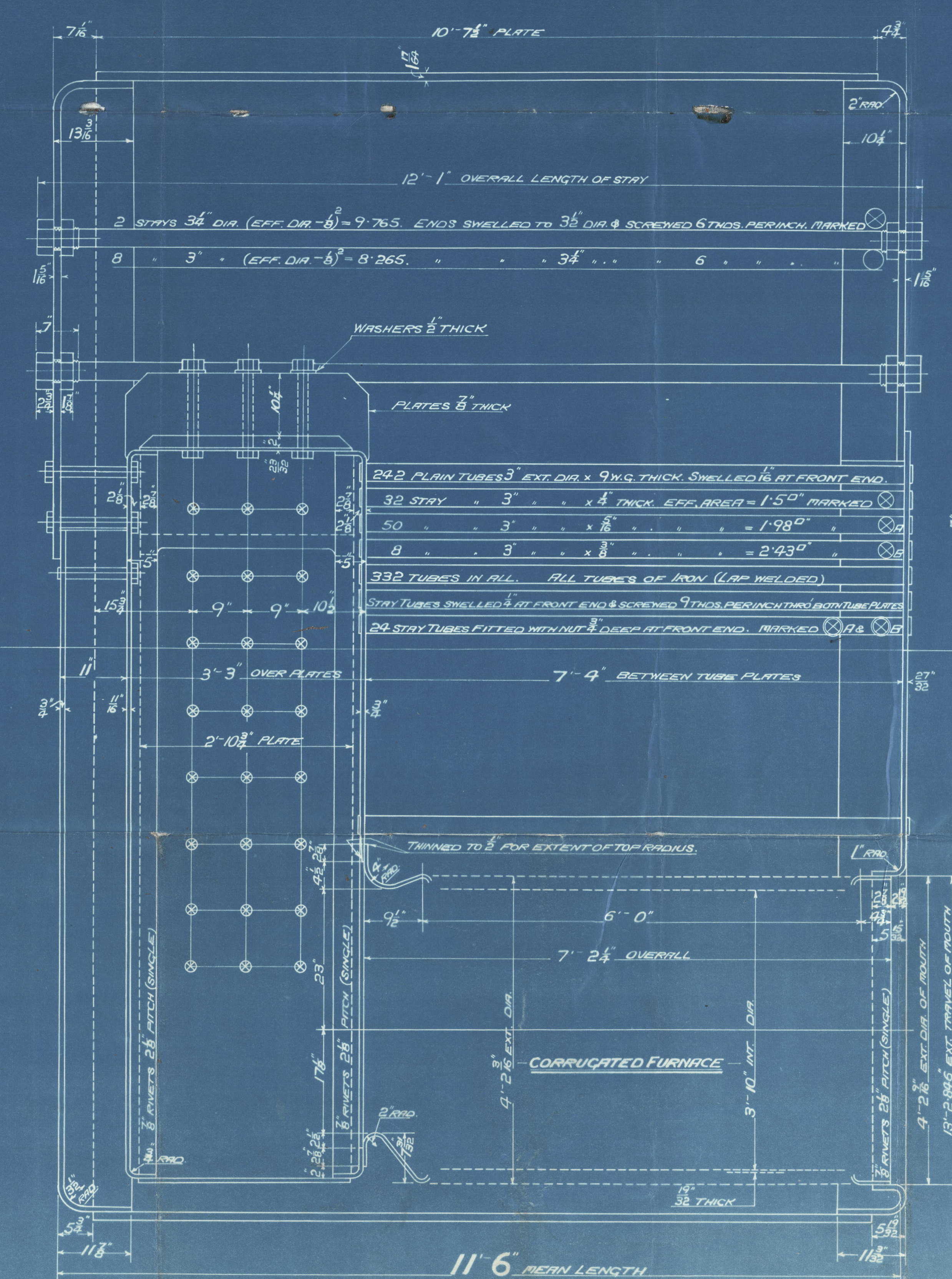
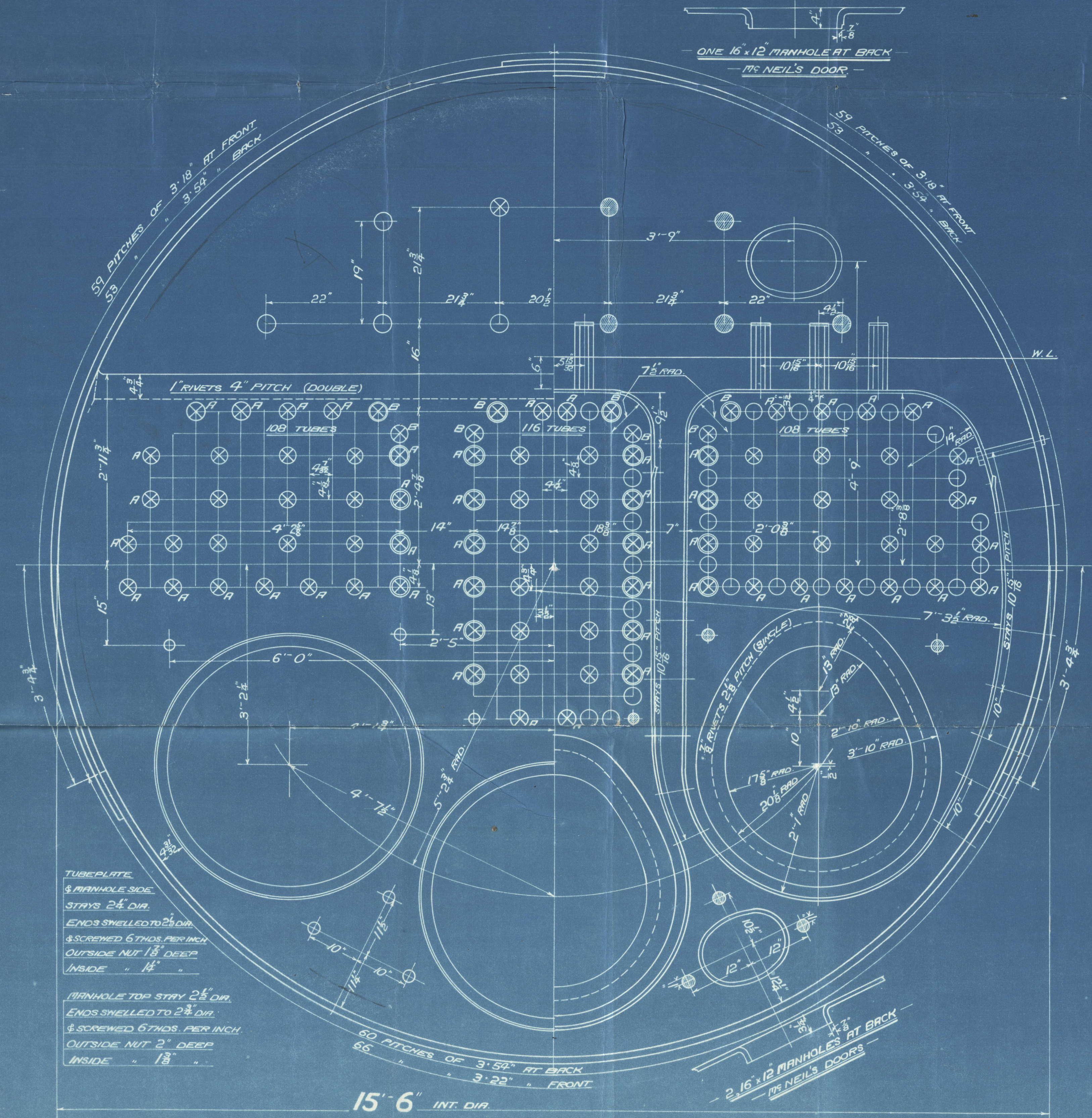
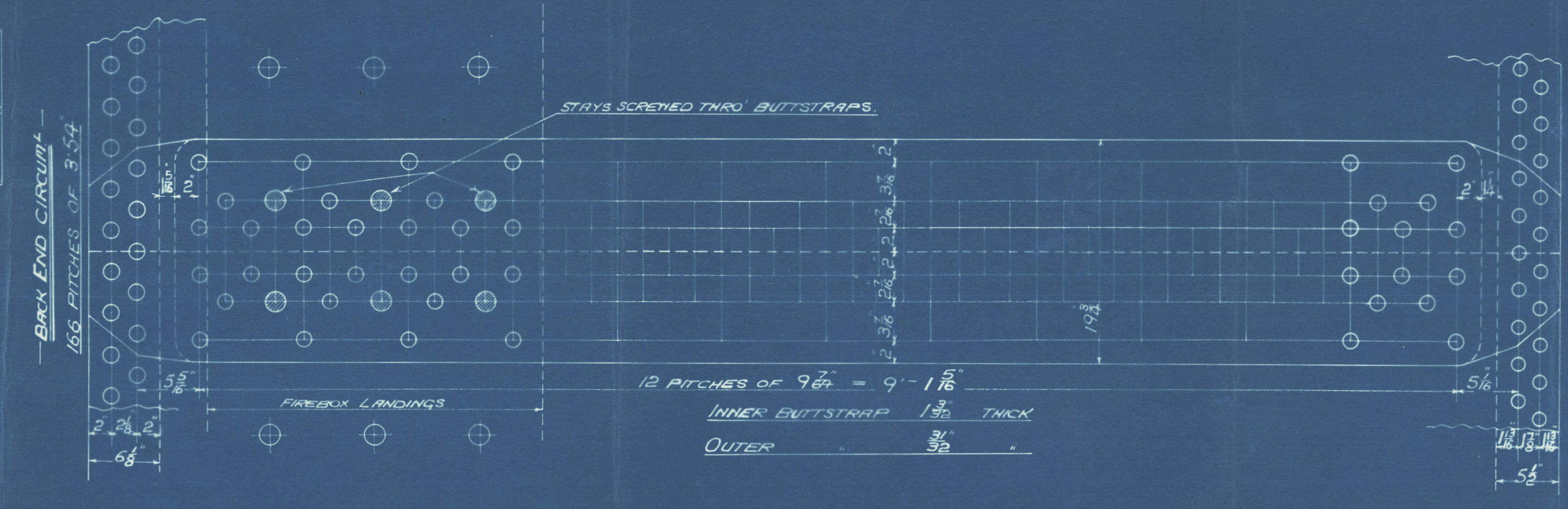
21.10.22

SURFACES		
TUBES	1910	5730
FIREBOX TOP AND SIDES	160	480
BACK	80	240
TUBEPLATE	51	153
FURNACES	155	465
TOTAL HEATING SURFACE	2356	7068
GRATE AREA (5' 6" BARS)	63.3	190
TUBE AREA	12.6	37.8
WATER	160	480
STEAM SPACE	514	1542
GRATE AREA HEATING SURFACE	1	37.2
TUBE	1	30.2
AREA	503	1
WATER	1	2.53
STEAM SPACE	1	8.1
% BOILER ABOVE FIREBOX	32.2	
WEIGHT OF WATER	26 TONS	78 TONS

LIMITS OF TENSILE STRENGTH & MATERIAL	
SHELL, BUTTSTRAPS AND GIRDERS	28 TO 32 TONS
OTHER PLATES	26 TO 30
FURNACES	26 TO 30
MAIN STAYS	28 TO 32
SCREWED STAYS	26 TO 30
RIVET BARS	26 TO 30

RIVETING		
LONG L	BACK END CIRCLES	FRONT END CIRCLES
RIVET HOLE DIA	1 1/8	1 1/8
PITCH	9 1/2	3 1/8 & 3 1/2
% PLATE	85.5	62.9
% RIVET	90.2	45.7

ALL RIVET HOLES DRILLED IN PLACE.  
MAIN STAYS SWELLED AT ENDS BY  
HYDRAULIC PRESSURE & ANNEALED.



**MAIN BOILER**  
- 3 OFF -  
**CONT. No 768**  
WORKING PRESSURE 180 LBS. PER SQUARE INCH.  
TEST 320  
TO PASS LLOYD'S SURVEY  
SCALE ONE INCH = ONE FOOT

FIREBOX STAYS - STEEL				
POSITION	MARK	DIA	(DIA - 26)	THICK
BACK	○	1 1/8	1.844	10
TOP SIDES & BACK WIDE SPACE	○	1 1/8	2.199	10
BACK TOP ROW	○	2"	3.003	10
BACK TOP CORNER	○	2 1/4	3.932	9

ALL FIREBOX STAYS SCREWED THRO' BOTH PLATES AND NOT FITTED AT EACH END EXCEPT STAYS FROM WING FIREBOX TO SHELL AND STAYS MARKED C IN BACK BOTTOM END WHICH PROJECT 8" AND ARE CAULKED. ALL 1 1/8" & 1 3/8" NUTS 8" DEEP EXCEPT ON GIRDERS TOPS WHERE TWO DEEP. NUTS ARE 1 1/2" DEEP. ALL 2" NUTS 1" DEEP. ALL 2 1/4" 1 1/2" DEEP.

O.T. 29359  
REGISTERED  
TRADED 13.10.22

W282-0101



From DAVID ROWAN & CO., Ltd., Glasgow.

ENCLOSURE

FOR MESSRS.

*Lloyds Register*

W282-010172

D. Howan No 768

3. SE Main Boilers

W.P. 180 lbs

Markon Boilers

Nº 768

Nº 16209

LLOYD'S TEST

320 lbs.

W.P. 180 lbs.

H.C. 16.3.23

GLASGOW REPORT No

43347

"Gretaeton"

Grk 18164.

W282-0101 2/2

© 2020



Lloyd's Register  
Foundation