



22.5.06
1.11.06

MIDSHIP SECTION

S.S. No 272

SCALE 1/2" = ONE FOOT

LENGTH B.P. 236'-6" BREADTH M¹ 32'-0" DEPTH M¹ 16'-2"
TO CLASS 100 A.1. AT LLOYD'S.

NOTE: SCANTLING ARE INTENDED TO BE THE MINIMUM
THE VESSEL NOT TO HAVE FULL FORM DISPLACEMENT COEFF. '67

NUMERALS

HALF GIRTH	29.25
HALF BREADTH	16.00
DEPTH	16.18
	67.068 / 17.17
	235.25
	14544 / 2.00

EQUIPMENT

2 BOWER ANCHORS 25% COTS STOCKLESS	
1 " 2R	
1 STEARM 6 1/2	5% STOCK
1 HEDGE 3 1/2	
210 FATHOMS 1 1/2" STUD CHAIN CABLE	
75 " 1 1/2" STEARM CHAIN OR 3/4" STEEL WIRE	
90 " 10" MANILA TOW LINE OR 3/4"	
90 " 6" HANSEY OR 2 1/4"	
90 " 5" " 1 3/4"	

PROPORTIONS

DEPTH TO LENGTH	13.99
BREADTH TO LENGTH	7.35

EQUIPMENT (N^o = 16297)

HATCH COARINGS 8/20

COMPLETE HATCH COARINGS BUTTS BUL. RY.
FOR 2 1/2" SINGLE AT ENDS
LOC 3.3.7/20

7 1/4" CAMBER

MAIN DE BEAMS 5.3.7/20 Spaced 25" apart
THREE UNDER 2 1/2" 5.3.7/20 Avg
HATCH END BEAMS 8 1/2" 5.3.7/20 B.A.

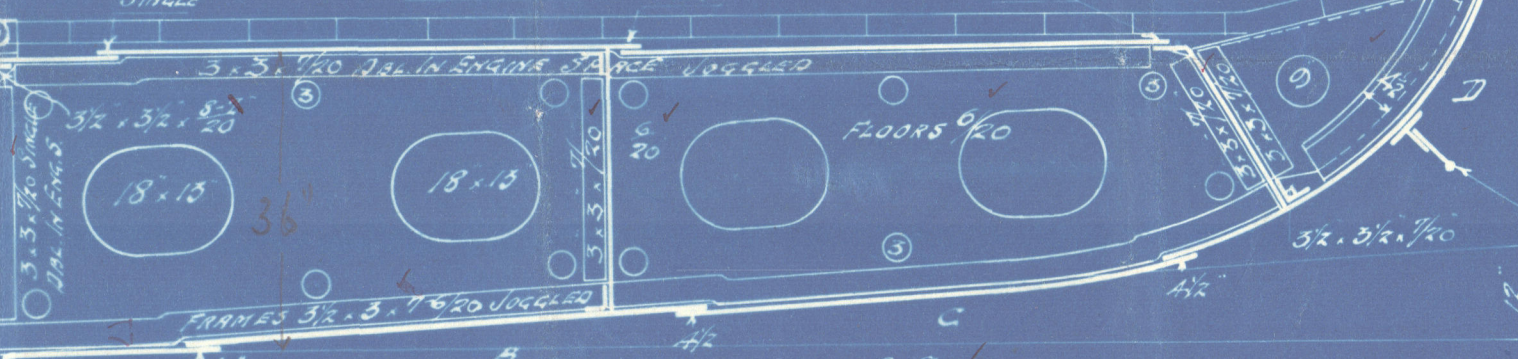
FRAMES SPACED 25" APART

6.3.7/20 B.A. IN WAY OF CELLULAR DOUBLE BOTTOM INCREASED STIFFNESS OF HATCH.
PATERNALE FRAMES 4.3.7/20 B.A. IN WAY OF HATCH.
WITH 1.3.7/20 B.A. BETWEEN.
SPRINGS 4.3.7/20 Avg. WITH RET. BAR 5.3.7/20 Avg.
DURING 6" GIRDERS IN WAY OF ORDNANCE FLOORS.
RET. BAR TO EXTEND TO MAIN DE STR.
SPRINGS IN BEAMS 4.3.7/20 Avg. WITH RET. BAR 3.3.7/20
EXTENDING TO MAIN DE SPRINGER.
4" STR. BELOW ALTERNATELY IN FORE & AFTER PERNS.
BUL. END FRAMES 4 1/2" 4.2.20 SINGLE. HATCH FRAMES 5 1/2" 5.2.7/20
BUL. BEAMS 9/20 Spaced 6.3.7/20 B.A. SPACED 30" APART. 16
OR SEMI-BOX BEAMS
FOR ORDNANCE STAFF & ORDNANCE FLOORS 18" 8/20 TO 7/20.
END FLOORS 7/20 STEEL 1 1/2" 2 1/2" STIFFENING 7 1/2" 2 1/2"
READER HEND 5 1/2" IN MAIN PLATE AT HATCH END. PATENT 2 1/2"
IN HATCH END.

TANK TOP CENTRE
STRINGS 3 1/2" 8/20
BUTTS DOUBLE RIVETED

TANK TOP PLATING IN HULLS 7/20 AND 9/20
END SPACE 7/20 IN HULLS
BUTTS DOUBLE RIVETED

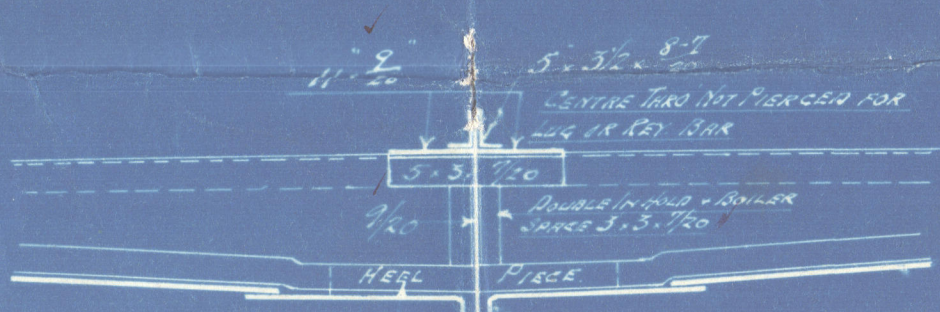
TANK ARCHER 9/20
PLATED 3" IN LEE
OF RET. BAR



18" 10" 38"
FLOORS 9/20
FRAMES 3 1/2" 8/20 DOUBLE
A 5 1/4" 7.8 1 20
GARRONING STRINGS
3 1/2" 8/20
45 1/4"

Longitudinal strength at junctions
of two systems of bottom framing
to be maintained to the
satisfaction of the surveyor

SECTION TANK BOWLER ROOM FLOORS & FORE HOLD FLOORS



HEEL PLATES FOR 3 1/2"
4.3.7/20 TURN INTO
CENTRE KEELSON

PAUL TRENCH'S PATENT
SECTION 10" 2 1/2"

BULKHEAD 7/20

SHEERSTRAKE 38" 11-1/2 20
DOUBLED AS PER PROFILE
G + 10" FROM WITHIN BRIDGE
FOR 1/2 LENGTH = 15 20 Double
butts

7-8 + 1 20 FROM WITHIN BRIDGE
FOR 1/2 LENGTH = 18 20

5 1/2" 10-8 20 CONVER

5 1/2"

BULKHEAD END 7 1/2 9/20
TEE BAR 6" 4" 8/20

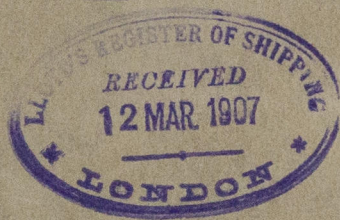
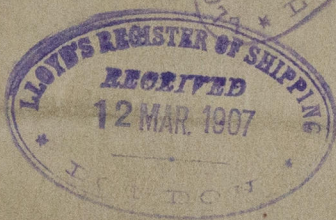
TANK MARGIN PLATE 2 1/2" 7/20 7/20 IN A.S.
20 1/2" AT FORE END. 14 1/2" AT AFT END.
BUTTS DOUBLE RIVETED.

22.5.06



Midship Section.
Gyde SB Reng Co.

No 272
Suzg ex Douglas
J.P. Douglas.
Lph report N: 184989



Ital 42684



© 2021

W281-0101

Lloyd's Register
Foundation