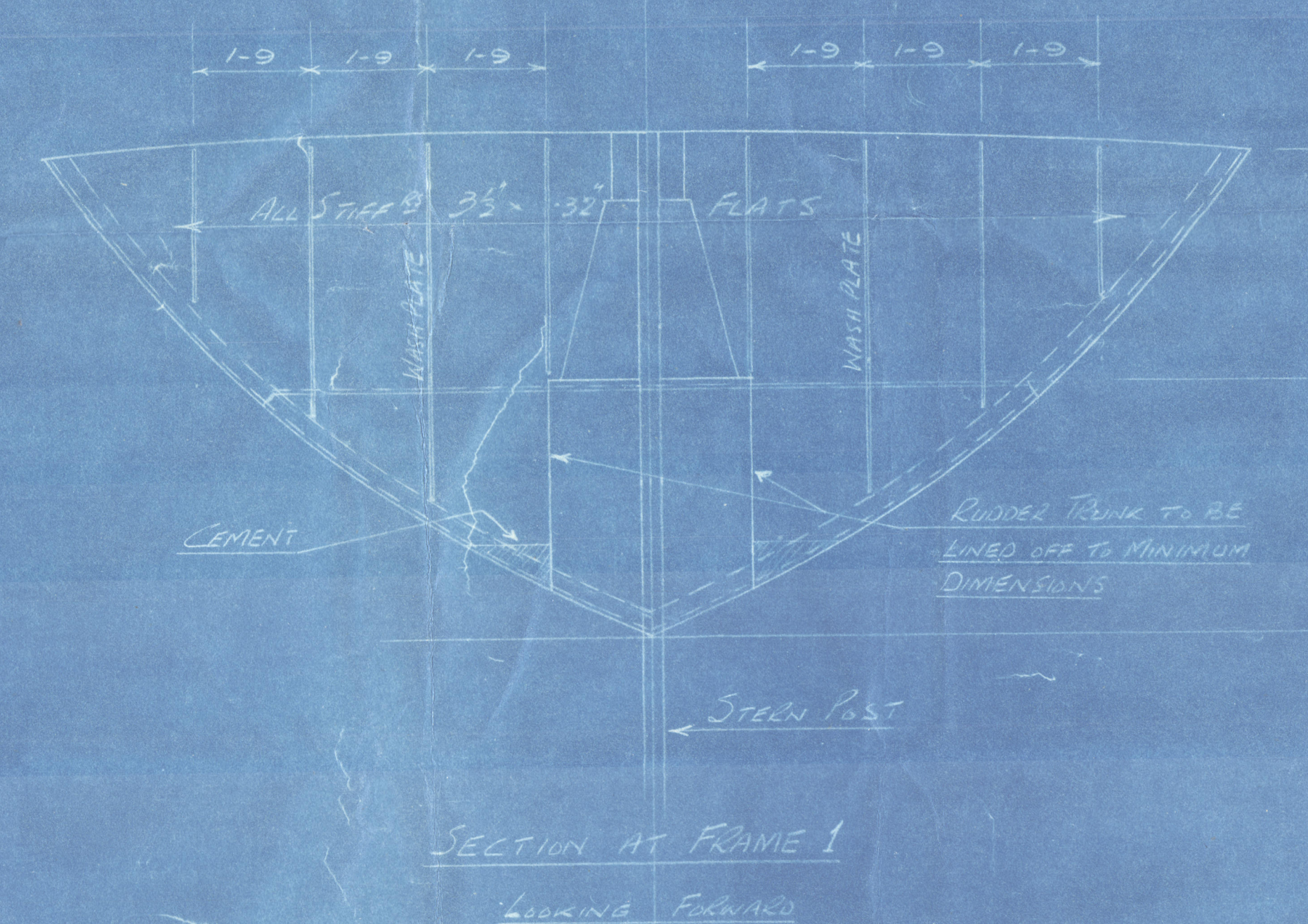
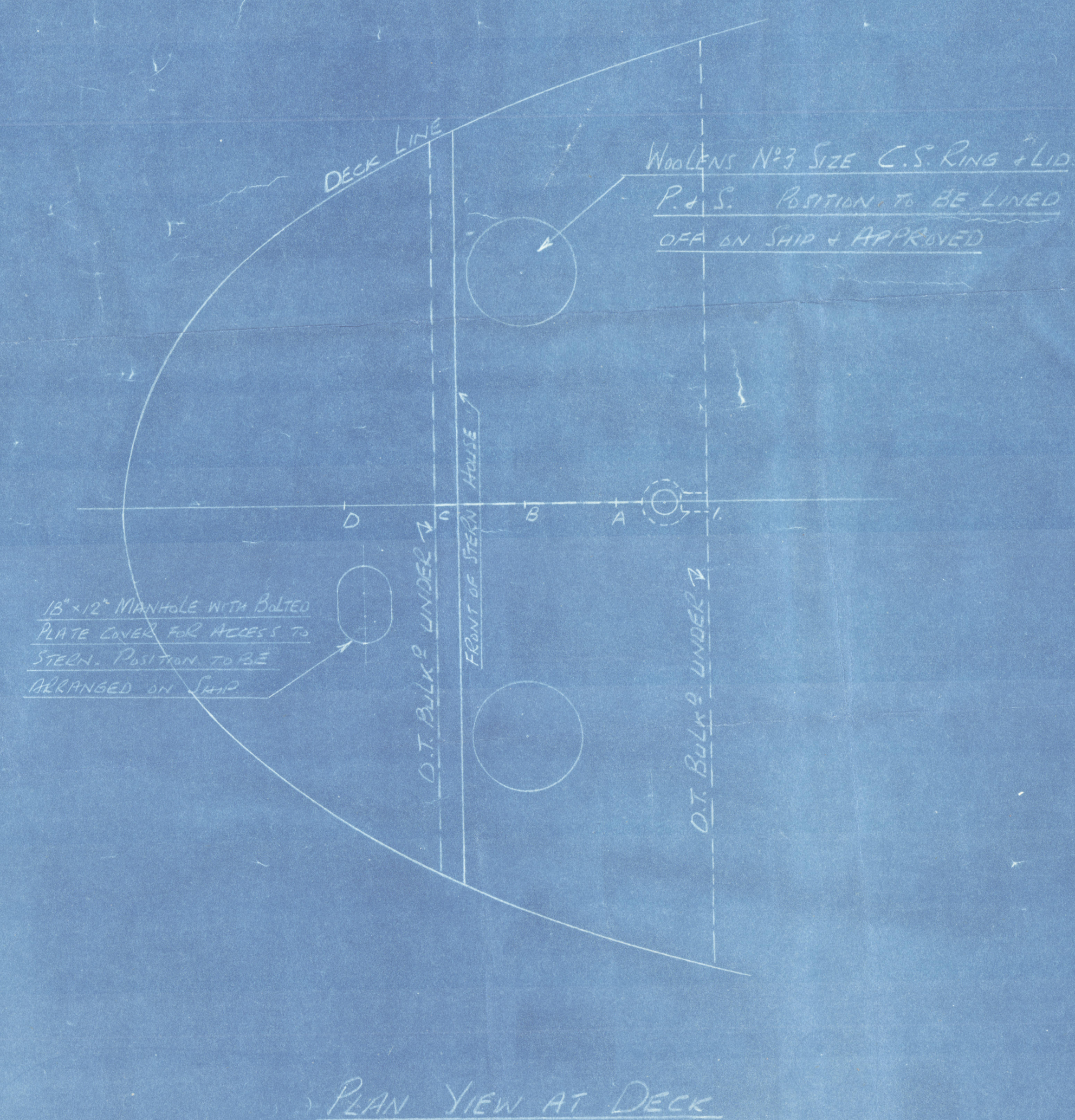
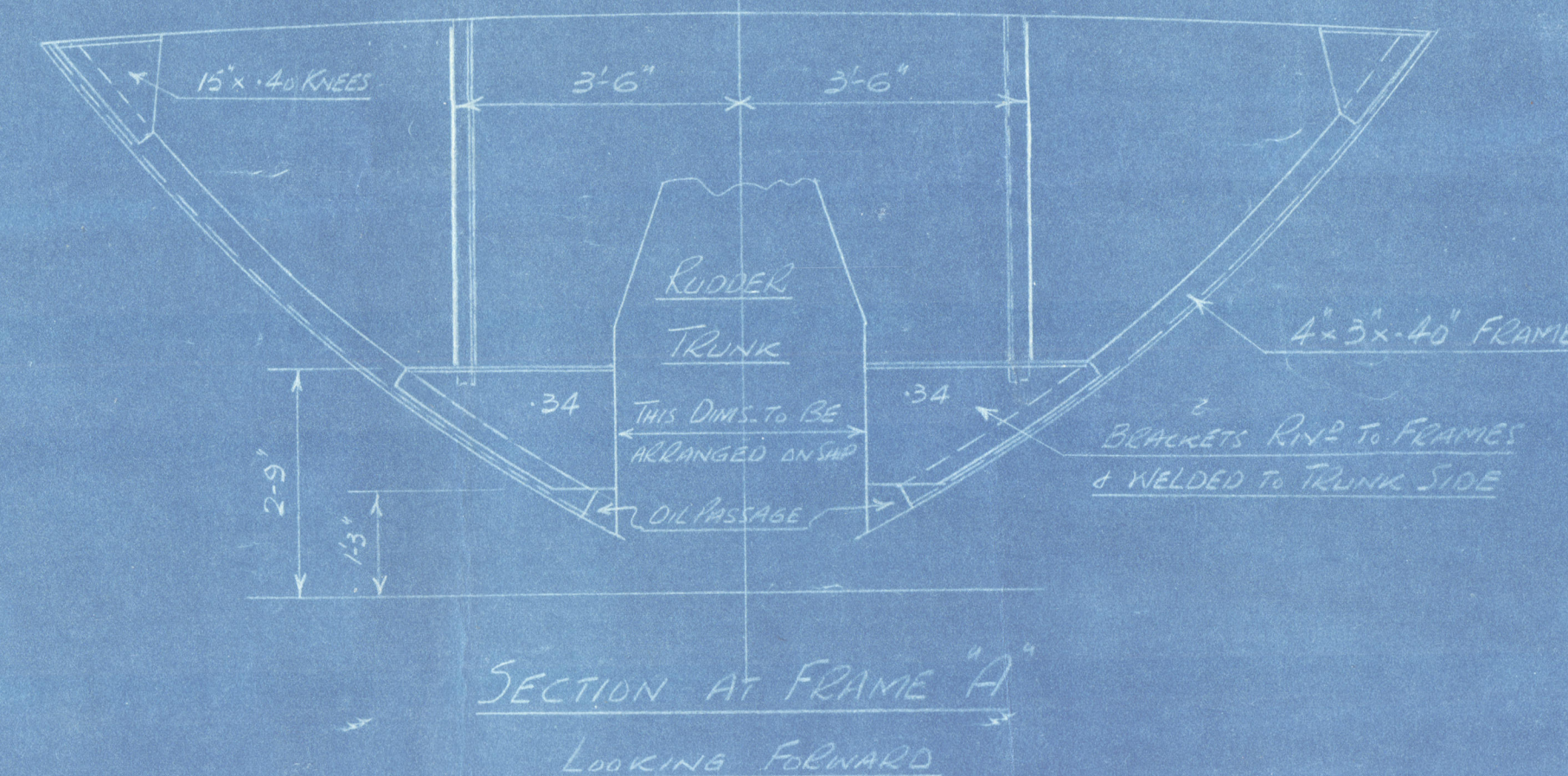
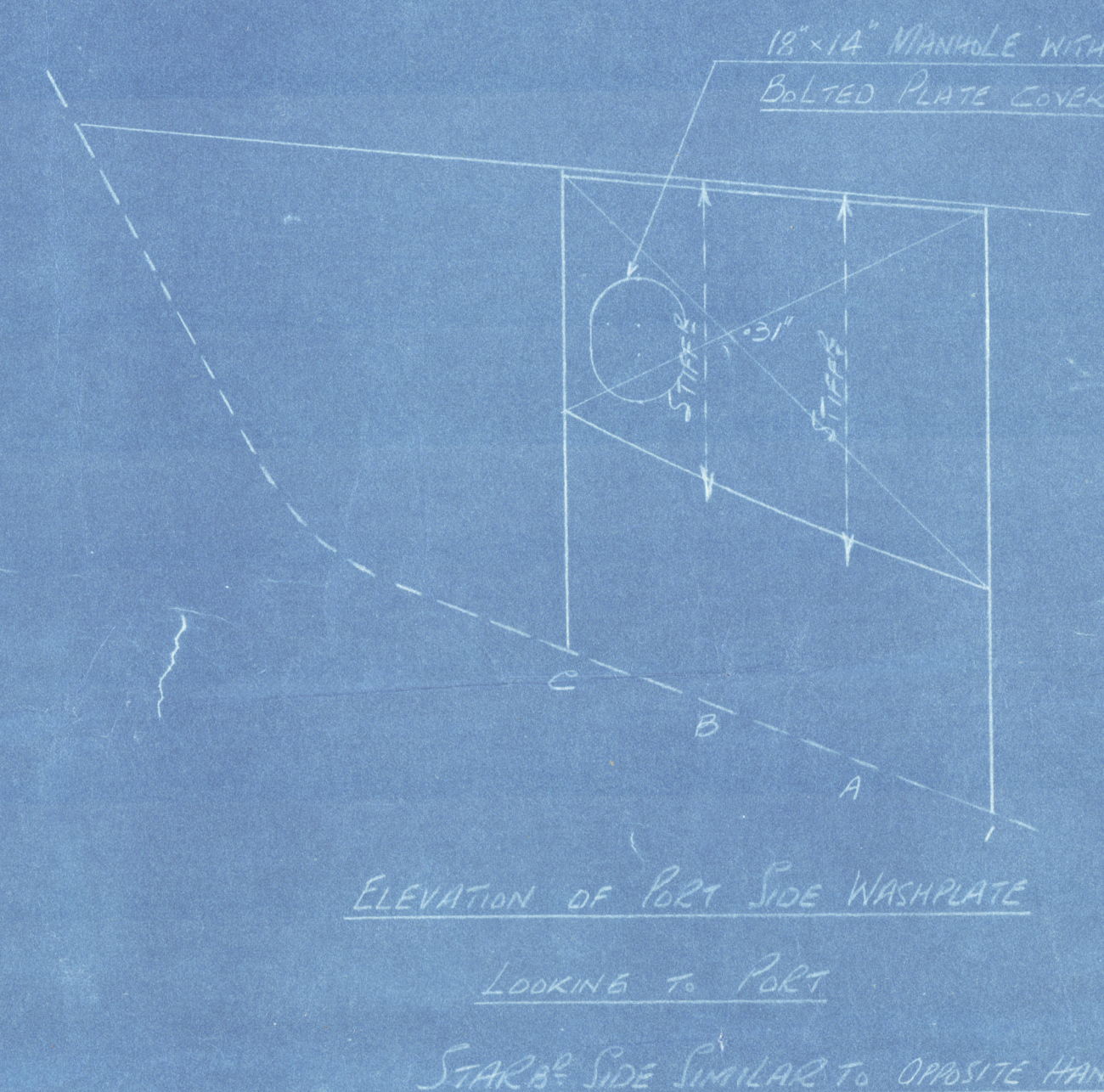
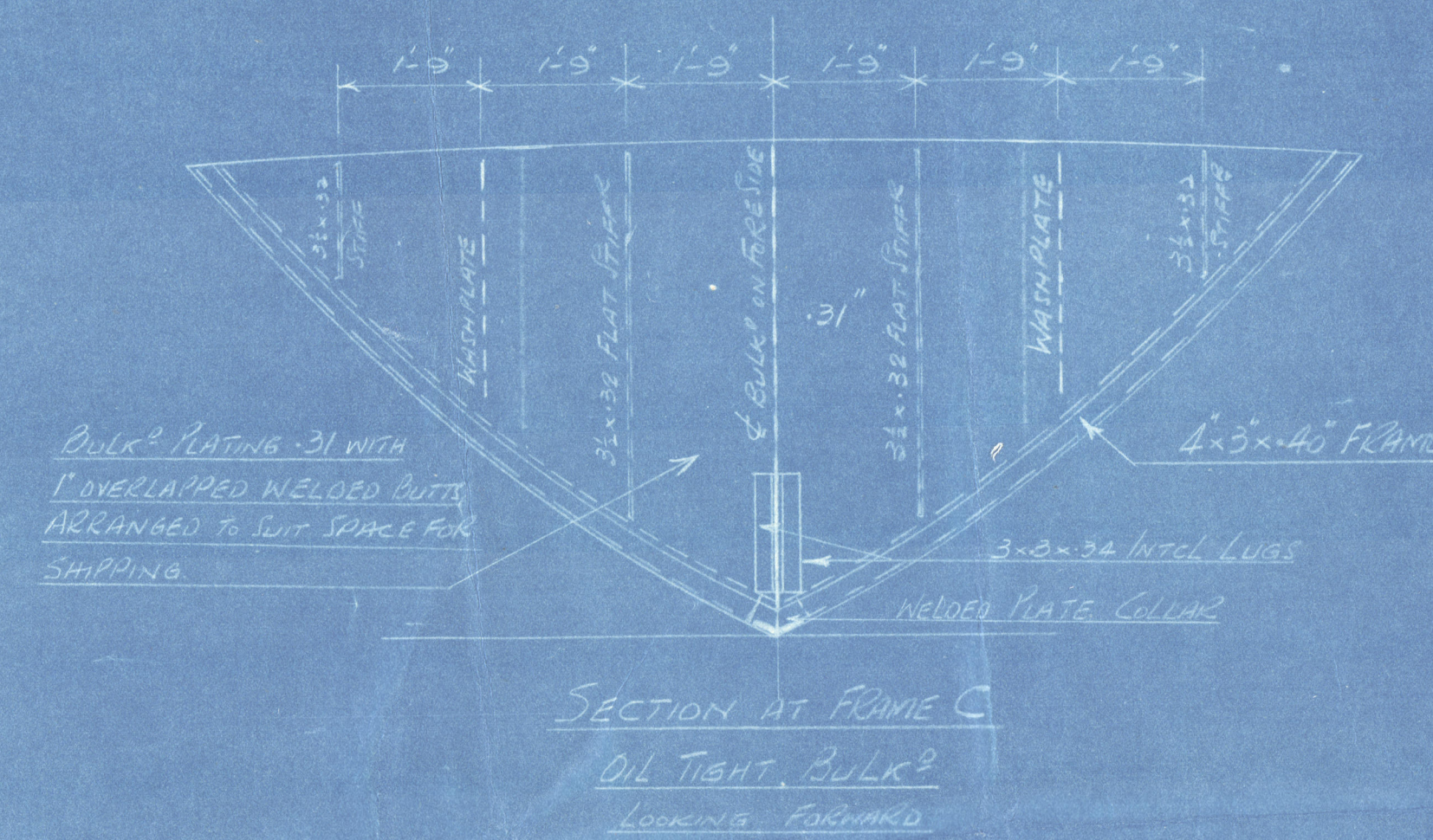
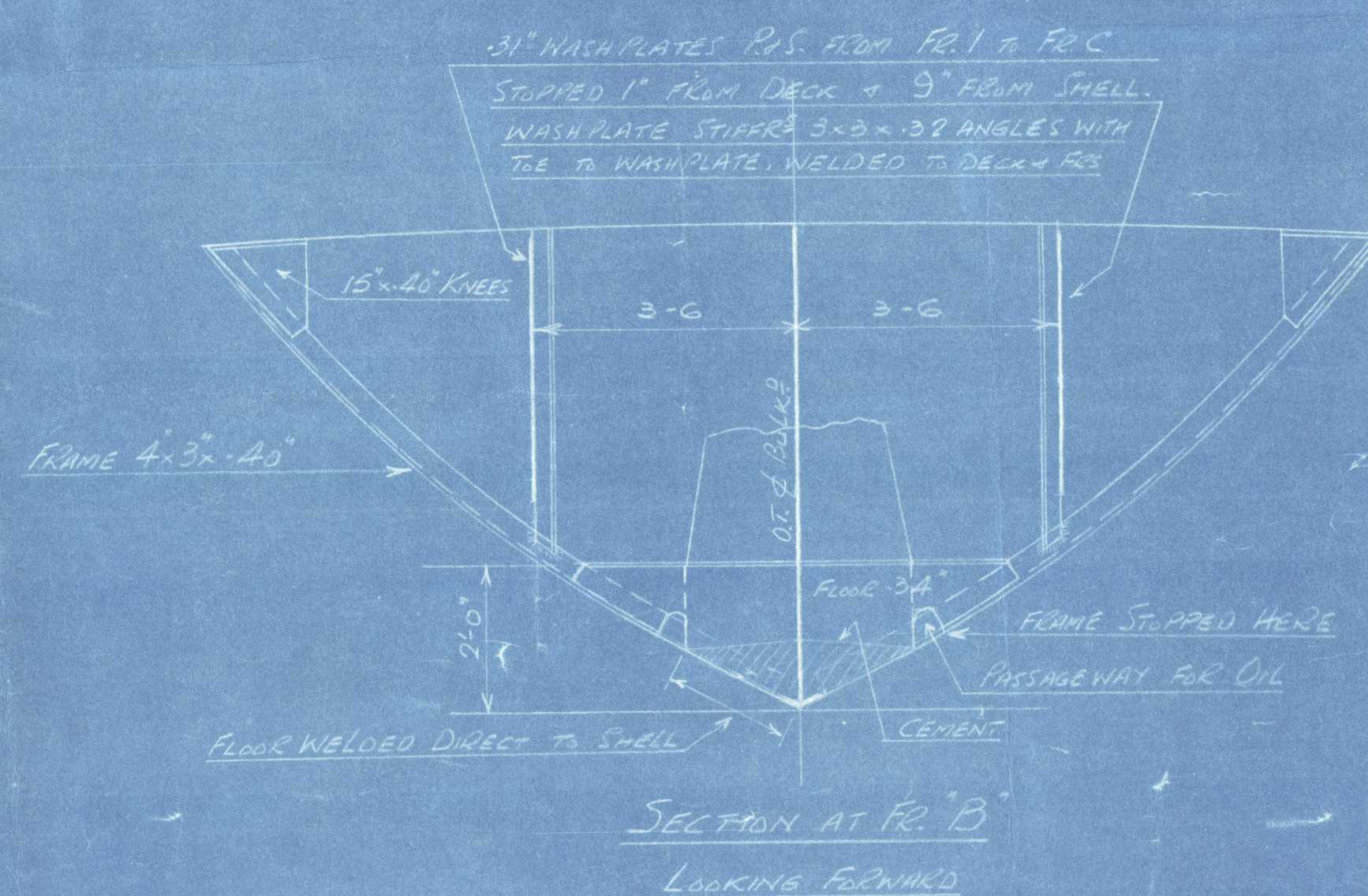
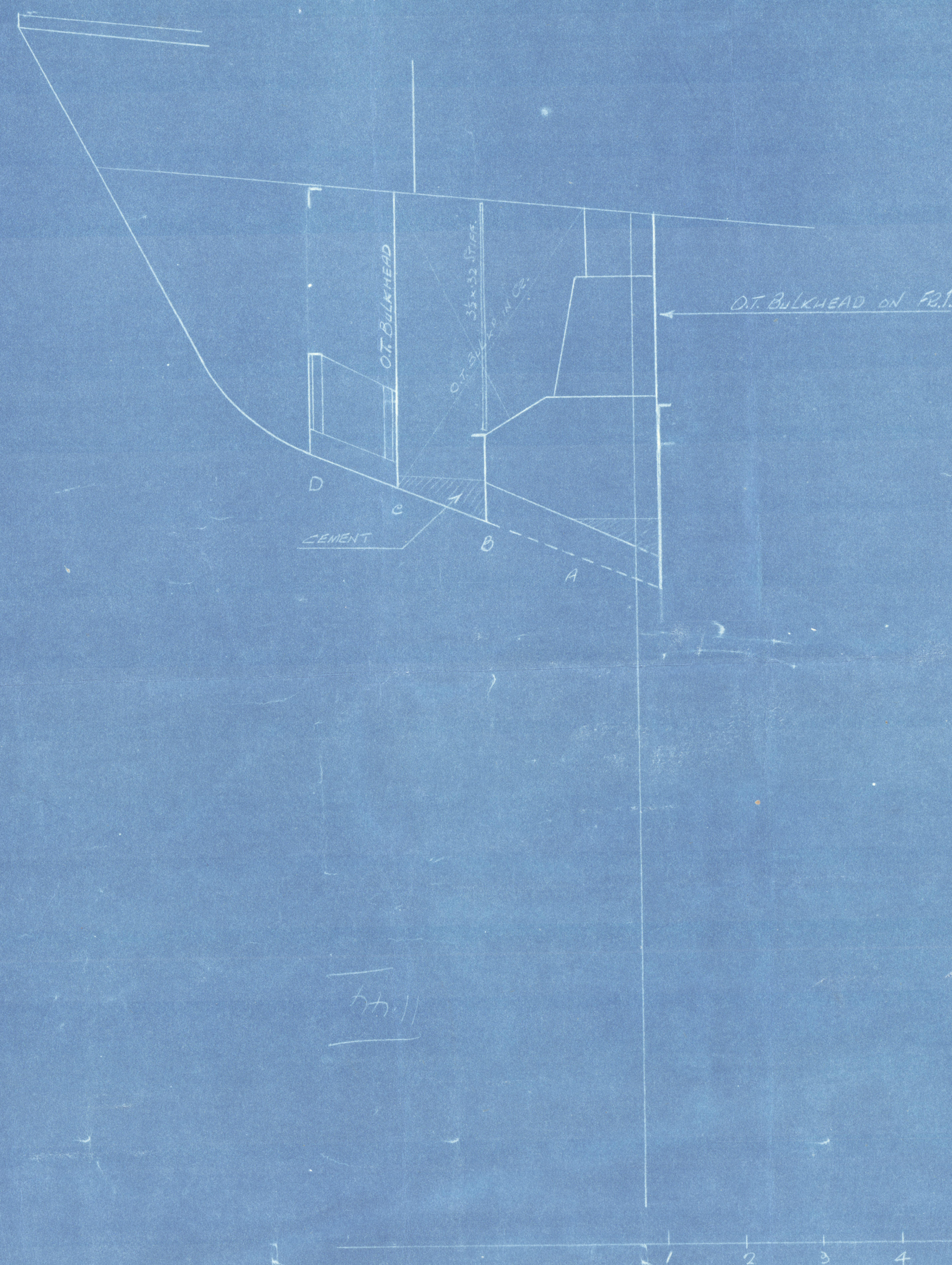


3/4" RIFSNES "FOOTS" TANK IN CRUISER STERN

SCALE 1/2" = 1'-0"

CAPACITY 7 1/2 TONS



S.T. "RIFSNES"

Mat. Report No 16506

Smiths Dock Co, Ltd.

Plan of foats tank in cruiser

Stern

W281-0020



© 2021

Lloyd's Register
Foundation