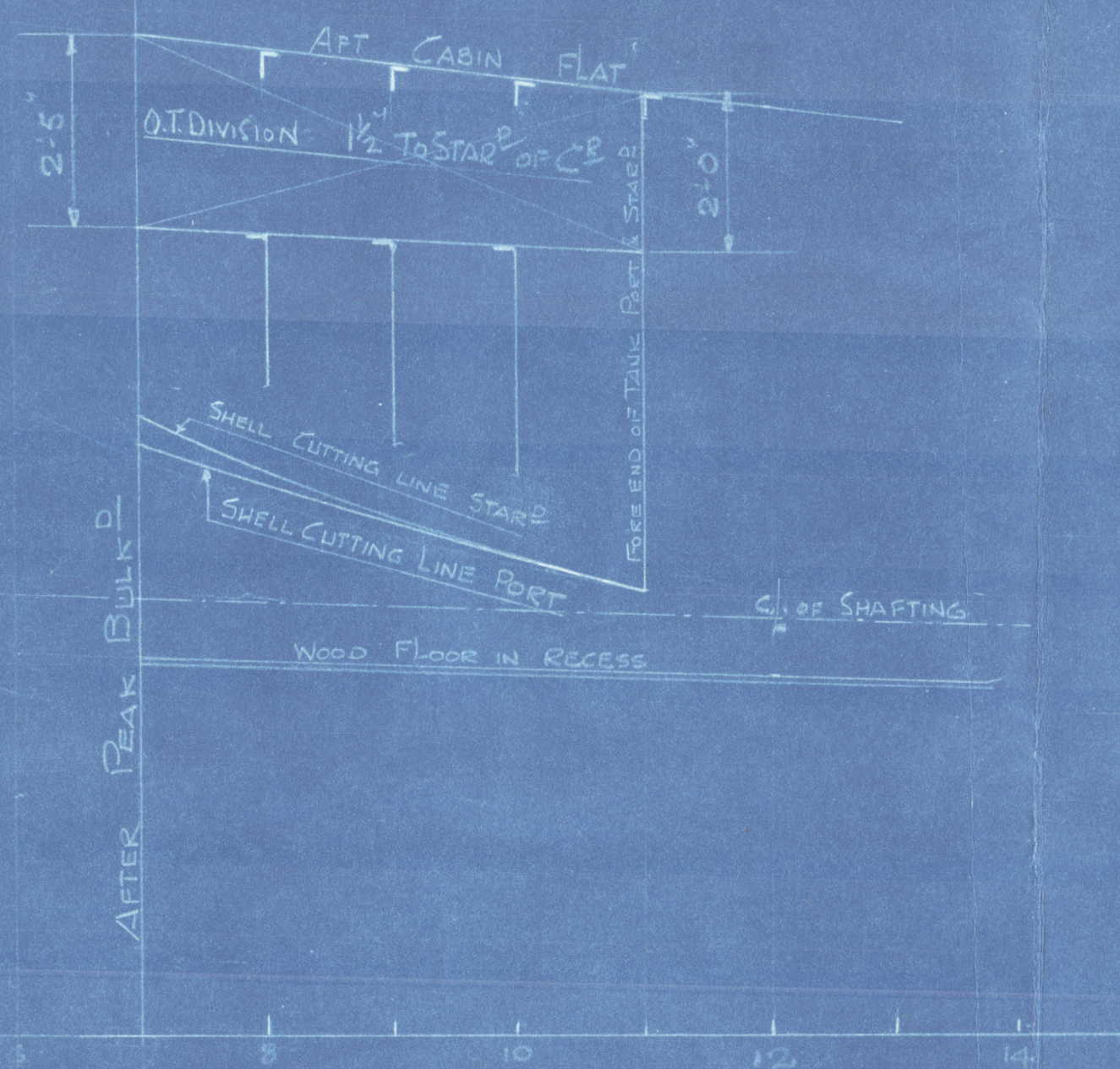


SIT RIFSNES

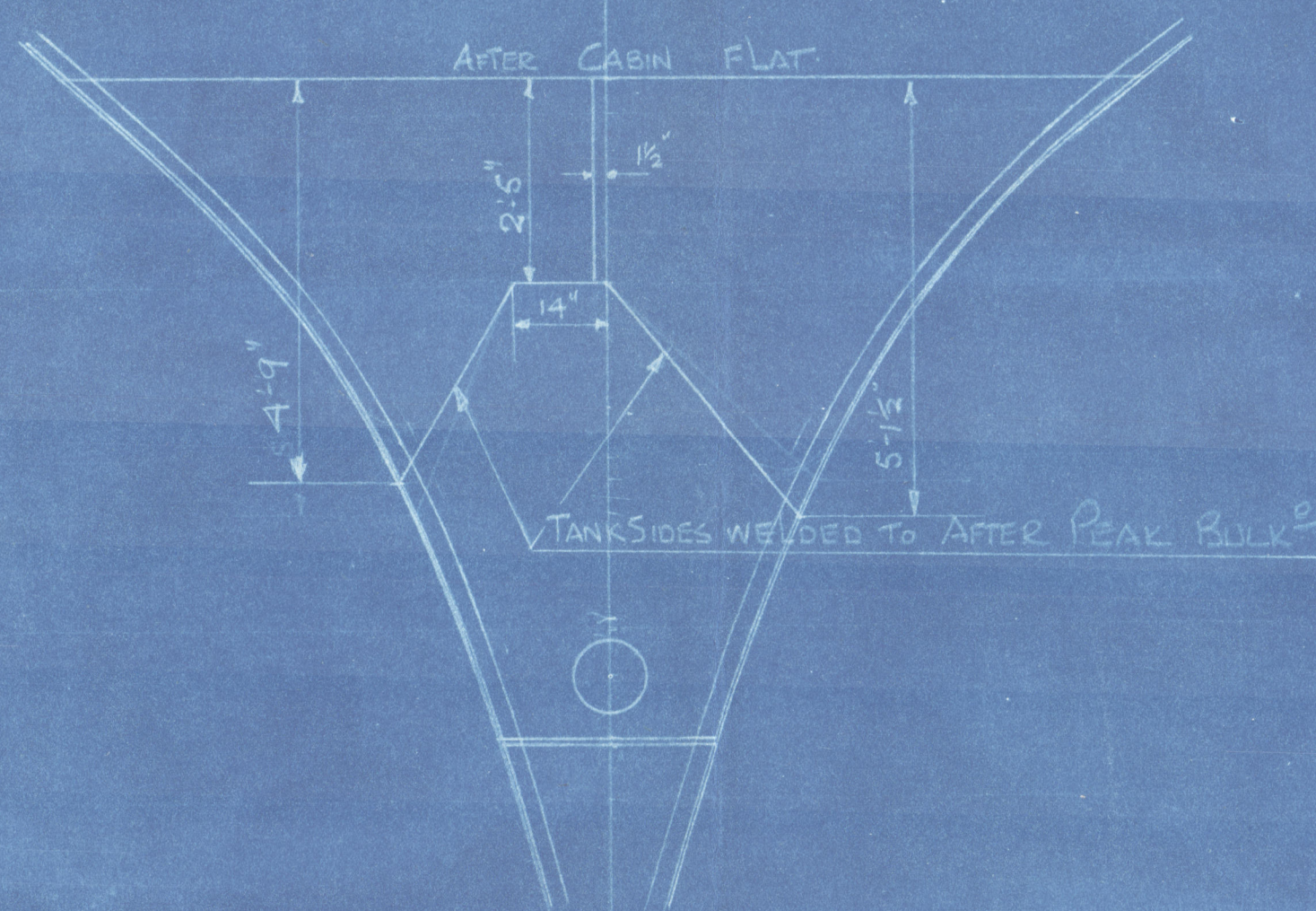
COD LIVER OIL TANK UNDER AFTER CABIN FLAT

SCALE $\frac{1}{2}" = 1 \text{ FOOT}$

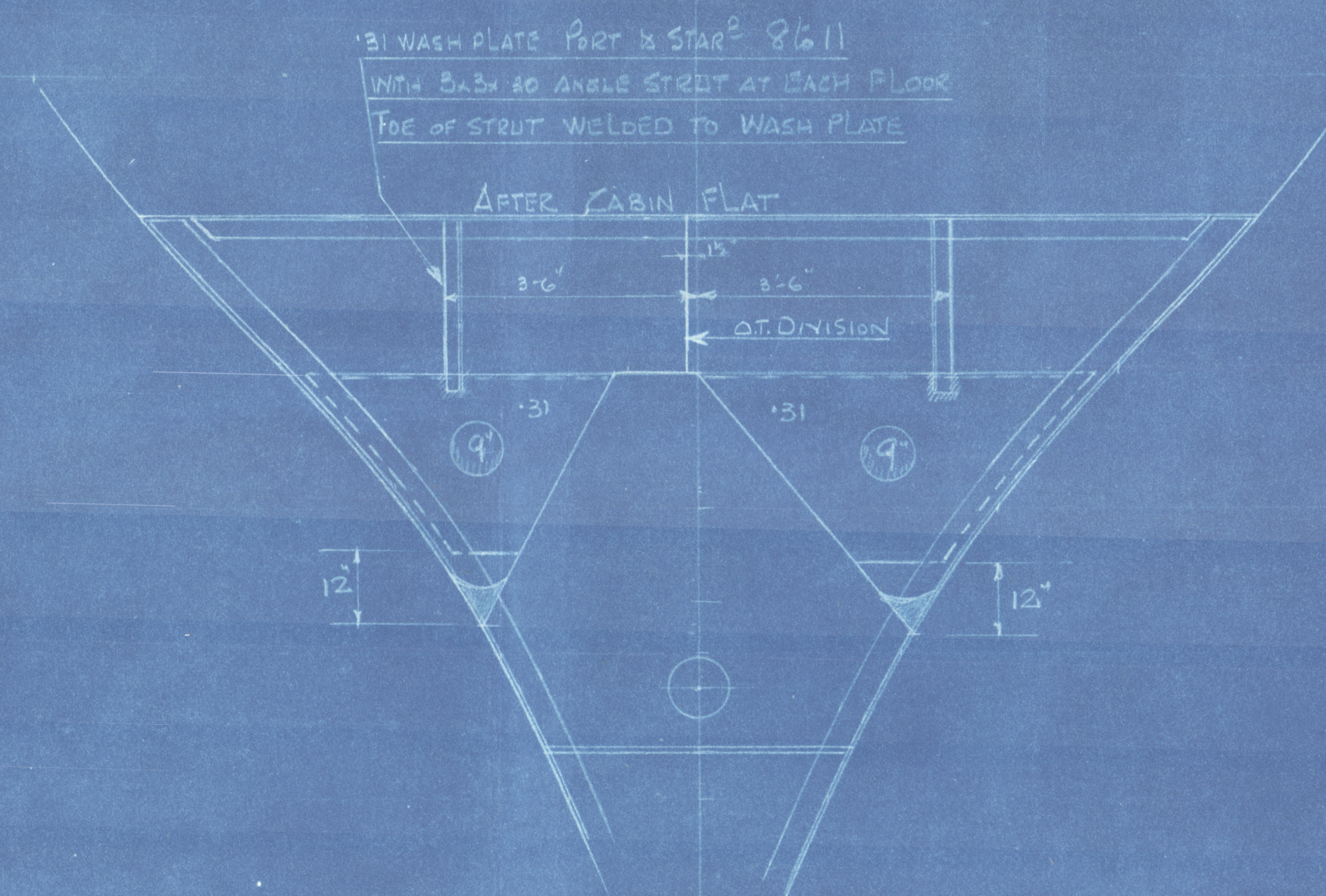
CAPACITY 7.38 TONS
44.28 BARRELS



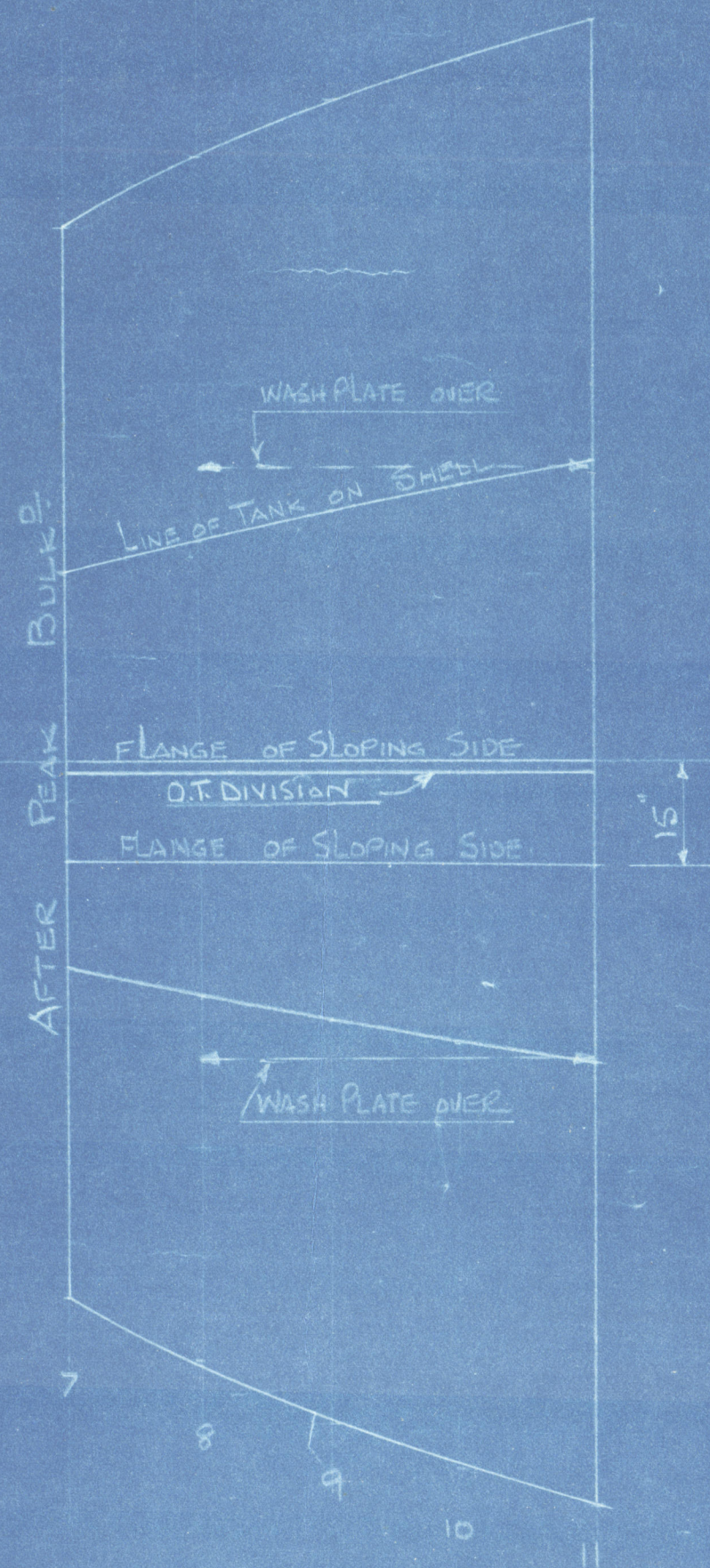
ELEVATION



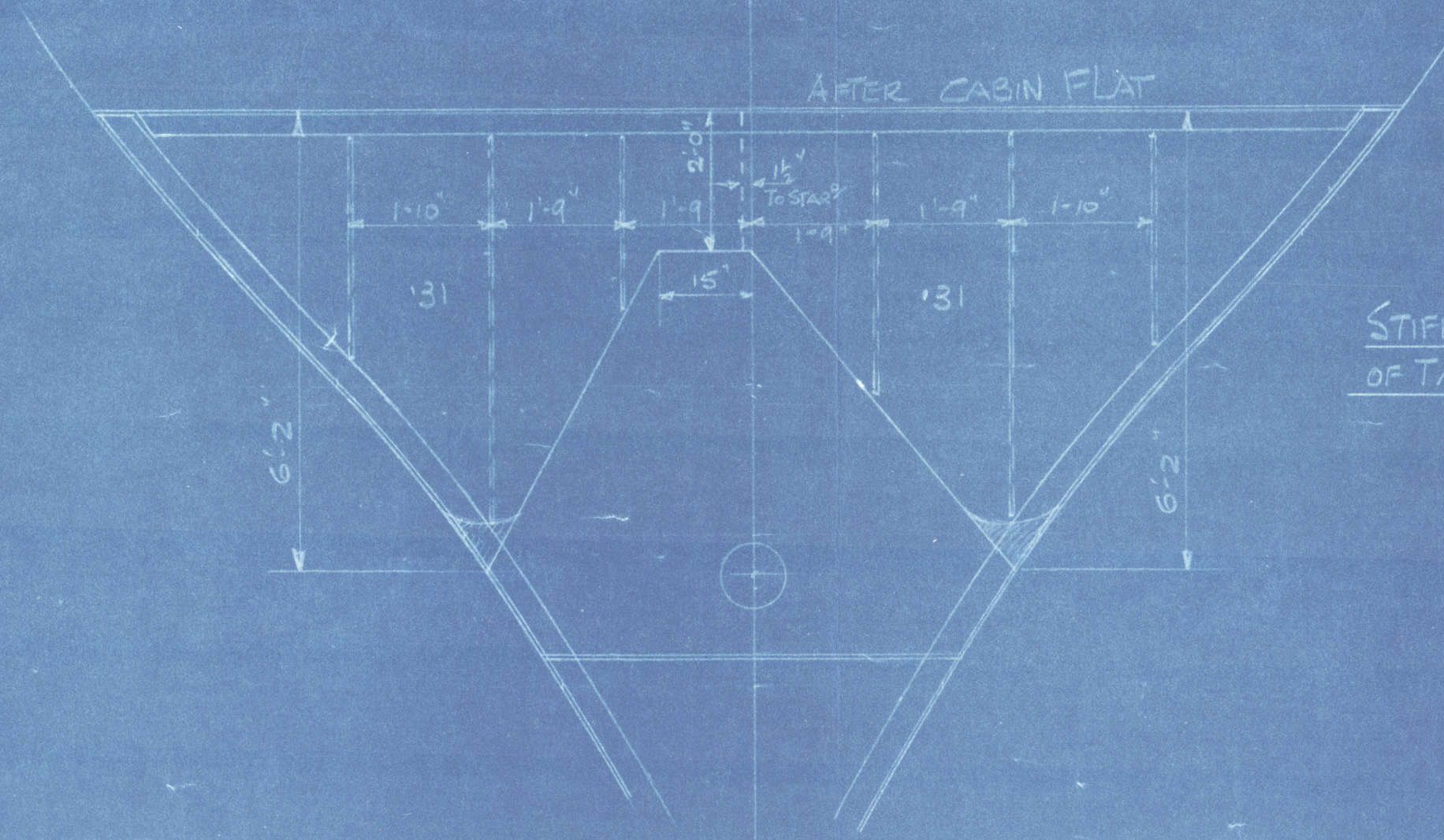
SECTION
AT FRAME 7
LOOKING AFT



SECTION
AT FRAME 9
LOOKING AFT



PLAN



SECTION
AT FORE END OF TANK
FRAME 11

S.T. "RIFSNES"

Mab. Rpt No 16506

Smiths Dock Co. Sta.

Cod Liver oil tank under after

Cabin flat

W281-0018



© 2021

Lloyd's Register
Foundation