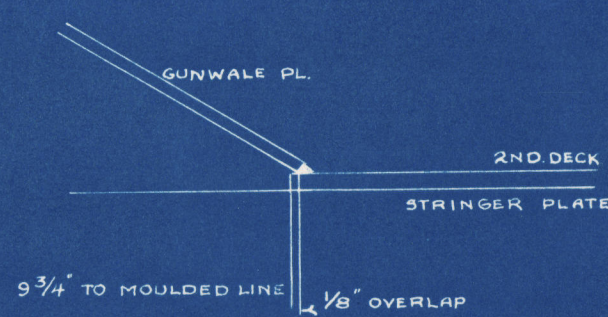


## PRINCIPAL DIMENSIONS:

LENGTH B.P.	416'-0"
BREADTH EXTRA.	57'-1"
BREADTH MLD.	56'-10 1/2"
DEPTH MLD. UPPER DECK	37'-4"
DEPTH MLD. SECOND DK.	28'-7"
DEPTHS TO LENGTH-UPPER DECK	11.14

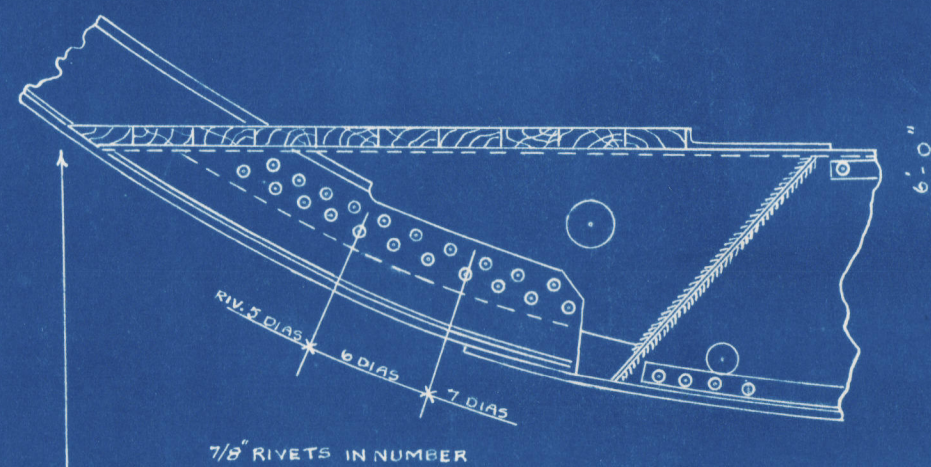
## DETAIL AT A.A.



## SIDE SHELL PLATING:

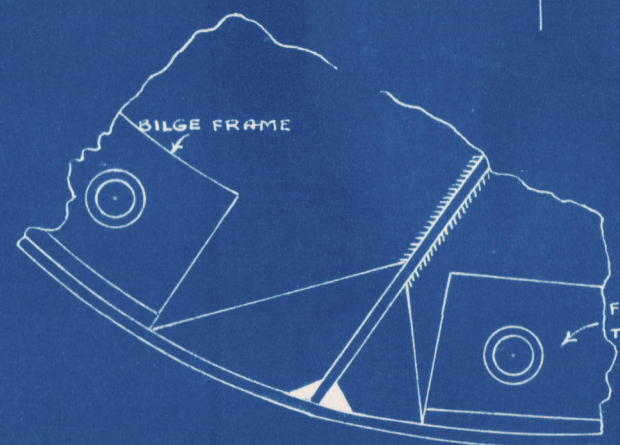
30' FRAME SPACING  
3/8" AMIDSHIPS TO 1/16" AT ENDS  
SIDE SHELL PLATING AS 1/16" ABOVE END THICKNESS (10 1/16") IN WAY OF PANTING AREA, IN LIEU OF STRINGERS FOR A DISTANCE AFT OF COLLISION BULKHEAD EQUAL TO 10% L OF VESSEL.  
SIDE SHELL 20% ABOVE END THICKNESS (10 1/16") IN WAY OF FOREPEAK TANK IN LIEU OF STRINGER CONNECTIONS TO SHEEL BOSS PLATING 1/16" OUTER PLATE 20% ABOVE RULE

## DETAIL OF TANK GUSSETS



## ARRANGEMENT OF BILGE BRACKETS IN NO 1 HOLD

## DETAIL OF BILGE BRACKETS AFT OF FRAME 66 & FOR'D OF FRAME 106 (EXCEPT NO 1 HOLD)



## DETAIL OF DRAIN HOLES (SCALE 2"=1'-0")

## EQUIPMENT:

2	BOWER ANCHORS	68 CWT
1	STUD CABLE CHAIN	225 FATHOMS 2 1/2"
1	STEEL ANCHOR (STOCKLESS)	25% CWT
1	STEEL WIRE	90 FATHOMS 5" - 6 1/2 FSW
1	TOWLINE	120 " 4 3/4-6 1/2 SPECIAL F.S.W.
2	HAWERS	90 " 2 3/4-6 1/2 FSW
2	WARPS	90 " 2 1/2-6 1/2

## EQUIPMENT NUMERAL:

L(R)YD	39/89
MIDSHIP DECKHOUSE	50.25 x 7.5 x 10.0
CASINGS	20.5 x 7.5 x 10.0
"	59.75 x 10.0 x 10.0
AFTER DECKHOUSE	28 x 1.5 x 10.0
	39,798

## CLASS:

100 A.I. LLOYDS, WITH FREEBOARD CORRESPONDING TO A DRAFT 18" MORE THAN THAT OF A COMPLETE SUPERSTRUCTURE VESSEL.

## WELDED CONSTRUCTION:

### GENERAL:

THE CONSTRUCTION CALLS FOR RIVETED LONGITUDINAL SEAMS AND WELDED BUTTS THROUGHOUT

### SHELL PLATING:

BOTTOM SHELL: BUTTS ALL WELDED FROM INSIDE  
SIDE SHELL: INSIDE STRAKES WELDED FROM INSIDE  
OUTSIDE STRAKES WELDED FROM OUTSIDE

## TANK TOP, 2ND DECK AND UPPER DECK:

### WATER TIGHT BULKHEADS,

### CENTRE LINE BULKHEADS, AND

### TWEEN DECK BULKHEADS:

COMPLETELY RIVETED THROUGHOUT BUT WELDED CONNECTION AT BOTTOM TO TANK TOP (OR TO 2ND DECK IN CASE OF TWEEN DECK BULKHEADS)

## CENTRE LINE BULKHEAD:

5/16" PLATING  
STIFFENERS TWO FRAME SPACES APART  
DOUBLE STIFFENERS AT HATCH ENDS WITH BRACKETS AT TOP AND BOTTOM  
CONNECTION TO SECOND DECK 3" x 3" x 3/8"  
WELDED CONNECTION TO TANK TOP

## INTERCOSTAL PLATE GIRDERS:

(AS SHOWN ON TANK TOP PLANS)  
3/8" IN HOLD  
1/16" IN ENGINE SPACE  
1/2" IN BOILER SPACE  
VERTICAL STIFFENERS 3" x 3" x 3/8"  
IN BOILER SPACE 3 1/2" x 3 1/2" x 1/16"  
BOTTOM CONNECTIONS 3 1/2" x 3 1/2" x 3/8"  
TOP CONNECTIONS 3 1/2" x 3 1/2" x 3/8"  
UNDER ENGINE 6" x 6" x 1/2"  
IN BOILER SPACE 4" x 4" x 1/2"  
ADDITIONAL GIRDERS UNDER ENGINES AND FORWARD OF 1/2 L AS PER SECTION II

## CEMENT CHOCKS

TO BE FITTED AT UPPER EDGE OF BILGE CEILING IN ALL HOLDS EXCEPT NO 1

## MIDSHIP SECTION NORTH SANDS CARGO STEAMER

HULL NO. 110 S.S. FORT FRANKLIN

WEST COAST SHIPBUILDERS LTD.

FALSE CREEK

NOV. 1942

VANCOUVER, B.C.

