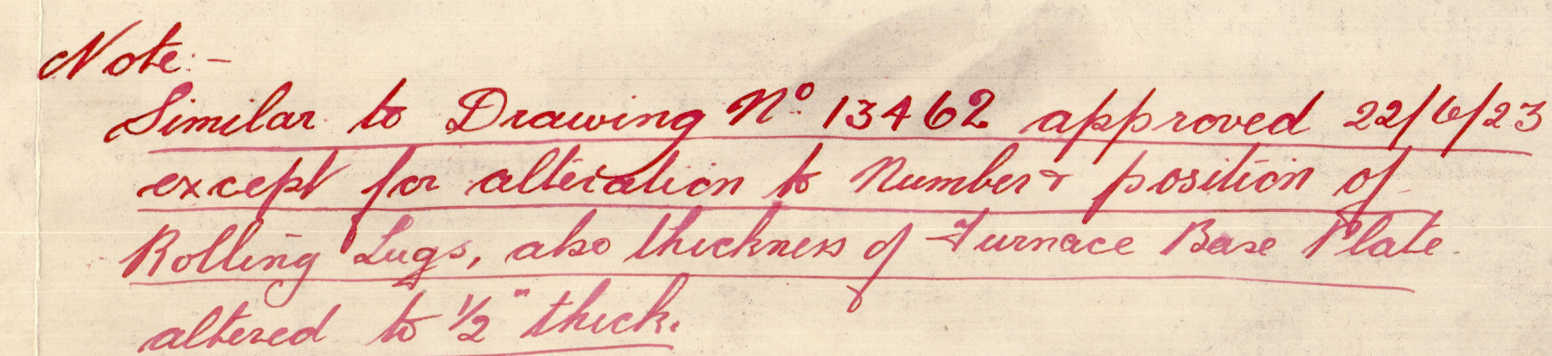
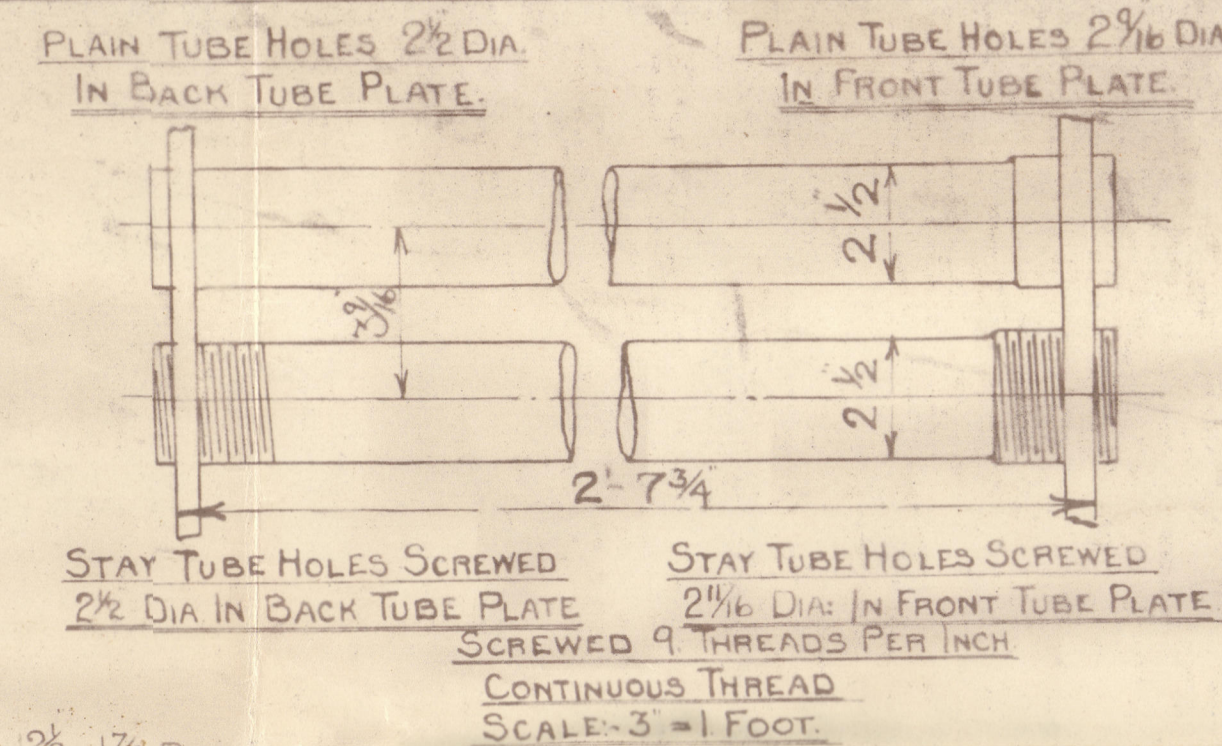


HORIZONTAL FLUE TUBES



Scale: 1/2 inch to 1 foot

SIEMENS-MARTIN MILD STEEL PLATES
TENSILE TESTS.

N. R.

PLATES NOT EXPOSED TO FLAME OR FLANGED.....28 TO 32 TONS.
PLATES EXPOSED TO FLAME OR FLANGED.....26 TO 30 TONS.

LLOYD'S	
PLATE	$\frac{(214) - (71875)}{2141} \times 100 = 66.4\%$
RIVETS	$\frac{100(23 \times 4057.8 \times 1)}{8 \times 2 \times 292 \times 375} = 77.7\%$
FRONT TUBE PLATE	$\frac{3.5625 \times 6.25}{3.5625 \times 6.25} \times 100 = 26.3\%$
BACK TUBE PLATE	$\frac{3.5625 \times 2.5}{3.5625} \times 100 = 29.8\%$
GRILL	$\frac{(12 \times 2.5 \times 6.64)}{2.0 \times 4.5} = 142.51\%$
FRONT TUBE PLATE	$\frac{(21-2) \times 6.25 \times 2.3}{2.9 \times 12.8 \times 1.8} = 106 \text{ LBS}$
BACK TUBE PLATE	$\frac{(16-2) \times 6.25 \times 2.3}{2.9 \times 12.8 \times 1.8} = 116 \text{ LBS}$
FURNACE CROWN	$\frac{275 \times (6-1)}{1300} = 179.2\%$
FURNACE SIDE	$\frac{1300 \times (15-1)}{(18 \times 24) \times 38.094} = 159.5 \text{ LBS}$
" "	$\frac{1300 \times (10-1)}{(18 \times 24) \times 38.094} = 144 \text{ LBS}$

COCHRAN & CO ANNAN LTD
ENGINEERS & BOILERMAKERS
ANNAN, SCOTLAND

DRAWING NO. 14292

© 2021
14292 Register

W27-0031

COCHRAN & CO., ANNAN, LD.


Boiler No 9675

Drawing No. 14292

W.P. 100 lbs.

GLASGOW REPORT No. 44882

Dunkwa.

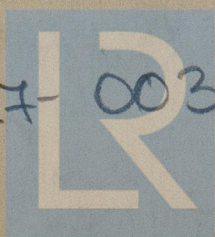
735 *Dunkwa* 
GLASGOW REPORT No 46984

~~GLASGOW REPORT No~~

~~GLASGOW REPORT No~~

~~GLASGOW REPORT No~~

W27-0038



© 2021

Lloyd's Register
Foundation