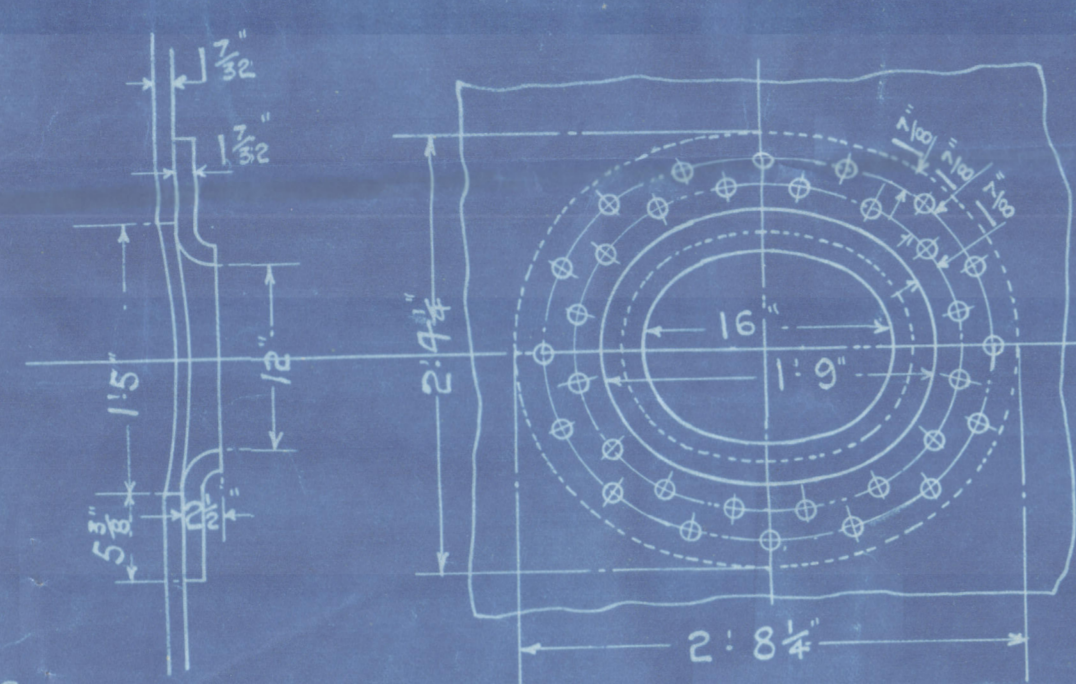
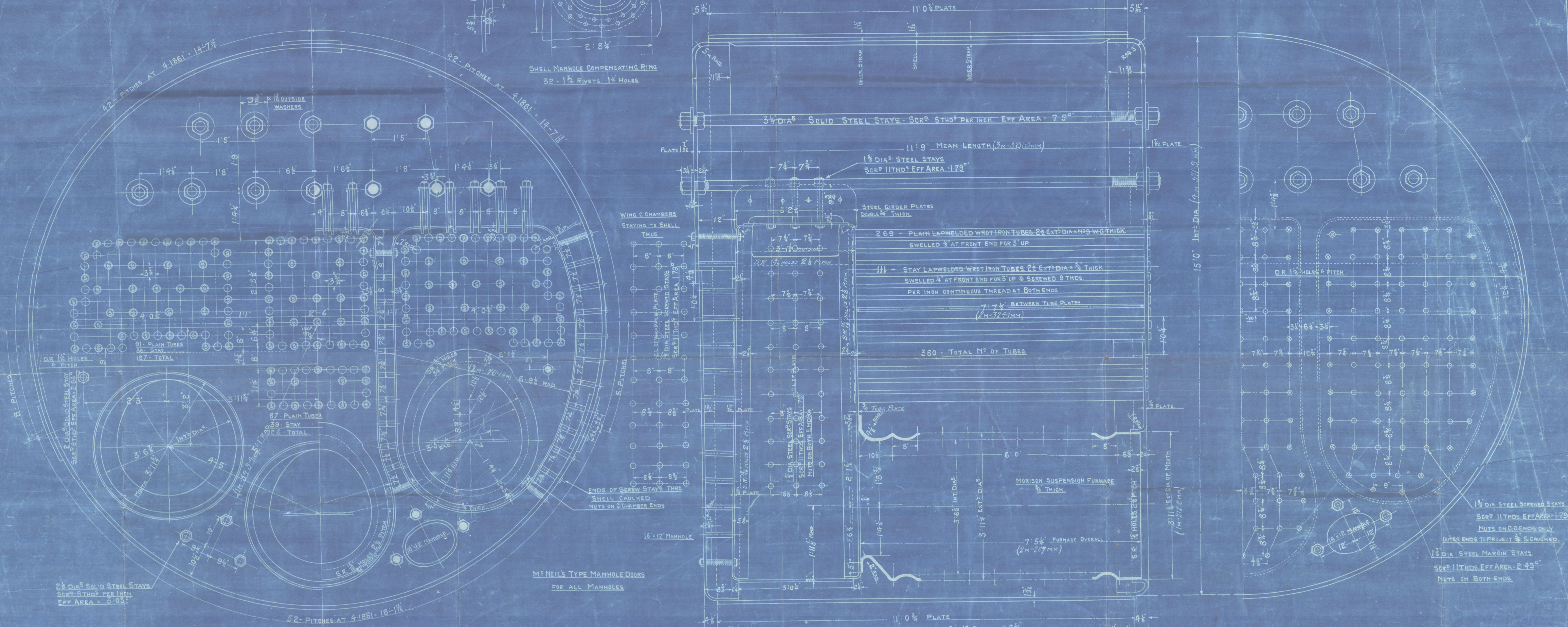


25-8-19



SHELL MANHOLE COMPENSATING RING
32 - 1" RIVETS, 1" HOLES



2" DIA SOLID STEEL STAYS
SCR 8 THDS PER INCH
EFF AREA = 5.05"

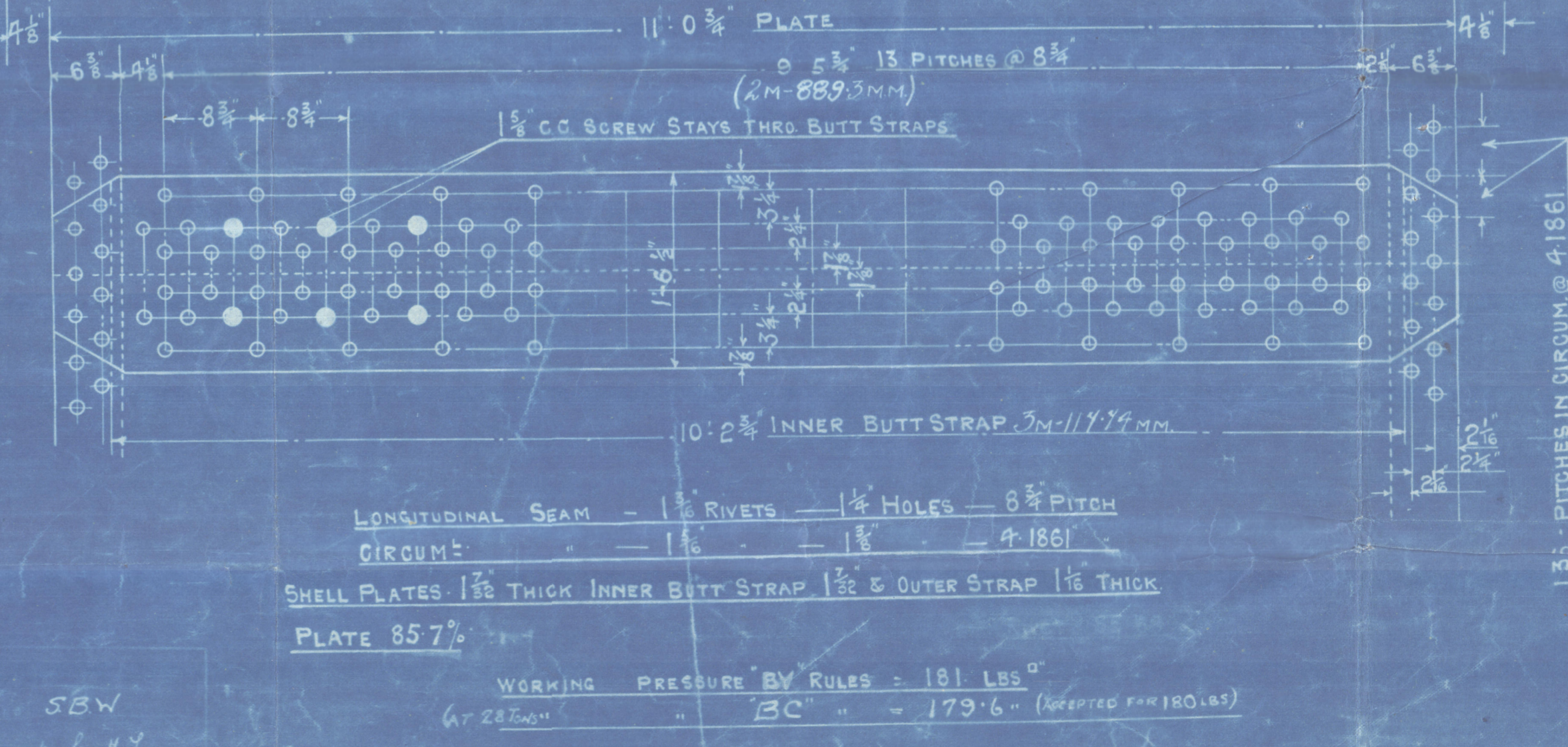
McNEIL'S TYPE MANHOLE DOORS
FOR ALL MANHOLES

ALL PLATES STAYS & RIVETS	
OF SIEMENS MARTIN MILD STEEL	
TUBES - WROT IRON	
LONGITUDINAL SEAMS - TREBLE RIVETED	
WITH DOUBLE BUTT STRAPS	
CIRCUMFERENTIAL SEAMS - DR. LAP JOINT	
WORKING PRESSURE	180 LBS/SQ IN
TEST	360
ALL HOLES DRILLED IN PLACE THEN PLATES	
TAKEN APART AND BURRS REMOVED	
HYDRAULIC RIVETING WHERE PRACTICABLE	

THICKNESSES	
SHELL PLATES	1 1/2"
INNER BUTT STRAPS	1 1/8"
OUTER	1 1/8"
TOP ENDS	1 1/8"
BACK END BOTTOM	1 1/8"
FRONT	1 1/8"
BACK TUBE PLATE	1 1/8"
C CHAMBER BACKS	1 1/8"
C TOP & SIDES	1 1/8"
C BOTTOM	1 1/8"
C GIRDERS	1 1/8"
FURNACES	1 1/8"
MANHOLE COMP. RING	1 1/8"


TENSILE STRENGTHS	
SHELL PLATES 20 - 35 TONS	
BUTT STRAPS	285
MANHOLE COMP. RING	285
C.C. GIRDERS 28 - 32 TONS	
SOLID STEEL STAYS	
ALL OTHER PLATES 26 - 30 TONS	
FURNACES	
SREWED STAYS	
RIVET BARS	

HEATING & GRATE SURFACE	
HEATING SURFACE IN 380 TUBES	1894 sq ft
C. CHAMBERS	285
FURNACES	195 sq ft
TOTAL H.S. IN ONE BOILER	2324 sq ft
3 BOILERS	6972 sq ft
GRATE SURFACE IN ONE BOILER	53.59 sq ft
3 BOILERS	160.78 sq ft
RATIO - G.S. H.S.	1 : 43.5
FIREBARS 5'0" LONG IN TWO LENGTHS	
2 - 3" DIA SAFETY VALVES - PER BOILER	

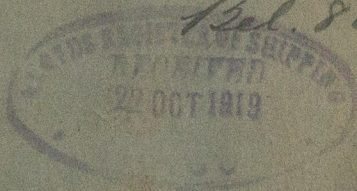


BOILERS ENGINES NO 473

3 - OFF
15'0" INT DIA x 11'9" MEAN LENGTH
BRITISH CORPORATION
TO PASS BUREAU VERITAS FOR 180 LBS/SQ IN W.P.
SCALE - 1" = 1 FOOT
NOTE: MATERIALS FOR NO 472 TO BE TESTED BY B.V. SURVEYORS
AND NO 474 B.V.
6th SEPT. 1917

 S/s Ville de Havre
Ave 4763
Main Borders

"Ville de Rouen"
Bel. 8221



© 2021

Lloyd's Register
Foundation

W268-0240