

STEEL BOILERS

To Lloyds Requirements for a working pressure of 180 lbs per sq inch.

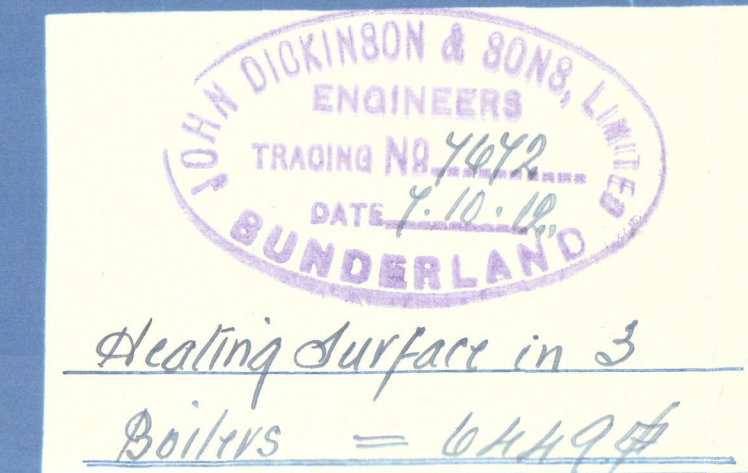
All plates, rivets, stays & girders of steel. Tubes of Wrought Iron.

Scale 1" = 1 foot

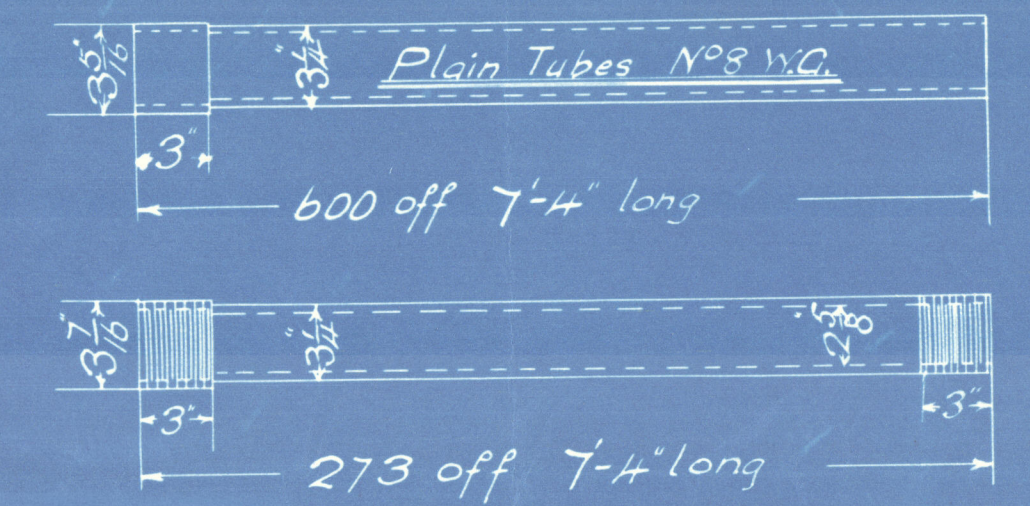
Edwd

DATE

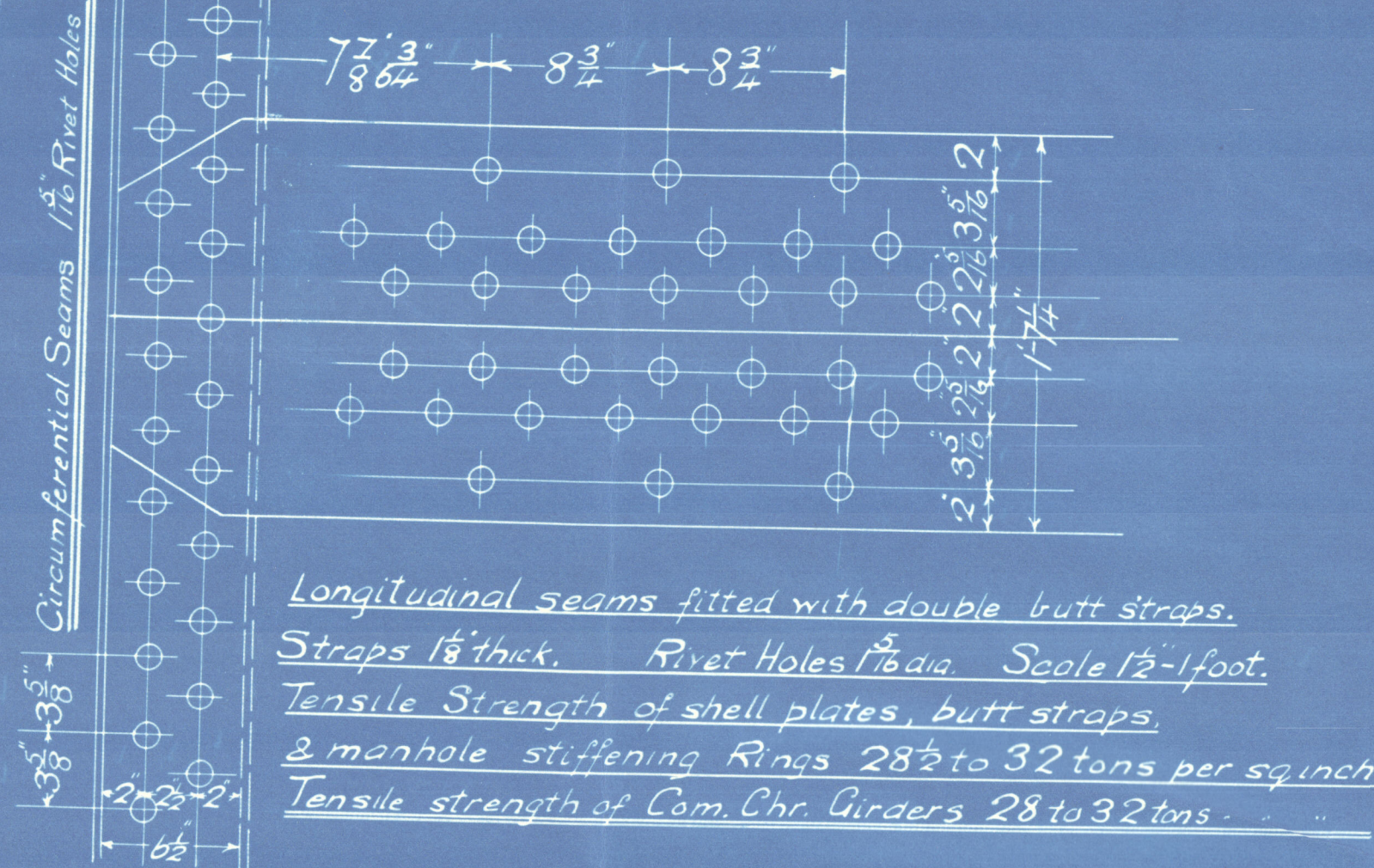
ENC	7573	OFF	Intended for Messrs J.L. Thompson & Sons S.S.Nº 497	Sept 27-12



Stays	Threads	Eff	No in
1 1/2"	9	1792	235
2"	9	1837	264
2 1/2"	6	2286	413
3"	6	3036	722
1 1/4"	9	1608	203



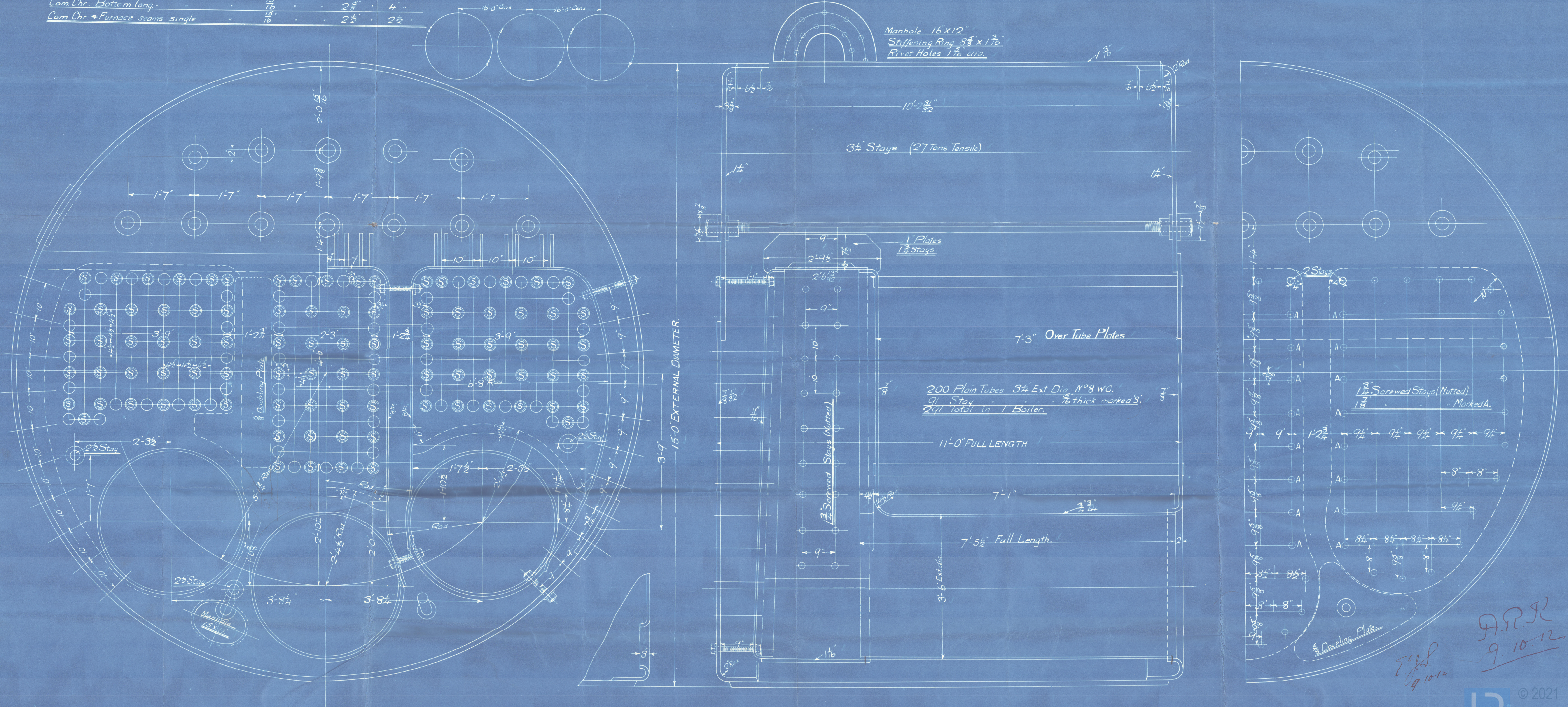
Stay Tubes 5/16" thick 10 threads per in Eff area 2'2" x 3'0"



Longitudinal seams fitted with double butt straps.
Straps 1/2" thick. Rivet Holes 1 1/2" dia. Scale 1 1/2" = 1 foot.
Tensile Strength of shell plates, butt straps.
3 manhole stiffening Rings 28 1/2 to 32 tons per sq inch
Tensile strength of Com Chr Girders 28 to 32 tons.

RIVETING

Front & Back Seams double riveted 1/16" Rivet holes 3 1/2" pitch 5 3/8" lap.
Com Chr. Bottom long. 1/16" 2 1/4" 4"
Com Chr & Furnace seams single 1/16" 2 1/2" 2 1/2"



A.P.R.
9.10.12

J. DICKINSON & S.

C. No 757.

MAIN. BOILERS.

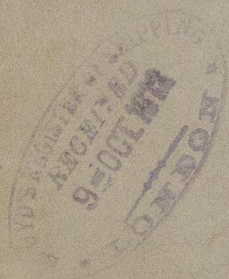
3 OFF.

No 3105 "Vindale"
LLOYD'S TEST.
360 LBS. **EX**
17.4.13 J.T.F. **SIKOS**
EX

North Pacific

M. Rpt. 25689

J L THOMPSON 49 1/2.



© 2021

Lloyd's Register
Foundation

W268-0134