

# S.S. N<sup>o</sup> 497

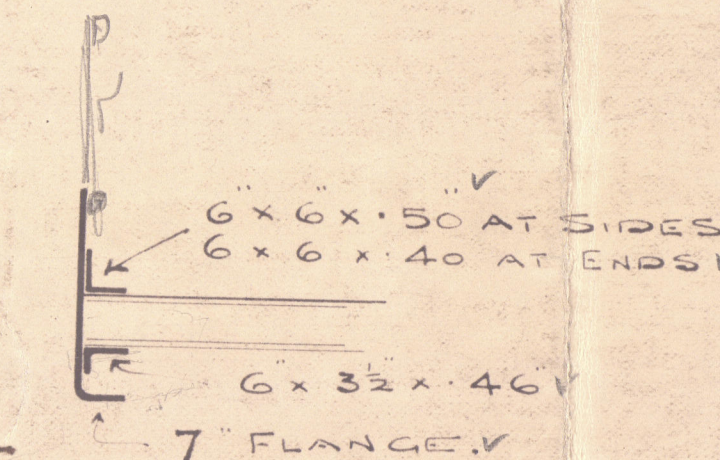
LENGTH B.P. 379'6". BREADTH EXT 53'0". DEPTH MLD 25'4".

SCALE  $\frac{1}{8}$ " = 1 FOOT.

3.9.12  
14.11.12

SHELTER & UPPER DECK RESERVE HOLD HATCHES 12'6" x 18'0"  
36 END COAMINGS. SIDE COAMINGS 5'4"  
COAMING ANGLES 32' x 32' x 46"  
ONE HATCH WEB .40  
30" DEEP AT CENTRE AS SHOWN WITH 4' x 3' x 40" ANGLES

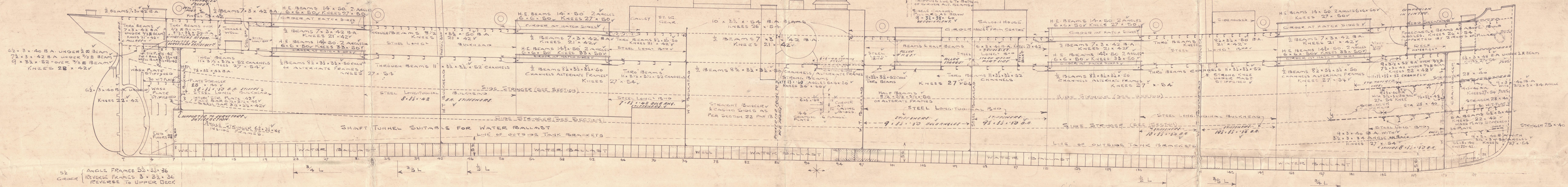
SHELTER & UPPER DECK HATCHES  
FORE, FORE MAIN, AFTERMAIN & AFTER  
HATCHES. 25'0" x 18'0"  
SIDE COAMINGS 5'50" END COAMINGS 4'0"  
4 HATCH WEBS 5'0" APART  
21' x 34' TO 16' x 34' 4' x 3' x 40" ANGLES  
BRACKETS TO SHELTER DECK HATCH WEBS OR WEBS INCREASED 3"



FORECASTLE BEAMS  
OVER  $\frac{2}{3}$  OF BEAM 92' x 32' x 52' B.A.  
UNDER  $\frac{2}{3}$  OF BEAM 82' x 32' x 46' B.A.  
WITH 2 ROWS OF PILLARS, OR EQUIVALENT.

26" STEEL BULKHEADS WITH OPENINGS  
DECK BARS 32' x 32' x 34"  
STIFFENERS 32' x 32' x 30 OR 4' FLANGES 2'6" APART

HATCH SIDES XENDS .36"  
BULB FORE & AFTER 8' x 4"  
WITH 2 ANGLES



52 GIRDER  
ANGLE FRAMES 52' x 32' x 36"  
REVERSE FRAMES 3' x 32' x 36"  
OR BULB ANGLES  
72' x 32' x 42"  
SPACED 24' APART

No 8 BULKHEAD  
PLATING .36 TO .34" FRAME ANGLE 5' x 5' x 50"  
DECK ANGLE 32' x 32' x 36"  
VERTICAL STIFFERS 8' x 32' x 46' B.A. LOWER PART 7' x 3' x 40' BULB  
ANGLES ABOVE W/F. PLAT. SPACED 20' APART.  
HORIZONTAL STIFFER WHERE SHOWN 72' x 32' x 42' BULB ANGLE

No 42 BULKHEAD  
PLATING .34" TO .30" FRAME & TANK TOP  
ANGLE 5' x 5' x 46". DECK ANGLE 32' x 32' x 34"  
BULB ANGLE STIFFENERS 92' x 32' x 50' 26' APART

SEE SECTION FOR SCANTLING OF LONG BULKHEADS.

No 74 & 97 BULKHEADS  
PLATING .34" TO .30" FRAME & TANK TOP  
ANGLE 5' x 5' x 46". DECK BAR 32' x 32' x 34"  
BULB ANGLE STIFFENERS 9' x 3' x 50' 26' APART

BULB ANGLE FRAMES 10' x 32' x 56" TO EXTEND TO SHELTER & UPPER DECKS ALTERNATELY  
SEE NOTE ON SECTION  
FRAMES SPACED 25' APART

No 141 BULKHEAD  
PLATING .34" TO .30" FRAME & TANK  
TOP ANGLE 5' x 5' x 48". DECK BAR 32' x 32' x 34"  
BULB ANGLE STIFFENERS 11' x 32' x 50' 26' APART

No 173 BULKHEAD  
PLATING .38" TO .30" FRAME 5' x 5' x 52"  
DECK ANGLE 4' x 4' x 36"  
STIFFENERS LOWER PART 8' x 3' x 44' B.A. 20' APART  
ABOVE W/F. PLAT. 62' x 3' x 40' B.A. 20' APART  
WITH 3 VERTICAL WEBS FORMING CHAIN LOCKER  
SIDES & DIVISION  
HORIZONTAL STIFFER AS SHOWN 72' x 32' x 42' B.A.

BULB ANGLE FRAMES  
62' x 32' x 42"  
SPACED 24' APART

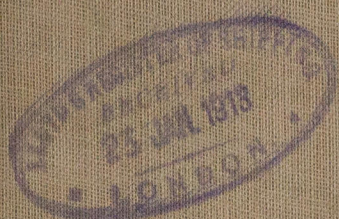


SUNDERLAND

AMENDED PROFILE

J. L. THOMPSON & SONS LD

YARD No 1494



"VINLAKE"  
EX.

CSIKOS

EX

NORTH PACIFIC

SLD. RPT. 25689



© 2021

Lloyd's Register  
Foundation

W268-0130