

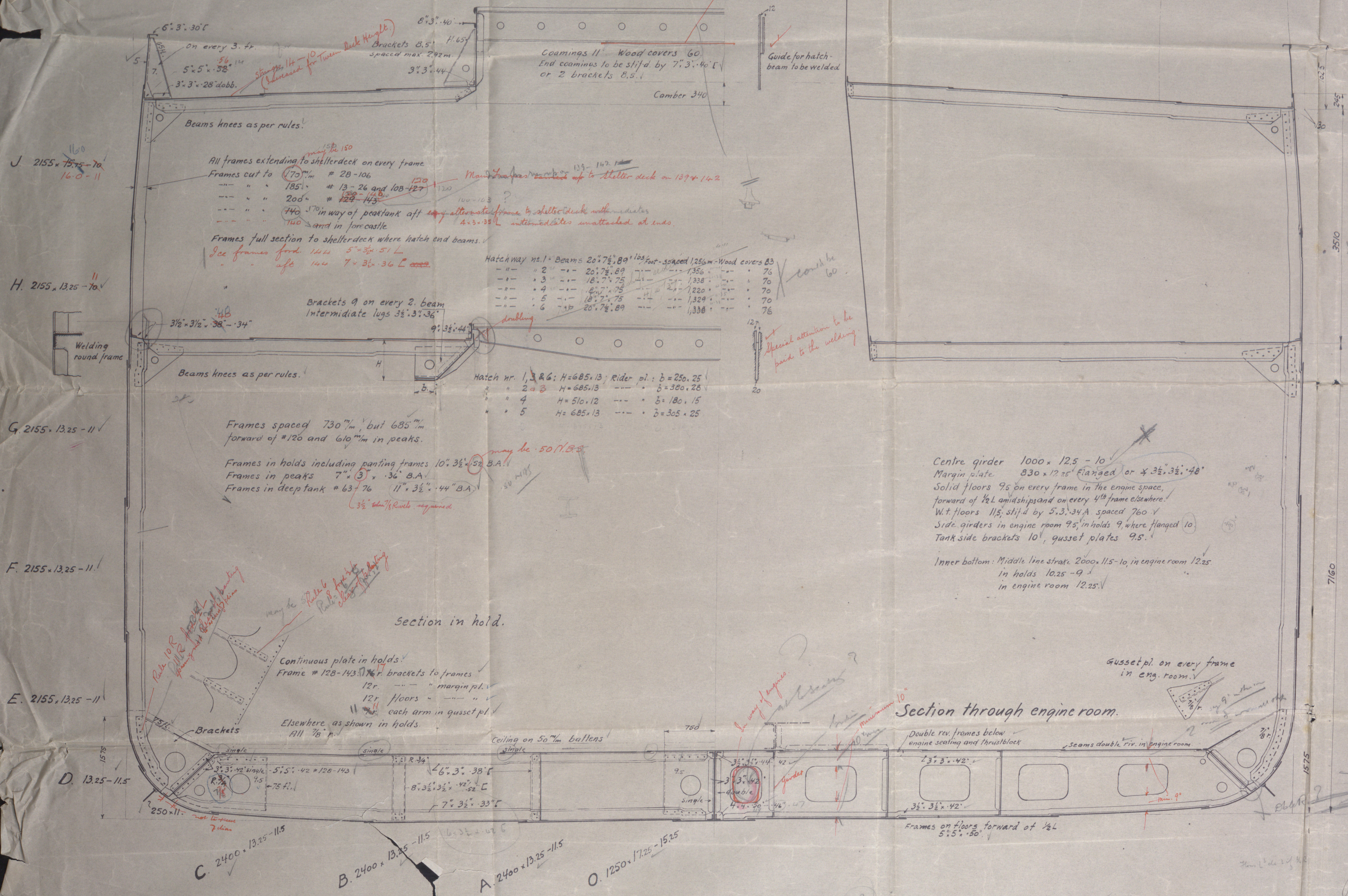
Engine casing, protected.
Plating: 75
stiffeners: 75.65.754 on flange 90
Spaced 760 a.

Hatchway no. 1 Beams 18" 7" 75" 125" spaced 1.25m.
--- 2 --- 18" 7" 75" --- 1.25m
--- 3.5.6 --- 16" 6" 62 --- 1.338
--- 4 --- 18" 7" 75 --- 1.460
50 flat welded (intermittent welds)
to underside of 3 forward beams N° 2 Hatch.

Numerals
 $L \times D = 109.12 \times [7.16 + 2.45] = 1048.6$
 $L \times [B + D] = 109.12 \times [17.37 + 9.61] = 2944.1$
 $L/D = 109.12/10.67 = 10.2$

Equipment number
 $L \times [B + D] = 109.12 \times [17.37 + 10.67] = 3059.7$
Forecastle $\frac{3}{4} \times 7.16 \times 1.91 = 4.2$
Casings, houses $\frac{1}{2} \times 18.25 \times 4.57 = 41.7$
House aft $\frac{1}{2} \times 9 \times 2.25 = 9.1$
3/20.8

Equipment [letter, V']
3 stockless bower anchors 171 c.w.t. coll
1 stream anchor 164 -- excl. stock
270 fathoms chain cable $2\frac{3}{16}$ -- dia. stud. link.
165 metres flex. steel wire 1082 circ.
220 -- -- 108 " } 6.24 wires.
2.165 -- -- 63 "
2.165 -- -- 57 "



- ✓ 1000 x 12.5 - 10
- ✓ 830 x 12.25 Flanged or 4" 3" x 32" 40"
- ✓ Solid floors 95 on every frame in the engine space, forward of 1/2 L amidships and on every 4th frame elsewhere.
- ✓ W.t. floors 115, stiff by 5.3" 34A spaced 760
- ✓ Side girders in engine room 95, in holds 9, where flanged 10.
- ✓ Tank side brackets 10, gusset plates 95.
- ✓ Inner bottom: Middle line strake 2000, 115-10, in engine room 12.25. in holds 10.25 - 9. in engine room 12.25.
- ✓ Gusset pl. on every frame in eng. room.
- ✓ Frames on floor forward of 1/2 L 5" 5" x 50"
- ✓ Side girders where bracket floors.
- ✓ Side girders in engine space.
- ✓ Side girders forward of 1/2 L amidships.

VIVA
K.G. MELDAHL

Class: Lloyds 100. A.1 +
strengthened for navigation in ice
with a hull and corresponding to a
hull not exceeding that contemplated
by the Rules for a B.S.S. Vessel.
with tonnage opening.

Dimensions.
Length between PP. 109.12 metres
Breadth moulded 17.37
Depth --- to 2nd deck 7.16
Height of superstruct 3.51

5/287,200

MIDSHIP SECTION

SKALA: 1:25

ERST FOR S. 11303

3/2 FREDRIKSSD MEKVERKSTEDT ERST AV

WZ 70040

1019

Lloyd's Register Foundation