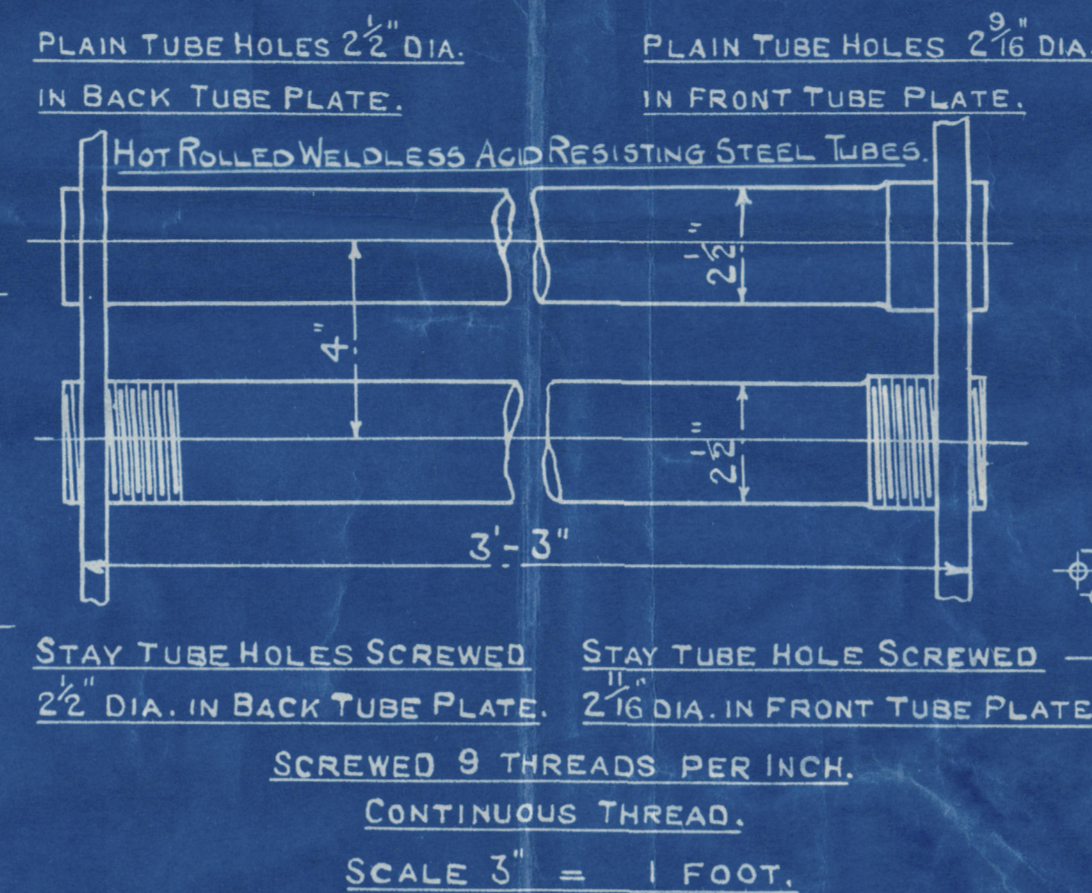
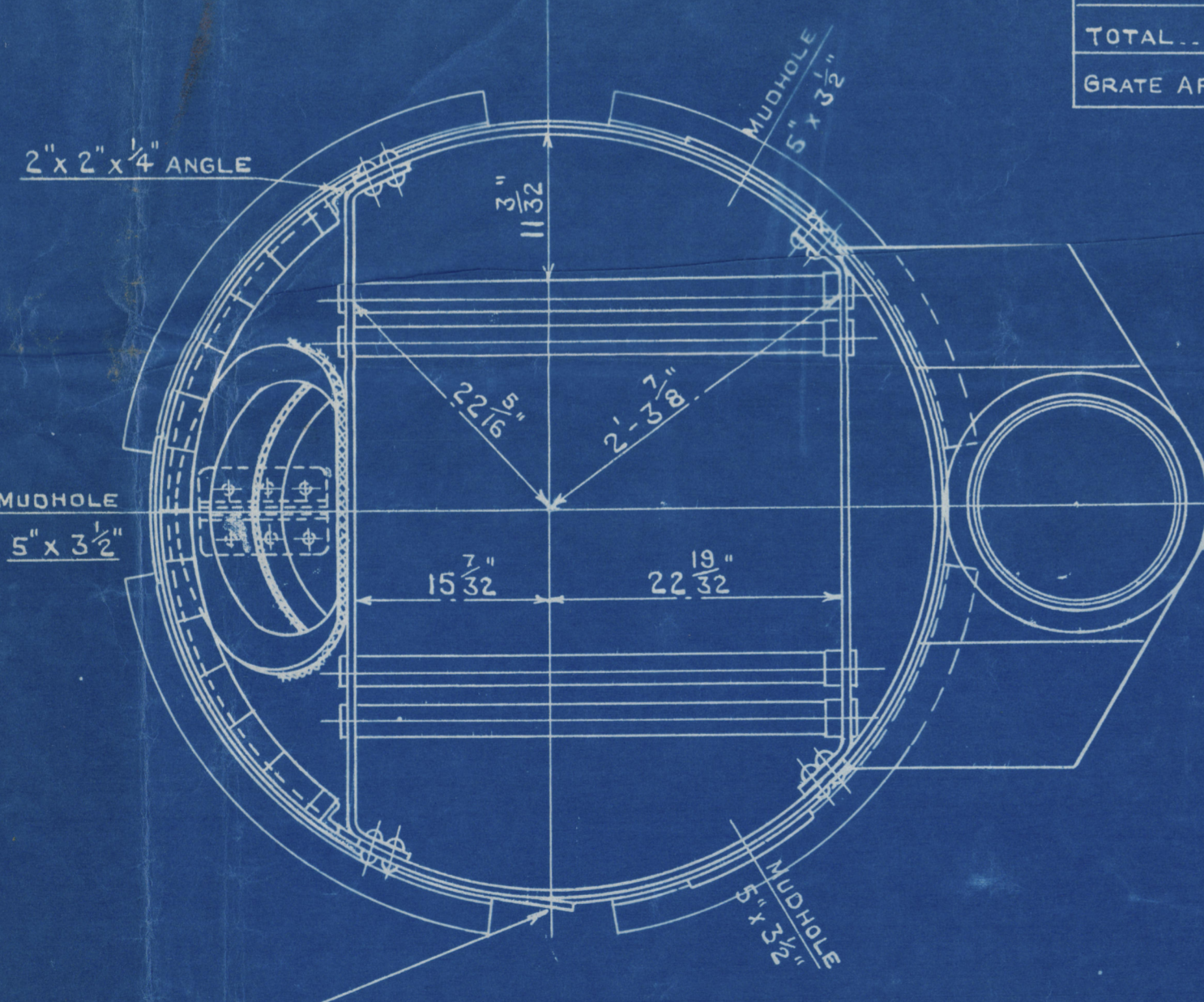


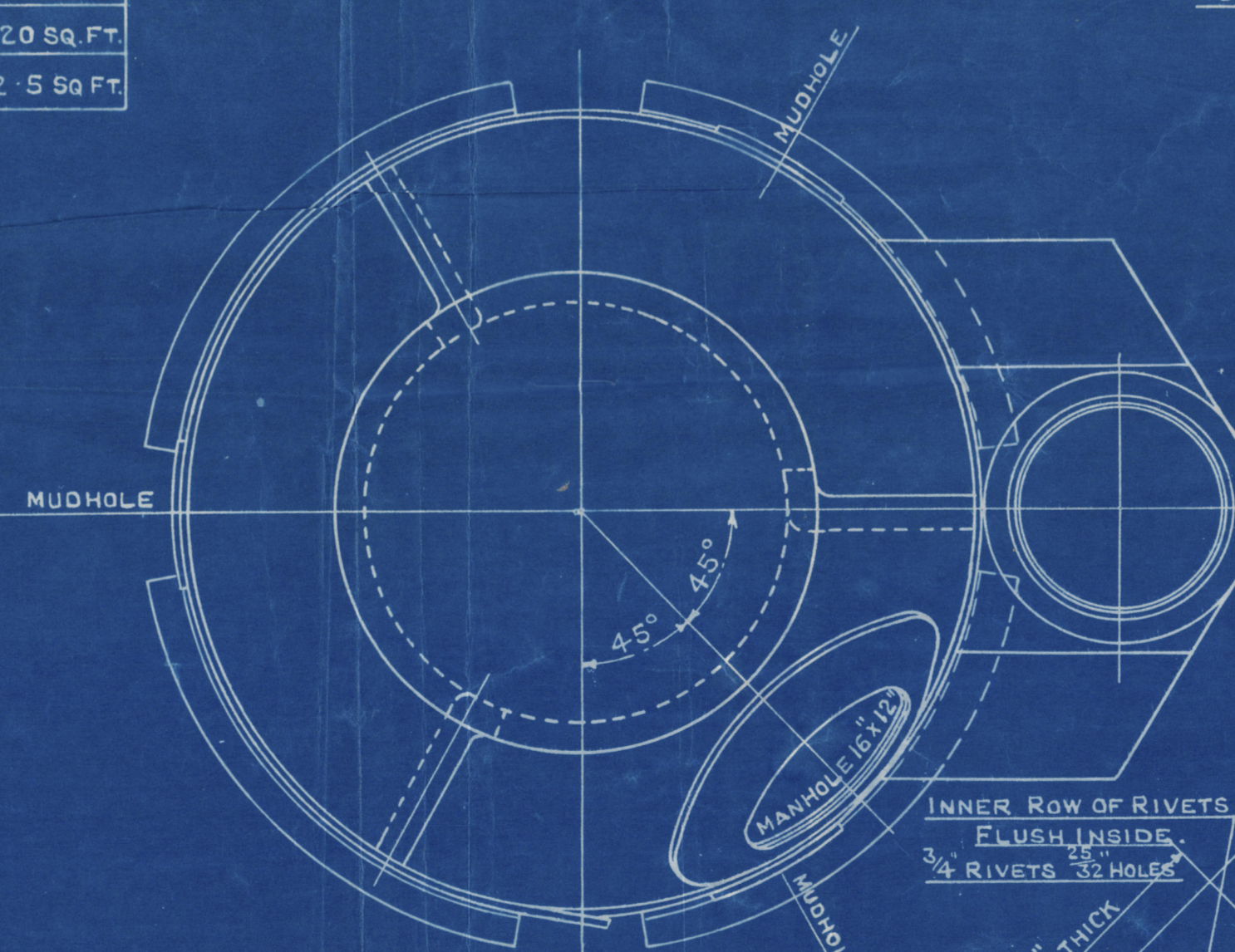
2 MAY 1938

[illegible]

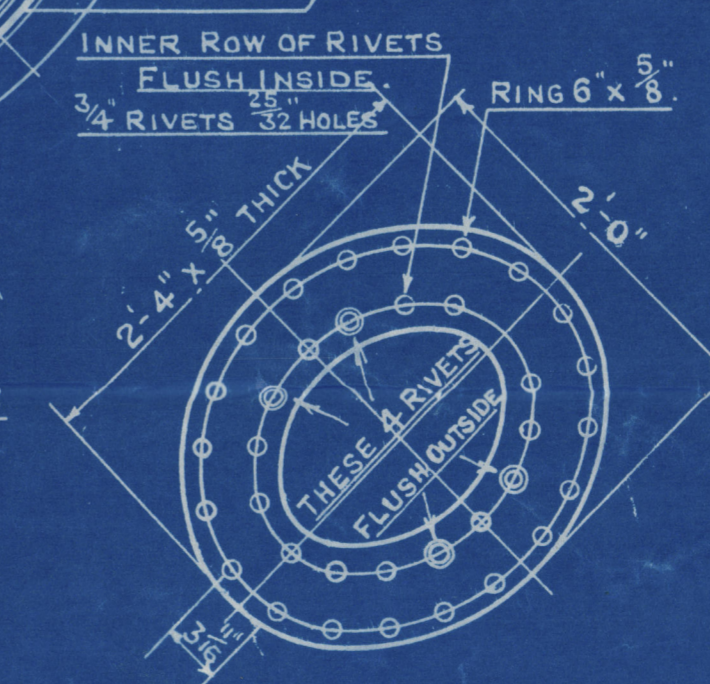
MANHOLE & MUDHOLE DOORS TO HAVE STUDS
SCREWED THROUGH PLATES & FITTED WITH
NUTS INSIDE.



JOINT IN TOP & BOTTOM STRAKES OF SHELL



PLAN OF SHELL CROWN JOINTS



EVAPORATION FROM AND AT 212°F.

HEAVY STEAMING.....1820 LBS. PER HOUR.

HEAVY STEAMING-----1820 LBS. PER HOUR.

EASY STEAMING.....1380 LBS. PER HOUR.

EASY STEAMING-----1380 LBS. PER HOUR.

5'-0" X 11'-3" X 220# HS X 100 LBS.W.P.

SCALE 1 INCH TO 1 FOOT

SIEMENS MARTIN MILD STEEL PLATES
TENSILE TESTS

PLATES NOT EXPOSED TO FLAME OR FLANGED.....28 TO 32 TONS

PLATES EXPOSED TO FLAME OR FLANGED & RIVETS.....26 TO 30 TONS.

23716

DRAWING N°20555

COCHRAN & CO., ANNAN, LD.

Boiler No. 14124

Drawing No. 23716

W.P. - 100 LBS

GLASGOW REPORT No. 60352

Julagi

H. Kg. 8391.

© 2020
W266-0073