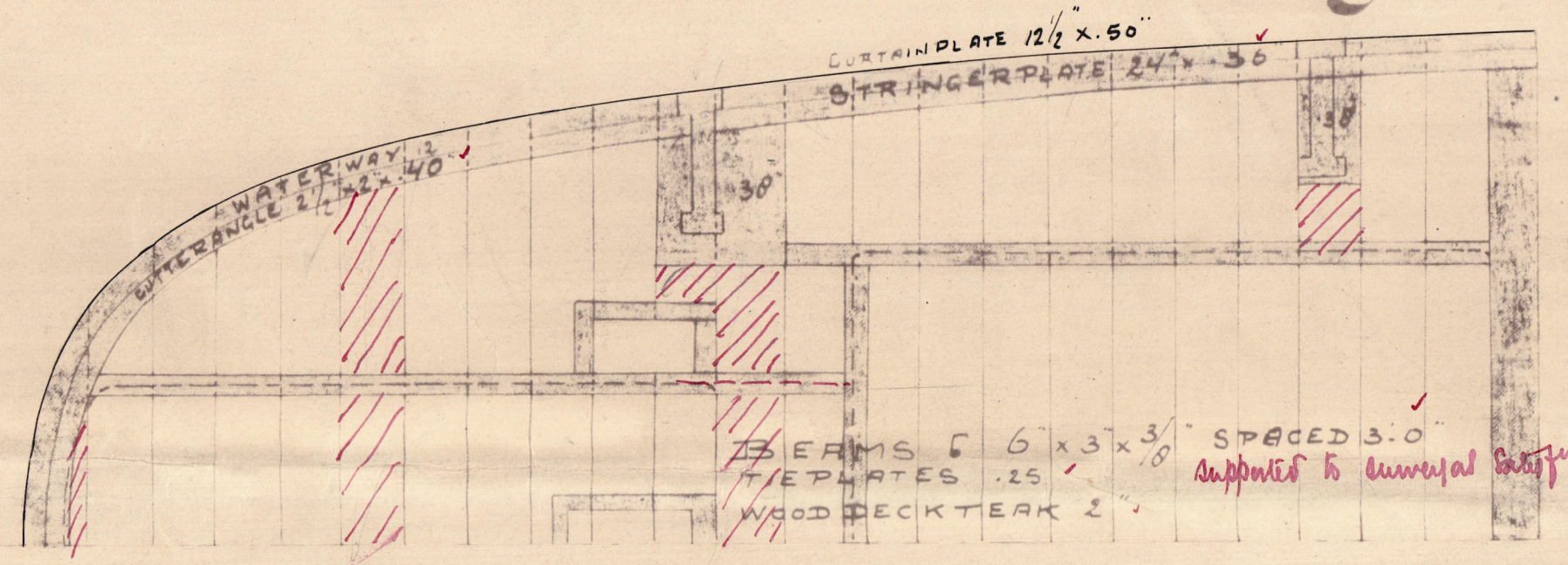


No 146. Single screw cargo steamer for the "Java-China-Japan Lijn."

Longitudinal and Deckplans.

Scale 1/8" = 1'-0"

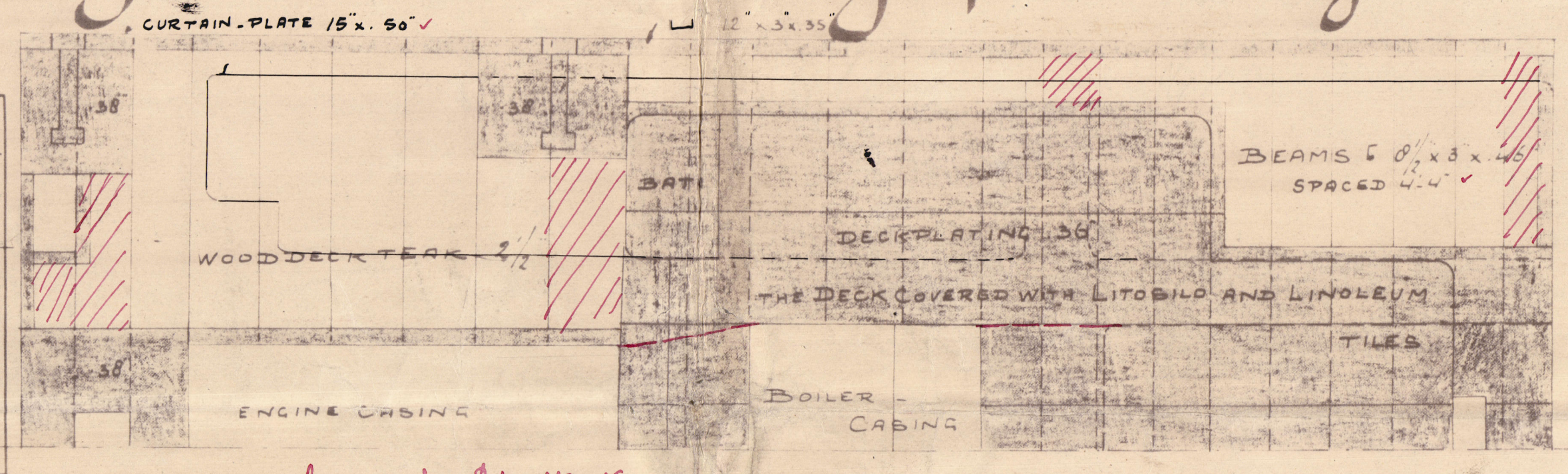
30.3.15
28.4.15
16.11.15
29.11.15
16.5.16



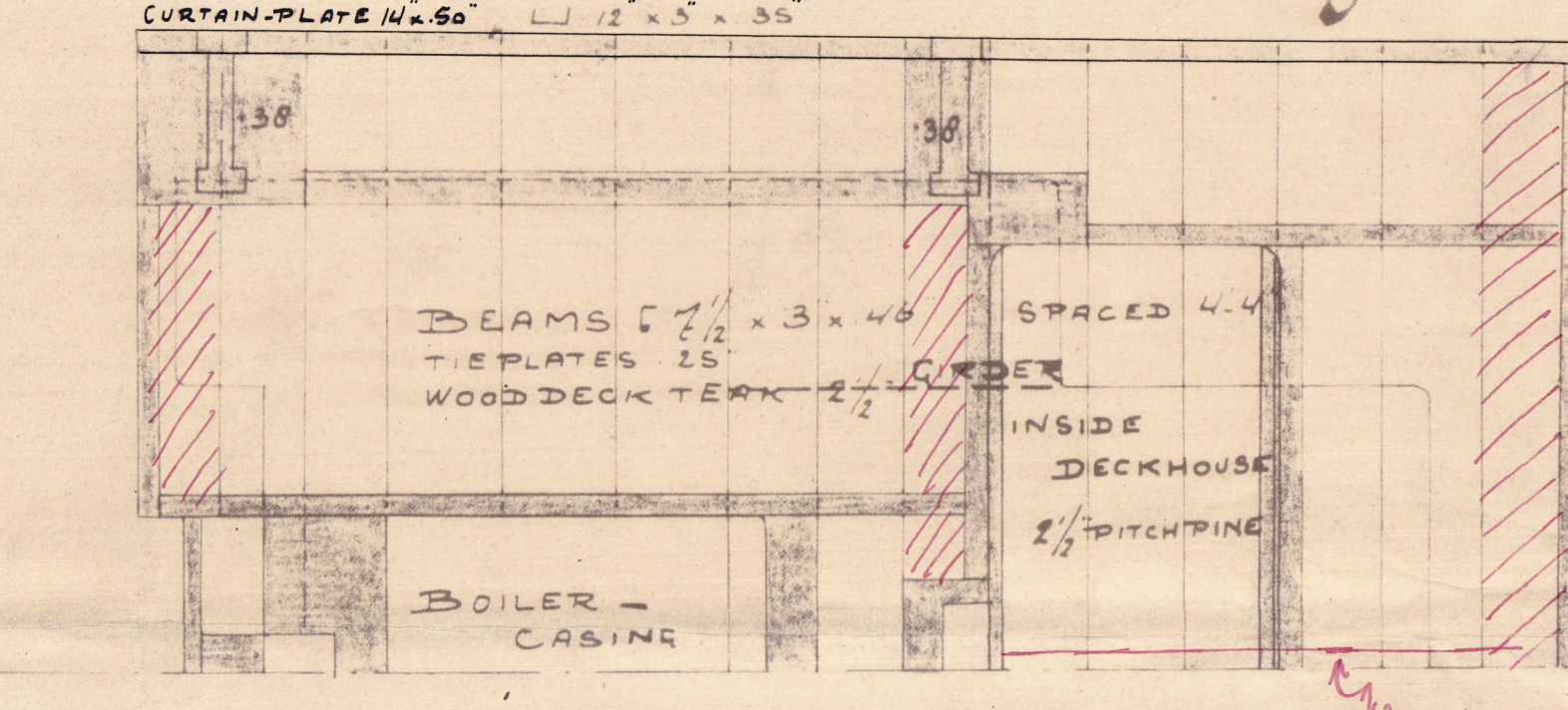
Boatdeck.

PRINCIPAL DIMENSIONS	
LENGTH BETWEEN PERPENDICULARS	420.0'
BREADTH MOULDED	54.0'
DEPTH MOULDED TO UPPERDECK	30.0'
HEIGHT OF TWENTY DECK	7.0'
POST & BRIDGE DECK	7.0'
FORE CASTLE	7.6'
ROUND OF BEAM	13
RISE OF FLOOR	13

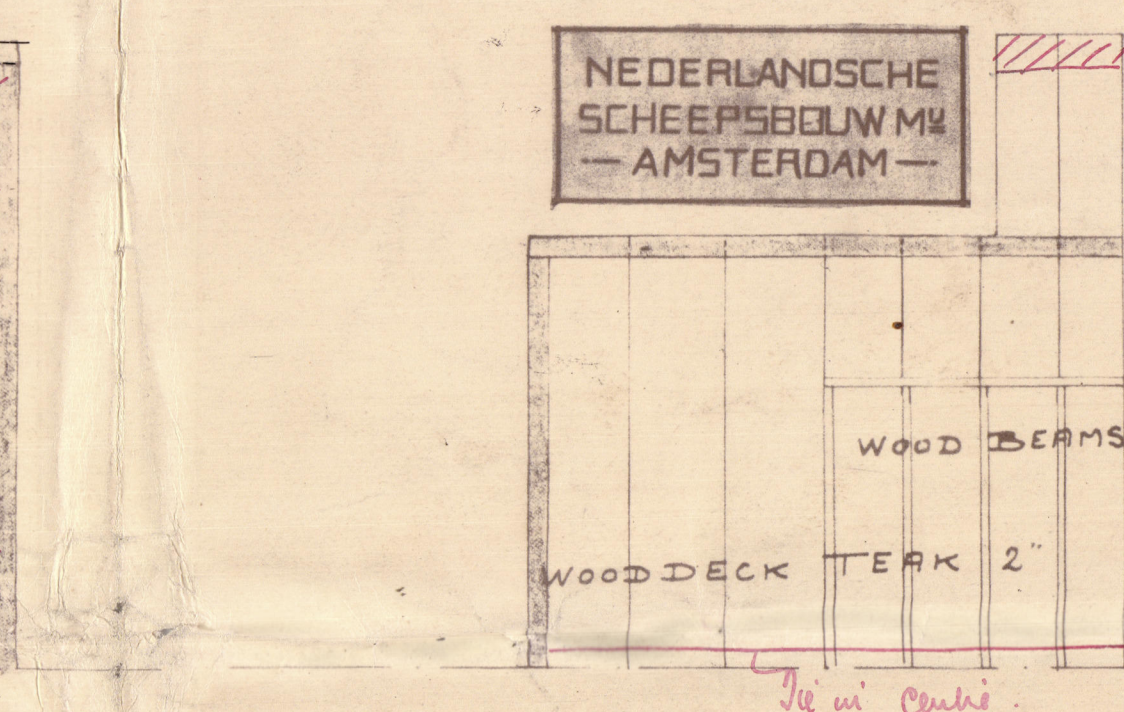
LLOYD'S NUMERALS FOR CLASS 100 A1	
BREADTH	B. 54.0
DEPTH	D. 30.0
TRUNKVERSE NUMBER	B.D. 842
LENGTH BETWEEN PERPENDICULARS	L. 420.0
LENGTH OF DECK	L.D. 352.60
4 FOR HOLDS III & IV	10.40
4 FOR REMAINDER HOLDS	18.70
5 TO UPPERDECK	14
5 TO BRIDGE DECK	11.2



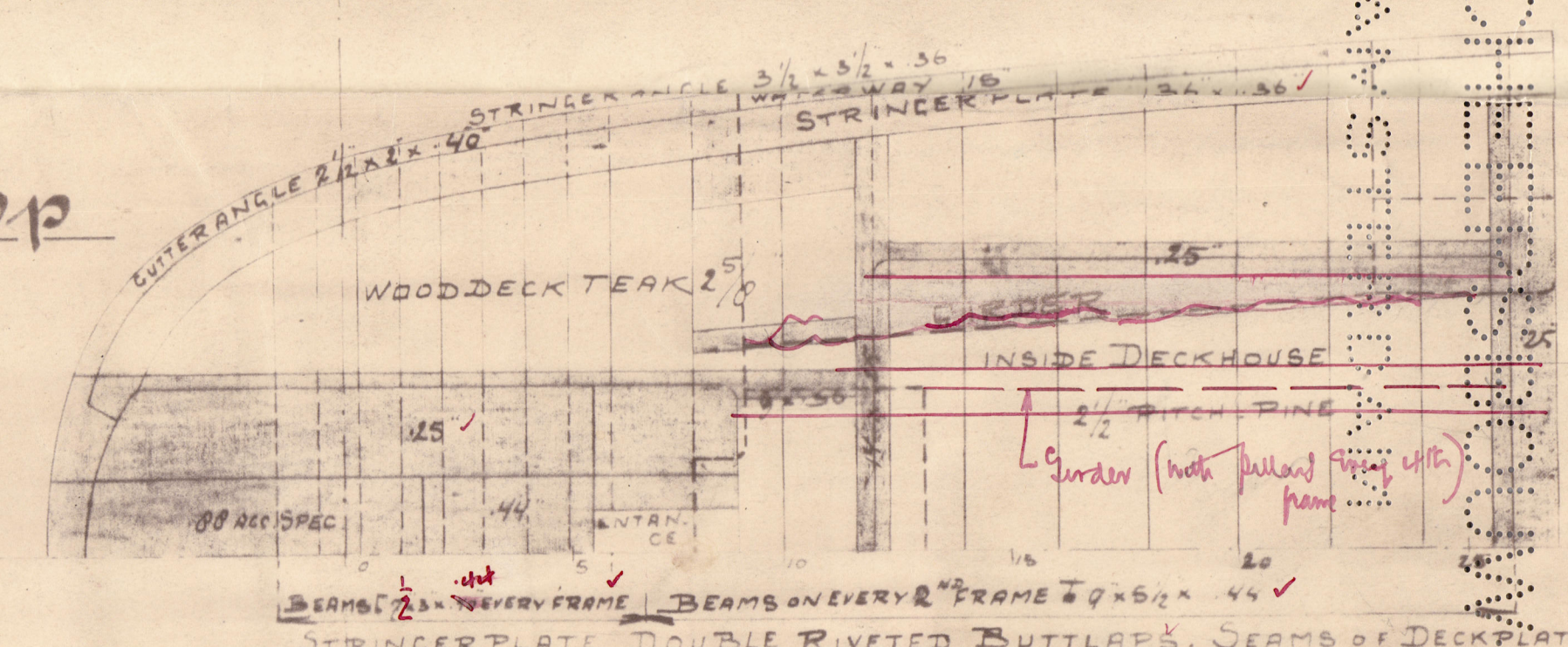
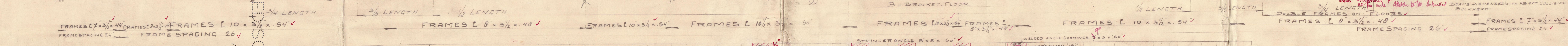
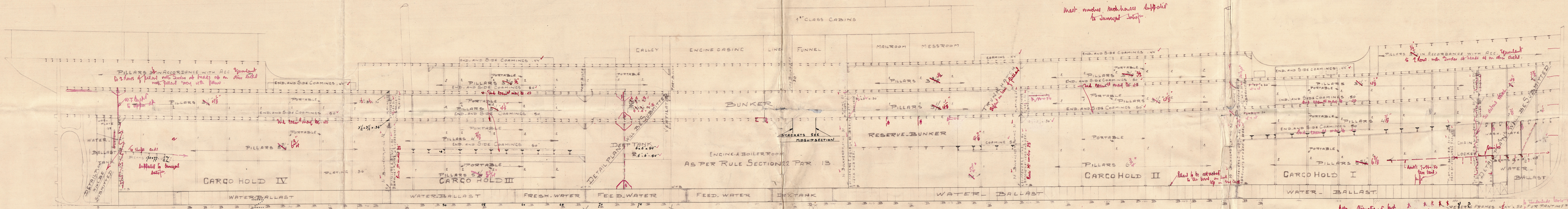
Plan of upper deck
showing accommodation



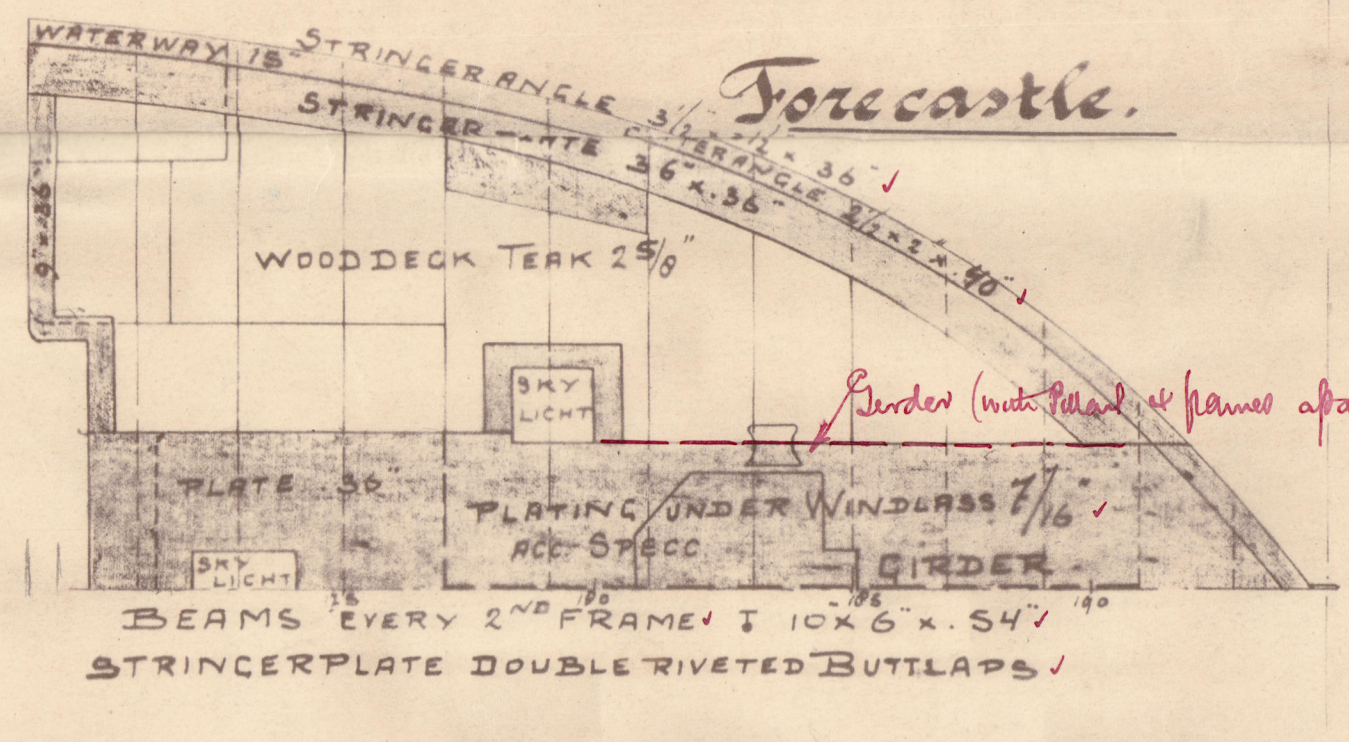
Navigating Bridge.



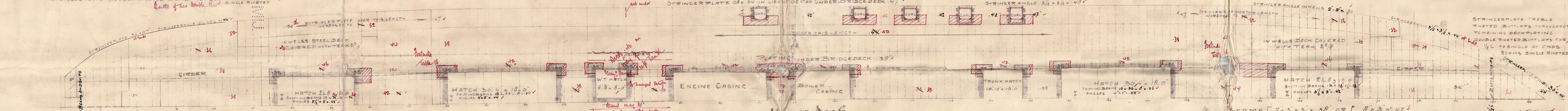
Flying Bridge.



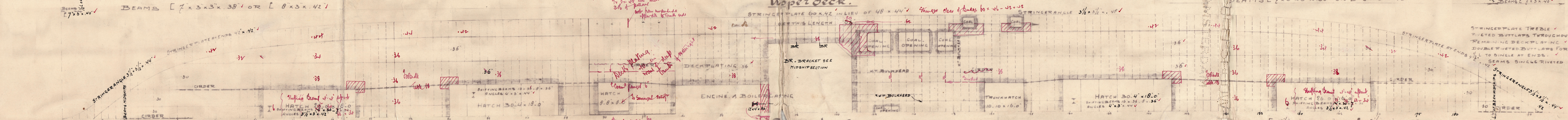
Poop



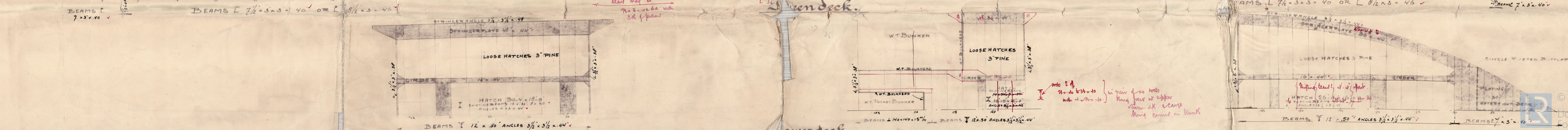
Fore-castle.



Upper deck.



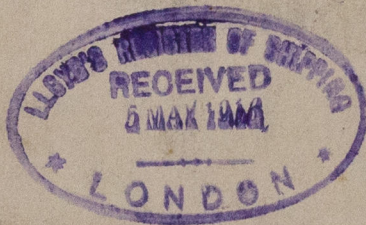
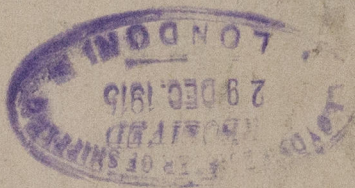
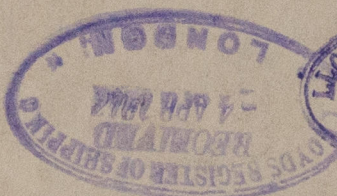
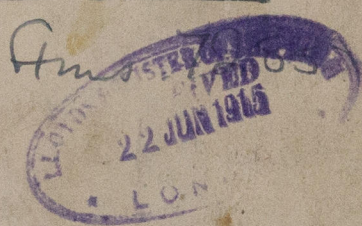
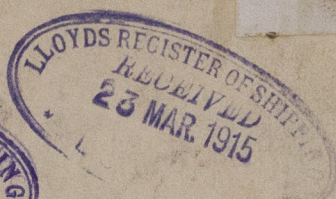
Lower deck.



Over-deck.

30.3.15

Java. China. Japan to
Profile & deck plan
Tjisalak



w265-0140



© 2020

Lloyd's Register
Foundation