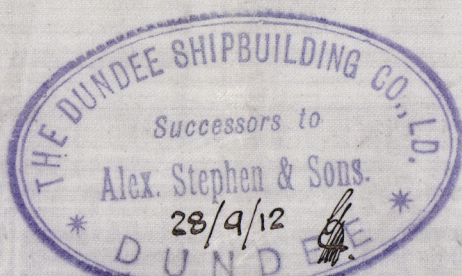


3.10.12
29.10.12
24.12.12



— LLOYD'S NUMERALS. —
TRANSVERSE N° = (B+D) = 36.0+17.5 = 53.5
LONGITUDINAL N° = L(B+D) = 260 x 53.5 = 13910
LENGTH ÷ DEPTH = 14.55 TO UPPER DECK. 9.51 TO BRIDGE DECK.
d = 14.66.

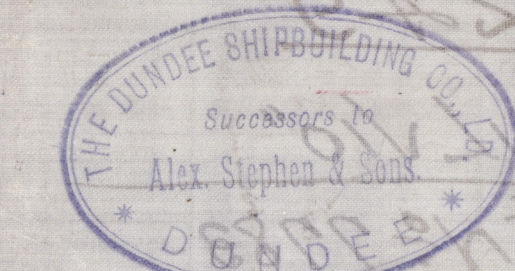
EQUIPMENT NUMBER.
LONGITUDINAL NUMBER = 13910
POOP & BRIDGE 196 x 8 x 7.5 = 1172
FORECASTLE 31.5 x 8 x 7.5 = 189
DECKHOUSE 53.5 x 7 x 5 = 1872
EQUIPMENT N° = 15447 LLOYD'S = 15200
15609

S. S. N° 249. MIDSHIP SECTION. SCALE 1/2" = 1 FOOT.

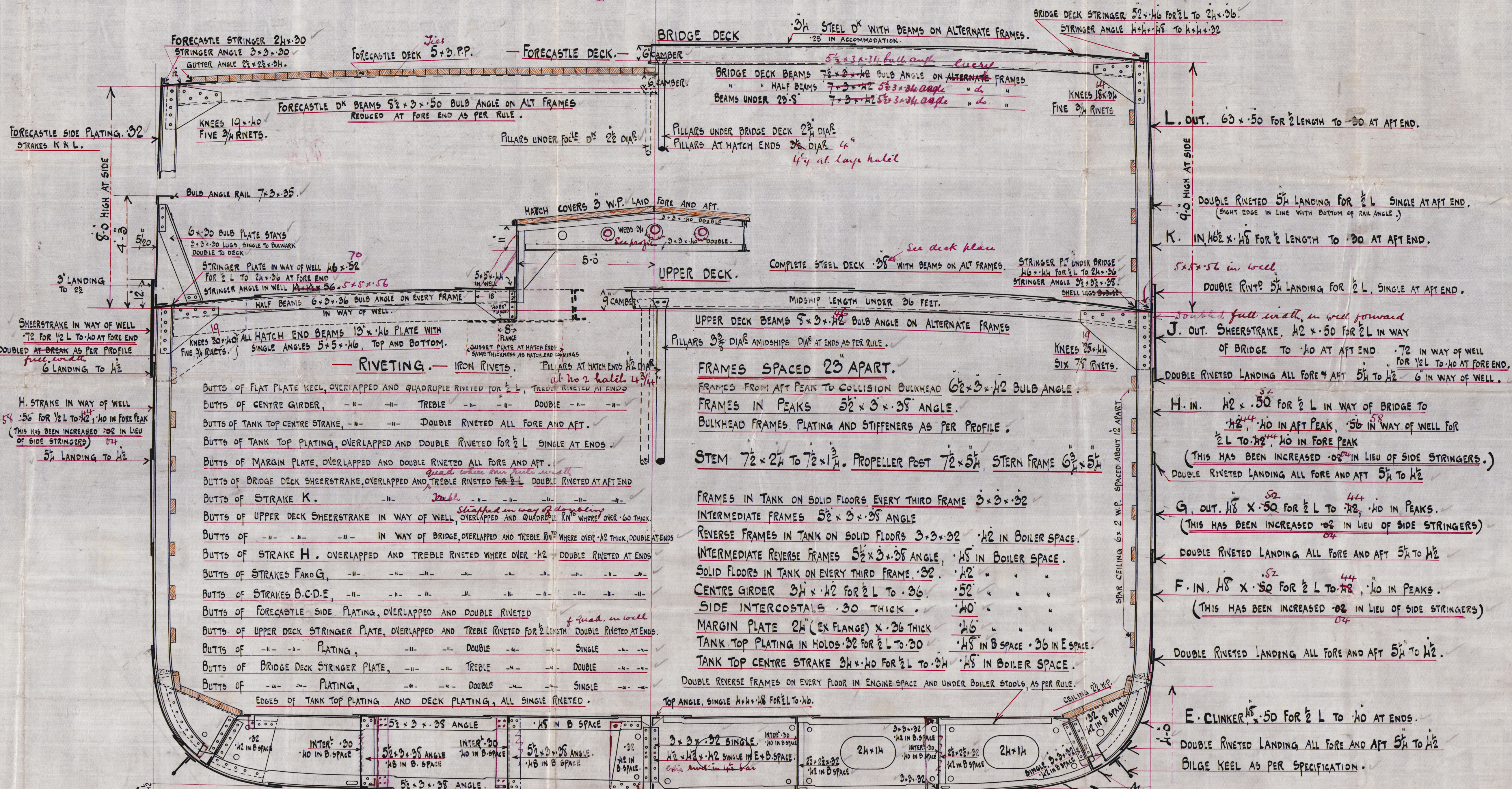
LENGTH BET PERPENDICULARS. 260'-0"
BREADTH MOULDED. 36'-0"
DEPTH MOULDED. 17'-6"
TO CLASS 100 A1 AT LLOYDS.

EQUIPMENT.

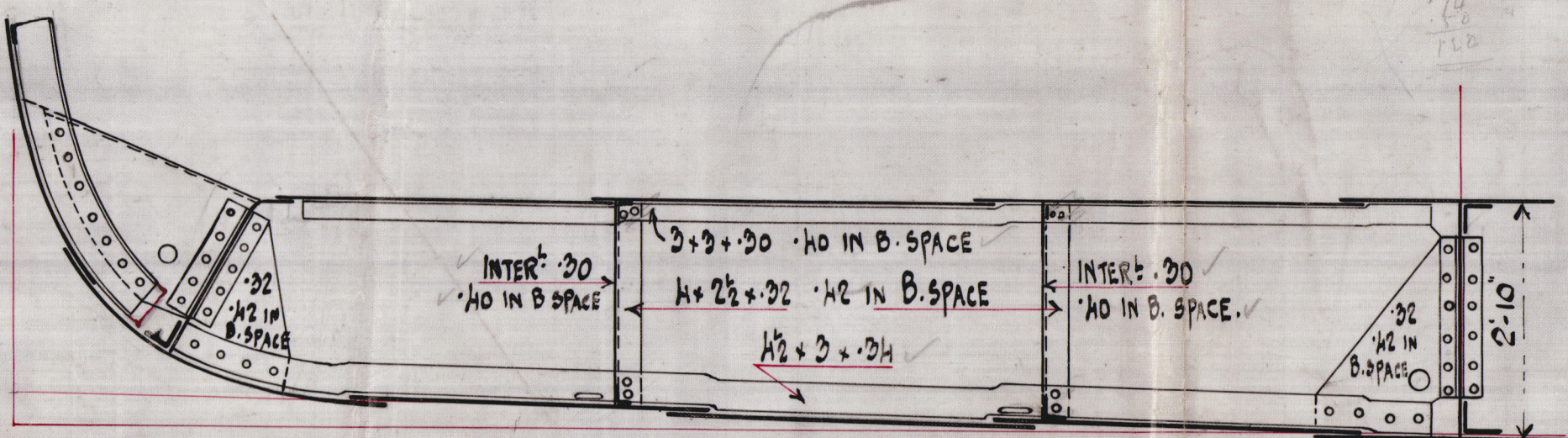
- 2 BOWER ANCHORS EACH 33 CWTs STOCKLESS
- 1 ANCHOR OF 25 CWT
- 1 STREAM " " 82 " EX STOCK.
- 1 KEDGE " " 1/2 " " "
- 240 FATHOMS 1 1/2" STUD CHAIN CABLE.
- 75 " 1/2" " " STEEL WIRE STREAM ROPE.
- 90 " 3/4" " " TOW LINE.
- 2 HAWERS EACH 90 FATHOMS 6"
- 2 WARPS " " " " 5"



UPPER DECK BEAMS IF ON ALTERNATE FRAMES.	
WHOLE BEAMS	8 x 3 x 1/2" BULB ANGLE ON ALTERNATE FRAMES.
HALF "	7 x 3 x 1/2" " " " " " "
WHOLE BEAMS (UNDER 23-II)	7 x 3 x 1/2" " " " " " "
WHOLE BEAMS IN FOREWELL	6 1/2 x 3 x 3/8" BULB ANGLE ON EVERY FRAME
HALF "	6 x 3 x 3/8" " " " " " "
(COMPLETE STEEL DECK 3/8" THICK)	
Increased at openings and in well	
UPPER DECK BEAMS IF ON EVERY FRAME	
WHOLE BEAMS	6 1/2 x 3 x 3/8" BULB ANGLE.
HALF BEAMS	6 x 3 x 3/8" " " " " " "
WHOLE BEAMS (UNDER 23-II)	6 x 3 x 3/8" " " " " " "
BEAMS IN PEAKS	5 x 3 x 3/4" ANGLE.
(COMPLETE STEEL DECK 3/8" THICK.)	
Increased at openings	



SECTION SHEWING INTERMEDIATE FRAMES, SOLID FLOORS EVERY 3RD FRAME.



SECTION SHEWING INTERMEDIATE FRAMES, IF SOLID FLOORS EVERY 2ND FRAME.

NOTE. FRAME LEGS MAY BE JOGGLED.

MIDSHIP SECTION

DUNDEE S.B. CO. LTD.

Nº 249

S.S. "SILVIO"

DUN. RPT. Nº 7783



© 2019

W262-0076

Lloyd's Register
Foundation