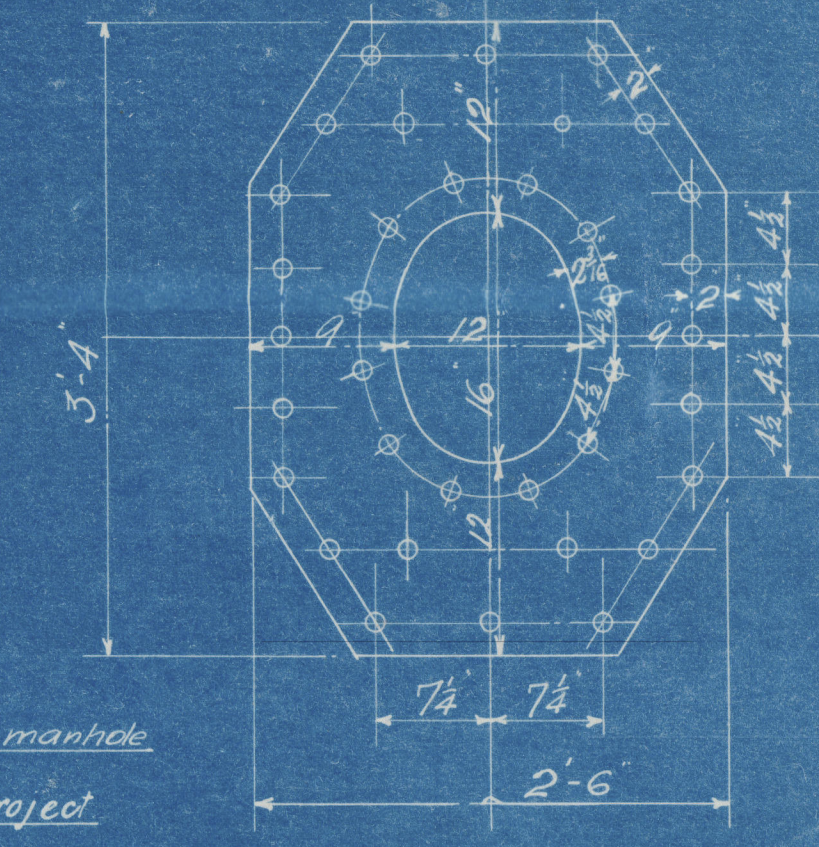


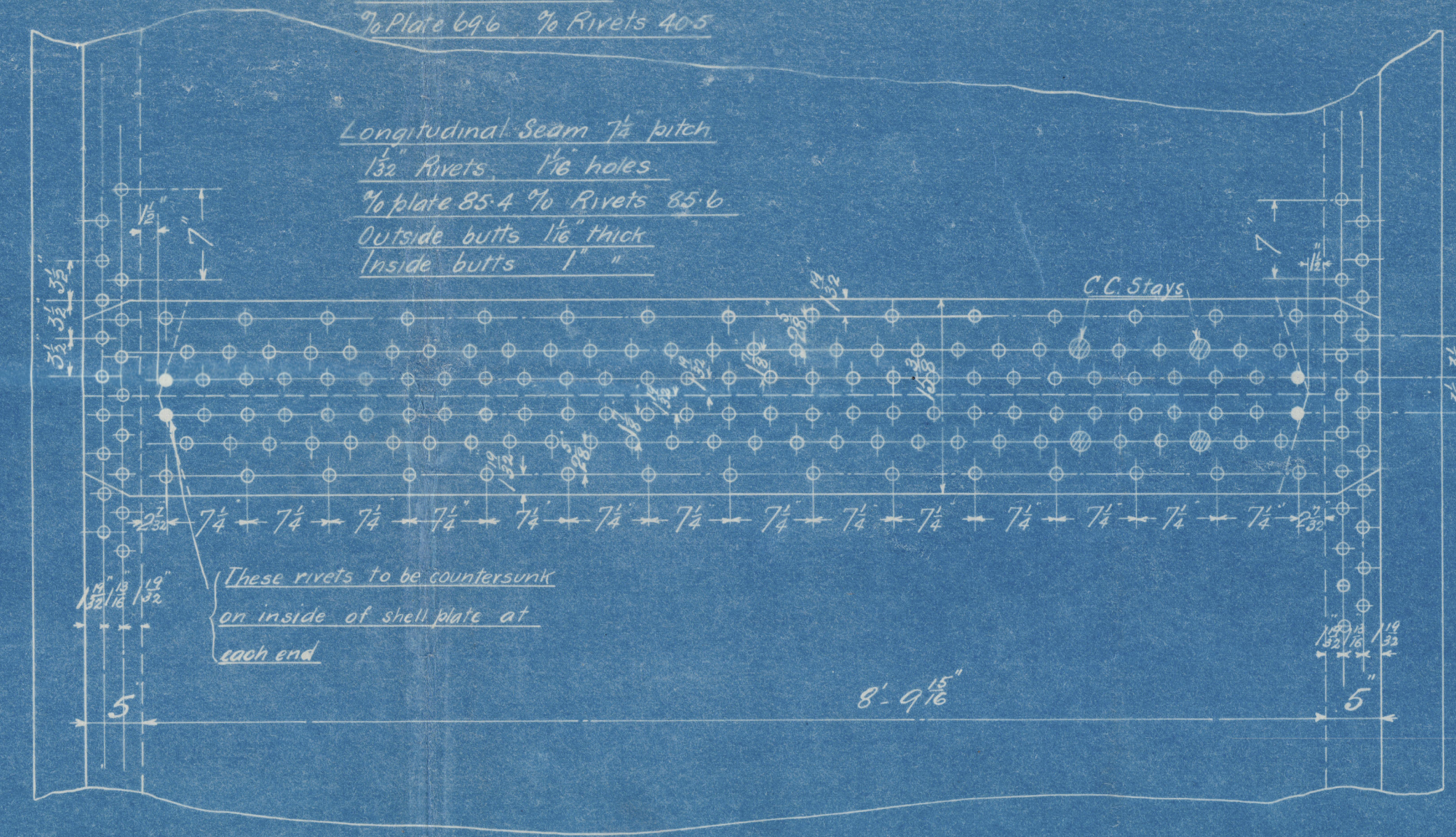
DIAM OF BOILER 13'-6" Inside
 LENGTH OF DO 10'-6"
 NUMBER OF TUBES 240
 LENGTH OF DO 6'-10" Between Flues
 DIAM 3 1/2" OF DO AREA THRO TUBES 10'-65 sq ft for 1 Boiler
 HEATING SURFACE IN TUBES 1395 sq ft for 1 Boiler
 TOTAL HEATING SURFACE 1748 sq ft for 1 Boiler
 FIRE BAR SURFACE
 DIAM OF SAFETY VALVES
 CUBIC FEET OF STEAM SPACE 310 for 1 Boiler
 WORKING PRESSURE 180 lb. LLOYDS

1/16" Doubling plate 1 1/2" rivets, 1/16" hole
 Fitted outside shell with short axis longitudinally



Note: Studs in manhole doors are not to project thru nuts when nuts are tightened up.

Circumferential Seam 3 1/2" pitch x 4" pitch above Centreline
 1 1/2" Rivets 1/16" holes
 7/16" Plate 6/16" 7/16" Rivets 40-5

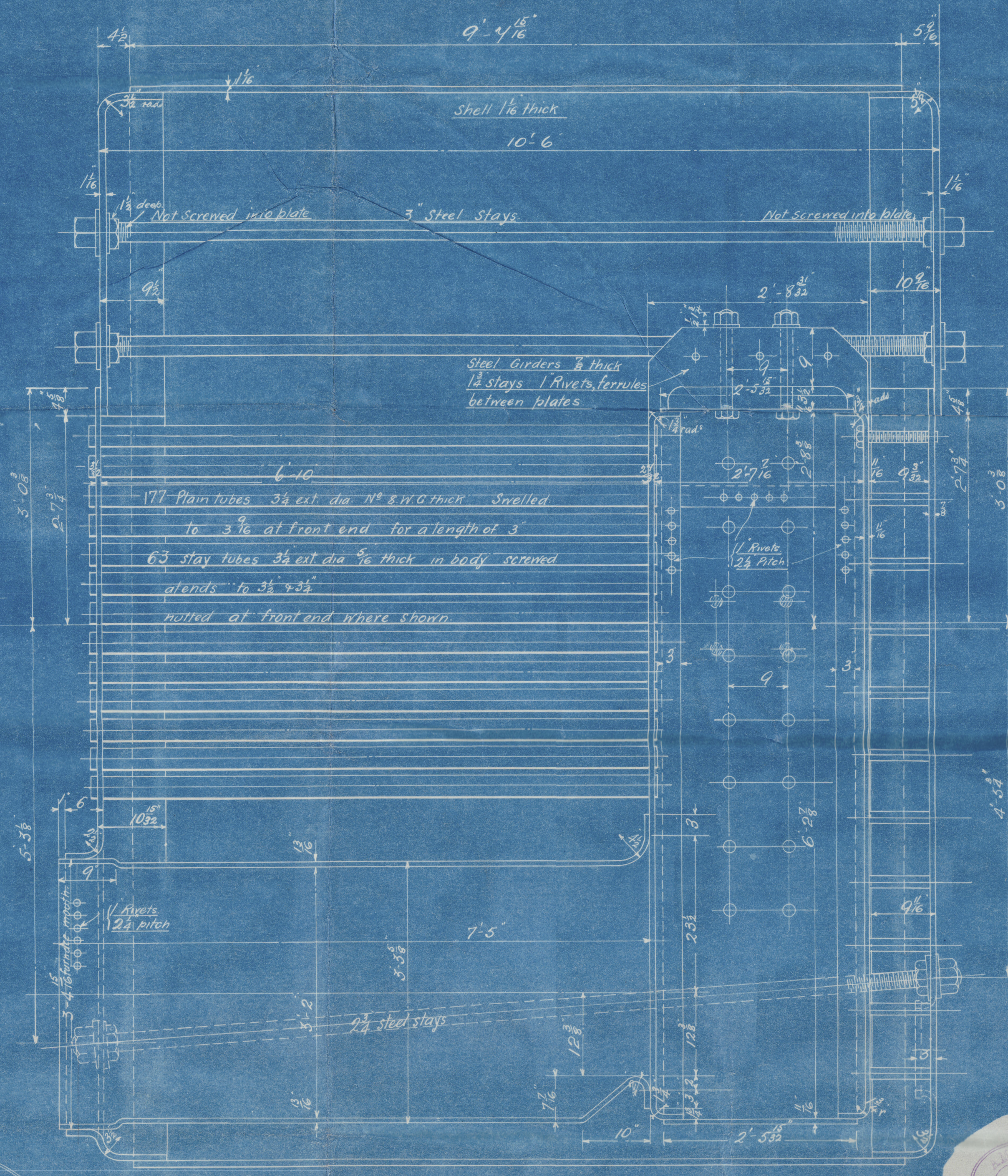
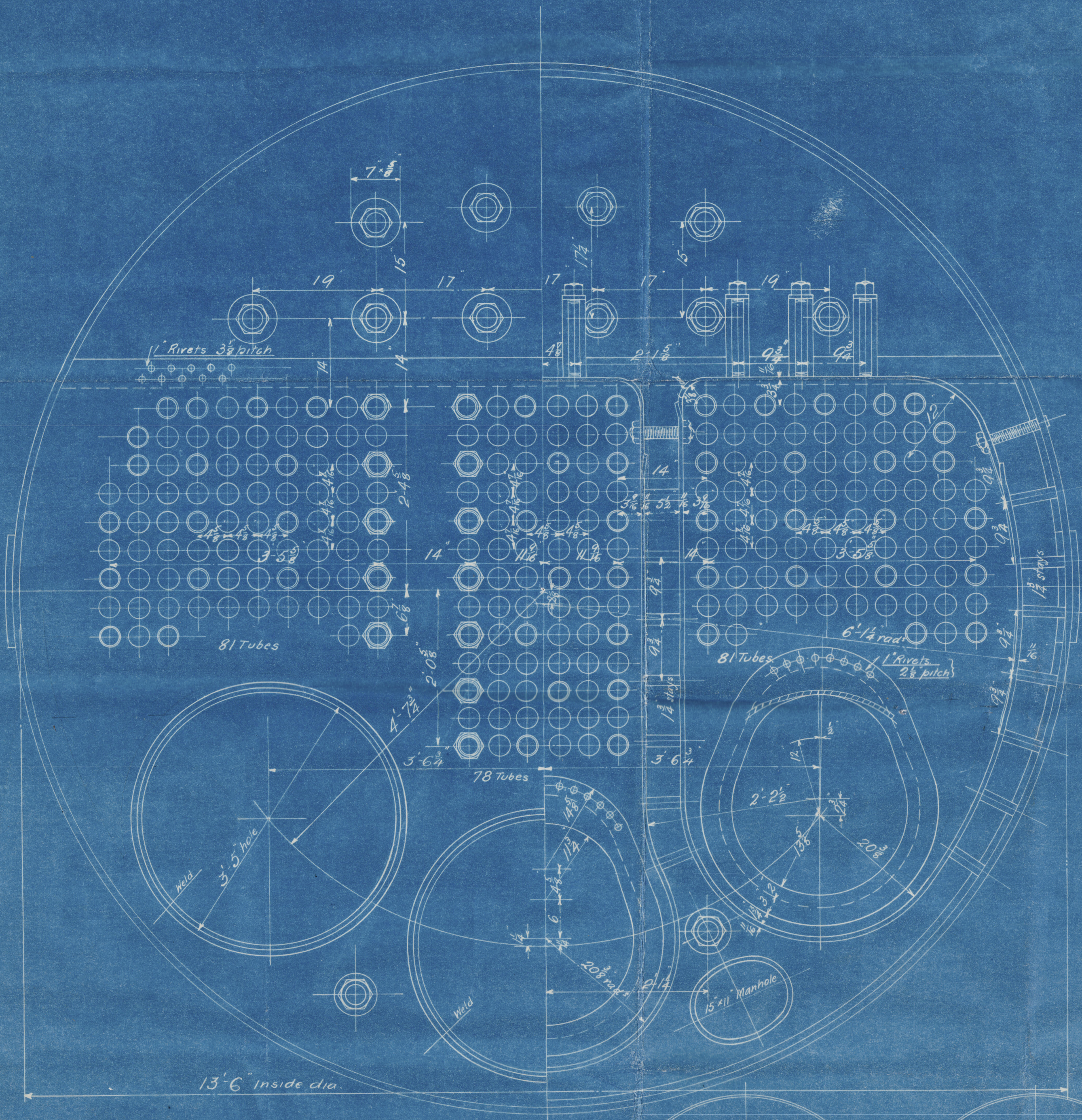


30/9/12

Note: The plates rivets & stays of steel by the Siemens-Martin's process.
 All rivet holes drilled throughout the boiler. Those in shell after the plates are bent.
 All flanged plates to be annealed after plates are bent.
 Stays are not to be welded. Tubes are of iron.
 Tensile Strength of shell plates and Bull Strops to be between 29-33 Tons per sq. inch.
 The Combustion Chamber stays are screwed into both plates and are fitted with nuts on inside of C.C. only except Marginal Stays on back of Boiler which have Nuts outside.

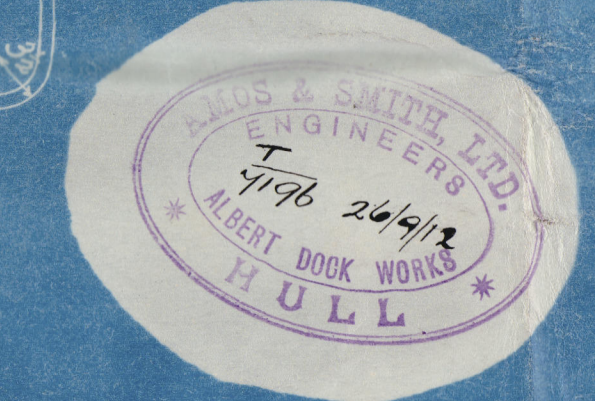
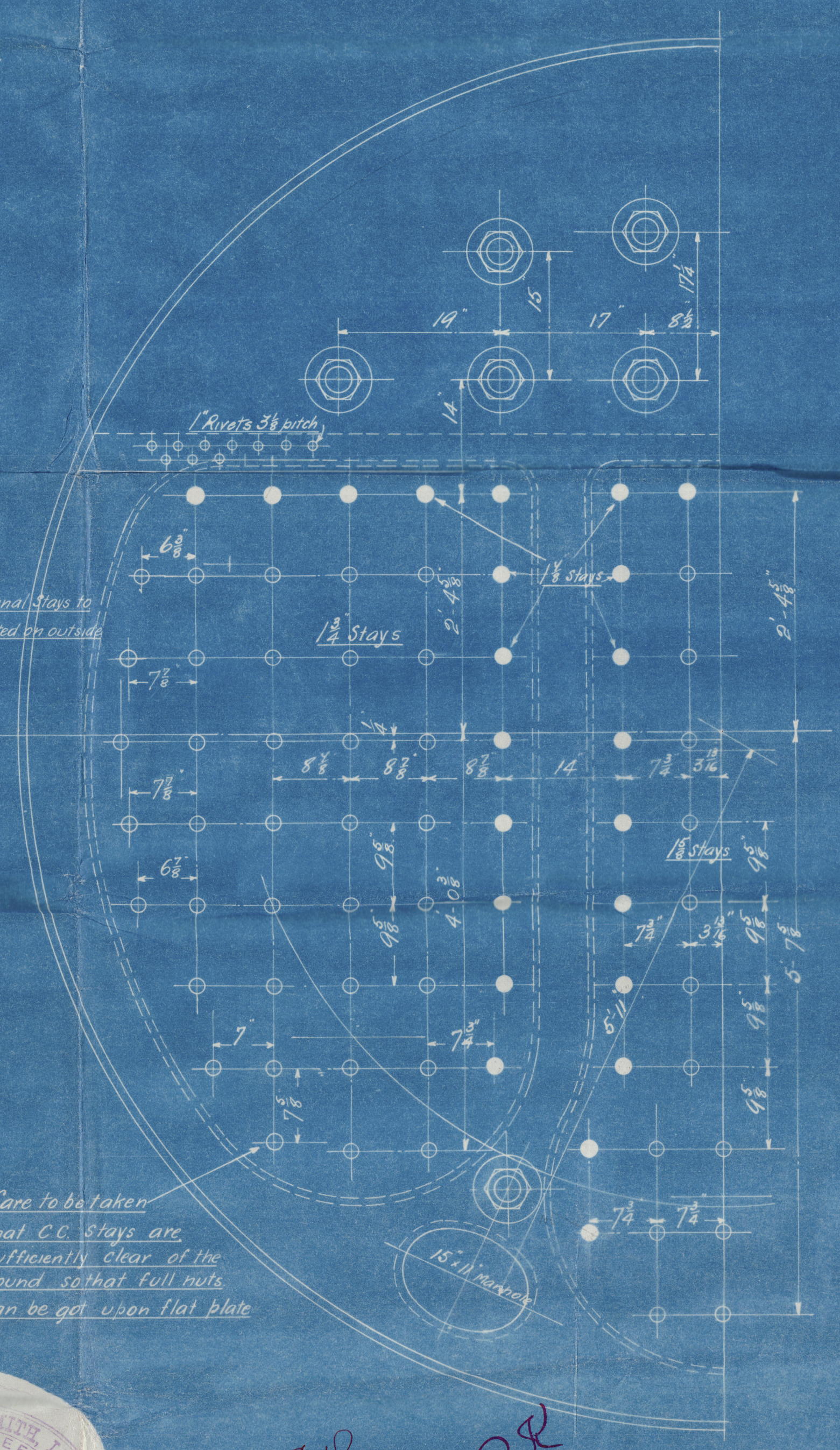
Particulars of staying

Stays	Dia	Area at Bottom	No of Threads
Steam space Stays	5"	6.1	6
Bottom	2 1/2"	5.08	6
C.C.	1 1/2"	2.394	10
"	1 1/2"	2.086	10
"	1 1/2"	1.46	10
Stay Tubes	3 1/2"	2.144	9



Marginal stays to be nutted on outside only.

Care to be taken that C.C. stays are sufficiently clear of the round so that full nuts can be got upon flat plate.



30.9.12
 30.9.12

2 STEEL BOILERS — ORDER NO 2293

Scale 1" = 1 Foot

10387

W262-0074(12)

TITLE Boiler
 ORDER NO 2293
 DATE 24/3
 DRAWN 24/3
 CHECKED 24/3
 SCALE 1" = 1 foot

W262-0074 (212)

From AMO

Sept 17 'H

Encl

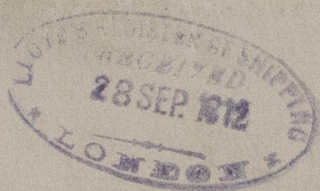
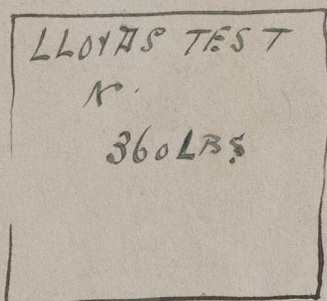
Lloyds Bank

Lloyds Bank Register
Foundation

ANOS+ SMITHS. BOILER

Nº. 2293

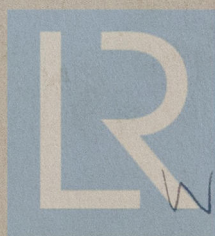
WP = 180 LBS



J. Silvio

~~Hull Report No. 26879.~~

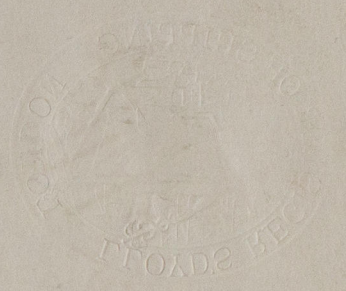
Gun 7783.



© 2019

Lloyd's Register
Foundation

W262-0079



LLOYD'S REGISTER
OF SHIPPING.
27 SEP. 1912
HULL

© 2019
Lloyd's Register
Foundation
W26 0074