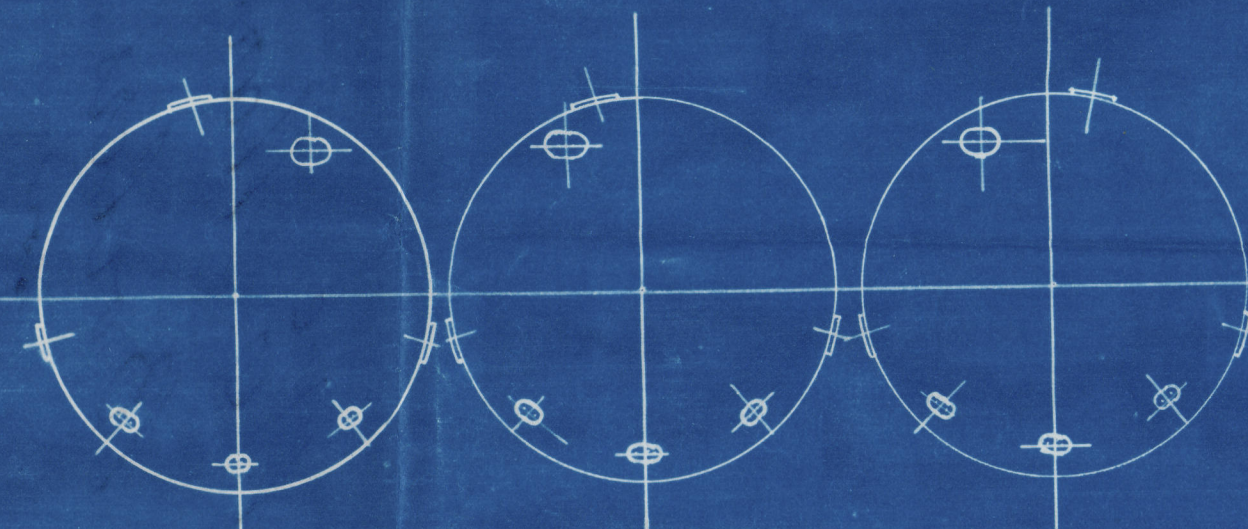
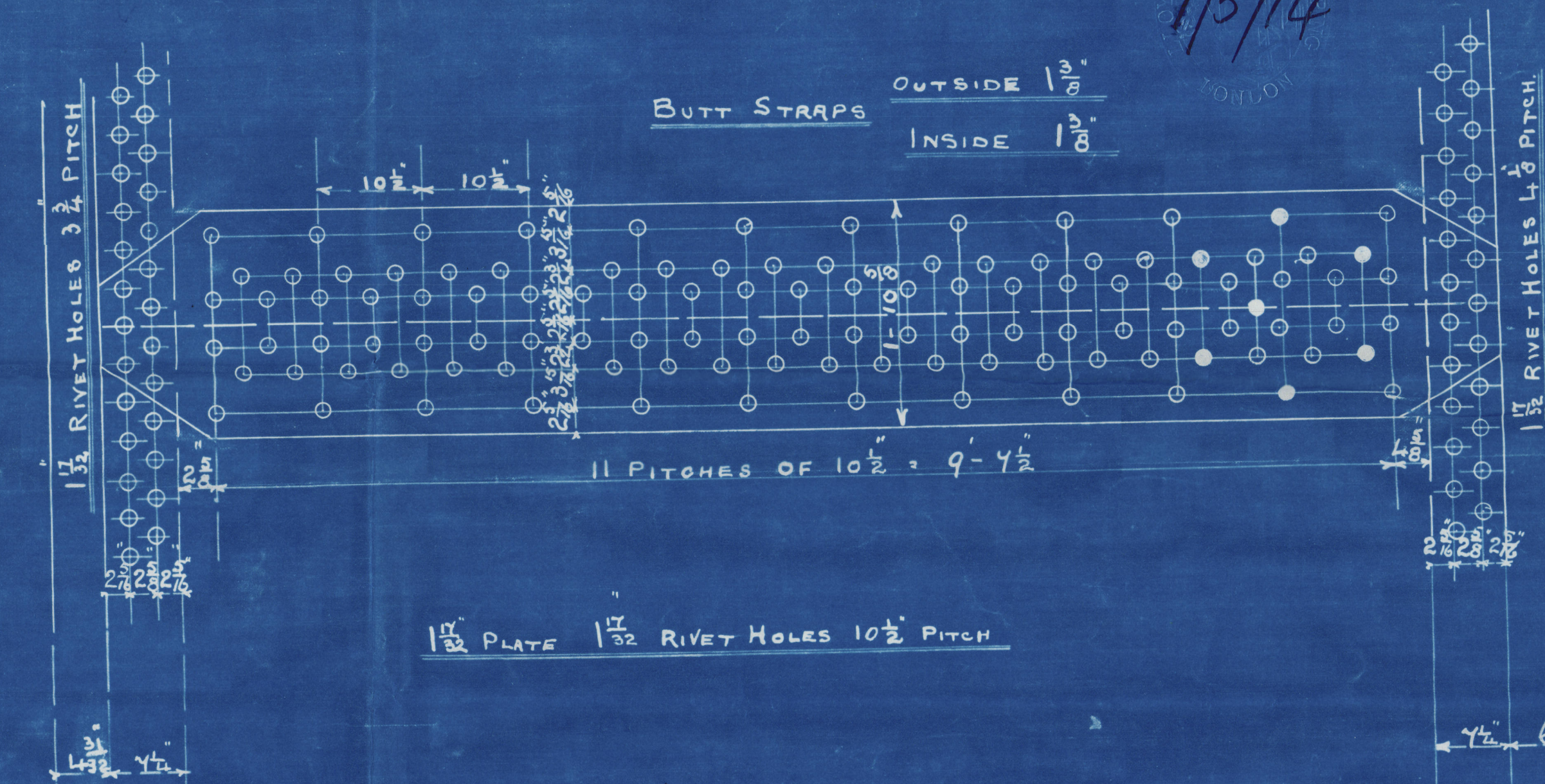
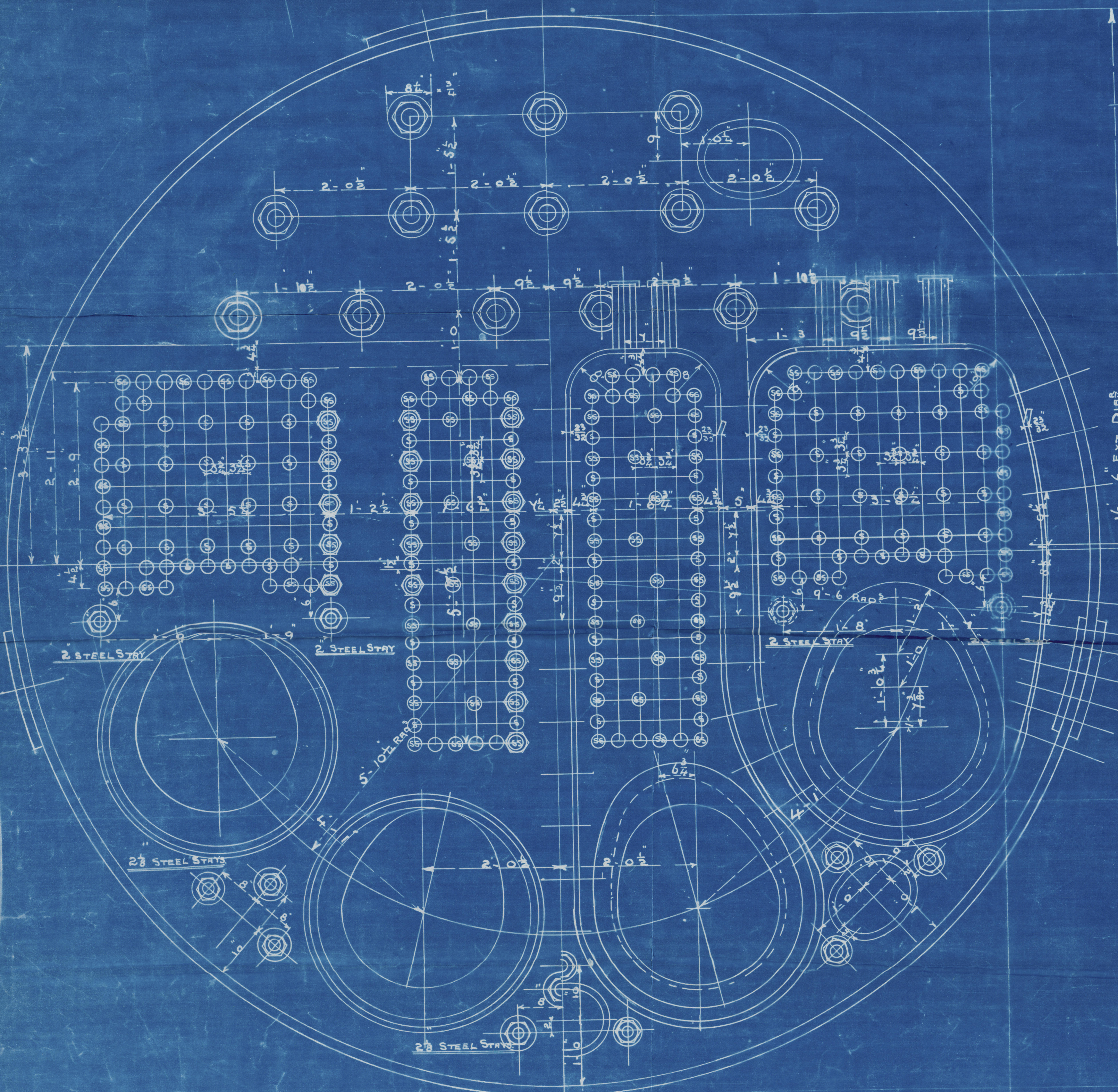


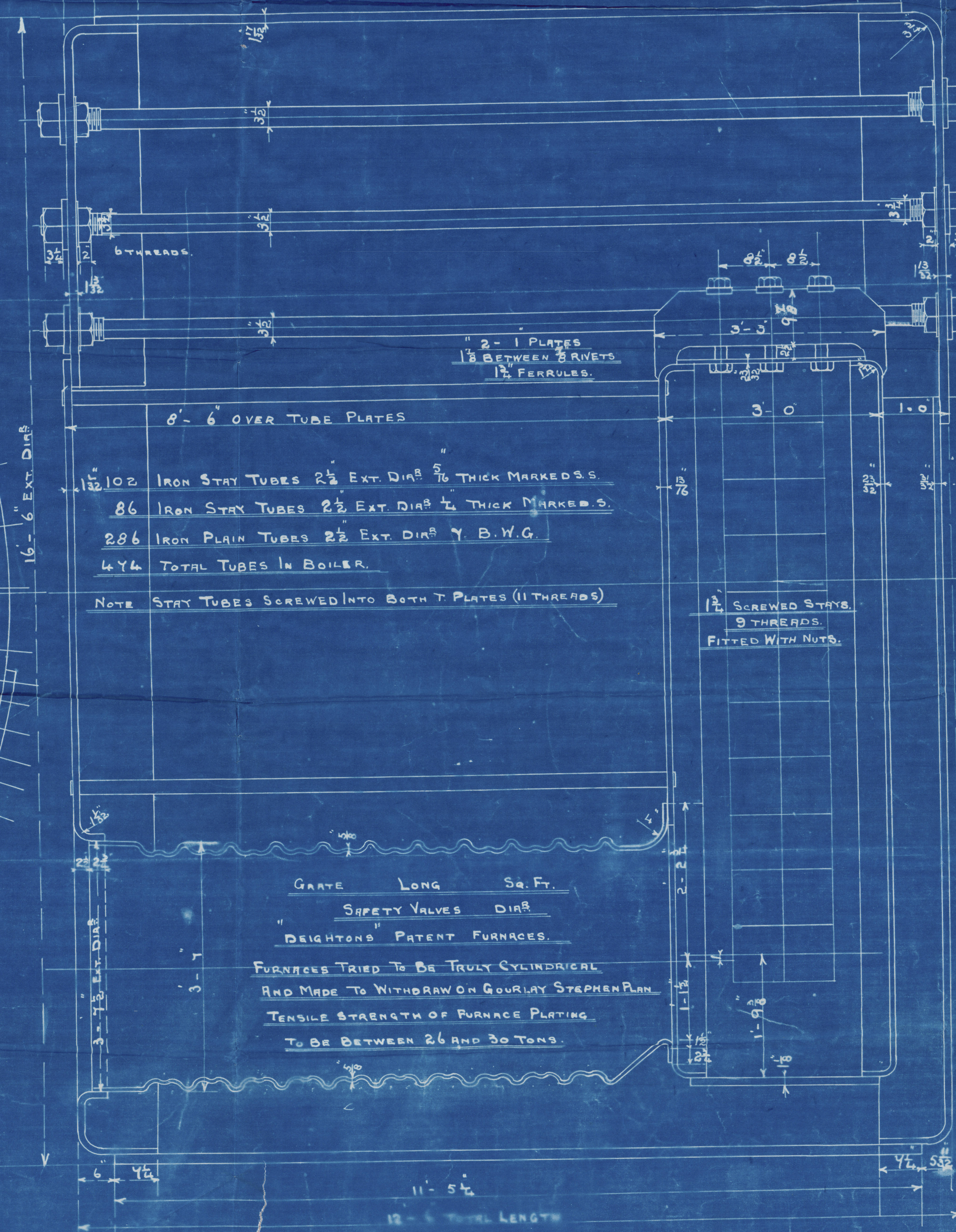
J. H. A.
25/8/13.



VIEW LOOKING ON BACK OF BOILER SHOWING POSITION OF MANHOLES AND BUTT JOINTS.



1 1/2" PLATE 1 1/2" RIVET HOLES 10 1/2" PITCH



- 132 102 IRON STAY TUBES 2 1/2" EXT. DIA. 5/16" THICK MARKED S.S.
- 86 IRON STAY TUBES 2 1/2" EXT. DIA. 1/4" THICK MARKED S.S.
- 286 IRON PLAIN TUBES 2 1/2" EXT. DIA. 7 B.W.G.
- 444 TOTAL TUBES IN BOILER.

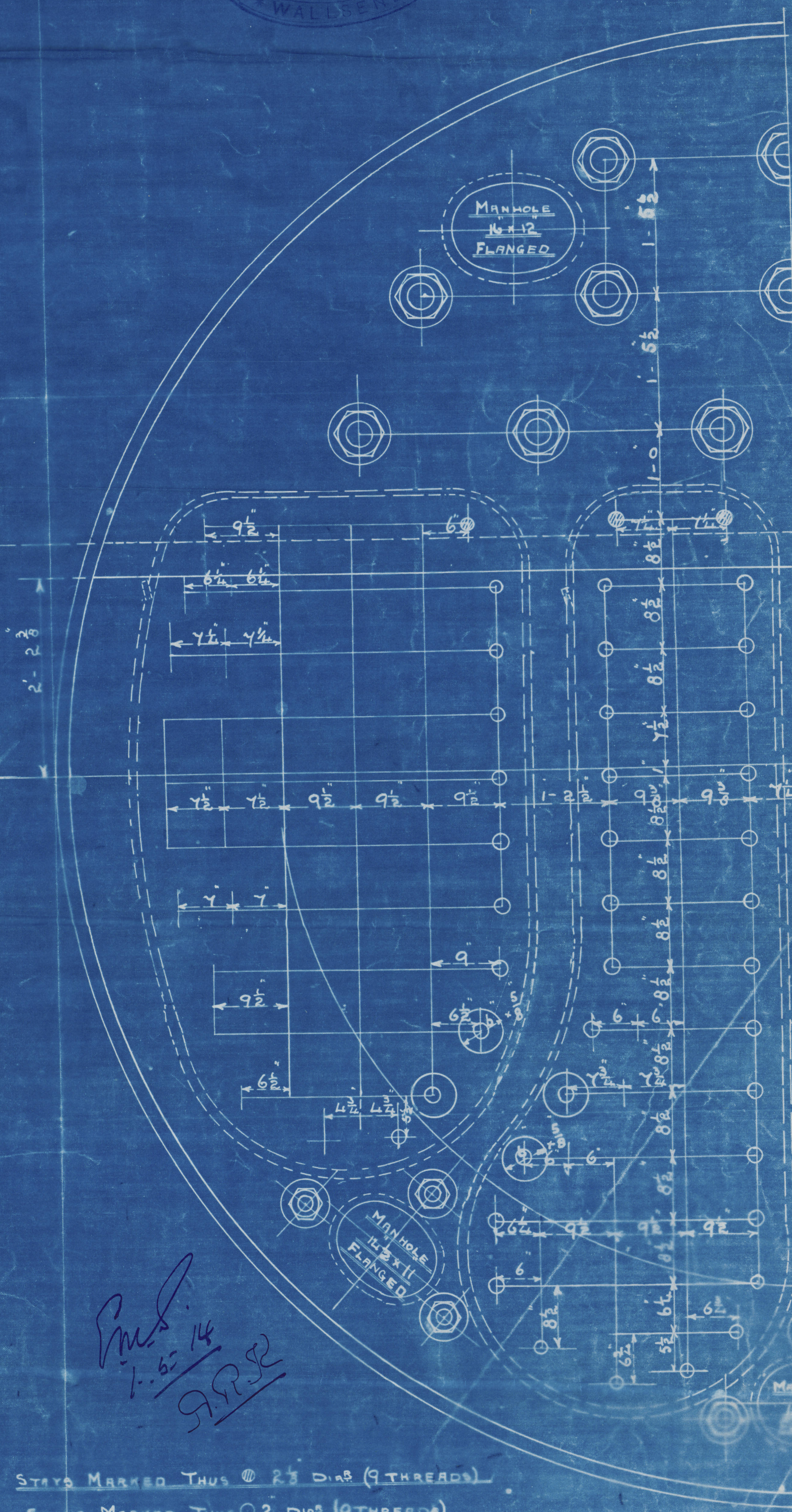
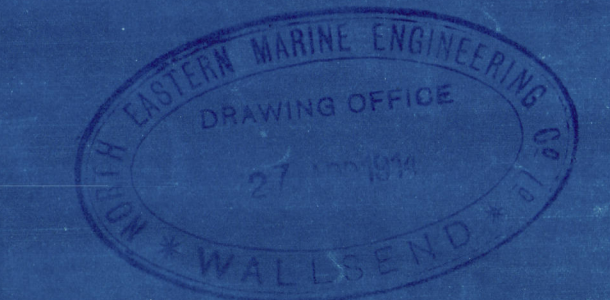
NOTE STAY TUBES SCREWED INTO BOTH T. PLATES (11 THREADS)

GRATE LONG Sq. Ft.
SAFETY VALVES DIA.
"BEIGHTON" PATENT FURNACES.

FURNACES TRIED TO BE TRULY CYLINDRICAL
AND MADE TO WITHDRAW ON GOURLAY STEPHEN PLAN.
TENSILE STRENGTH OF FURNACE PLATING
TO BE BETWEEN 26 AND 30 TONS.

SURVEY TO LLOYDS REQUIREMENTS
HEATING SURFACE ON TUBES = 2656 Sq. Ft.
ELSEWHERE = 636 Sq. Ft.
TOTAL = 3292 Sq. Ft. PER BOILER
STEAM SPACE = CUB. FT.
WORKING PRESSURE 220 LBS.
TEST PRESSURE 440 --

NOTE ALL PLATES STAYS 9/16" TO BE OF STEEL SMOKE TUBES OF IRON
TENSILE STRENGTH OF SHELL PLATING TO BE NOT LESS
THAN 28 1/2 TONS PER SQUARE INCH.
ALL HOLES DRILLED IN PLACE AFTER PLATES ARE BENT.



STAYS MARKED THUS @ 2 1/4" DIA. (9 THREADS)
STAYS MARKED THUS @ 2" DIA. (9 THREADS)
ALL OTHER STAYS 1 1/4" DIA. (9 THREADS)
NOTE ALL SCREW STAYS SCREWED INTO PLATE AND FITTED WITH NUTS

A. E. Marine
Boilers 2174
for
S. J. Laing. No 649
pressure 220lbs
Newcastle 29/4/14
Duplicate S.S. "Springwell" 2143



Stamwell esc

S. S. STOCKWELL
NEWCASTLE-ON-TYNE
REPORT No 66832

Sld 26290.



© 2019

W262-0016
Lloyd's Register
Foundation