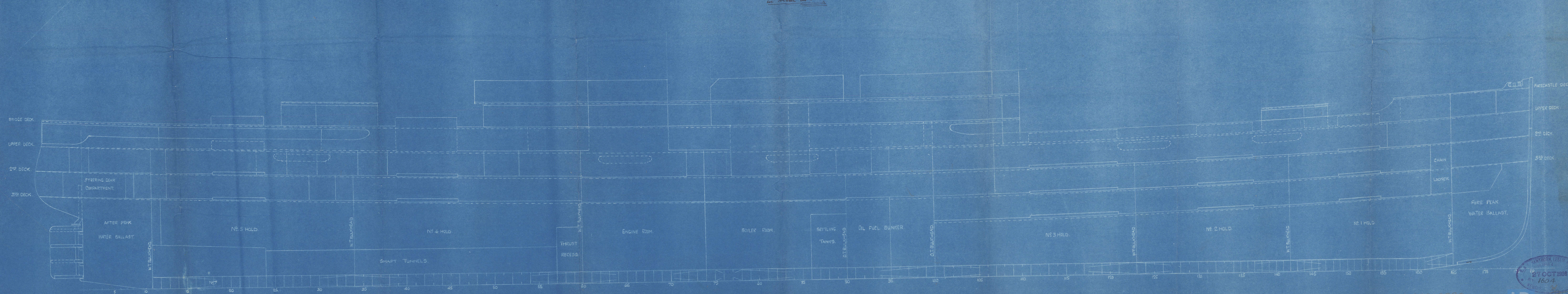


№ 542 SHIP

LONGITUDINAL ELEVATION.

SCALE 1/8 IN = 1 FOOT.

*Showing position of bulwarks hatchways and openings
as now as built*



AWTHORN, LESLIE & CO.
27 OCT 1928
1604
NEWCASTLE

6258-0220

ENCLOSURE TO

MR BROWN L. LOYDS

31/02832.

FROM R. & W. HAWTHORN, LESLIE & CO. LTD.,
HEBBURN-ON-TYNE.

WZ58-0220 2/2

Hawthorn Leslie's

542

T.S. "ROHNA"

Profile showing correct positions of
bulkheads, hatchways, shell openings etc.

"ROHNA"

NEWCASTLE ON TYNE.

Report No. 80689.

W258-0220 1/2



© 2019

Lloyd's Register
Foundation