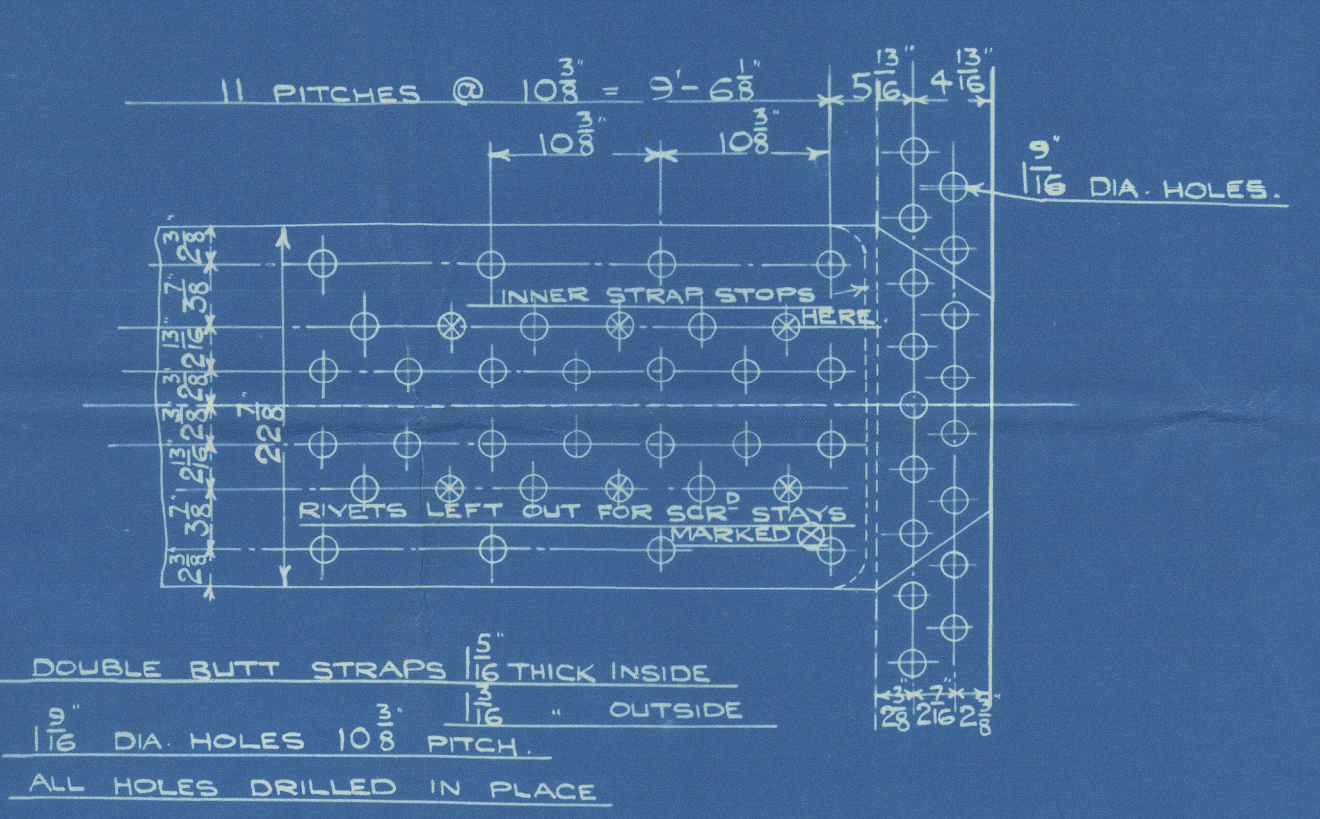
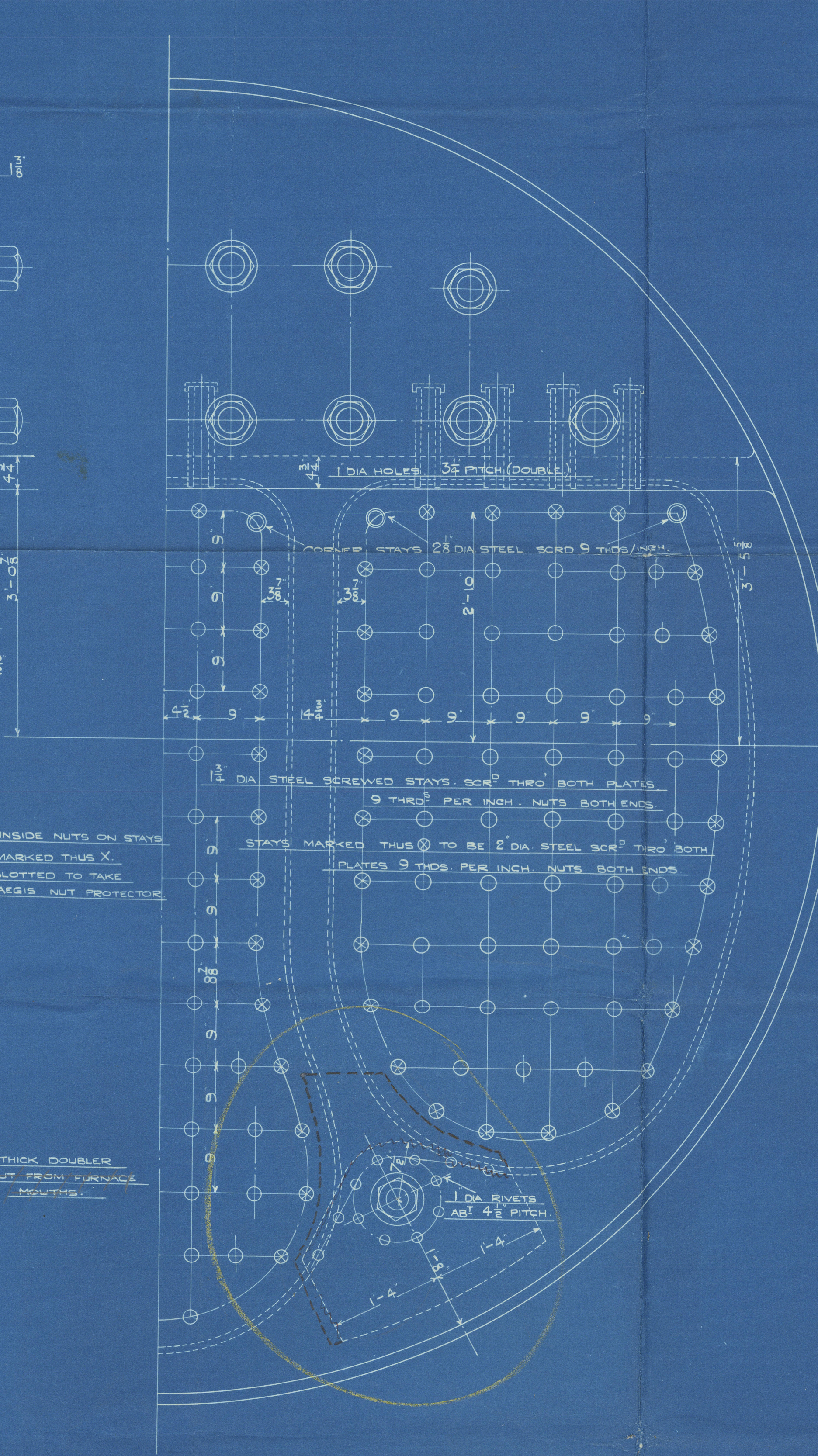
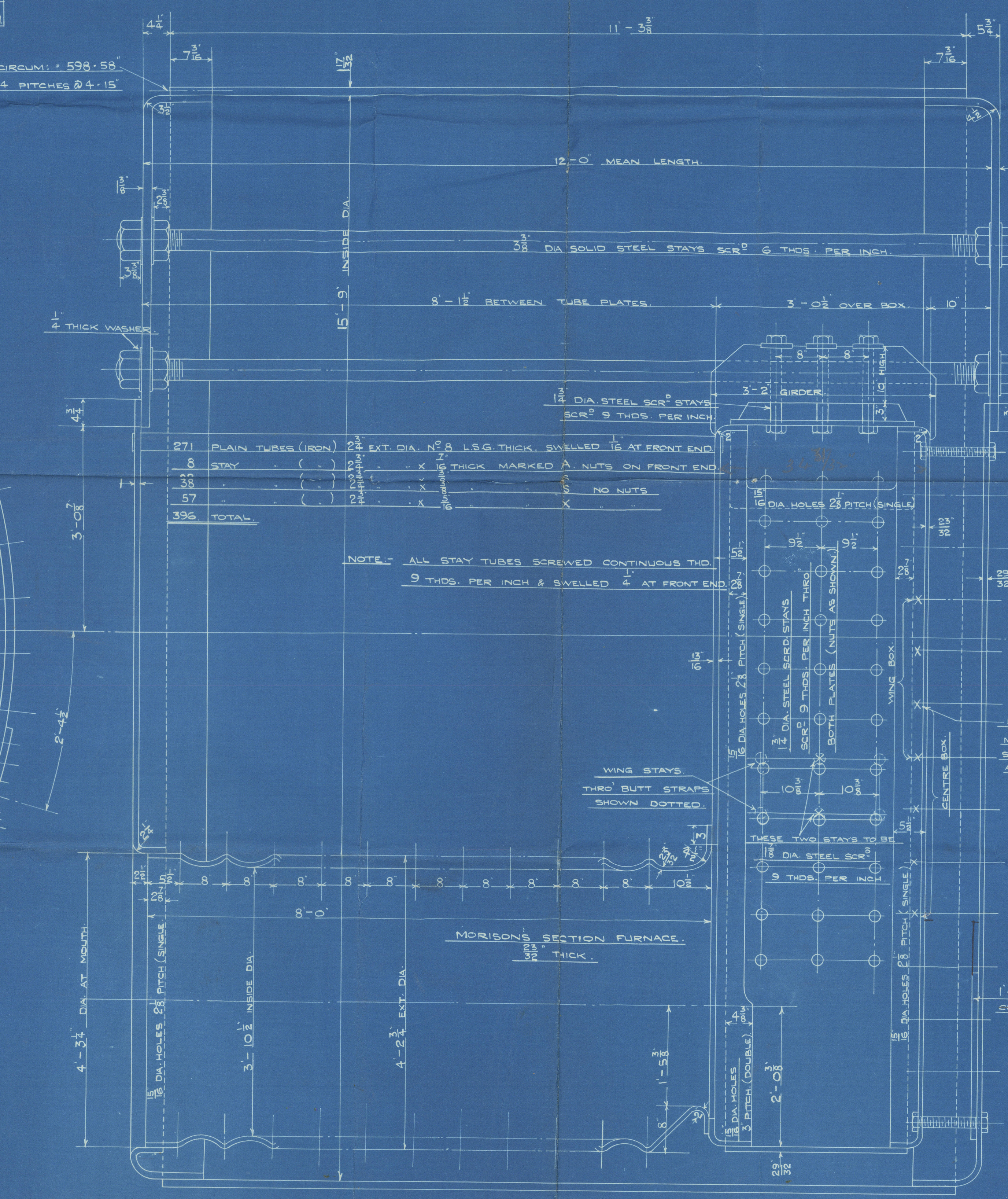


HAWTHORN-GRAY PATENT COMPENSATING PLATE  
8 DOOR  
SEE STD. DRS. NO. 1495.

TESTS OF MATERIAL		
SHELL PLATES	28-32 TONS	
BUTT STRAPS	28-32	
COMPENSATING PLATE	28-32	
BORDERS	28-32	
LONGIT. STAYS	28-32	
SCREWED	26-30	
END PLATES	26-30	
ALL PLATING PLATES	26-30	
FURNACES	26-30	5 BLK'S
HEATING SURFACE TUBES		
FURNACES (OIL FUEL)	325	
SIDES	175	
BACKS	98	
8x TUBE PLATES	50	
FRONT	33	
TOTAL	2397	14985
AREA THRU TUBES	11.6	58



DOUBLE BUTT STRAPS 1/8" THICK INSIDE  
1/8" DIA HOLES 10 1/8" PITCH OUTSIDE  
ALL HOLES DRILLED IN PLACE  
TENSILE STRENGTH OF SHELL & BUTT STRAPS 28-32 TONS  
TO PASS BOARD OF TRADE & LLOYD'S SURVEYS  
WORKING PRESSURE 215 LBS. PER SQ. IN.  
TEST 375



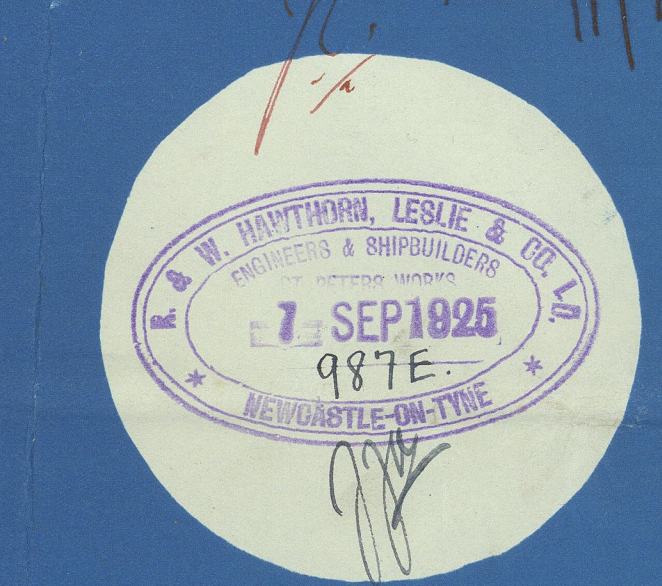
DRAWN BY  
CHECKED BY  
DATE  
10/20/25

DRAWING NO 101.

MAIN BOILERS.

5-OFF.

SCALE - 1" = ONE FOOT



Mr. J. J. 11/9/25

Noted & retained  
13 SEP 1925

ENGINE NO 3643

1238-0217

Hess R & W  
Hawthorn Leslie & Co Ltd  
5 Boilers (3646)  
W.P. 215 lbs per sq. in.

Boiler plates made by Fried Krupp  
erupting wrapper plate by Cornett.

J. J. J. Rohma  
London

NEWCASTLE ON TYNE.  
Report No. 80689.

14 SEP 1925

W258 - 0217



© 2019

Lloyd's Register  
Foundation